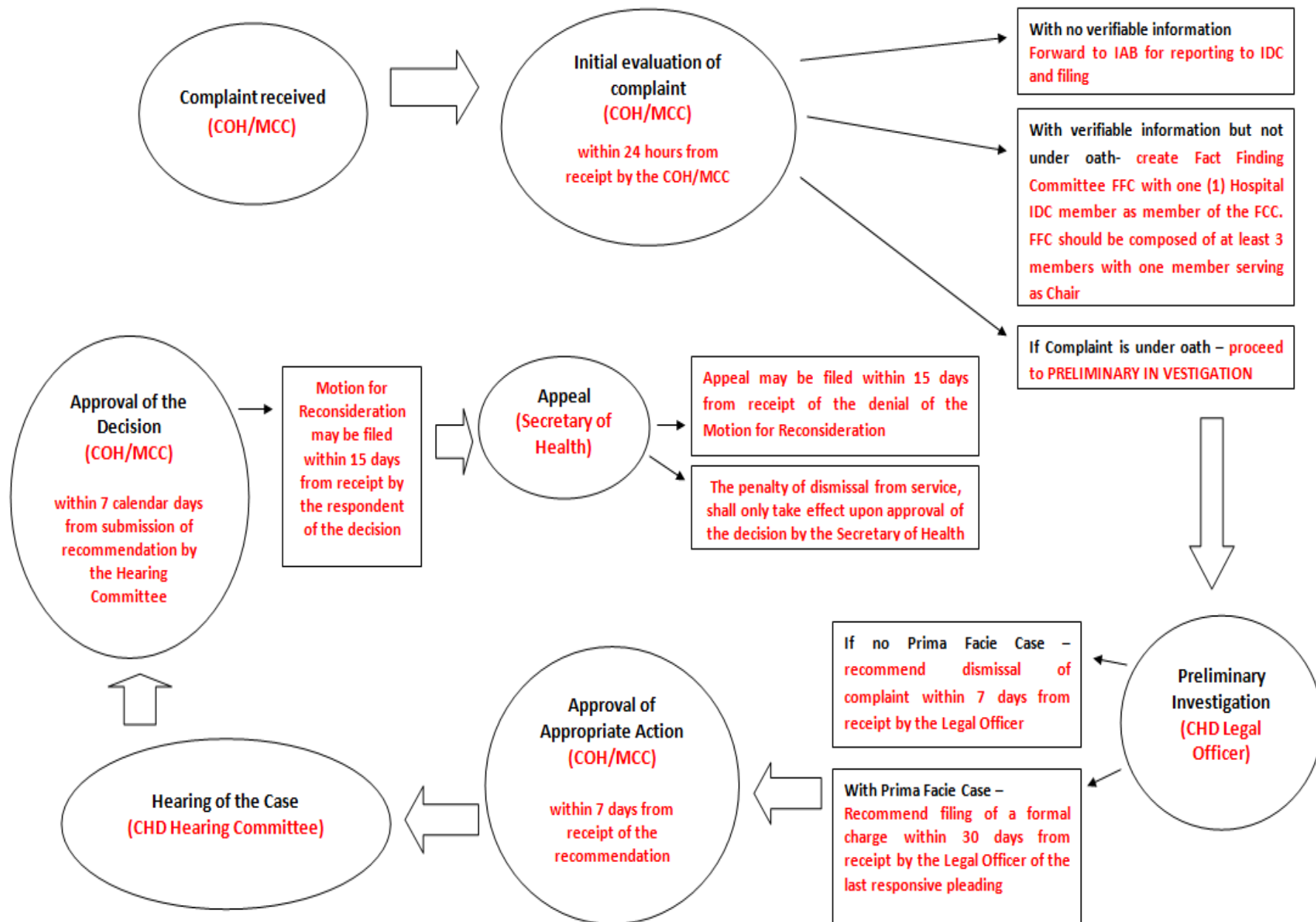
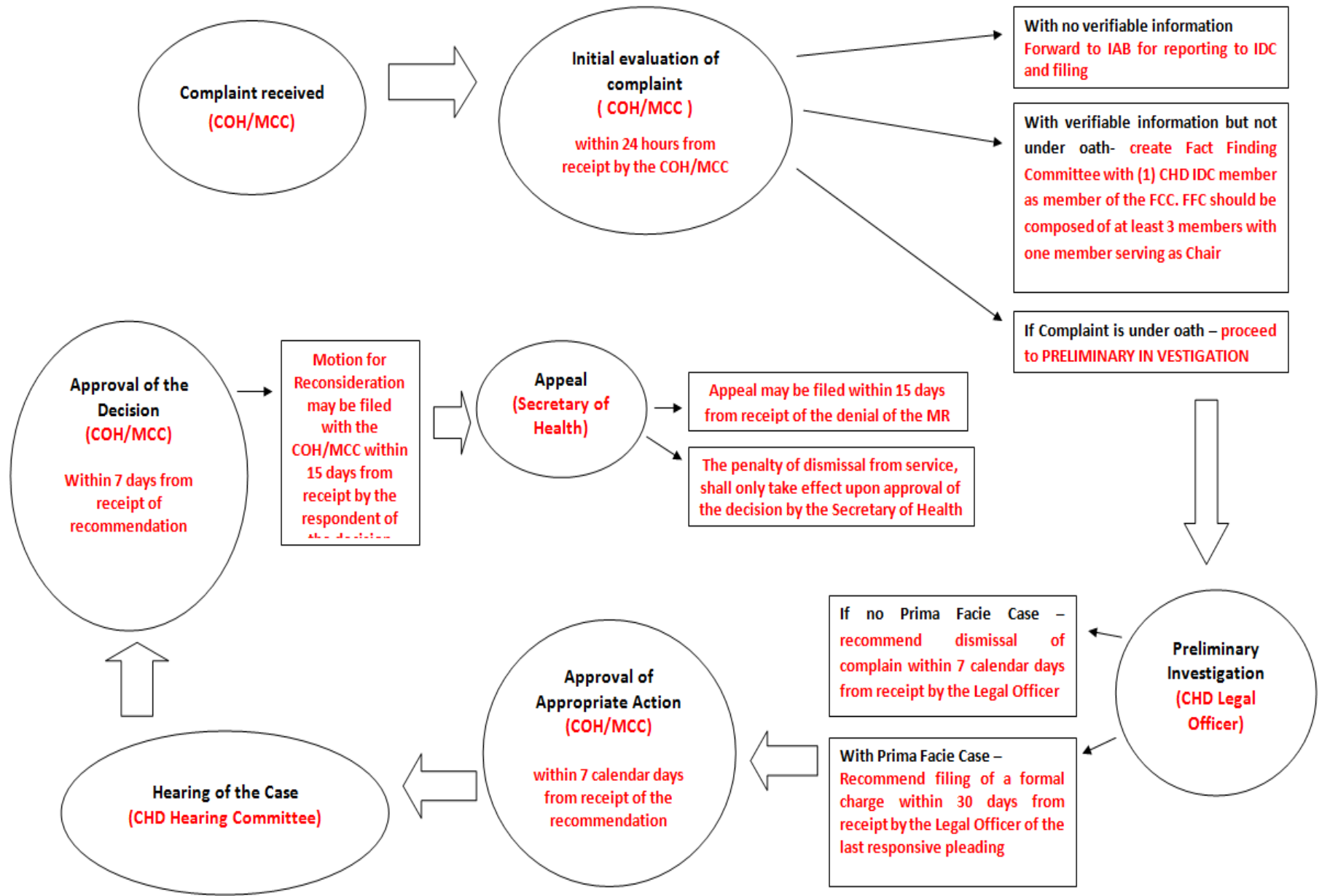


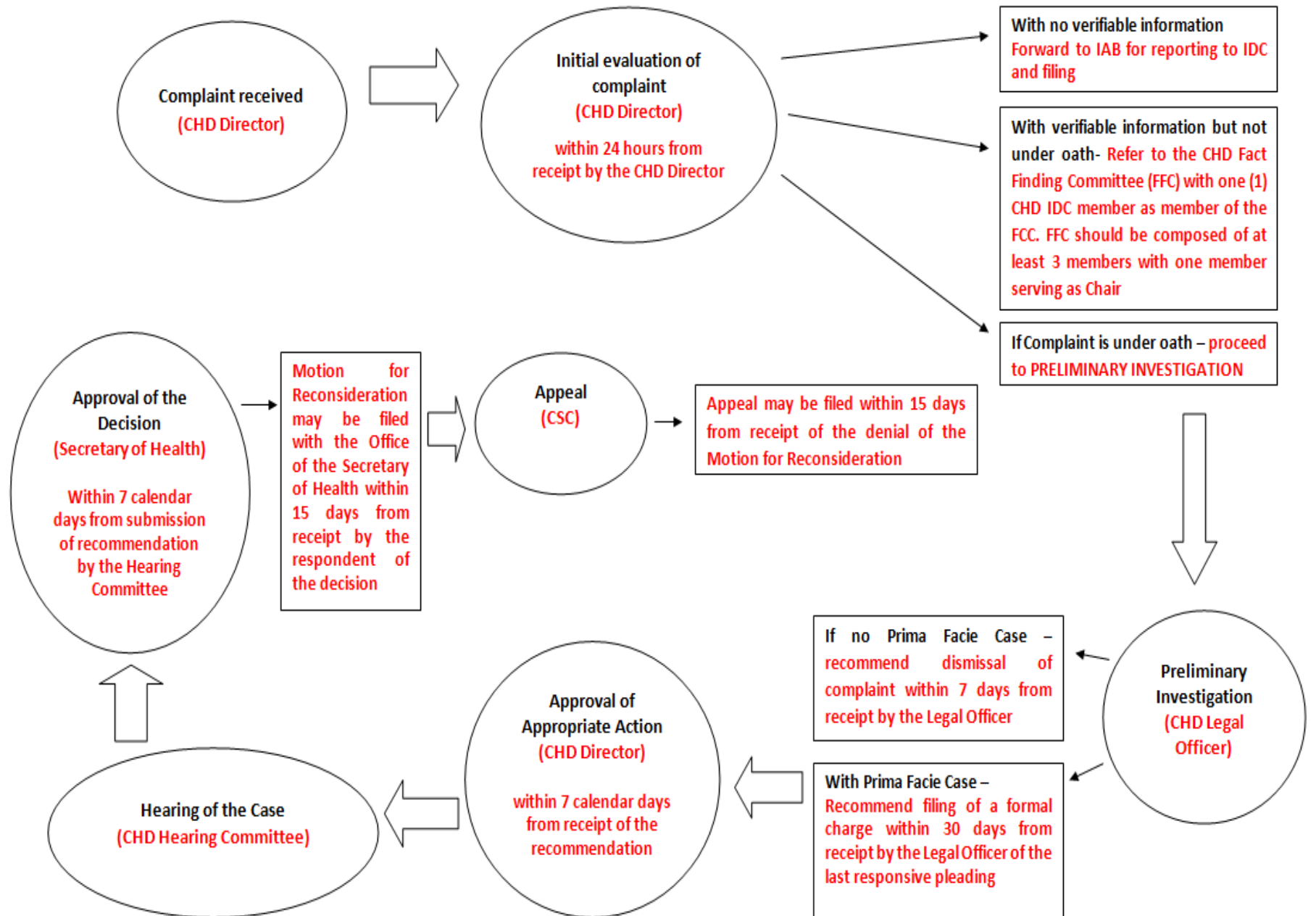
1. For Positions lower than CHIEF OF MEDICAL PROFESSIONAL STAFF/CHIEF OF CLINICS, CHIEF ADMINISTRATIVE OFFICERS AND CHIEF NURSE under CHD



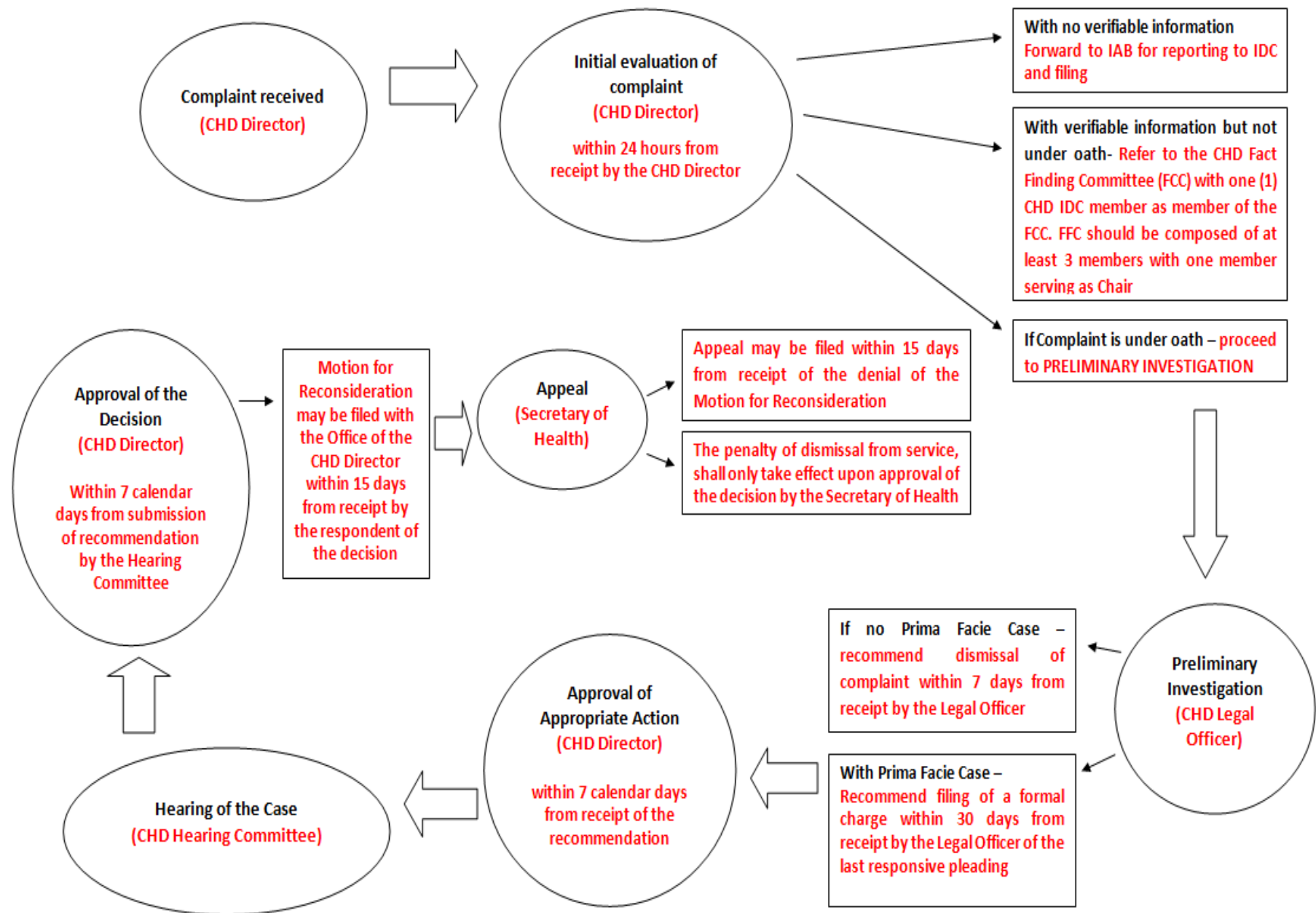
2. For CHIEF OF MEDICAL PROFESSIONAL STAFF/CHIEF OF CLINICS, CHIEF ADMINISTRATIVE OFFICERS AND CHIEF NURSE under CHD



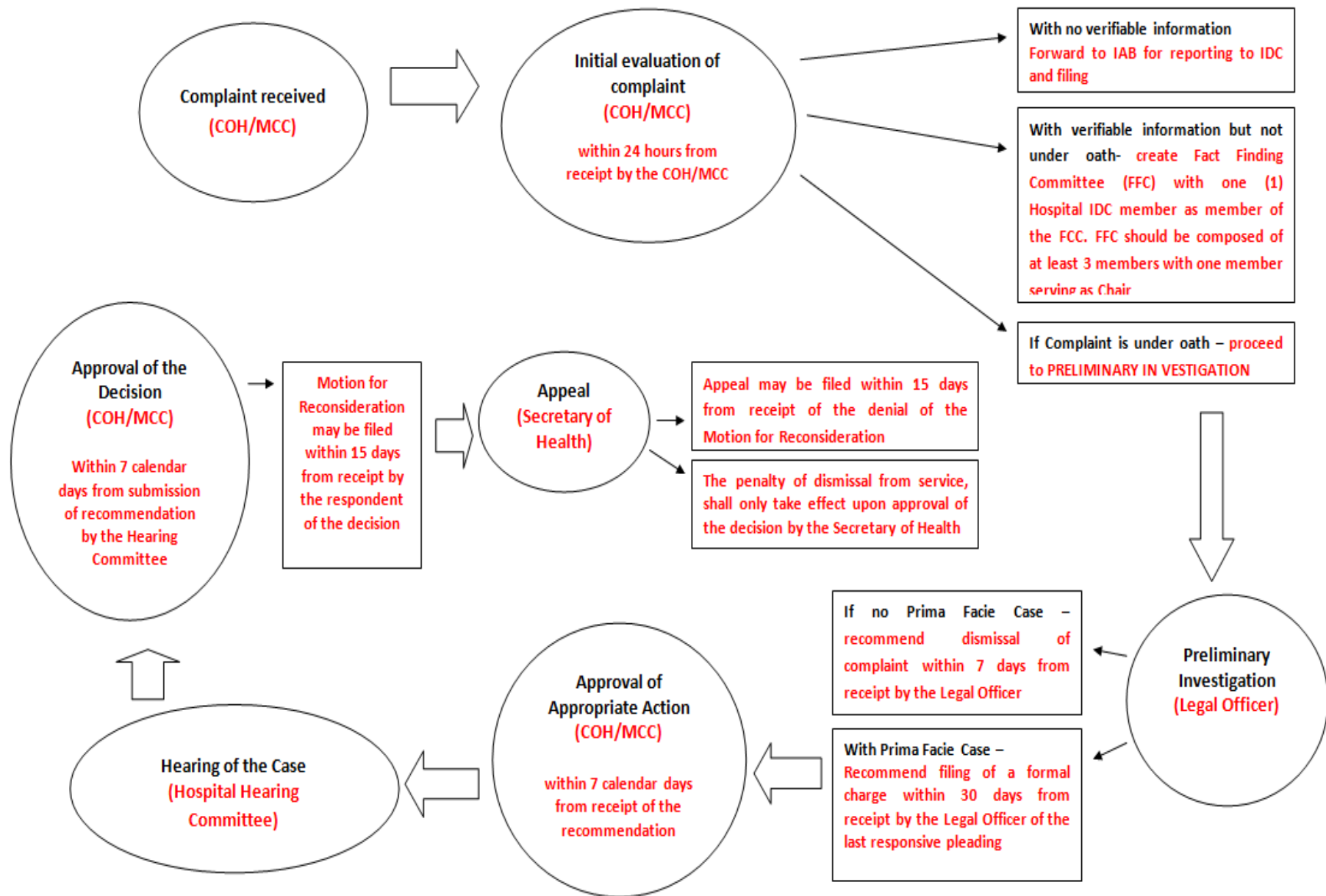
3. For CHIEF OF MEDICAL CENTERS/HOSPITALS/SANITARIA/REHAB CENTERS under CHD



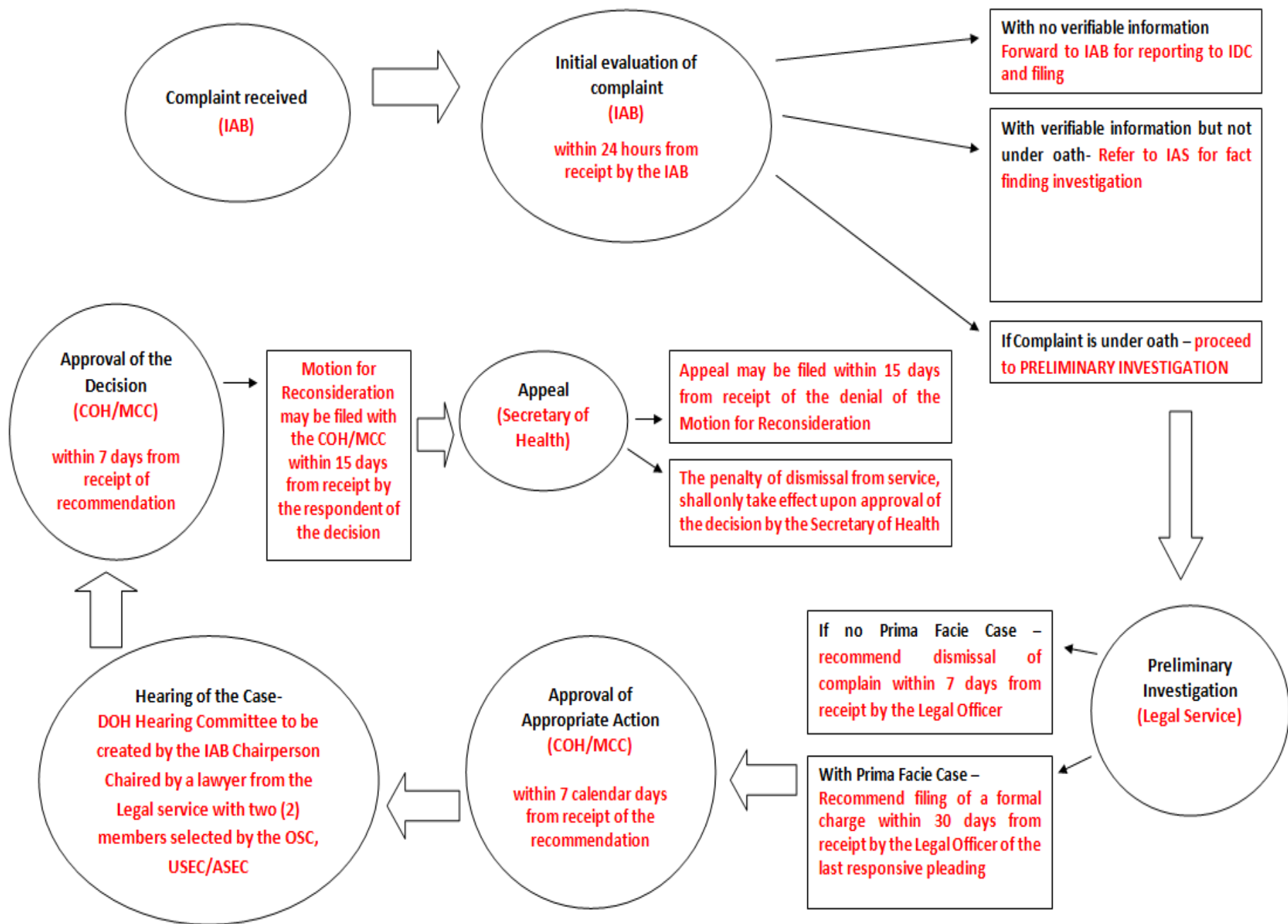
4. For OFFICERS AND EMPLOYEES OF CENTERS FOR HEALTH DEVELOPMENT LOWER THAN CHD ASSISTANT DIRECTOR



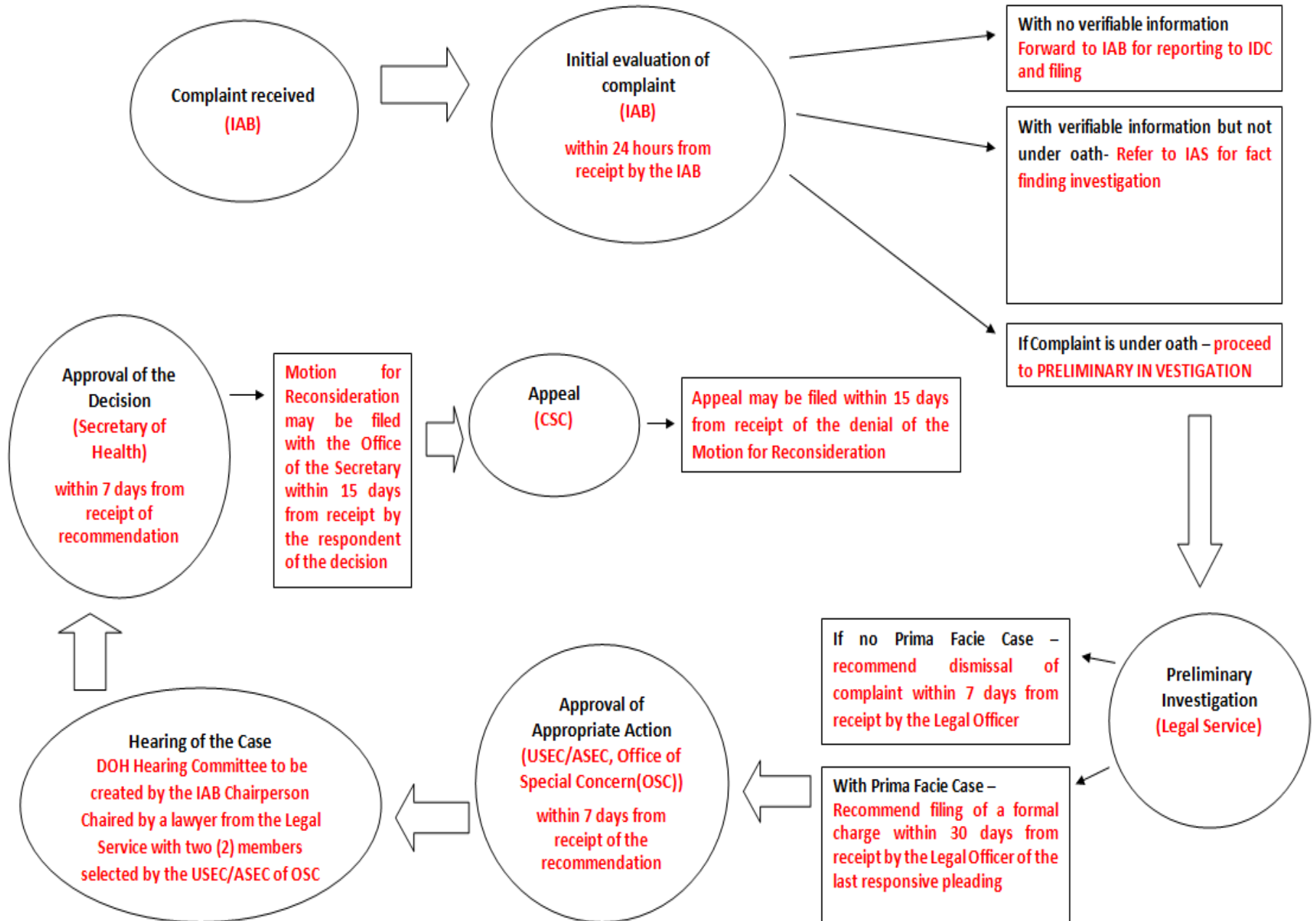
5. For Positions lower than CHIEF OF MEDICAL PROFESSIONAL STAFF/CHIEF OF CLINICS, CHIEF ADMINISTRATIVE OFFICERS AND CHIEF NURSE under DOH-CO



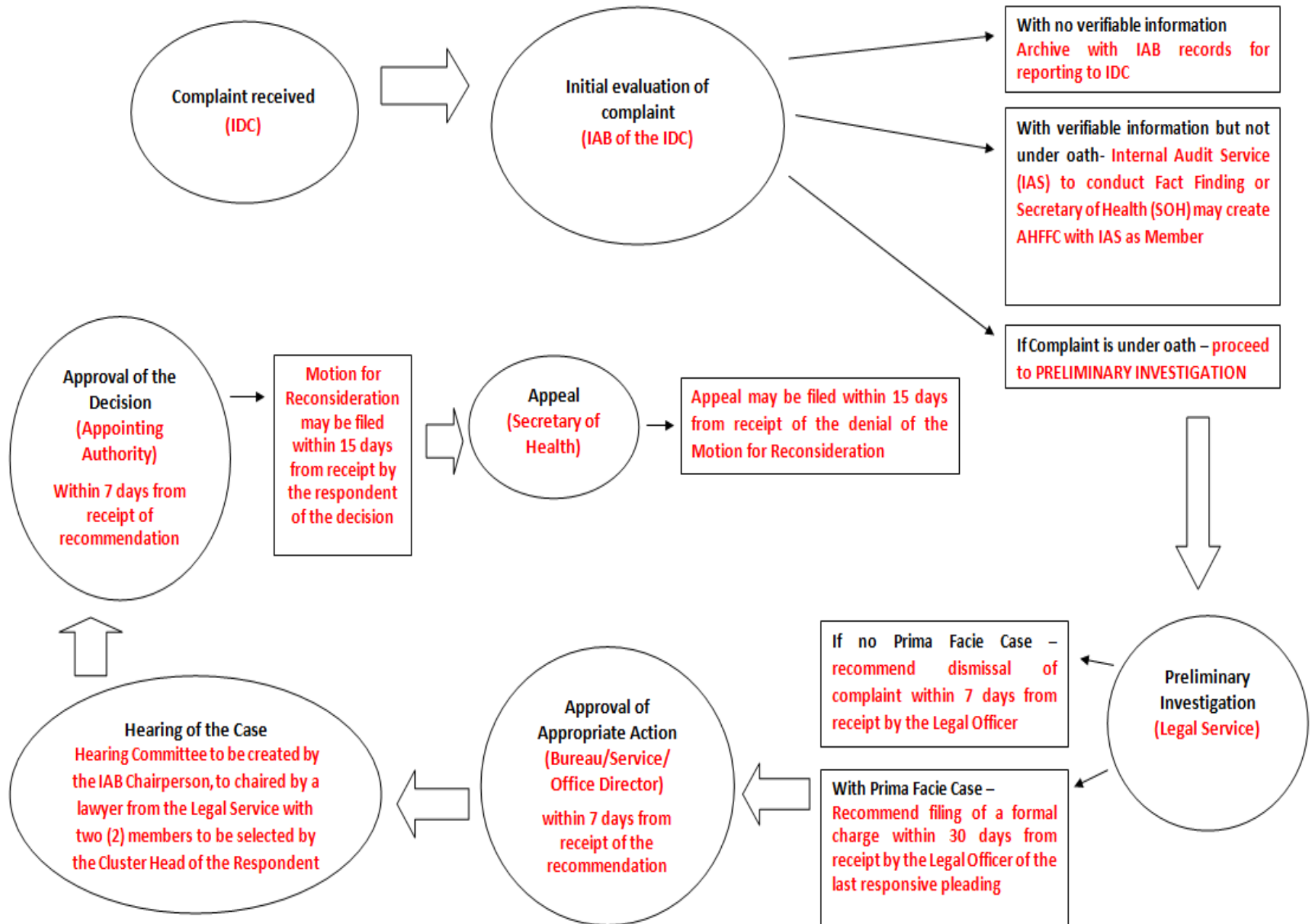
6. For CHIEF OF MEDICAL PROFESSIONAL STAFF/CHIEF OF CLINICS, CHIEF ADMINISTRATIVE OFFICERS AND CHIEF NURSE under DOH-CO



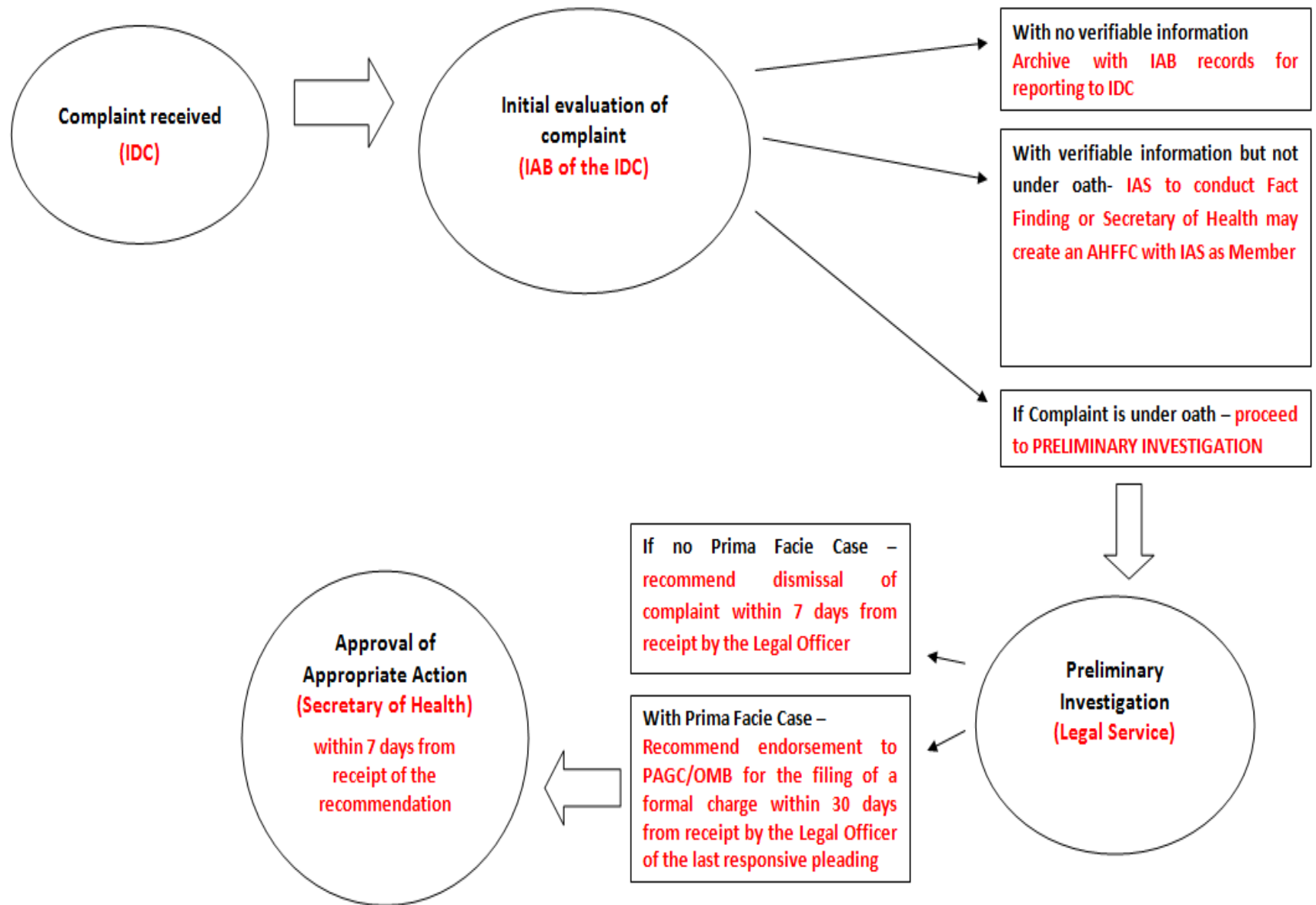
7. For CHIEF OF MEDICAL CENTERS/HOSPITALS/SANITARIA/REHAB CENTERS and SPECIAL HOSPITALS under DOH-CO



8. For DOH CENTRAL OFFICE UNITS including BOQ and BFAD DIVISION CHIEFS and BELOW



9. For ALL PRESIDENTIAL APPOINTEES in the DOH CENTRAL OFFICE/CHDs, except Undersecretary (USEC) and Assistant Secretary (ASEC)



10. For ASSISTANT SECRETARY (ASEC) AND UNDERSECRETARY (USEC)

