

Beat COVID-19 Today

A COVID-19 Philippine Situationer



Issue 71 | July 07, 2020

Total Cases as of 6 July 2020

46,333

+2,099 (1,258 Fresh, 841 Late)

Active Cases (net of recoveries and deaths)

32,845

+1,850

Recovered

12,185

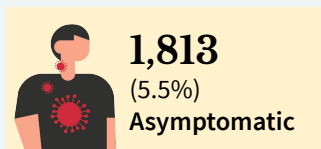
+243

Died

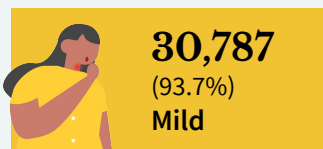
1,303

+6

Breakdown of Active Cases



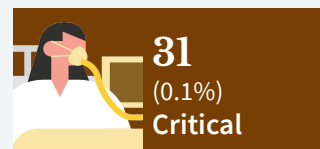
A patient with an RT-PCR confirmed case of COVID-19 without symptoms.



A patient with mild symptoms and stable vital signs. Unless the patient belongs to high-risk subgroups or has comorbidities, they are often not admitted to a treatment facility.



A patient with difficulty breathing, altered mental status, considered high-risk or in need of hospital care.



A patient with impending or ongoing respiratory failure, in need of mechanical ventilation, or with evidence of end-organ damage.

Note. A person who is classified as having a mild case of COVID-19 but is considered high-risk due to age or the presence of comorbidities must be admitted to a treatment facility. Severe or critical cases must be admitted to a treatment facility, regardless of inclusion in high-risk subgroups or presence of comorbidities.

679

Probable Cases as of 06 July 2020

Previously termed as PUIs (mild or critical) with inconclusive or unofficial test results.

1,874

Suspect Cases as of 06 July 2020

Previously termed as PUIs (mild or critical) with no test done or awaiting test results.

Breakdown of cases per region

Top confirmed regions by active cases

NCR	13,027
Region VII: Central Visayas	7,558
Region IV-A CALABARZON	1,571
Region III: Central Luzon	506
Region VIII - Eastern Visayas	432

Top regions by newly-announced fresh cases

NCR	601
Region VII - Central Visayas	280
Region IV-A - CALABARZON	81
Region III - Central Luzon	28
Region XI - Davao Region	16

Top confirmed provinces/ cities by active cases*

Cebu City	4,360
Quezon City	1,867
City of Manila	1,663
Cebu Province	1,493
Caloocan City	780

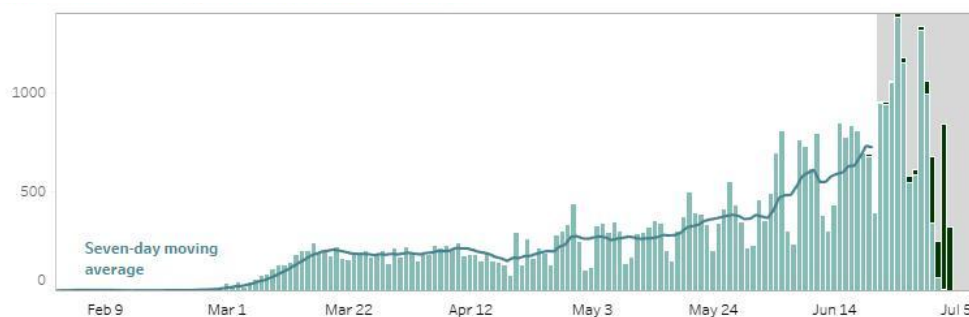
***Note:** Case counts do NOT represent the final number and are subject to change after validation.

Top provinces/cities by newly-announced fresh cases

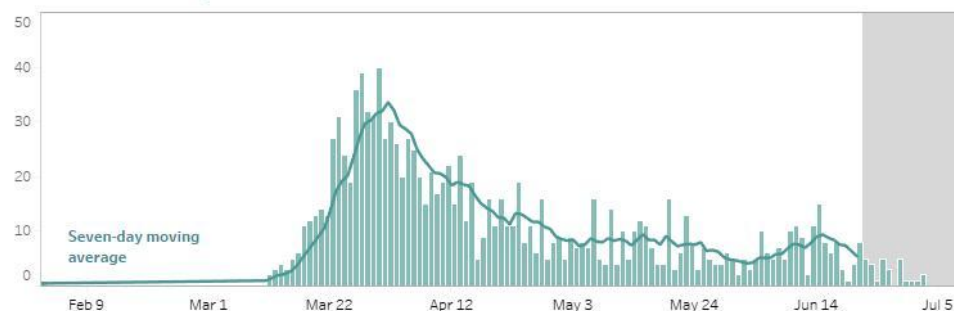
Cebu City	129
Lapu-Lapu City (Opon)	101
City of Manila	70
Quezon City	65
City of Valenzuela	58

Note. Data on healthcare workers affected by COVID-19, testing capacity by laboratory, equipment utilization, and LIGTAS COVID facilities will be included in the full situational report every Sunday.

CONFIRMED CASES BY DATE OF ONSET OF ILLNESS (NATIONWIDE)



CONFIRMED DEATHS BY DATE OF DEATH (NATIONWIDE)



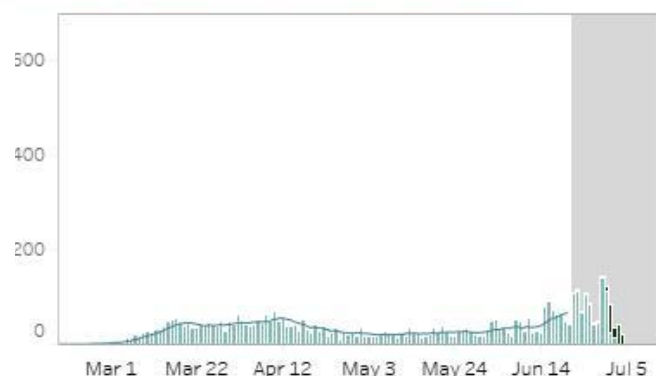
Notes.

1. Bars with dark green colors indicate the actual date of onset or date of death for newly-reported cases.
2. In cases where date of onset of illness is unreported, date of specimen collection was used as proxy. Cases that do not have both are not accounted for in the date of onset histogram. As of this situation report, around 10% of cases have unreported dates of specimen collection and onset of illness.
3. Owing to delays in reporting, case counts within the gray area are still incomplete. Hence, we urge caution in interpreting data beyond this 14-day cutoff. Rest assured that the DOH continues to work tirelessly to ensure the timely reporting of accurate data.

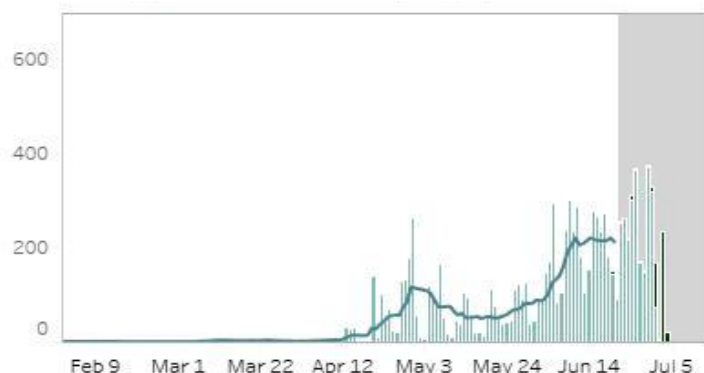
CONFIRMED CASES BY DATE OF ONSET OF ILLNESS (DISAGGREGATED)



NCR



Luzon



Visayas



Mindanao

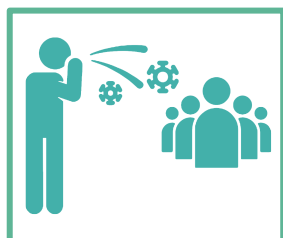
Notes.

1. Bars with dark green colors indicate the actual date of onset or date of death for newly-reported cases.
2. The cases from the "NCR" graph have been separated from cases of the "Luzon" graph.
3. Owing to delays in reporting, case counts within the gray area are still incomplete. Hence, we urge caution in interpreting data beyond this 14-day cutoff. Rest assured that the DOH continues to work tirelessly to ensure the timely reporting of accurate data.

COVID-19'S CAPACITY TO SPREAD (R_t VALUE)

June 18: 1.22 ± 0.03

Nationwide R_t



The time-varying **reproduction number (R_t)** indicates the possible number of people being infected by a sick person, at a specific time with control measures in place.

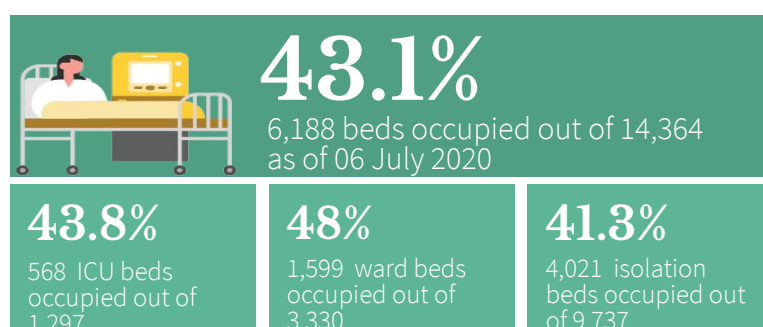
IMPORTANT NOTE. The reproduction number is measured using symptom onset, we do not include in the interpretation the past 14-16 days given the time between symptoms, health seeking, testing, and reporting. When interpreting the reproduction number keep in mind that it is a **lagging indicator**. Please do not expect this number to change daily.

- The reproduction number (R_t) was around 2 early on in the outbreak. This meant that each confirmed person with COVID was infecting 2 other people.
- Based on the latest data, we are 95 percent confident that $R_t = 1.22 \pm 0.03$, which means each infected individual was infecting an average of 1.05 other persons **around two weeks ago**.
- Lowering this value is made possible through efforts such as social distancing, wearing of PPE, and other means to stop the spread of the virus.**
- The goal is for R_t to be less than 1 and sustain it, which would mean that, on average, an infected person is infecting less than one person, eventually stopping the transmission of COVID-19.

TOP SEA COUNTRIES BY CONFIRMED CASES

	Indonesia	64,958
	Philippines	46,333
	Singapore	44,983
	Malaysia	8,668
	Thailand	3,195
	Vietnam	369
	Brunei	141
	Cambodia	141
	Laos	19

UTILIZATION OF COVID-19 BEDS



Note. The number of confirmed severe and critical cases may not necessarily correspond to occupancy of ICU beds and mechanical ventilators as suspect and probable cases in severe or critical condition also utilize these resources. Facilities which did not submit a daily utilization report have their most recent carry over to today.

DAILY TESTING STATISTICS AS OF 06 JULY 2020 (MONDAY)

Daily Testing Output (Nationwide)



Daily Positivity Rate



Report Date

Daily Testing Statistics as of 06 July 2020 (Monday)

Samples Tested	14,797
Individuals Tested	13,905
Positive Tests	1,548
Positivity Rate	11.13%
Testing Backlogs	14,290
Compliance of Labs	64/72

Cumulative Testing Output

Samples tested	860,327
Individuals Tested	797,585
Positive Tests	59,528
Positivity Rate	7.46%

Notes.

- The DOH is continuously validating the number of positive individuals as reported by the laboratories. When necessary, they are deduplicated. As such, the discrepancy with the number of confirmed cases does not necessarily reflect backlogs in case validation.
- Please visit www.doh.gov.ph/covidtracker for details regarding the testing output per laboratory.
- A 6 PM cut-off for the situation report is used, and so the numbers presented here are not yet final. A few laboratories submit data between 6 PM and the time the public data drop is generated.

STATUS OF LABORATORY LICENSING

As of July 6, 2020

77	174	150	86%
NO. OF LICENSED RT-PCR LABORATORIES RT-PCR (57) GENEXPERT(20)	TOTAL NO. OF LABORATORY APPLICATIONS*	TOTAL NO. OF LABORATORIES STAGE 3 AND ABOVE*	% LABS ON STAGE 3 AND ABOVE*

*Facilities using GeneXpert machines included.

HIGHLIGHTS AND RECENT UPDATES ON COVID-19

As of July 6, 2020

- DOH recorded **32,845 active cases** with the majority of the patients exhibiting **mild symptoms** (30,787; 93.7%) while **31 patients** are in **critical condition** (0.1%).
- A total of 114,394 Returning Overseas Filipino arrived (Land-based:48,844; Sea-based:65,550). Of these, 107,862 were released from facility quarantine (Land-based: 44,360; Sea-based: 63,502). Among the Returning Overseas Filipino, 2,720 were confirmed COVID-19 (Land-based:1,449;Sea-based: 1,271). Among the confirmed COVID-19 ROF, 661 are currently admitted (Land-based: 395; Sea-based: 266); 1860 recovered; and 1 died.
- The DOH sub-allotted and transferred a total of Php 896M to health facilities (COVID referral hospitals, DOH Designated Diagnostic Facility, and DOH Hospital). In addition to this, the Department is processing sub-allotment or transfer of Php 441 M to other health facilities with approved health personnel slots for hiring (pending the approval of their Memorandum of Agreement or Sub-Allotment Guidelines). Out of Php 1.7B released funds for HRH hiring, the remaining funds for allocation is Php 408 M.



Contact Details

For further information, you may reach us through the following platforms:

SOCIAL MEDIA ACCOUNTS

- f Facebook:**
fb.com/OfficialDOHgov
- Twitter:**
[@DOHgovph](https://twitter.com/DOHgovph)
- Viber:**
DOH PH COVID-19
- TikTok:**
[@dohgovph](https://tiktok.com/@dohgovph)

WEBSITES

- DOH:**
www.doh.gov.ph
- Healthy Pilipinas:**
healthypilipinas.ph

CONTACT NUMBERS

- (02) 894 - COVID (26843) or 1555 (for all subscribers)

WAIS PINOY CARE CHECKLIST

Do you have a sick person at home?
Make sure you follow these care tips!

If you are sick

- Check your temperature with a thermometer every 4 hours
- Take paracetamol to lower your fever (if temperature is $\geq 37.8^{\circ}\text{C}$)
- Always wear a medical mask to cover your mouth and nose
- Stay in a separate room (if possible) and keep 1 meter (2 arms length) distance from other people
- Wash your hands before and after eating and disposing your mask
- Use separate utensils

If you are a caregiver (you should be healthy and with no underlying condition)

- Wash your hands after every contact with the sick person
- Always wear a mask to cover your mouth and nose when taking care of the sick person
- Wear gloves when you touch the sick person's body fluids. Dispose after
- Clean and disinfect frequently touched surfaces/items every day
- Call your Barangay Health Emergency Response Team (BHRT) if patient develops these symptoms: difficulty breathing, constant pain in the chest, paleness, and changes in mental state

Always practice proper hand hygiene!

Remember to dispose of gloves after they are used!

24/7 COVID-19 HOTLINE: 02-894 COVID (26843) or 1555 for all networks
covid19.healthypilipinas.ph

DOH PH COVID-19 | OfficialDOHgov | DOHgovph | DOHgovph

USAID | Breakthrough ACTION



THANK YOU for checking out this issue of Beat-COVID-19 Today! We'd like to know what you think. Send us your feedback at dohfeedback@gmail.com.