

# Beat COVID-19 Today

## A COVID-19 Philippine Situationer



Issue 61 | June 27, 2020

Total Cases as of 26 June 2020

# 34,073

+1,006 (788 Fresh, 218 Late)

Active Cases (net of recoveries and deaths)

# 23,667

+720

Recovered

# 9,182

+274

Died

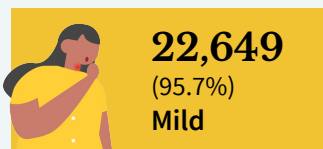
# 1,224

+12

### Breakdown of Active Cases



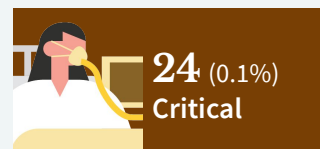
A patient with an RT-PCR confirmed case of COVID-19 without symptoms.



A patient with mild symptoms and stable vital signs. Unless the patient belongs to high-risk subgroups or has comorbidities, they are often not admitted to a treatment facility.



A patient with difficulty breathing, altered mental status, considered high-risk or in need of hospital care.



A patient with impending or ongoing respiratory failure, in need of mechanical ventilation, or with evidence of end-organ damage.

**Note.** A person who is classified as having a mild case of COVID-19 but is considered high-risk due to age or the presence of comorbidities must be admitted to a treatment facility. Severe or critical cases must be admitted to a treatment facility, regardless of inclusion in high-risk subgroups or presence of comorbidities.

# 1,128

**Probable Cases as of 26 June 2020**

Previously termed as PUIs (mild or critical) with inconclusive or unofficial test results.

# 3,583

**Suspect Cases as of 26 June 2020**

Previously termed as PUIs (mild or critical) with no test done or awaiting test results.

### Breakdown of cases per region

#### Top confirmed regions by active cases

NCR	10,104
Region VII: Central Visayas	6,132
Region IV-A CALABARZON	1,171
Region III: Central Luzon	436
Region VIII - Eastern Visayas	280

#### Top regions by newly-announced fresh cases

NCR	285
Region VII - Central Visayas	252
Region IV-A - CALABARZON	72
Region VI: Western Visayas	36
Region III - Central Luzon	16

#### Top confirmed provinces/ cities by active cases

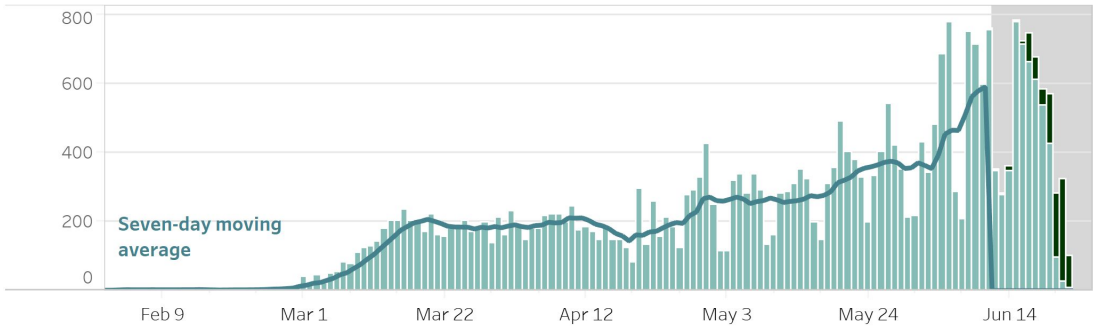
Cebu City	3,913
Quezon City	1,460
City of Manila	1,280
Cebu Province	908
Mandaue City	539

#### Top provinces/cities by newly-announced fresh cases

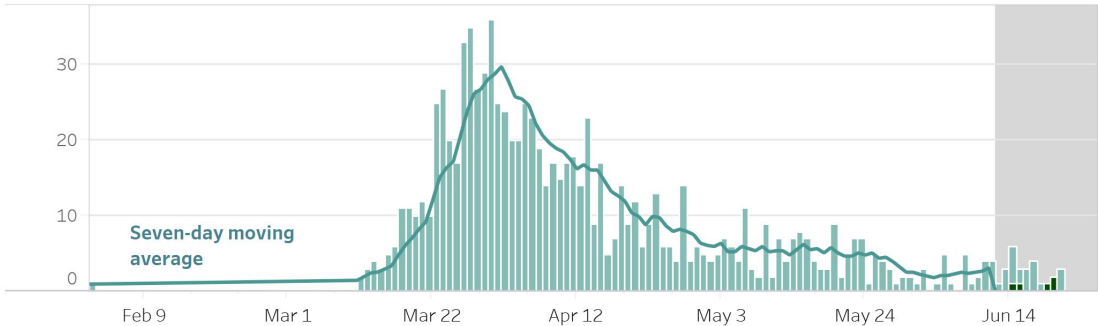
Cebu City	130
Cebu Province	52
Lapu-Lapu City (Opon)	45
Quezon City	43
Negros Occidental	29

**Note.** Data on healthcare workers affected by COVID-19, testing capacity by laboratory, equipment utilization, and LIGTAS COVID facilities will be included in the full situational report every Sunday.

CONFIRMED CASES BY DATE OF ONSET OF ILLNESS (NATIONWIDE)

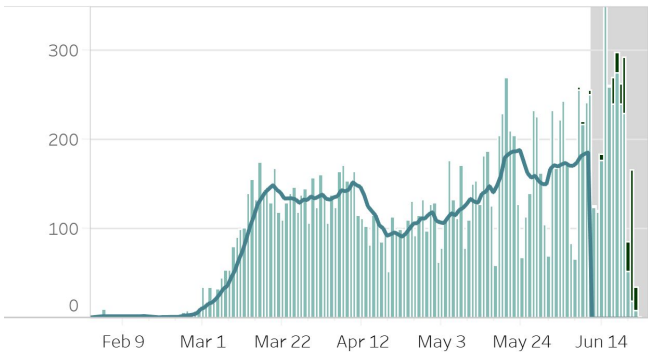


CONFIRMED DEATHS BY DATE OF DEATH (NATIONWIDE)

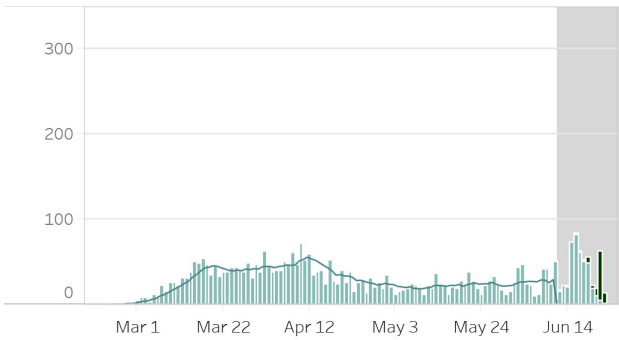


- Notes.**
- 1. Bars with dark green colors indicate the actual date of onset or date of death for newly-reported cases.
  - 2. In cases where date of onset of illness is unreported, date of specimen collection was used as proxy. Cases that do not have both are not accounted for in the date of onset histogram. As of this situation report, around 10% of cases have unreported dates of specimen collection and onset of illness.
  - 3. Owing to delays in reporting, case counts within the gray area are still incomplete. Hence, we urge caution in interpreting data beyond this 14-day cutoff. Rest assured that the DOH continues to work tirelessly to ensure the timely reporting of accurate data.

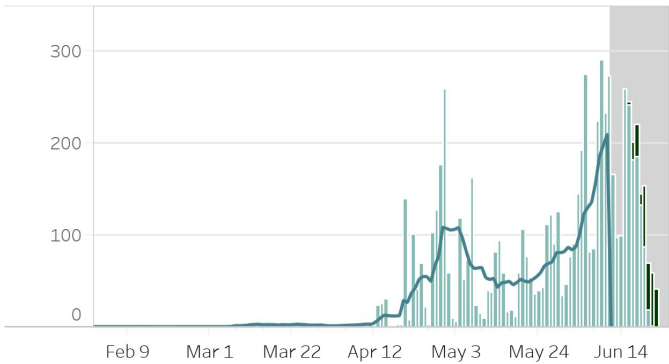
CONFIRMED CASES BY DATE OF ONSET OF ILLNESS (DISAGGREGATED)



NCR



Luzon



Visayas

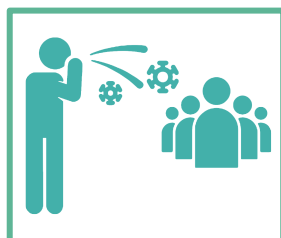


Mindanao

- Notes.**
- 1. Bars with dark green colors indicate the actual date of onset or date of death for newly-reported cases.
  - 2. The cases from the “NCR” graph have been separated from cases of the “Luzon” graph.
  - 3. Owing to delays in reporting, case counts within the gray area are still incomplete. Hence, we urge caution in interpreting data beyond this 14-day cutoff. Rest assured that the DOH continues to work tirelessly to ensure the timely reporting of accurate data.

COVID-19'S CAPACITY TO SPREAD ( $R_t$  VALUE)**1.28 ± 0.04** $R_t$  AS OF 8 JUNE  
(please see note)

↑ from 1.19 ± 0.04 (7 June)



The time-varying **reproduction number ( $R_t$ )** indicates the possible number of people being infected by a sick person, at a specific time with control measures in place.

**IMPORTANT NOTE.** The reproduction number is measured using symptom onset, we do not include in the interpretation the past 14-16 days given the time between symptoms, health seeking, testing, and reporting. When interpreting the reproduction number keep in mind that it is a **lagging indicator**. Also, please do not expect this number to change daily.

- The reproduction number ( $R_t$ ) was around 2 early on in the outbreak. This meant that each confirmed person with COVID was infecting 2 other people.
- Based on the latest data, we are 95 percent confident that  $R_t = 1.28 \pm 0.04$ , which means each infected individual was infecting an average of 1.28 other persons **around two weeks ago**.
- Lowering this value is made possible through efforts such as social distancing, wearing of PPE, and other means to stop the spread of the virus.
- The goal is for  $R_t$  to be less than 1, which would mean that, on average, an infected person is infecting less than one person, eventually stopping the transmission of COVID-19.

## TOP SEA COUNTRIES BY CONFIRMED CASES

	Indonesia	51,427
	Singapore	42,955
	Philippines	34,073
	Malaysia	8,606
	Thailand	3,162
	Vietnam	353
	Brunei	141
	Cambodia	130
	Laos	19

## UTILIZATION OF COVID-19 BEDS

**36.8%**489 ICU beds  
occupied out of  
1,330**39.4%**1,255 ward beds  
occupied out of  
3,185**37%**3,470 isolation  
beds occupied out  
of 9,370

**Note.** The number of confirmed severe and critical cases may not necessarily correspond to occupancy of ICU beds and mechanical ventilators as suspect and probable cases in severe or critical condition also utilize these resources.

## DAILY TESTING STATISTICS AS OF 26 JUNE 2020 (FRIDAY)

## Daily Testing Output (Nationwide)



## Daily Positivity Rate



## Daily Testing Statistics as of 26 June 2020 (Friday)

<b>Samples Tested</b>	12,548
<b>Individuals Tested</b>	11,925
<b>Positive Tests</b>	907
<b>Positivity Rate</b>	7.61%
<b>Testing Backlogs*</b>	1,329
<b>Compliance of Labs</b>	51/63

\*please see erratum

## Cumulative Testing Output

<b>Samples tested</b>	675,485
<b>Individuals Tested</b>	622,195
<b>Positive Tests</b>	43,240
<b>Positivity Rate</b>	6.95%

## Notes.

1. The DOH is continuously validating the number of positive individuals as reported by the laboratories. When necessary, they are deduplicated. As such, the discrepancy with the number of confirmed cases do not necessarily reflect backlogs in case validation.
2. Please visit [www.doh.gov.ph/covidtracker](http://www.doh.gov.ph/covidtracker) for details regarding the testing output per laboratory.
3. A 6 PM cut-off for the situation report is used, and so the numbers presented here are not yet final. A few laboratories submit data between 6 PM and the time the public data drop is generated.

## STATUS OF LABORATORY LICENSING

As of June 26, 2020

68	164	147	90%
NO. OF LICENSED RT-PCR LABORATORIES RT-PCR (49) GENEXPERT(19)	TOTAL NO. OF LABORATORY APPLICATIONS*	TOTAL NO. OF LABORATORIES STAGE 3 AND ABOVE*	% LABS ON STAGE 3 AND ABOVE*

\*Facilities using GeneXpert machines included.

## HIGHLIGHTS AND RECENT UPDATES ON COVID-19

- As of 26 June 2020, DOH recorded **active cases 23,667** with the majority of the patients exhibiting **mild symptoms** (22,649; 96%) while the number of patients on critical stage remains the same from yesterday's data (24; 0.1%).
- As of 26 June 2020, there are **3,346** healthcare workers who have been infected by COVID-19, of which 2,483 (74%) have recovered and 33 have died.
- As of 26 June 2020, a total of **77,727 Returning Overseas Filipino** arrived (Land-based: **28,072**; Sea-based: **49,655**). Of these, **66,567** were released from facility quarantine (Land-based: 21,080; Sea-based: 45,487). Among the Returning Overseas Filipino, **2,069** were confirmed COVID-19 (Land-based: 1,077; Sea-based: 992). Among the confirmed COVID-19 ROF, **533** are currently admitted (Land-based: 370; Sea-based: 163); 1,461 recovered; and 1 died.
- As of 26 June 2020, the DOH has approved a total of **8,576 slots** for hiring in 300 health facilities. Of these, 46.2% are hired in DOH hospitals, 14.6% in Temporary Treatment and Monitoring Facility, 13.3% in COVID-19 diagnostic facility, 11.3% in LGU and other hospitals, 7.7% in COVID-19 referral facility, 4.2% in Bureau of Quarantine managed quarantine facilities and airport units, 1.1% in Mega Ligtas COVID-19 Centers, 0.9% in Epidemiology and Surveillance Units, and 0.7% for other healthcare facilities.
- DOH launched the **Substance Abuse Helpline 1550** to ensure unhampered access to professional assistance for substance abuse amid mobility restrictions due to the community quarantine. One of the negative health effects of substance abuse is it increases the risk for COVID-19.



## Contact Details

For further information, you may reach us through the following platforms:

## SOCIAL MEDIA ACCOUNTS

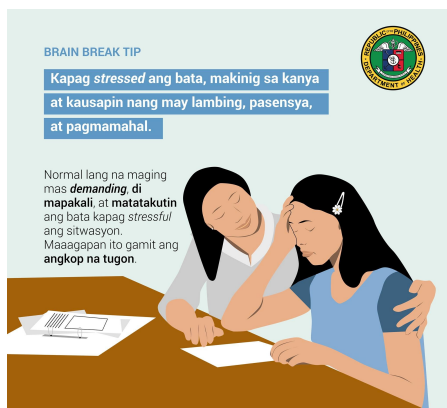
- f Facebook:**  
[fb.com/OfficialDOHgov](https://fb.com/OfficialDOHgov)
- Twitter:**  
[@DOHgovph](https://twitter.com/DOHgovph)
- Viber:**  
DOH PH COVID-19
- TikTok:**  
[@dohgovph](https://tiktok.com/@dohgovph)

## WEBSITES

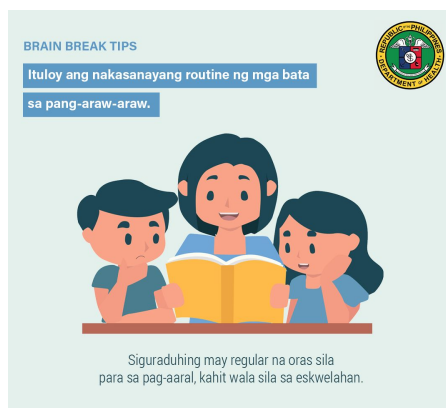
- DOH:**  
[www.doh.gov.ph](http://www.doh.gov.ph)
- Healthy Pilipinas:**  
[healthypilipinas.ph](http://healthypilipinas.ph)

## CONTACT NUMBERS

- (02) 894 - COVID (26843) or 1555 (for all subscribers)



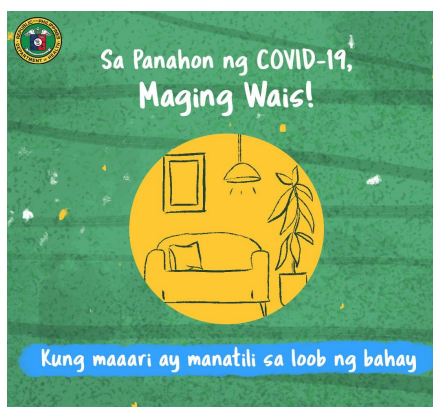
f OfficialDOHgov @DOHgovph doh.gov.ph (02) 894-26843



f OfficialDOHgov @DOHgovph doh.gov.ph (02) 894-26843



f OfficialDOHgov @DOHgovph doh.gov.ph (02) 894-COVID / 1555



f OfficialDOHgov @DOHgovph doh.gov.ph (02) 894-COVID / 1555

## ERRATUM:

Due to an encoding error in the submission of one laboratory, the total testing backlogs in COVID-19 Philippine Situationer Issue #060 read 7,891. It should only be 2,772. This error will be corrected in tomorrow's release of the Data Drop as well.

**THANK YOU** for checking out this issue of Beat-COVID-19 Today! We'd like to know what you think. Send us your feedback at [dohfeedback@gmail.com](mailto:dohfeedback@gmail.com).