

Beat COVID-19 Today

A COVID-19 Philippine Situationer



Issue 59 | June 25, 2020

Total Cases as of 24 June 2020

32,295

+470 (357 Fresh, 113 Late)

Active Cases (net of recoveries and deaths)

22,436

+238

Recovered

8,655

+214

Died

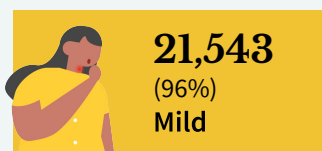
1,204

+18

Breakdown of Active Cases



A patient with an RT-PCR confirmed case of COVID-19 without symptoms.



A patient with mild symptoms and stable vital signs. Unless the patient belongs to high-risk subgroups or has comorbidities, they are often not admitted to a treatment facility.



A patient with difficulty breathing, altered mental status, considered high-risk or in need of hospital care.



A patient with impending or ongoing respiratory failure, in need of mechanical ventilation, or with evidence of end-organ damage.

Note. A person who is classified as having a mild case of COVID-19 but is considered high-risk due to age or the presence of comorbidities must be admitted to a treatment facility. Severe or critical cases must be admitted to a treatment facility, regardless of inclusion in high-risk subgroups or presence of comorbidities.

1,266

Probable Cases as of 24 June 2020

Previously termed as PUIs (mild or critical) with inconclusive or unofficial test results.

3,468

Suspect Cases as of 24 June 2020

Previously termed as PUIs (mild or critical) with no test done or awaiting test results.

Breakdown of cases per region

Top confirmed regions by active cases

NCR	9,598
Region VII: Central Visayas	5,886
Region IV-A CALABARZON	1,071
Region III: Central Luzon	407
Region VIII - Eastern Visayas	273

Top regions by newly-announced fresh cases

NCR	174
Region VII - Central Visayas	142
Region VI - Western Visayas	8
Region IV-A - CALABARZON	7
Region III - Central Luzon	4

Top confirmed provinces/ cities by active cases

Cebu City	3,819
Quezon City	1,367
City of Manila	1,200
Cebu Province	878
Caloocan City	513

Top provinces/cities by newly-announced fresh cases

Cebu City	46
Lapu-Lapu City (Opon)	40
Mandaue City	36
Cebu Province	18
Quezon City	12

Note. Data on healthcare workers affected by COVID-19, testing capacity by laboratory, equipment utilization, and LIGTAS COVID facilities will be included in the full situational report every Sunday.

CONFIRMED CASES BY DATE OF ONSET OF ILLNESS (NATIONWIDE)



CONFIRMED DEATHS BY DATE OF DEATH (NATIONWIDE)



Notes.

1. Bars with dark green colors indicate the actual date of onset or date of death for newly-reported cases.
2. In cases where date of onset of illness is unreported, date of specimen collection was used as proxy. Cases that do not have both are not accounted for in the date of onset histogram. As of this situation report, around 10% of cases have unreported dates of specimen collection and onset of illness.
3. Owing to delays in reporting, case counts after the dashed lines are still incomplete. Hence, we urge caution in interpreting data beyond this date. Rest assured that the DOH continues to work tirelessly to ensure the timely reporting of accurate data.

CONFIRMED CASES BY DATE OF ONSET OF ILLNESS (DISAGGREGATED)



NCR



Luzon



Visayas



Mindanao

Notes.

1. Bars with dark green colors indicate the actual date of onset or date of death for newly-reported cases.
2. The cases from the “NCR” graph have been separated from cases of the “Luzon” graph.
3. Confirmed cases from Mindanao remain lower compared to NCR, Luzon, and Visayas. Comparatively number of testing done in Mindanao is also lower than other regions. However, the positivity rate of Mindanao, 4.8% (as of 06/23/2020), and remains within WHO recommendations.

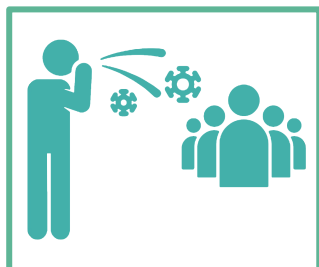
COVID-19'S CAPACITY TO SPREAD (R_t VALUE)

1.19 ± 0.04

NATIONWIDE R_t AS OF
7 JUNE (please see note)

The time-varying **reproduction number (R_t)** indicates the number of people being infected by a sick person.

IMPORTANT NOTE. The reproduction number is measured using symptom onset, we do not include in the interpretation the past 14-16 days given the time between symptoms, health seeking, testing, and reporting. That is, when interpreting the reproduction number, keep in mind that it is a **lagging indicator**.

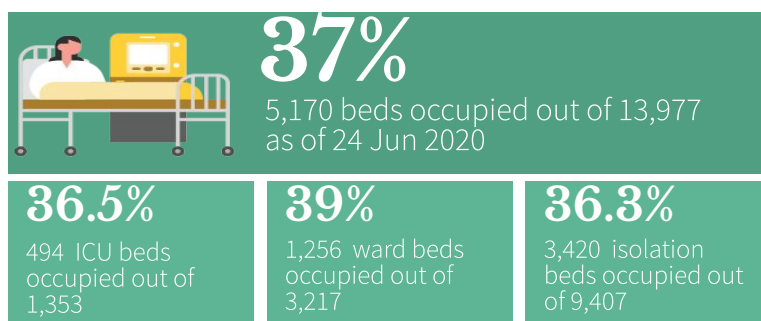


- The reproduction number (R_t) was around 2 early on in the outbreak. This meant that each confirmed person with COVID was infecting 2 other people.
- Based on the latest data, we are 95 percent confident that $R_t = 1.19 \pm 0.04$, which means each infected individual was infecting an average of 1.19 other persons **around two weeks ago**.
- This lower value is made possible through efforts such as social distancing, wearing of PPE, and other means to stop the spread of the virus.
- The goal is for R_t to be less than 1, which would mean that, on average, an infected person is infecting less than one person, eventually stopping the transmission of COVID-19.

TOP SEA COUNTRIES BY CONFIRMED CASES

	Indonesia	49,009
	Singapore	42,623
	Philippines	32,295
	Malaysia	8,596
	Thailand	3,157
	Vietnam	352
	Brunei	141
	Cambodia	130
	Laos	19

UTILIZATION OF COVID-19 BEDS



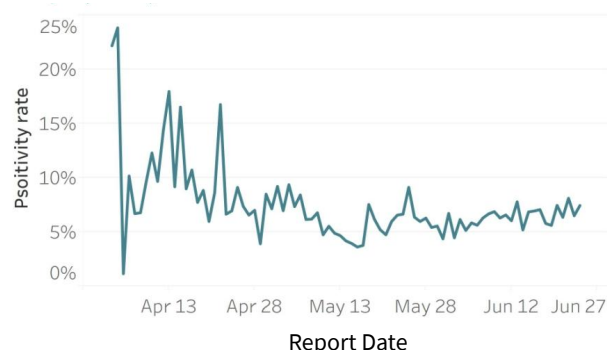
Note. The number of confirmed severe and critical cases may not necessarily correspond to occupancy of ICU beds and mechanical ventilators as suspect and probable cases in severe or critical condition also utilize these resources.

DAILY TESTING STATISTICS AS OF 24 JUNE 2020 (WEDNESDAY)

Daily Testing Output (Nationwide)



Daily Positivity Rate



Daily Testing Statistics as of 24 June 2020 (Wed)

Samples Tested	12,771
Individuals Tested	11,633
Positive Tests	867
Positivity Rate	7.45%
Testing Backlogs	2,023
Compliance of Labs	54/63

Cumulative Testing Output

Samples tested	645,107
Individuals Tested	593,372
Positive Tests	41,086
Positivity Rate	6.92%

Notes.

1. The DOH is continuously validating the number of positive individuals as reported by the laboratories. When necessary, they are deduplicated. As such, the discrepancy with the number of confirmed cases do not necessarily reflect backlogs in case validation.
2. Please visit www.doh.gov.ph/covidtracker for details regarding the testing output per laboratory.

STATUS OF LABORATORY LICENSING

As of June 24, 2020

67	163	147	90%
NO. OF LICENSED LABORATORIES: RT-PCR (49) GENEXPERT (18)	TOTAL NO. OF LABORATORY APPLICATIONS*	TOTAL NO. OF LABORATORIES STAGE 3 AND ABOVE*	% LABS ON STAGE 3 AND ABOVE*

UPDATES ON COVID-19

- DOH recorded **22,436 active cases** as of June 24, with the majority of the patients exhibiting **mild symptoms** (21,543; 96%) while the number of patients on critical stage increased. (24; 0.1%).
- As of June 24, 2020, there are **3,291** healthcare workers who have been infected by COVID-19, of which 2,398 (73%) have recovered and 33 have died.
- The DOH lauds the health and sanitation precautions being made by salons and barber shops to ensure that their customers are safe and protected from the virus. Included in the "new normal" are the gradual opening up of our economy and the partial release of community restrictions. It also includes opening personal care services to serve our fellow citizens.
- As we help our economy recover from the lockdown, the DOH reminds the public not to forget that we still have a virus to fight. We are all part of the solution. Each one of us is reminded to remain vigilant and mindful of the health and safety protocols that we need to constantly follow.
- Let us be responsible for ourselves, for our loved ones, and for all the members of the community. That's the true essence of being a BAYANi and real deal against COVID-19.

MINIMUM HEALTH STANDARDS: FAQs - FOOD AND DINING



Q: Bilang customer sa isang kantina, restaurant, at iba pang kainan, ano ang dapat kong piliin upang mapanatili kong malusog ang aking sarili?

A: Pumili ng iba't ibang uri ng pagkain. Siguraduhing may Go, Grow, at Glow ang kakainin. Iwasang umorder ng pagkaing sobrang taba, tamis, at alat.



MINIMUM HEALTH STANDARDS: FAQs - PLACES OF WORSHIP



Q: Paano mapapanatili ng mga nagsisimba, tagasunod ng kanila relihiyon at mga empleyado ang kanilang kalusugang pisikal at mental?

A: Kumain ng masustansya, laging isaisip ang prinsipyong Pinggang Pinoy ng DOH. Iwasang kumain ng pagkain na sobrang tamis, alat, at taba.



Contact Details

For further information, you may reach us through the following platforms:

SOCIAL MEDIA ACCOUNTS

- Facebook:**
fb.com/OfficialDOHgov
- Twitter:**
[@DOHgovph](https://twitter.com/DOHgovph)
- Viber:**
DOH PH COVID-19
- TikTok:**
[@dohgovph](https://tiktok.com/@dohgovph)

WEBSITES

- DOH:**
www.doh.gov.ph
- Healthy Pilipinas:**
healthypilipinas.ph

CONTACT NUMBERS

- (02) 894 - COVID (26843) or 1555 (for all subscribers)
- Telemedicine hotlines (NCR):
TeleMed: (02) 8424 1724
KonsultaMD (02) 7798 8000

THANK YOU for checking out this issue of Beat-COVID-19 Today! We'd like to know what you think. Send us your feedback at dohfeedback@gmail.com.