

Beat COVID-19 Today

A COVID-19 Philippine Situationer



Issue 29 | May 26, 2020

Highlights and Recent Updates on COVID-19

- DOH recorded **10,123 active cases** as of May 25, with the majority of the patients exhibiting **mild symptoms** (9,260; 91.5%).
- A total of **2,420** (17% of all cases) **healthcare workers** have been affected by COVID-19, with **1,163 recoveries** and 31 deaths.
- With the easing of quarantine restrictions in different parts of the country, DOH and DTI strongly reminded the public and mall operators to **strictly implement the official guidelines on mall operations**. DOH stressed the **importance of maintaining the minimum health standards** particularly in public spaces such as malls under the MECQ and GCQ.
- To provide guidance to public and private offices, homes, and individuals on the **use of chemical disinfectant** such as sodium or calcium hypochlorite solution for **infection prevention and control against COVID-19**, DOH has issued Department Memorandum No. 2020-0157 or Guidelines on Cleaning & Disinfection in Various Settings as an Infection Prevention & Control Measure Against COVID-19.
- In light of the observance of **International Thyroid Awareness Week**, DOH advises the public to take precautions and know the **signs and symptoms of hypothyroidism** (e.g. tiredness, decrease or increase in weight, low or increased in appetite, depression, dryness of skin and hair, sleepiness, diarrhea or constipation) **for early detection and prevention** of complications of the disease. If signs and symptoms are observed, visit the nearest health center or health facility.

Case Summary

As of May 25, 2020

14,319

Total Cases

*total includes validated cases only

14,035

Previous day

284

Additional Cases



3,323

Recoveries

74 added



873

Deaths

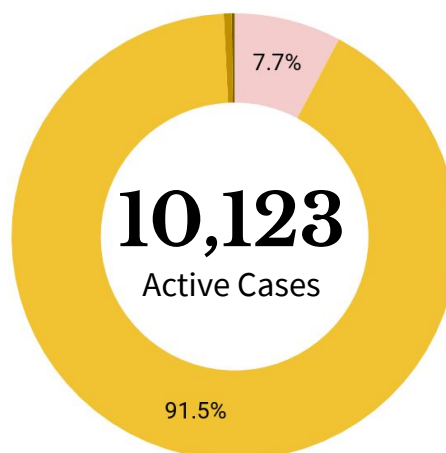
5 added

10,123

Active Cases

(net of recoveries and deaths)

Active Cases Breakdown



- Asymptomatic
- Mild
- Severe
- Critical



784

Asymptomatic

634

Pending Admission Status

94

Admitted

56

Home Isolation



9,260

Mild

7,972

Pending Admission Status

1,159

Admitted

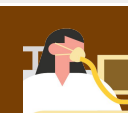
129

Home Isolation



58

Severe



21

Critical

Probable Cases

As of May 25, 2020



819

Total Cases

Suspect Cases



25,741

Total Cases

SEVERE: Pneumonia, Difficulty of Breathing

CRITICAL: Intubated

PROBABLE: Previously termed as PUIs (mild or critical) with inconclusive or unofficial test results.

SUSPECT CASES: Previously termed as PUIs (mild or critical) with no test done or awaiting test results.

Goal: Shortening Duration of Infectiousness

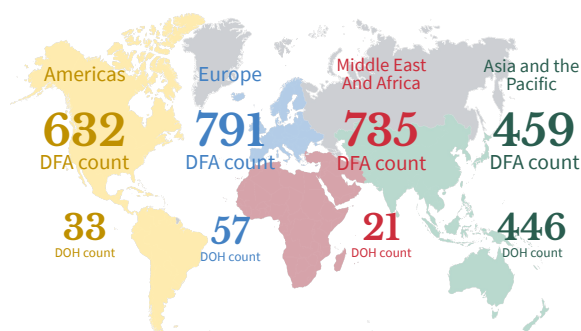
Case Summary of Overseas Filipinos (OFs)

As of May 25, 2020



DOH Counts validated through the International Health Regulation (IHR), 24 cases for validation of disposition

REGIONAL DISTRIBUTION



TOP COUNTRIES WITH COVID-19

WHO data as of May 25, 2020

Top 3 countries with the highest number of cases

USA 1,592,599

RUSSIA 353,427

BRAZIL 347,398

Asian country with the highest number of confirmed cases outside China

IRAN 135,701

Southeast Asian country with the highest number of confirmed cases

SINGAPORE 31,616

Healthcare Workers affected by COVID-19

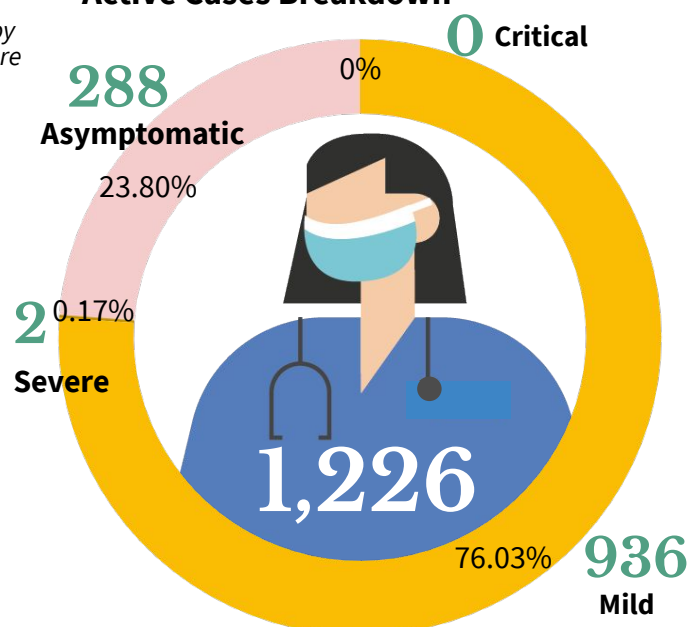
As of May 25 2020

Note: There were inconsistencies on previously reported decedent by profession. Correct professions upon validation of HCWs who died are reflected in this report.



Top 5 Medical Profession/Cadre With COVID-19 cases	Total Number	Deaths
Nurse	879	4
Physician	682	25
Nursing Assistant	148	0
Medical Technologist	89	0
Radiologic Technologist	45	0
Non-medical Staff	304	2

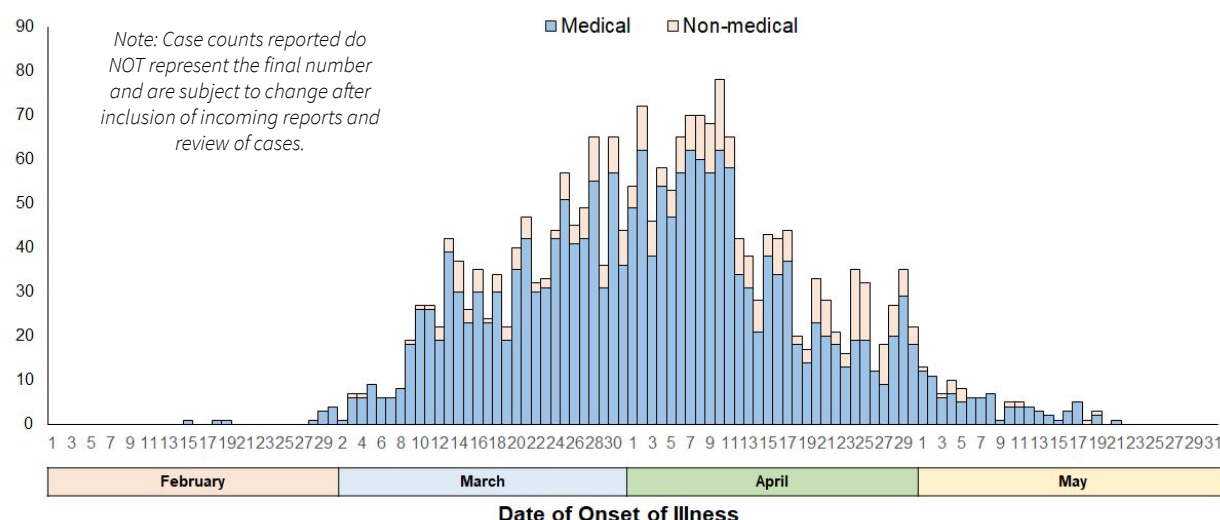
Active Cases Breakdown



Healthcare Workers with confirmed COVID-19 by Date of Onset of Illness (N= 2,420)

No. of Cases

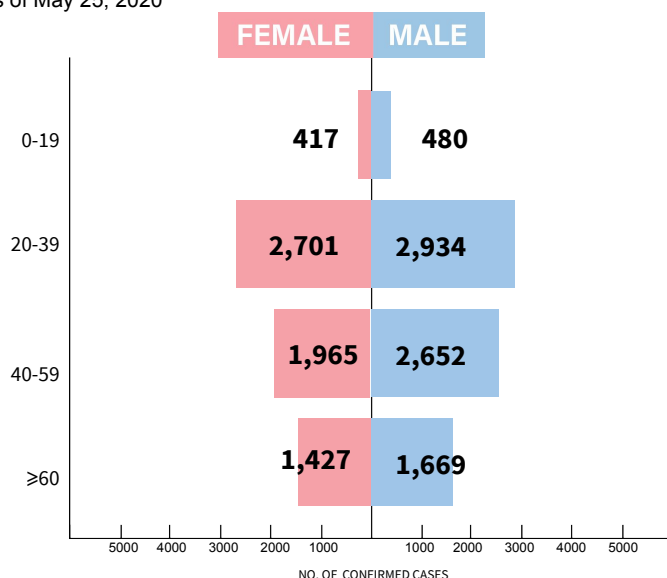
Philippines, as of May 25, 2020



Goal: Shortening Duration of Infectiousness

Age and Sex Distribution of confirmed cases

As of May 25, 2020



Most of the confirmed cases are Male (7781 or 54%). Most cases are within the 20-39 age group. Seventy-four cases (28-female; 46-male) with unspecified age are included in the total.



Average hospital length of stay for recovered patients is at **17 days**.

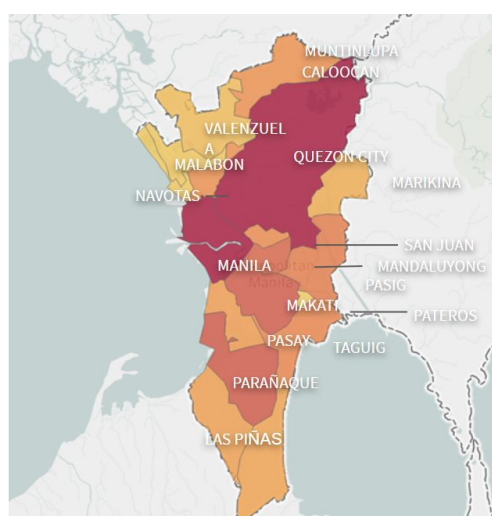
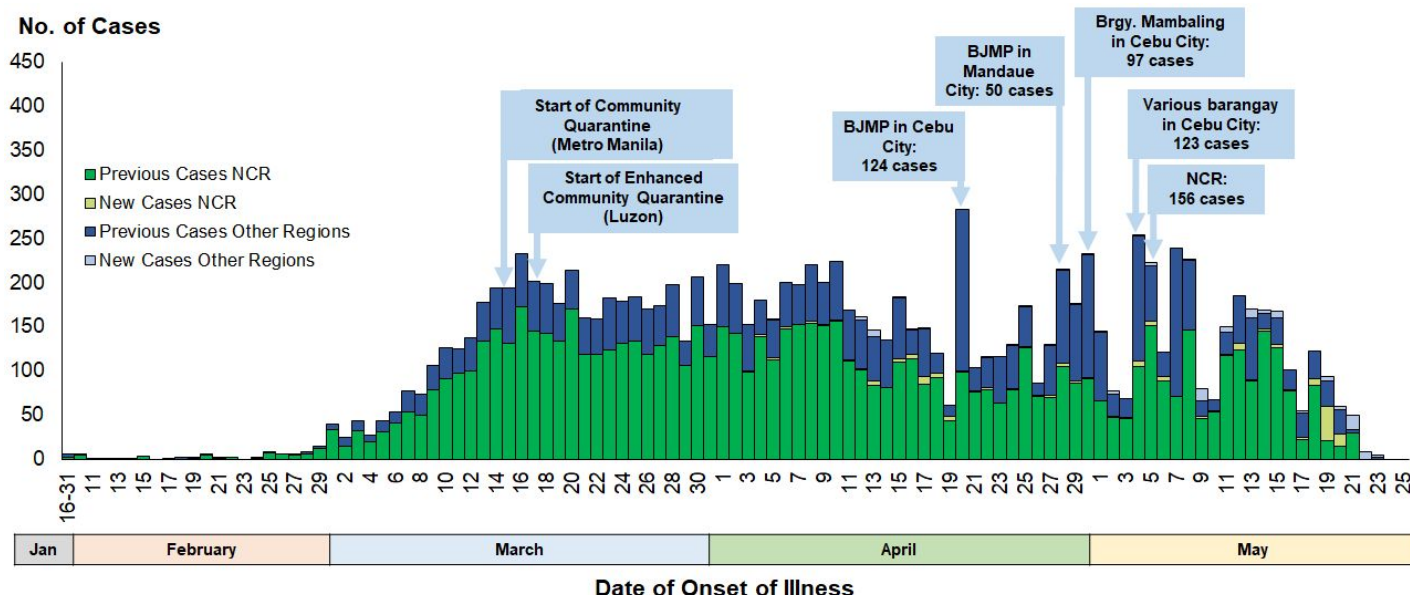


A total of 455 (52%) deaths had known comorbidities: top 2 comorbidities are hypertension (281 or 62%) and diabetes (212 or 47%).

Confirmed COVID-19 Cases by Date of Onset of Illness (N = 14,319)

Philippines, as of May 25, 2020

Note: Case counts reported do NOT represent the final number and are subject to change after inclusion of incoming reports and review of cases.



A total of 9,234 (64%) are confirmed cases from NCR. The proportion of cases in NCR decreased from 72% since January (start of case detection) to April 19, 2020 to 59% for the period of April 20 to May 25, 2020. However, on May 5, 2020, 156 cases were reported in NCR—highest since April 11.

Meanwhile, cases in Region 7 increased in proportion from 2% to 22% for the similar period. On May 4, 2020, 123 (49%) out of the 254 confirmed cases nationwide (by date of onset), were reported from various barangay in Cebu City. Region 7 recorded a total of 2,019 (14%) confirmed cases, the second highest reported in the country.

Region 4-A has the third highest cases with a total of 1,509 (11%) confirmed cases as of yesterday. Since start of case detection, the proportion of cases in Region 4A decreased from 15% to 6% for the period of April 20 to May 25.

INDIVIDUALS TESTED AS REPORTED BY COVID-19 LABORATORIES

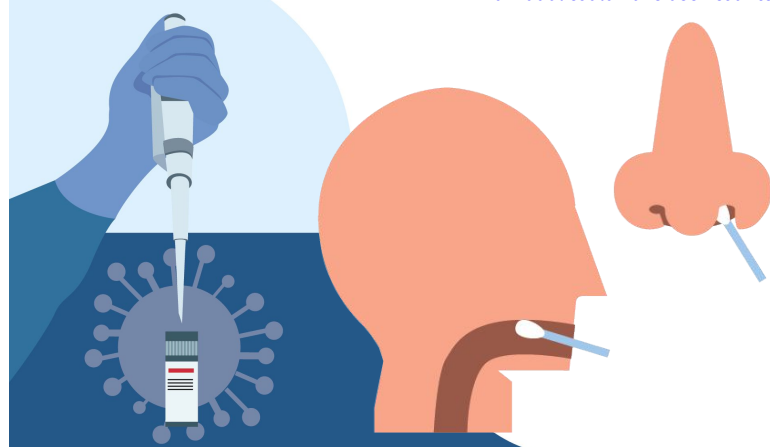
As of May 25, 2020

Note: The results of reported laboratory positive individuals are undergoing case information, validation, and processing and may not be reflected on the official case summary of the day.

FACILITY NAME	DAILY OUTPUT (MAY 25)				CUMULATIVE				
	UNIQUE POSITIVE INDIVIDUALS	UNIQUE NEGATIVE INDIVIDUALS	UNIQUE INDIVIDUALS TESTED	SAMPLE TESTED (with results)	UNIQUE POSITIVE INDIVIDUALS	UNIQUE NEGATIVE INDIVIDUALS	UNIQUE INDIVIDUALS TESTED	SAMPLES TESTED	Remaining Available Tests
RT-PCR laboratories									
Allegiant Regional Care Hospital	6	34	40	40	43	157	200	200	520
Asian Hospital and Medical Center	1	57	58	60	14	255	269	276	6,100
Baguio General Hospital and Medical Center	0	252	252	338	84	12,593	12,677	14,389	15,954
Bicol Regional Diagnostic and Reference Laboratory (BRDRL)	0	0	0	0	53	1,461	1,514	1,543	13,717
Cebu TB Reference Laboratory - Molecular Facility for COVID-19 Testing	35	91	126	126	262	2,385	2,647	2,676	7,438
Chinese General Hospital	72	590	662	6632	960	7,401	8,361	8,3807	1,496
De La Salle University - Cavite	0	60	60	60	26	1,507	1,533	1,536	8,512
Detoxicare Molecular Diagnostics Laboratory	23	139	162	1623	648	11,151	11,799	11,829	0
Divine Word Hospital	0	24	24	24	0	228	228	283	1,773
Eastern Visayas Regional Covid Testing Center	2	90	92	92	8	751	759	763	3,120
Jose B. Lingad Memorial Regional Hospital	0	0	0	0	17	1,503	1,520	1,562	43,361
Lung Center of the Philippines (LCP)	1	21	22	22	724	14,710	15,434	15,479	3,900
Makati Medical Center (MMC)	6	82	88	92	235	3,632	3,867	4,178	6,783
Marikina Molecular Diagnostics Laboratory (MMDL)	2	32	34	41	76	1,496	1,572	1,669	35
Philippine Red Cross (PRC)	82	1,088	1,170	1,170	1,567	37,726	39,293	39,671	50,000
Philippine Red Cross Logistics & Multipurpose Center	0	0	0	0	933	31,061	31,994	32,146	50,000
Research Institute for Tropical Medicine (RITM)	30	728	758	831	8,055	63,181	71,236	82,485	546,924
San Lazaro Hospital (SLH)	3	44	47	107	426	9,482	9,908	11,337	340
Singapore Diagnostics	7	173	180	180	218	1,891	2,109	2,224	5,500
Southern Philippines Medical Center (SPMC)	21	109	130	188	319	7,145	7,464	9,149	15,733
St. Luke's Medical Center - BGC (SLMC-BGC)	20	182	202	341	872	8,736	9,608	12,002	22,000
St. Luke's Medical Center - Quezon City (SLMC-QC)	NO SUBMISSION AS OF 3 PM.				1,029	4,135	5,164	6,573	7,614
The Medical City (TMC)	10	103	113	121	598	3,394	3,992	4,135	2,799
UP National Institutes of Health (UP-NIH)	16	80	96	120	1,311	7,337	8,648	9,387	6,280
UP-PGH Molecular Laboratory	8	25	33	53	105	862	967	1,056	4,012
UP Philippine Genome Center	0	0	0	0	295	1,409	1,704	1,874	8,700
Vicente Sotto Memorial Medical Center (VSMCMC)	75	284	359	396	2,283	12,927	15,210	16,341	10,140
Victoriano Luna - AFRIMS	0	22	22	22	12	1,547	1,559	1,594	8,004
Western Visayas Medical Center (WVMC)	1	193	194	201	109	9,380	9,489	10,462	11,160
ZCMC-DA Satellite Laboratory	0	0	0	0	8	213	221	239	1,944
GenXpert Laboratories									
Cotabato Regional Medical Center	11	45	56	56	13	156	169	170	969
Lung Center of the Philippines GeneXpert Laboratory	0	0	0	0	161	815	976	988	1,322
Northern Mindanao Medical Center	1	11	12	12	2	46	48	48	1,692
Ospital ng Palawan GeneXpert Laboratory	0	4	4	4	0	7	7	7	590
Zamboanga City Medical Center GeneXpert Laboratory	0	13	13	13	119	658	777	783	612
TOTAL	433	4,576	5,009	5,535	21,585	261,338	282,923	307,434	869,044

CUMULATIVE DATA AS OF MAY 25, 2020

Disclaimer: Unique individuals should still be taken as approximate, since there is still the possibility that the same individual could have been counted twice if they took more than one test on different days or even across different labs



21,585 (7.6%)

Total Positive Individuals

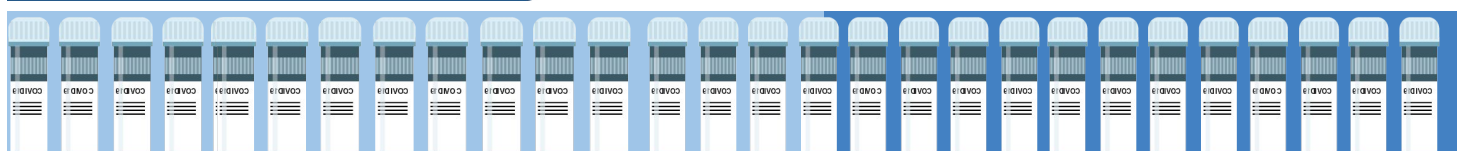
*total includes both validated and unvalidated cases

282,923

Total Unique Individuals Tested

307,434

Total Tests Conducted



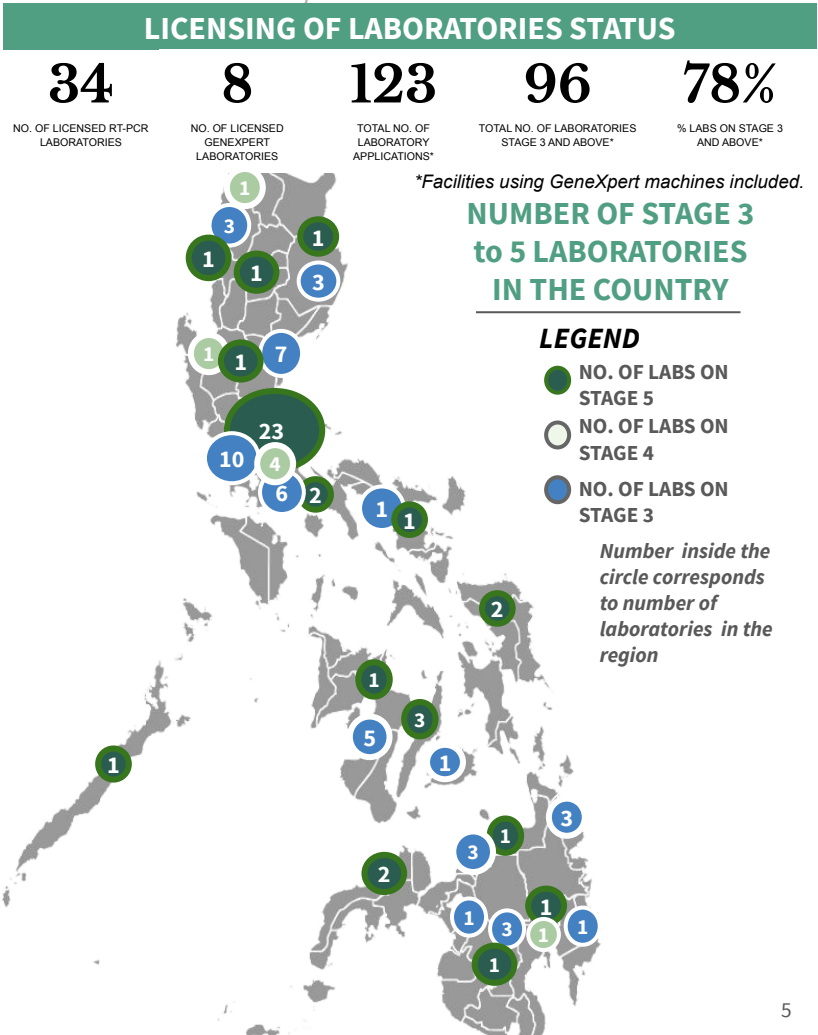
FACILITY NAME	REGION	STAGE
Research Institute for Tropical Medicine	NCR	V
San Lazaro Hospital		
UP National Institutes of Health		
Lung Center of the Philippines		
St. Luke's Medical Center- QC		
The Medical City - Ortigas		
Victoriano Luna - AFRIMS		
Detoxicare Molecular Diagnostics Laboratory		
St. Luke's Medical Center - BGC		
Makati Medical Center		
Philippine Red Cross		
Chinese Gen. Hospital		
PRC-PLMC		
Philippine Genome Center UP-Diliman		
Marikina Molecular Diagnostic Laboratory		
UP-PGH Molecular Laboratory		
Singapore Diagnostic, Inc.		
Asian Hospital & Medical Center		
PNP Crime Laboratory		
National Kidney and Transplant Institute		
Baguio General Hospital and Medical Center	CAR	
Ilocos Training Regional Medical Center	I	
J B. Lingad Memorial Hospital	III	
De La Salle University - Cavite	IV-A	
Lucena United Doctors Hospital and Medical Center		
Bicol Regional Diagnostic and Reference Laboratory	V	
Western Visayas Medical Center	VI	
Allegiant Regional Care Hospital	VII	
Vicente Sotto Memorial Medical Center		
Cebu TB Reference Laboratory		
Eastern Visayas Regional Medical Center	VIII	
Divine Word Hospital		
Zamboanga City Medical Center - DA Satellite Lab	IX	
Southern Philippines Medical Center	XI	
PRC-Port Area	NCR	IV
Hi-Precision (QC)		
Safeguard DNA Diagnostics		
Tropical Disease Foundation		
Davao One World Diagnostic Center Incorporated	XI	
ABC Clinical Laboratory	NCR	III
Fe del Mundo Medical Center		
Philippine Children's Medical Center		
Mariano Marcos Memorial Hospital	I	
Cagayan Valley Medical Center	II	
Southern Isabela Medical Center		
The Medical City - Clark	III	
Bataan General Hospital		
Green City Medical Center		
Philippine Red Cross Clark Molecular Laboratory		
Philippine Red Cross - Logistics and Training Center		
Batangas Medical Center	IV-A	
San Pablo College Medical Center		
Laguna Provincial Hospital - San Pablo City District Hospital		
Calamba Medical Center		
Ospital ng Imus	VI	
Bacolod Queen of Mercy Hospital		
Teresita Jalandoni Provincial Hospital		
Corazon Locsin Montelibano Memorial Regional Hospital		
Western Visayas State University Medical Center		
Governor Celestino Gallares Memorial Medical Center (Bohol)	VII	
Northern Mindanao Medical Center	X	
Northern Mindanao TB Regional Center		
Polymedic Medical Plaza		
Cotabato Regional Medical Center	BARM	
Adela Serra TY Memorial Medical Center	CARAGA	
CARAGA Regional Hospital		

Additional laboratory for May 25

FACILITY NAME (RT-PCR using Gene Xpert)	REGION	STAGE
Zamboanga City Medical Center	IX	V
Cagayan Valley CHD TB Reference Laboratory	II	
Dr. Jose B. Rodriguez Memorial Hospital and Sanitarium (TALA)	NCR	
Lung Center of the Philippines		
Tondo Medical Center		
Northern Mindanao Medical Center	X	
Ospital ng Palawan	IV-B	
Cotabato Regional Medical Center	XII	
Bataan General Hospital	III	IV
Mariano Marcos Memorial Hospital	I	
Regional 1 Medical Center	I	III
Ilocos Training Regional Medical Center		
Cagayan Valley Medical Center	II	
Central Luzon Doctor's Hospital	III	
President Ramon Magsaysay Provincial Hospital		
Philippine Tuberculosis Society, Inc.- Quezon Institute	NCR	
San Lazaro Hospital		
Tropical Disease Foundation		
Philippine Heart Center		
Amang Rodriguez Memorial Center		
Jose R. Reyes Memorial Medical Center		
Las Pinas General Hospital		
Bicol Medical Center	V	
Western Visayas Medical Center (WVMC)	VI	
Rakkk Prophet Medical Center Inc.	IV-A	
Butuan Medical Center	CARAGA	
Davao Doctors' Hospital	XI	
Davao Regional Medical Center		
Davao TB Reference Laboratory		
Dr. Arturo Pingoy Medical Center	XII	

STATUS OF LABORATORY LICENSING

As of May 25, 2020



Goal: Increase Resilience, Stop Transmission, Reduce Contact

BEHAVIORAL MESSAGES OF THE DAY

As of May 25, 2020

- Repatriates that finished the 14-day quarantine period are advised to wear face masks at all times, observe proper cough manners and hand hygiene, and maintain physical distancing with others, during their travel back home.
- As the country ushers into the New Normal era, minimum health standards are essential to keep everyone healthy and safe. [Students, teachers and school staff](#) are encouraged to eat nutritious food and exercise at least 15 minutes' daily to strengthen immune system while at home. This will enable them to get ready for the opening of classes.
- Family members are encouraged to call or video chat their older relatives as often as possible to provide emotional support during the quarantine. This may help lessen mental stress and loneliness.
- Even during the transition to the New Normal era, relevant health concerns should also be prioritized. In light of the [International Thyroid Awareness Week](#) (May 25-31, 2020), people must know the signs and symptoms of hypothyroidism like depression, weight gain, fatigue and increased sensitivity to cold, for early detection and prevention of complications of the disease. Go to the nearest health center or health facility if signs and symptoms are observed.

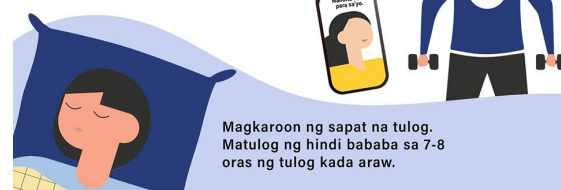
MINIMUM HEALTH STANDARDS: FAQs - SCHOOL



Q: Paano mapapanatili ng mga guro, estudyante at iba pang staff ng eskwelehan ang kanilang kalusugang pisikal at mental?

A: Mag-ehersisyo araw-araw. Siguraduhin na hindi ito bababa sa 15 minuto para mas mapabuti ang resistensya.

Regular na makipag-usap sa mga kaibigan sa pamamagitan ng tawag o video chat sa social media.



Magkaroon ng sapat na tulog. Matulog ng hindi bababa sa 7-8 oras ng tulog kada araw.

f OfficialDOHgov @DOHgovph doh.gov.ph (02) 894-COVID / 1555



f OfficialDOHgov @DOHgovph doh.gov.ph (02) 894-COVID / 1555

WHEN DO I CONTACT THE BARANGAY HEALTH EMERGENCY RESPONSE TEAM (BHERT)?

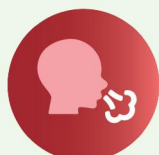
These are the SEVERE SYMPTOMS you need to watch out for:



Difficulty breathing



Mental confusion or changes in alertness



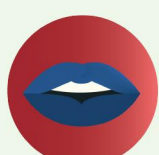
Shortness of breath



Drowsiness and/or difficulty waking up



Persistent pain or pressure in the chest



Pale, bluish face and lips

In case you experience any of the following severe symptoms, call your **Barangay Health Emergency Response Team (BHERT)** immediately. They will refer you to the appropriate facility close to your residence.

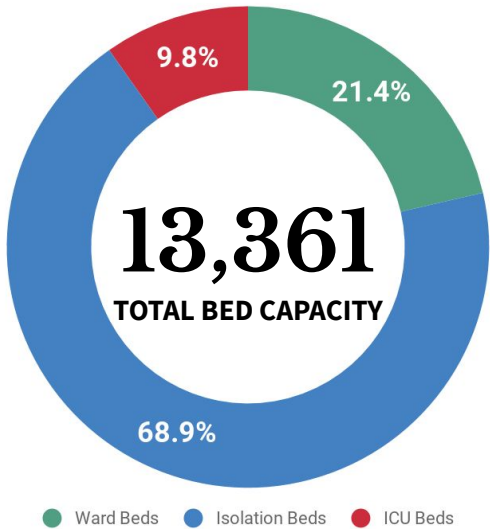


Goal: Enhance quality, consistency, and affordability of care provision

HOSPITAL BEDS AND MECHANICAL VENTILATORS DEDICATED TO COVID-19 CASES

Data taken from the DOH DataCollect App. Specific for COVID-19 cases.

As of May 25, 2020



Data as of 11:59 PM, May 25, 2020. The most recent submission of the facility was included in the analysis. The overall submission rate is 99.5% for hospitals and 99.5% for infirmaries.



972
Ward beds occupied

1,885
available

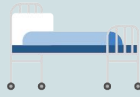


Ward beds for confirmed COVID-19 cases



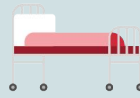
3,257
Isolation beds occupied

5,943
available



475
ICU beds occupied

829
available



358
Mech vents in use

1,600
available



DEDICATED BEDS FOR COVID-19 CASES IN TTMFs

As of May 25, 2020

Local Isolation and General Treatment Areas for COVID-19 cases (LIGTAS COVID centers) are community-managed facilities dedicated to quarantine or isolation of suspected COVID-19 cases.



45,855
BEDS IN LIGTAS COVID FACILITIES

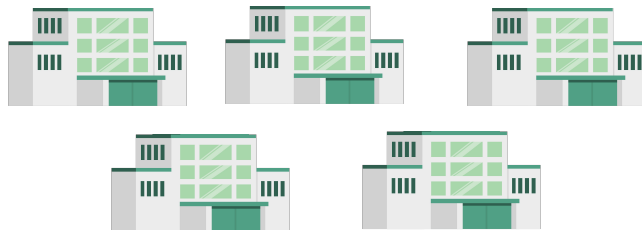
NCR	1,266
CAR	319
REG I	7,999
REG II	1,354
REG III	1,219
REG IV-A	3,425
REG IV-B	782
REG V	6,932
REG VI	3,054

REG VII	9,054
REG VIII	1,175
REG IX	1,250
REG X	2,524
REG XI	2,957
REG XII	1,345
REG XIII	786
BARMM	414
TOTAL	45,855

MEGA LIGTAS AND LIGTAS COVID-19 FACILITIES

As of May 25, 2020

Mega LIGTAS COVID-19 Facilities are facilities dedicated for quarantine and isolation which are managed by the National Government



5 MEGA LIGTAS COVID FACILITIES

REGION	TTMF	Beds
NCR	PICC	294
NCR	World Trade Center	502
NCR	Rizal Memorial Coliseum	132
NCR	Ninoy Aquino Stadium	120
REG III	Philippine Arena	300
TOTAL		1,348

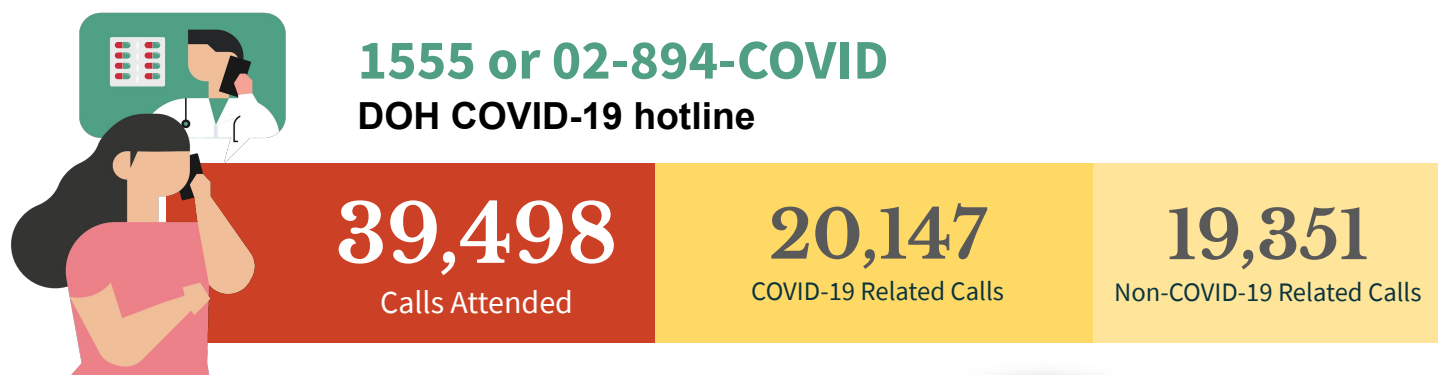
PERSONAL PROTECTIVE EQUIPMENT AND OTHER HEALTH EQUIPMENT DISTRIBUTED

May 25, 2020



CALLS CATERED BY TELEMEDICINE

May 20, 2020

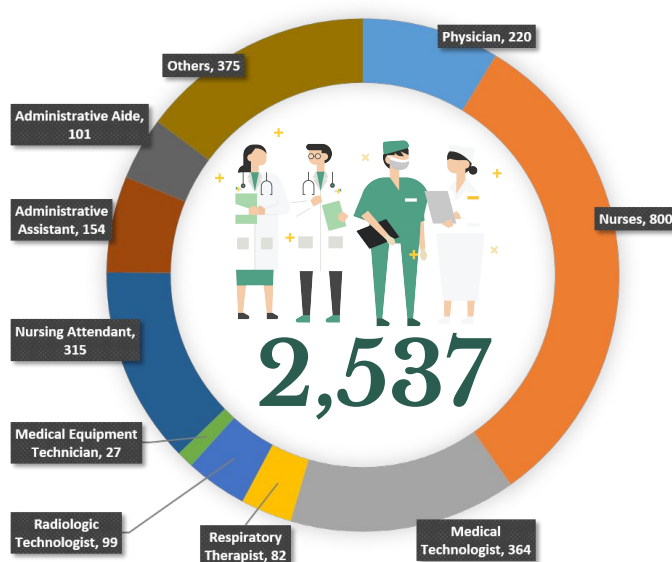


HUMAN RESOURCES FOR HEALTH (HRH) AUGMENTATION

As of May 25, 2020

HIRED HEALTH WORKERS PER PRIORITY FACILITY

Facility	No.
COVID Referral Hospital	294
National TTMF	365
DOH designated Facility	360
Quarantine Facility (BOQ)	106
DOH Hospital	1,324
Private Diagnostic Facility	10



195

Number of facility requests received

6,697

Number of HRH slots approved for hiring

P263M

Total amount sub-allotted/transferred



TREATMENT

For case management of COVID-19 patients, healthcare providers are advised to adhere to the existing [PSMID Guidelines](#).

FOOD AND DRUG ADMINISTRATION (FDA)

The Food and Drug Administration (FDA) has issued FDA Circular No. 2020-0171¹ to inform all concerned stakeholders and partners regarding the prohibition on the selling of essential emergency medicines and medical devices beyond the price ceiling/range set by the Department of Health.

The public is encouraged to check the authorization status of establishments and health products at the FDA website [here](#).

PHILHEALTH FOR ALL

In order to better understand PHILHEALTH Circular No. 2020-00121², the Philippine Health Insurance Corporation has issued Frequently Asked Questions in their social media page.

Check the FAQs [here](#), and check PHILHEALTH FB page for updates [here](#).

POLICY IN-FOCUS

In order to provide guidance, the Department of Health has issued Department Memorandum No. 2020-0157³ "Guidelines on Cleaning & Disinfection in Various Settings as an Infection Prevention & Control Measure Against COVID-19".

For the purposes of these guidelines; **Cleaning** refers to the removal of microbes, dirt, and impurities from surfaces. Cleaning does not kill microbes, but by removing them, it lowers their numbers and the risk of spreading infection. **Disinfection** refers to the use of chemicals to kill microbes on surfaces. This process does not necessarily clean dirty surfaces or remove microbes, but by killing microbes on a surface after cleaning, it can further lower the risk of spreading infection.

Check the FAQs [here](#).

Contact Details

For further information, you may reach us through the following platforms:

SOCIAL MEDIA ACCOUNTS

- f Facebook:**
fb.com/OfficialDOHgov
- Twitter:**
[@DOHgovph](https://twitter.com/DOHgovph)
- Viber:**
DOH PH COVID-19
- TikTok:**
[@dohgovph](https://tiktok.com/@dohgovph)

WEBSITES

- DOH:**
www.doh.gov.ph
- Healthy Pilipinas:**
healthypilipinas.ph

CONTACT NUMBERS

- ☎ (02) 894 - COVID (26843) or 1555 (for all subscribers)
- ☎ Telemedicine hotlines (NCR):
TeleMed: (02) 8424 1724
KonsultaMD: (02) 7798 8000

Resources

1. FDA Circular No. 2020-0171
<https://www.fda.gov.ph/wp-content/uploads/2020/05/FDA-Circular-No.2020-017.pdf>
2. PHILHEALTH Circular No. 2020-0012
<https://www.philhealth.gov.ph/circulars/2020/circ2020-0012.pdf>
3. DM 2020-0157 Guidelines on Cleaning & Disinfection in Various Settings as an Infection Prevention & Control Measure Against COVID-19
<https://drive.google.com/file/d/1ROLkxBLz8aNGoFKligA3N3RsdBOGx8Pm/view>

ERRATA FOR SITUATIONER #028:

- The correct DFA count for OFs was 2,523 not 2,623 Age-Sex Distribution Graph: X-axis has already been corrected to represent the highest number in the graph.
- Bars for the beds were changed to show the difference in numbers reported per COVID beds.
- The total number of bed capacity is the correct total. However, the total number of number for the wards available should be 1,885 instead of 882.
- The other disclaimer on page 5 was deleted.
- The total number of beds in LIGTAS COVID Facilities, 45,855 is the correct total, not the one reflected below which is 45,855.

THANK YOU for checking out the 29th issue of Beat COVID-19 Today! We'd like to know what you think. Send us your feedback at dohfeedback@gmail.com