

Beat COVID-19 Today

A COVID-19 Philippine Situationer



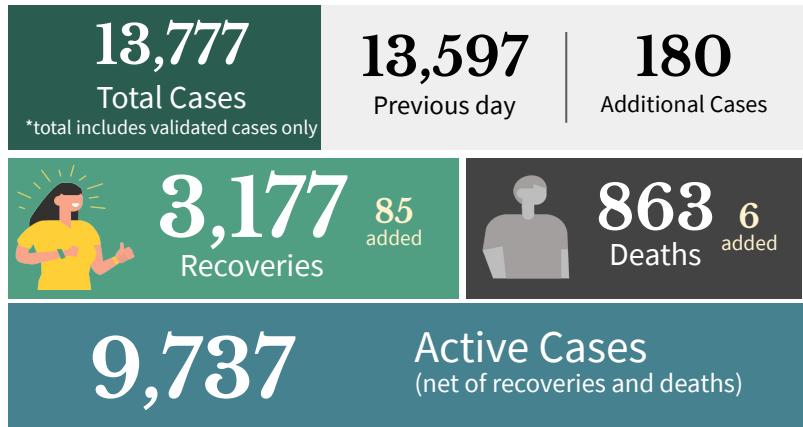
Issue 27 | May 24, 2020

Highlights and Recent Updates on COVID-19

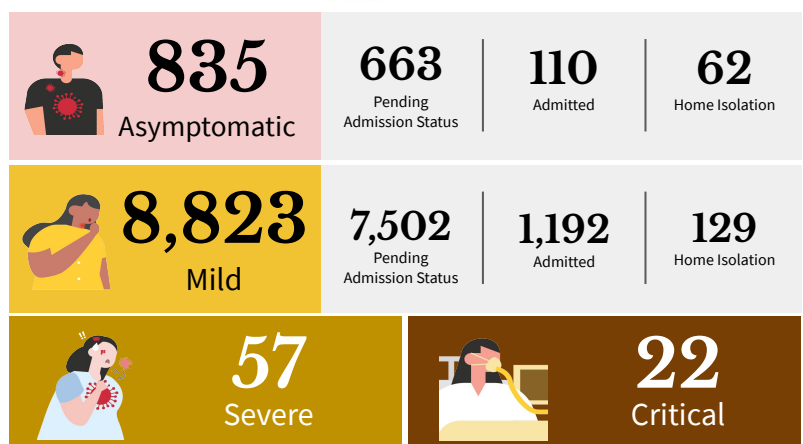
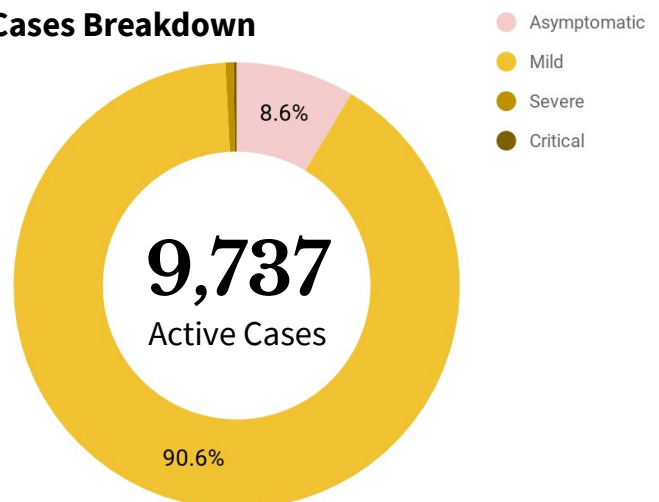
- DOH recorded **9,737 active cases** as of May 23, with majority of the patients exhibiting **mild symptoms** (8,823; 90.6%).
- Thirty-four (34) licensed laboratories** are now equipped to perform the **RT-PCR test** for COVID-19 while **eight (8) laboratories** are licensed to perform COVID-19 testing using **GeneXpert cartridges**.
- Twenty-seven (27) provinces** across the country recorded **no new COVID-19 cases in the past two weeks**.
- Based on data gathered from *DOHDataCollectApp*, overall capacity to manage and admit COVID-19 patients is still adequate with **more than 50% beds and mechanical ventilators in ICU, isolation, and COVID wards available**.
- A total of **2,369 (17% of all cases) healthcare workers** have been affected by COVID-19, with **1,118 recoveries** and 31 deaths.
- As reported by DFA, there are a total of **2,522 confirmed cases of Overseas Filipinos** with the highest count being in America (560 cases).
- DOH enjoins the public to **appreciate and applaud frontline healthcare workers** (HCWs) amidst cases of discrimination against them. HCWs render crucial and unwavering service in the face of the pandemic and therefore need the public's support.
- DOH reiterates the need for the public to **adapt in the New Normal setting** to ensure health and safety. DOH urges everyone to **remain vigilant about their health** and practice handwashing, physical distancing, wearing of face masks, and cough etiquette as part of their lifestyle.

Case Summary

As of May 23, 2020



Active Cases Breakdown



Probable Cases

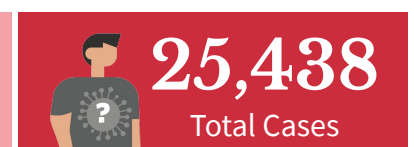
As of May 23, 2020



SEVERE: Pneumonia, Difficulty of Breathing

CRITICAL: Intubated

Suspect Cases



PROBABLE: Previously termed as PUIs (mild or critical) with inconclusive or unofficial test results.

SUSPECT CASES: Previously termed as PUIs (mild or critical) with no test done or awaiting test results.

Goal: Shortening Duration of Infectiousness

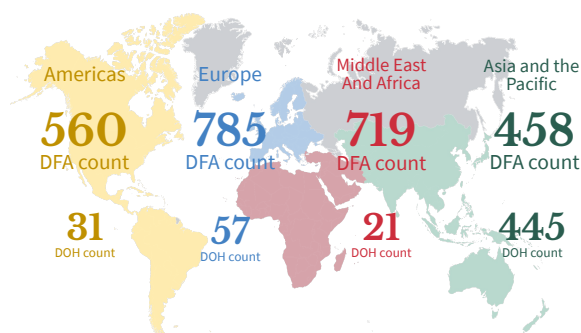
Case Summary of Overseas Filipinos (OFs)

As of May 23, 2020



DOH Counts validated through the International Health Regulation (IHR), 24 cases for validation of disposition

REGIONAL DISTRIBUTION



TOP COUNTRIES WITH COVID-19

WHO data as of May 23, 2020

Top 3 countries with the highest number of cases

	USA	1,547,973
--	------------	-----------

	RUSSIA	335,882
--	---------------	---------

	BRAZIL	310,087
--	---------------	---------

Asian country with the highest number of confirmed cases outside China

	IRAN	131,652
--	-------------	---------

Southeast Asian country with the highest number of confirmed cases

	SINGAPORE	30,426
--	------------------	--------

Healthcare Workers affected by COVID-19

As of May 23, 2020

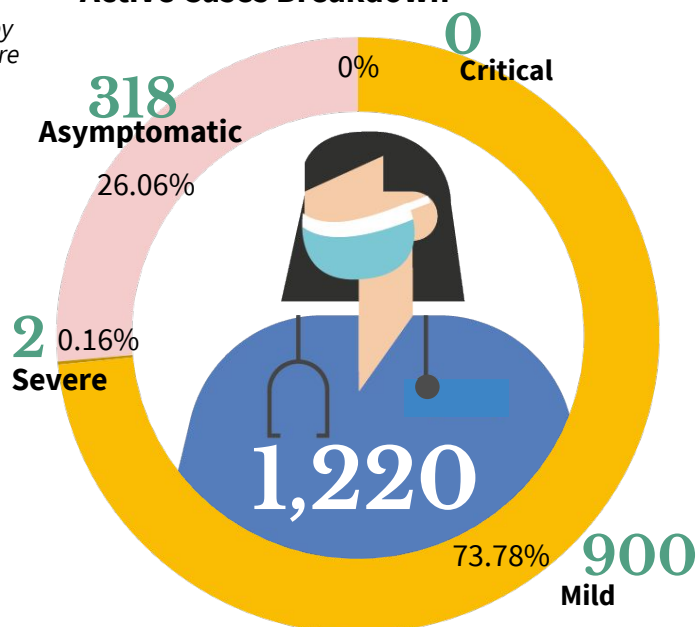
Note: There were inconsistencies on previously reported decedent by profession. Correct professions upon validation of HCWs who died are reflected in this report.



Top 5 Medical Profession/Cadre With COVID-19 cases

Top 5 Medical Profession/Cadre With COVID-19 cases	Total Number	Deaths
Nurse	866	4
Physician	676	25
Nursing Assistant	143	0
Medical Technologist	88	0
Radiologic Technologist	43	0
Non-medical Staff	294	2

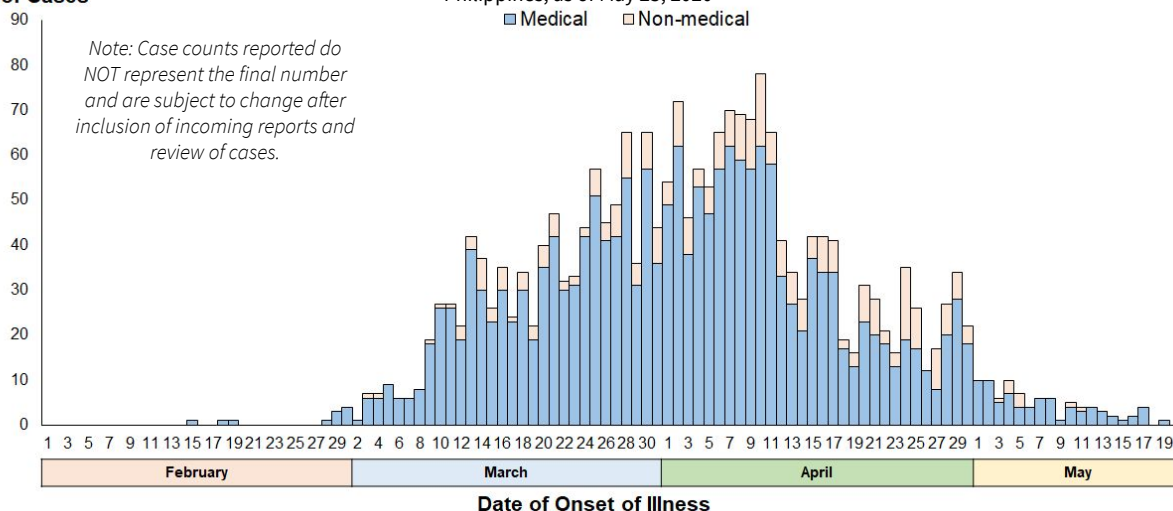
Active Cases Breakdown



Healthcare Workers with confirmed COVID-19 by Date of Onset of Illness (N= 2,369)

No. of Cases

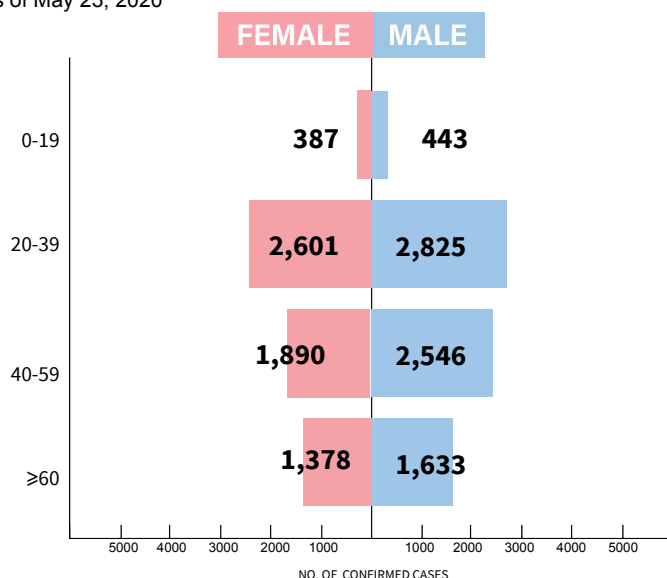
Philippines, as of May 23, 2020

■ Medical ■ Non-medical


Goal: Shortening Duration of Infectiousness

Age and Sex Distribution of confirmed cases

As of May 23, 2020



Most of the confirmed cases are Male (7397 or 54%). Most cases are within the 20-39 age group. Seventy-four cases (28-female; 46-male) with unspecified age are included in the total.



Average hospital length of stay for recovered patients is at **17 days**.



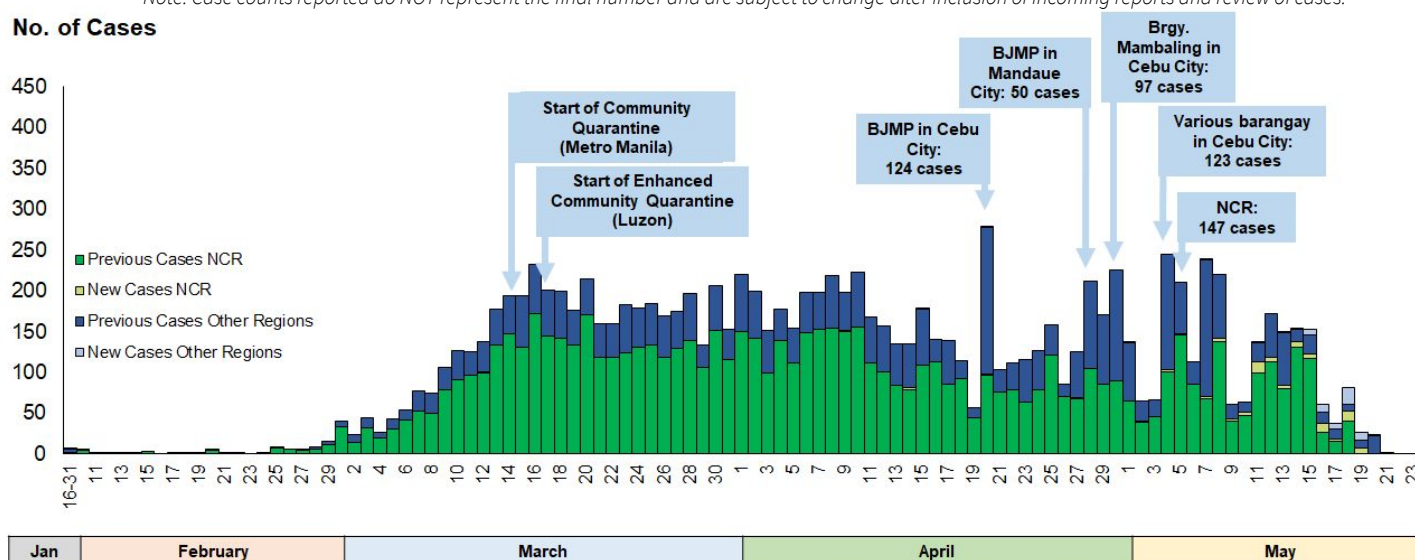
A total of 453 (53%) deaths had known comorbidities: top 2 comorbidities are hypertension (281 or 62%) and diabetes (212 or 47%).

Confirmed COVID-19 Cases by Date of Onset of Illness (N = 13,777)

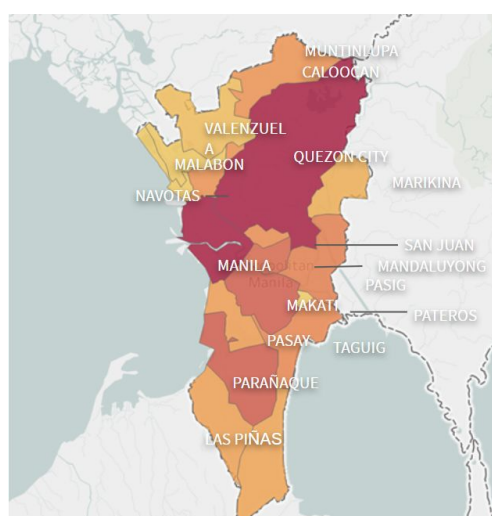
Philippines, as of May 23, 2020

Note: Case counts reported do NOT represent the final number and are subject to change after inclusion of incoming reports and review of cases.

No. of Cases



Date of Onset of Illness



A total of 8,868 (64%) are confirmed cases from NCR. The proportion of cases in NCR decreased from 72% since January (start of case detection) to April 19, 2020 to 59% for the period of April 20 to May 23, 2020. However, on May 5, 2020, 147 cases were reported in NCR—highest since April 11.

Meanwhile, cases in Region 7 increased in proportion from 2% to 22% for the similar period. On May 4, 2020, 123 (51%) out of the 245 confirmed cases nationwide (by date of onset), were reported from various barangay in Cebu City. Region 7 recorded a total of 1,949 (14%) confirmed cases, the second highest reported in the country.

Region 4-A has the third highest cases with a total of 1,462 (11%) confirmed cases of yesterday. Since start of case detection, the proportion of cases in Region 4A decreased from 15% to 6% for the period of April 20 to May 23.

INDIVIDUALS TESTED AS REPORTED BY COVID-19 LABORATORIES

As of May 23, 2020

Note: The results of reported laboratory positive individuals are undergoing case information, validation, and processing and may not be reflected on the official case summary of the day.

FACILITY NAME	DAILY OUTPUT (MAY 23)				CUMULATIVE				
	UNIQUE POSITIVE INDIVIDUALS	UNIQUE NEGATIVE INDIVIDUALS	UNIQUE INDIVIDUALS TESTED	SAMPLE TESTED (with results)	UNIQUE POSITIVE INDIVIDUALS	UNIQUE NEGATIVE INDIVIDUALS	UNIQUE INDIVIDUALS TESTED	SAMPLES TESTED	Remaining Available Tests
RT-PCR laboratories									
Allegiant Regional Care Hospital	No submission as of 3 pm			0	37	123	160	160	580
Asian Hospital and Medical Center	No submission as of 3 pm			0	11	190	201	206	6,000
Baguio General Hospital and Medical Center	0	304	304	330	84	12,118	12,202	13,808	16,754
Bicol Regional Diagnostic and Reference Laboratory (BRDRL)	0	0	0	0	53	1,461	1,514	1,543	3,717
Cebu TB Reference Laboratory - Molecular Facility for COVID-19 Testing	51	205	256	256	209	1,979	2,188	2,217	7,897
Chinese General Hospital	57	365	422	422	796	6,261	7,057	7,075	1,496
De La Salle University - Cavite	1	119	120	120	22	1,389	1,411	1,414	8,740
Detoxicare Molecular Diagnostics Laboratory	58	932	990	995	597	10,507	11,104	11,134	0
Divine Word Hospital	0	0	0	0	0	204	204	259	1,798
Eastern Visayas Regional Covid Testing Center	No submission as of 3 pm			0	6	661	667	671	3,400
Jose B. Lingad Memorial Regional Hospital	0	0	0	0	17	1,503	1,520	1,562	43,361
Lung Center of the Philippines (LCP)	0	91	91	91	722	14,628	15,350	15,395	4,000
Makati Medical Center (MMC)	14	148	162	169	225	3,504	3,729	4,031	1,428
Marikina Molecular Diagnostics Laboratory (MMDL)	No submission as of 3 pm			0	64	1,202	1,266	1,338	40
Philippine Red Cross (PRC)	21	588	609	715	1,471	35,932	37,403	37,523	50,000
Philippine Red Cross Logistics & Multipurpose Center	51	638	689	720	839	30,727	31,566	31,696	50,000
Research Institute for Tropical Medicine (RITM)	50	1,551	1,601	1,722	7,969	61,677	69,646	80,712	623,368
San Lazaro Hospital (SLH)	7	124	131	228	418	9,242	9,660	10,975	660
Singapore Diagnostics	11	162	173	173	193	1,592	1,785	1,900	6,850
Southern Philippines Medical Center (SPMC)	2	119	121	178	296	6,996	7,292	8,917	15,981
St. Luke's Medical Center - BGC (SLMC-BGC)	28	237	265	451	846	8,414	9,260	11,495	22,520
St. Luke's Medical Center - Quezon City (SLMC-QC)	19	113	132	373	1,024	4,013	5,037	6,351	7,836
The Medical City (TMC)	5	123	128	148	581	3,176	3,757	3,836	1,098
UP National Institutes of Health (UP-NIH)	31	127	158	174	1,294	7,212	8,506	9,219	6,466
UP-PGH Molecular Laboratory	28	186	214	222	97	837	934	1,003	962
UP Philippine Genome Center	50	276	326	327	295	1,409	1,704	1,874	8,700
Vicente Sotto Memorial Medical Center (VSMC)	0	96	96	172	2,186	12,479	14,665	15,682	12,688
Victoriano Luna - AFRIMS	0	29	29	29	12	1,498	1,510	1,545	8,071
Western Visayas Medical Center (WVMC)	0	203	203	204	107	8,908	9,015	9,974	11,592
ZCMC-DA Satellite Laboratory	4	8	12	12	8	213	221	239	1,944
GenXpert Laboratories									
Cotabato Regional Medical Center	0	35	35	36	2	69	71	72	1,068
Lung Center of the Philippines GeneXpert Laboratory	0	0	0	0	151	801	952	963	1,917
Northern Mindanao Medical Center	0	8	8	8	1	35	36	36	1,705
Osipal ng Palawan	0	1	1	1	1	3	3	3	594
Zamboanga City Medical Center GeneXpert Laboratory	0	7	7	7	119	640	759	765	330
TOTAL	488	6,795	7,283	8,283	20,752	251,603	272,355	295,593	943,561

CUMULATIVE DATA AS OF MAY 23, 2020

Disclaimer: Unique individuals should still be taken as approximate, since there is still the possibility that the same individual could have been counted twice if they took more than one test on different days or even across different labs

20,752 (7.6%)

Total Positive Individuals

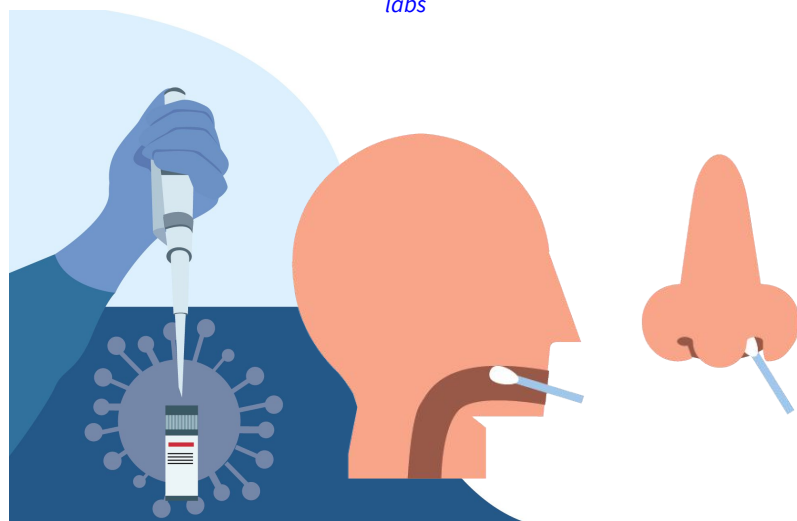
*total includes both validated and unvalidated cases

272,255

Total Unique Individuals Tested

295,593

Total Tests Conducted



FACILITY NAME	REGION	STAGE
Research Institute for Tropical Medicine	NCR	V
San Lazaro Hospital		
UP National Institutes of Health		
Lung Center of the Philippines		
St. Luke's Medical Center- QC		
The Medical City - Ortigas		
Victoriano Luna - AFRIMS		
Detoxicare Molecular Diagnostics Laboratory		
St. Luke's Medical Center - BGC		
Makati Medical Center		
Philippine Red Cross		
Chinese Gen. Hospital		
PRC-PLMC		
Philippine Genome Center UP-Diliman		
Marikina Molecular Diagnostic Laboratory		
UP-PGH Molecular Laboratory		
Singapore Diagnostic, Inc.		
Asian Hospital & Medical Center		
PNP Crime Laboratory		
National Kidney and Transplant Institute		
Baguio General Hospital and Medical Center	CAR	
Ilocos Training Regional Medical Center	I	
J B. Lingad Memorial Hospital	III	
De La Salle University - Cavite	IV-A	
Lucena United Doctors Hospital and Medical Center		
Bicol Regional Diagnostic and Reference Laboratory	V	
Western Visayas Medical Center	VI	
Allegiant Regional Care Hospital	VII	
Vicente Sotto Memorial Medical Center		
Cebu TB Reference Laboratory		
Eastern Visayas Regional Medical Center	VIII	
Divine Word Hospital		
Zamboanga City Medical Center - DA Satellite Lab	IX	
Southern Philippines Medical Center	XI	
PRC-Port Area	NCR	IV
Hi-Precision (QC)		
ABC Clinical Laboratory	NCR	III
Safeguard DNA Diagnostics		
Tropical Disease Foundation		
Fe del Mundo Medical Center		
Philippine Children’s Medical Center		
Mariano Marcos Memorial Hospital	I	
Cagayan Valley Medical Center	II	
Southern Isabela Medical Center		
The Medical City - Clark	III	
Bataan General Hospital		
Green City Medical Center		
Batangas Medical Center	IV-A	
San Pablo College Medical Center		
Laguna Provincial Hospital - San Pablo City District Hospital		
Calamba Medical Center		
Bacolod Queen of Mercy Hospital	VI	
Teresita Jalandoni Provincial Hospital		
Western Visayas State University Medical Center		
Governor Celestino Gallares Memorial Medical Center (Bohol)	VII	
Northern Mindanao TB Regional Center	X	
TB Reference Center- CHD Region X		
Northern Mindanao Medical Center		
Polymedic Medical Plaza		
Davao One World Diagnostic Center Incorporated	XI	
Cotabato Regional Medical Center	BARMM	
Adela Serra TY Memorial Medical Center	CARAGA	
CARAGA Regional Hospital		

FACILITY NAME (RT-PCR using Gene Xpert)	REGION	STAGE
Zamboanga City Medical Center	IX	V
Cagayan Valley CHD TB Reference Laboratory	II	
Dr. Jose B. Rodriguez Memorial Hospital and Sanitarium (TALA)	NCR	
Lung Center of the Philippines		
Tondo Medical Center		
Northern Mindanao Medical Center	X	
Ospital ng Palawan	IV-B	
Cotabato Regional Medical Center	XII	
Bataan General Hospital	III	IV
Regional 1 Medical Center	I	III
Mariano Marcos Memorial Hospital		
Ilocos Training Regional Medical Center		
Cagayan Valley Medical Center	II	
Central Luzon Doctor's Hospital	III	
President Ramon Magsaysay Provincial Hospital		
Philippine Tuberculosis Society, Inc.- Quezon Institute		
San Lazaro Hospital	NCR	
Tropical Disease Foundation		
Philippine Heart Center		
Amang Rodriguez Memorial Center		
Jose R. Reyes Memorial Medical Center		
Las Pinas General Hospital		
Bicol Medical Center		
Western Visayas Medical Center (WVMC)	VI	
Rakkk Prophet Medical Center Inc.	IV-A	
Butuan Medical Center	CARAGA	
Davao Doctors' Hospital	XI	
Davao Regional Medical Center		
Davao TB Reference Laboratory		
Dr. Arturo Pingov Medical Center	XII	

STATUS OF LABORATORY LICENSING

As of May 23, 2020

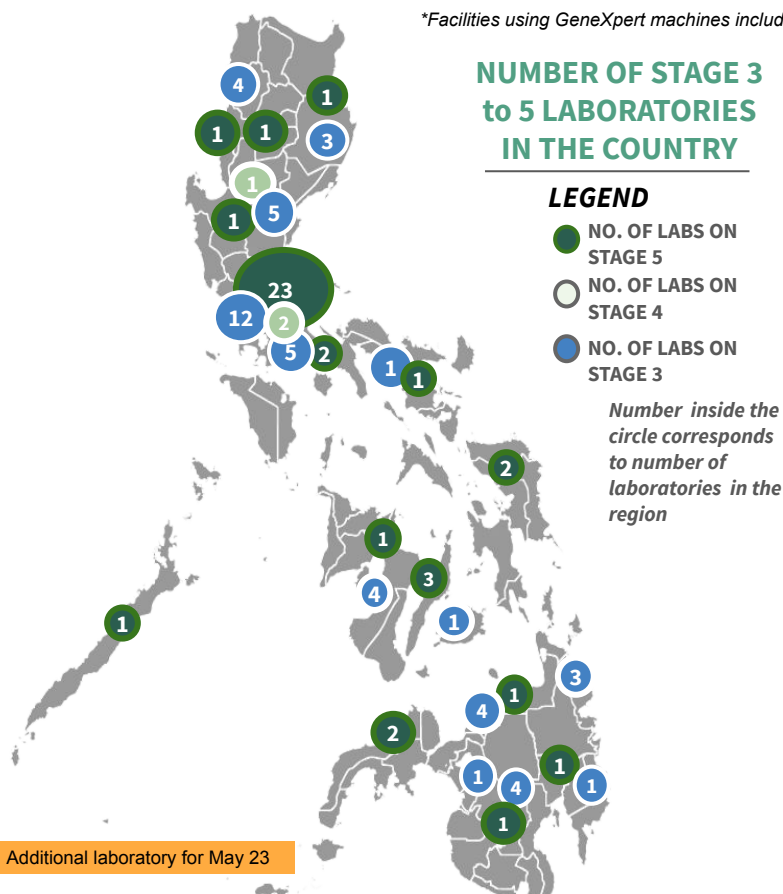
*Facilities with GeneXpert machines included.

LICENSING OF LABORATORIES STATUS



*Facilities using GeneXpert machines included.

NUMBER OF STAGE 3 to 5 LABORATORIES IN THE COUNTRY



Additional laboratory for May 23

Goal: Increase Resilience, Stop Transmission, Reduce Contact

BEHAVIORAL MESSAGES OF THE DAY

As of May 23, 2020

- As the country ushers into the New Normal era, minimum health standards are essential to keep everyone healthy and safe. The best way to minimize the exposure from COVID-19 is [staying at home](#). People at home should be physically healthy by eating nutritious food, exercise at least 15 minutes daily, get enough sleep and avoid smoking. Constant communication with friends and family members will lessen boredom and mental stress from the current quarantine measures. Repatriates staying at quarantine facilities are encouraged to do the same.
- Stay healthy when running essential errands to places like grocery stores or market, face masks should be worn at all times (reusable cloth masks should be cleaned regularly) and maintain a distance of at least 1 meter to others. Wash your hands with soap and water or use alcohol-based sanitizers before and after going to the groceries or market are also a must.
- [Eid al-Fitr](#), a three-day holiday marking the end of the month-long fast for Ramadan, through home prayers instead of communal prayers at mosques is highly encourage now at the time of COVID-19 outbreak. Muslim families are encouraged to celebrate in their houses and avoid mass gatherings. Prepare healthy foods to boost immune system and always observe proper cough manners and hand hygiene at all times are also recommended..
- The government does not condone discrimination of healthcare workers as they wear Personal Protective Equipment (PPE) when providing care and services to people with COVID-19. Don't discriminate. Support and trust our health workers!

MINIMUM HEALTH STANDARDS: FAQs - HOME



Q: Paano mapapanatili ng mga taong nasa bahay ang kanilang physical at mental health?

A: Subukang umiwas sa pag-inom ng alak. Huwag manigarilyo.



Regular na makipag-usap sa mga kaibigan sa pamamagitan ng tawag o video chat sa social media.



f OfficialDOHgovph @DOHgovph doh.gov.ph (02) 894-COVID / 1555



HOW DO YOU REMAIN SAFE AND HEALTHY AMIDST THE COVID-19 PANDEMIC?

ALWAYS remember and practice the following:



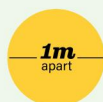
Wash hands with soap and water for 20 seconds or more (Try singing the chorus of your favorite song while washing).



Use a hand sanitizer with 70% alcohol if you can't wash your hands for 20 seconds or more.



Avoid touching your face, especially your mouth, eyes, nose.



Make sure you keep 1 meter distance from other people.



Avoid touching things that many people touch like door handles, tables, chairs, etc.



Wear a mask while outside.



Frequently clean surfaces in your house, work or business. This includes tables, doorknobs, light switches, countertops, handles, desks, phones, keys, keyboards, toilets, faucets, and sinks.



Disinfect using a bleach solution (7 tablespoons [100 mL] bleach for 1 liter of clean water).



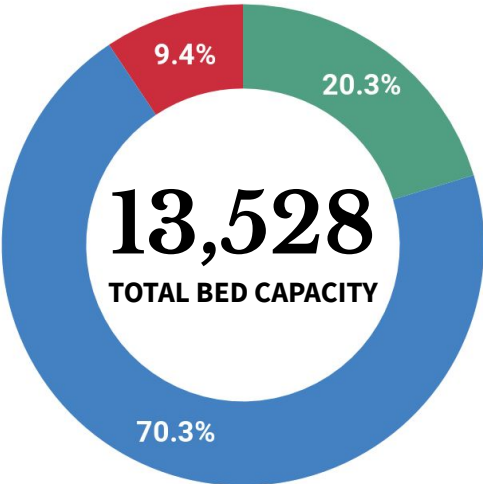
Disinfect your most used things (like phone, keys, eyeglasses, keyboard, etc.) with 70% alcohol solution.

Goal: Enhance quality, consistency, and affordability of care provision

HOSPITAL BEDS AND MECHANICAL VENTILATORS DEDICATED TO COVID-19 CASES

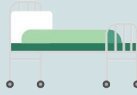
Data taken from the DOH DataCollect App. Specific for COVID-19 cases.

As of May 23, 2020



935
Ward beds occupied

1,813
available



Ward beds for confirmed COVID-19 cases



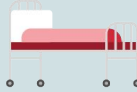
3501
Isolation beds occupied

6,011
available



457
ICU beds occupied

811
available



361
Mech vents in use

1,564
available



DEDICATED BEDS FOR COVID-19 CASES IN TTMFs

As of May 23, 2020

Local Isolation and General Treatment Areas for COVID-19 cases (LIGTAS COVID centers) are community-managed facilities dedicated to quarantine or isolation of suspected COVID-19 cases.

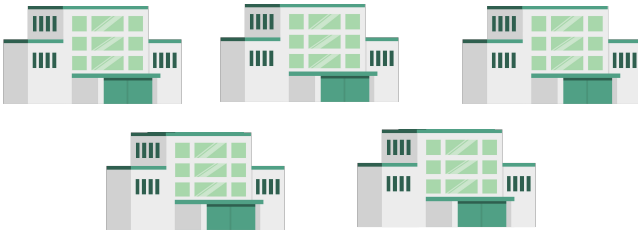


44,378
BEDS IN LIGTAS COVID FACILITIES

MEGA LIGTAS AND LIGTAS COVID-19 FACILITIES

As of May 23, 2020

Mega LIGTAS COVID-19 Facilities are facilities dedicated for quarantine and isolation which are managed by the National Government



5 MEGA LIGTAS COVID FACILITIES

REGION	TTMF	Beds
NCR	PICC	294
NCR	World Trade Center	502
NCR	Rizal Memorial Coliseum	132
NCR	Ninoy Aquino Stadium	120
REG III	Philippine Arena	300
TOTAL		1,348

NCR	1,266	REG VII	7,805
CAR	319	REG VIII	787
REG I	7958	REG IX	1,255
REG II	1,377	REG X	2,524
REG III	1,315	REG XI	2,996
REG IV-A	3,423	REG XII	1,345
REG IV-B	791	REG XIII	789
REG V	6,932	BARMM	414
REG VI	3,082	TOTAL	44,378

PERSONAL PROTECTIVE EQUIPMENT AND OTHER HEALTH EQUIPMENT DISTRIBUTED

May 23, 2020

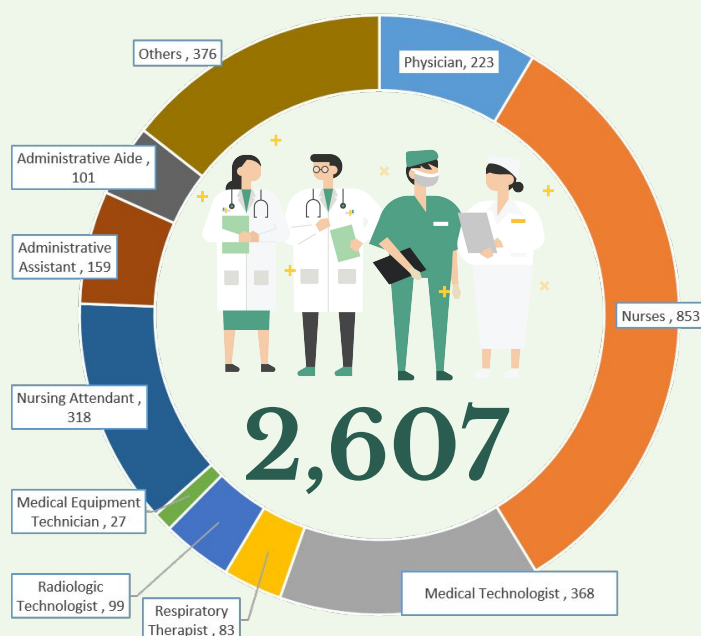


HUMAN RESOURCES FOR HEALTH (HRH) AUGMENTATION

As of May 23, 2020

HIRED HEALTH WORKERS PER PRIORITY FACILITY

Facility	No.
COVID Referral Hospital	294
National TTMF	379
DOH designated Facility	360
Quarantine Facility (BOQ)	106
DOH Hospital	1,383
Private Diagnostic Facility	10



202
Number of facility requests received

6,802
Number of HRH slots approved for hiring

P263M
Total amount sub-allotted/transferred

TREATMENT

For case management of COVID-19 patients, healthcare providers are advised to adhere to the existing [PSMID Guidelines](#).

FOOD AND DRUG ADMINISTRATION (FDA)

Department of Health FDA has issued Administrative Order No. 0010 “Regulations on the Conduct of Clinical Trials for Investigational Products” to ensure the full protection of the rights and safety of human subjects and the integrity of clinical trial data through the adoption and implementation of International Council of Harmonization-Good Clinical Practice (ICH GCP) standards; ensure efficient and effective process for the approval of clinical trials; provide standards and requirements for the regulation and importation of Investigational Products; and strengthen the monitoring of compliance of all organizations, institutions and entities to GCP and other related FDA regulations through regulatory inspections.

Read more [here](#).

PHILHEALTH FOR ALL

The Philippine Health Insurance Corporation has released P13.3 B to 574 facilities nationwide as of May 21, 2020 as financial assistance in the fight against CoViD-19.

You can also reach PhilHealth through the following:

FB: [@PhilHealthofficial](#)

Twitter: [@teamphilhealth](#)

Youtube: [@teamphilhealth](#)

Action Center: 8441-7442

Email: actioncenter@philhealth.gov.ph

SMS: 0917-8987442

POLICY IN-FOCUS

In order to provide guidance for the reintegration of close contacts and suspect, probable, and confirmed cases of COVID-19 back to their communities, the Department of Health has issued Department Memorandum No. 2020-0198¹ “Interim Guidelines on Reintegration into the Community of Close Contacts, Suspect, and Probable and Confirmed COVID-19 Cases.”

For the purposes of these guidelines, reintegration into the community refers to the process of transitioning from being a close contact, suspect, probable or confirmed COVID-19 case to being a recovered case and being eligible to resume community functions, such as returning to work, returning to public places and socializing with community members, while observing enhanced or general community quarantine procedures, if being implemented in the area.

Check the FAQs [here](#).

ERRATA FOR ISSUE #026:

Age-Sex Distribution Graph: X-axis has already been corrected to represent the highest number in the graph.

The correct number for suspect cases is 25,542 as reported by Epidemiology Bureau, not 25,254.

The total numbers for confirmed cases for >60 years old are 1,369 for females and 1,618 for males not 6,200 for females and 7,397 for males.

These figures represent the total of confirmed cases for females and males respectively.

One of the disclaimers on page 5 was removed.



Contact Details

For further information, you may reach us through the following platforms:

SOCIAL MEDIA ACCOUNTS

- f Facebook:**
fb.com/OfficialDOHgov
- Twitter:**
[@DOHgovph](#)
- Viber:**
DOH PH COVID-19
- TikTok:**
[@dohgovph](#)

WEBSITES

- DOH:**
www.doh.gov.ph
- Healthy Pilipinas:**
healthypilipinas.ph

CONTACT NUMBERS

- (02) 894 - COVID (26843) or 1555 (for all subscribers)**
- Telemedicine hotlines (NCR):**
TeleMed: (02) 8424 1724
KonsultaMD (02) 7798 8000

Resources

1. DM No. 2020-0198 - Interim Guidelines on Reintegration into the Community of Close Contacts, Suspect, Probable, and Confirmed COVID-19 Cases.
<https://drive.google.com/file/d/1NEKuYqLqEeDaHKTGz7Job7rq5tTUIjZxr/view>

THANK YOU for checking out the 27th issue of Beat COVID-19 Today! We'd like to know what you think. Send us your feedback at dohfeedback@gmail.com