

Beat COVID-19 Today

A COVID-19 Philippine Situationer



Issue 22 | May 19, 2020

Highlights and Recent Updates on COVID-19

- DOH recorded **9,158 active cases** as of May 18, with majority of the patients exhibiting **mild symptoms** (8,186; 89.4%).
- There are now **31 licensed laboratories** performing RT-PCR test while there are **six (6) licensed laboratories** using **GeneXpert cartridges** for COVID-19 testing.
- A total of 2,315 (19% of all cases) healthcare workers have been affected by COVID-19, with 974 recoveries and 35 deaths.
- DOH has approved a total of 6,225 slots for hiring in 135 health facilities. A total of 2,406 health workers have been hired in 168 hospitals and quarantine facilities (COVID referral hospitals, DOH designated diagnostic facility, DOH hospitals, LGU hospitals, private diagnostic facility, airport units).
- As of May 18, a total of 408 repatriate vessels have been processed. Of these, 56 vessels arrived with a total of 14,333 repatriates under quarantine directly supervised by BOQ for monitoring and PNP for security; while 352 vessels with 19,240 repatriates are under quarantine directly supervised by OWWA for monitoring and PCG for security. At present, 68 vessels are being processed.
- DOH reiterates to the public the importance of embracing the New Normal in their everyday lives. Following the minimum health standards in hotels and inns is essential to keep everyone healthy and safe. Everyone is further advised to maintain a healthy diet and to exercise regularly. Wearing of face masks at all times and frequent washing of hands using soap and water for at least 20 seconds should be practiced.

Case Summary

As of May 18, 2020

12,718

Total Cases

12,513

Previous day

205

Additional Cases



2,729

Recoveries

94
added



831

Deaths

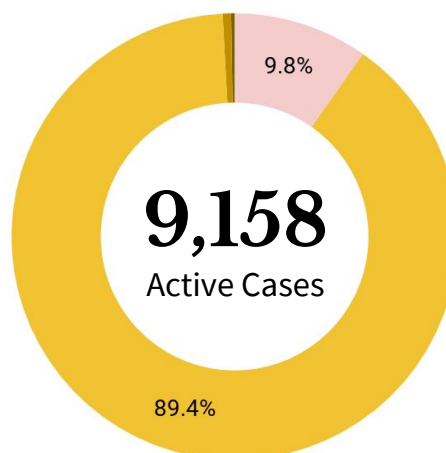
7
added

9,158

Active Cases

(net of recoveries and deaths)

Active Cases Breakdown



- Asymptomatic
- Mild
- Severe
- Critical



893

Asymptomatic

710

Pending
Admission Status

108

Admitted

75

Home Isolation



8,186

Mild

6,828

Pending
Admission Status

1,184

Admitted

174

Home Isolation



56

Severe



23

Critical

Probable Cases

As of May 18, 2020



801

Total Cases

SEVERE: Pneumonia,
Difficulty of Breathing

CRITICAL: Intubated

Suspect Cases



24,332

Total Cases

PROBABLE: Previously
termed as PUIs (mild or
critical) with inconclusive
or unofficial test results.

SUSPECT CASES:
Previously termed as PUIs
(mild or critical) with no test
done or awaiting test results.

Goal: Shortening Duration of Infectiousness

Case Summary of Overseas Filipinos (OFs)

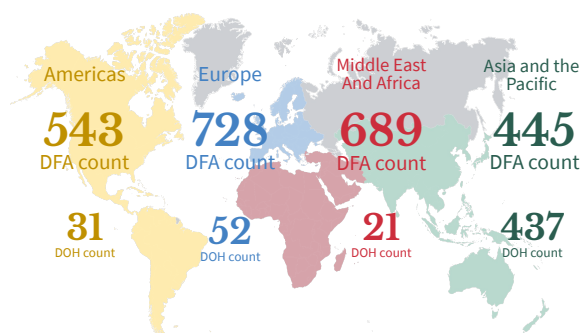
As of May 18, 2020

2,405
Confirmed OFs
DFA Count

541
Confirmed OFs
DOH Count

DOH Counts validated through the International Health Regulation (IHR), 24 cases for validation of disposition

REGIONAL DISTRIBUTION



TOP COUNTRIES WITH COVID-19

WHO data as of May 18, 2020

Top 3 countries with the highest cases

	USA	1,432,265
	RUSSIA	290,678
	UK	243,699

Asian country with the highest case outside China

	IRAN	122,492
--	-------------	---------

Southeast Asian country with the highest case

	SINGAPORE	28,038
--	------------------	--------

Healthcare Workers affected by COVID-19

As of May 18, 2020

2,315
healthcare workers
Or 1/5 are HCWs (19%)

1,306
Active

974
Recoveries

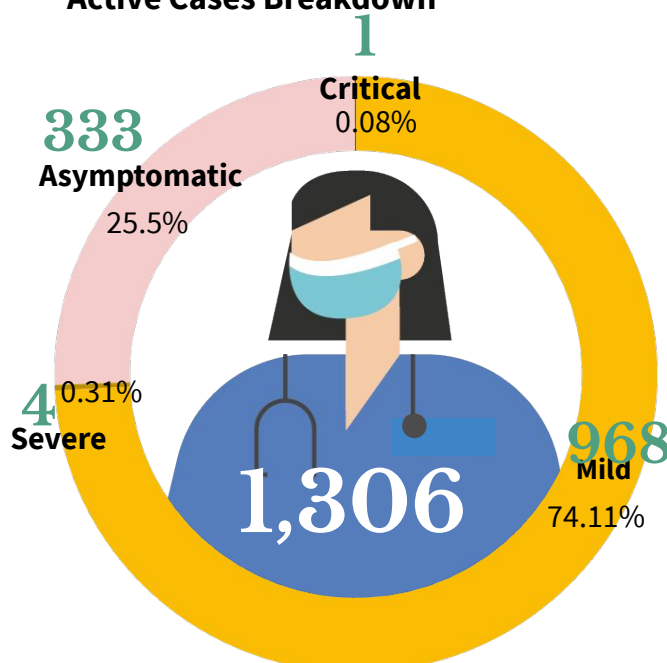
35
Deaths

Top 5 Medical Profession/Cadre With COVID-19 cases

Total Number

Nurse	842
Physician	671
Nursing Assistant	144
Medical Technologist	84
Radiologic Technologist	42
Non-medical Staff	284

Active Cases Breakdown

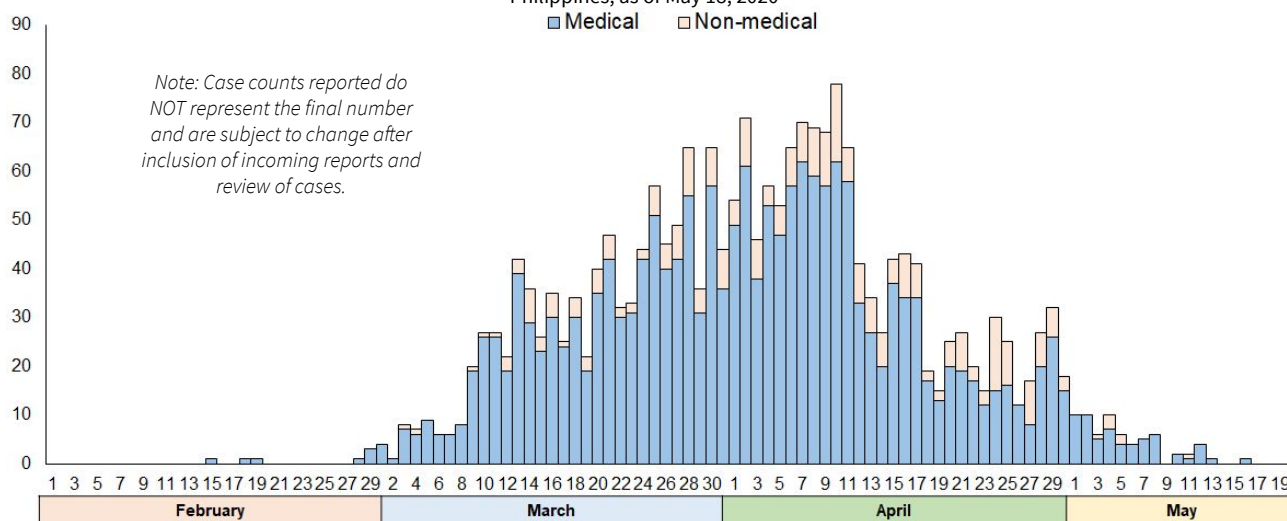


Healthcare Workers with confirmed COVID-19 by Date of Onset of Illness (N= 2,315)

No. of Cases

Philippines, as of May 18, 2020

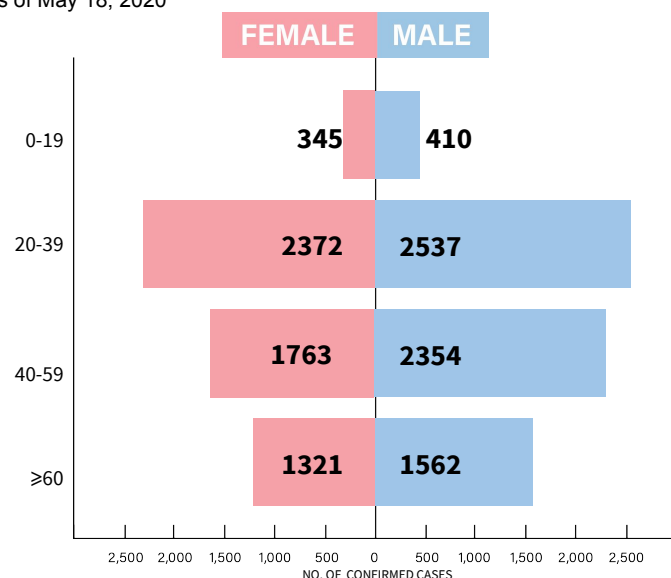
■ Medical ■ Non-medical



Goal: Shortening Duration of Infectiousness

Age and Sex Distribution of confirmed cases

As of May 18, 2020



Most of the confirmed cases are **male** (6897; 54%) and within the **20-39 age group**. (15 cases with unspecified age included in the total)



Average hospital length of stay for recovered patients is at **15 days**.

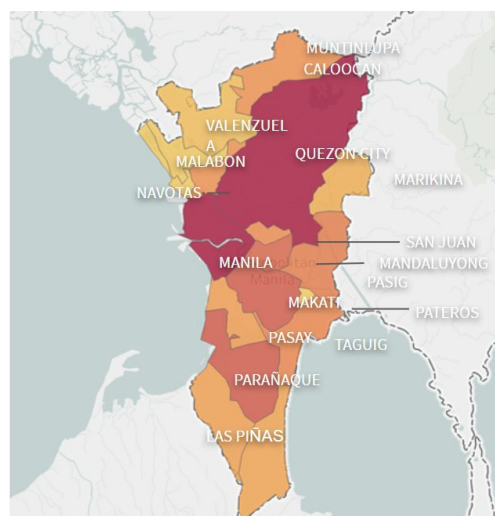
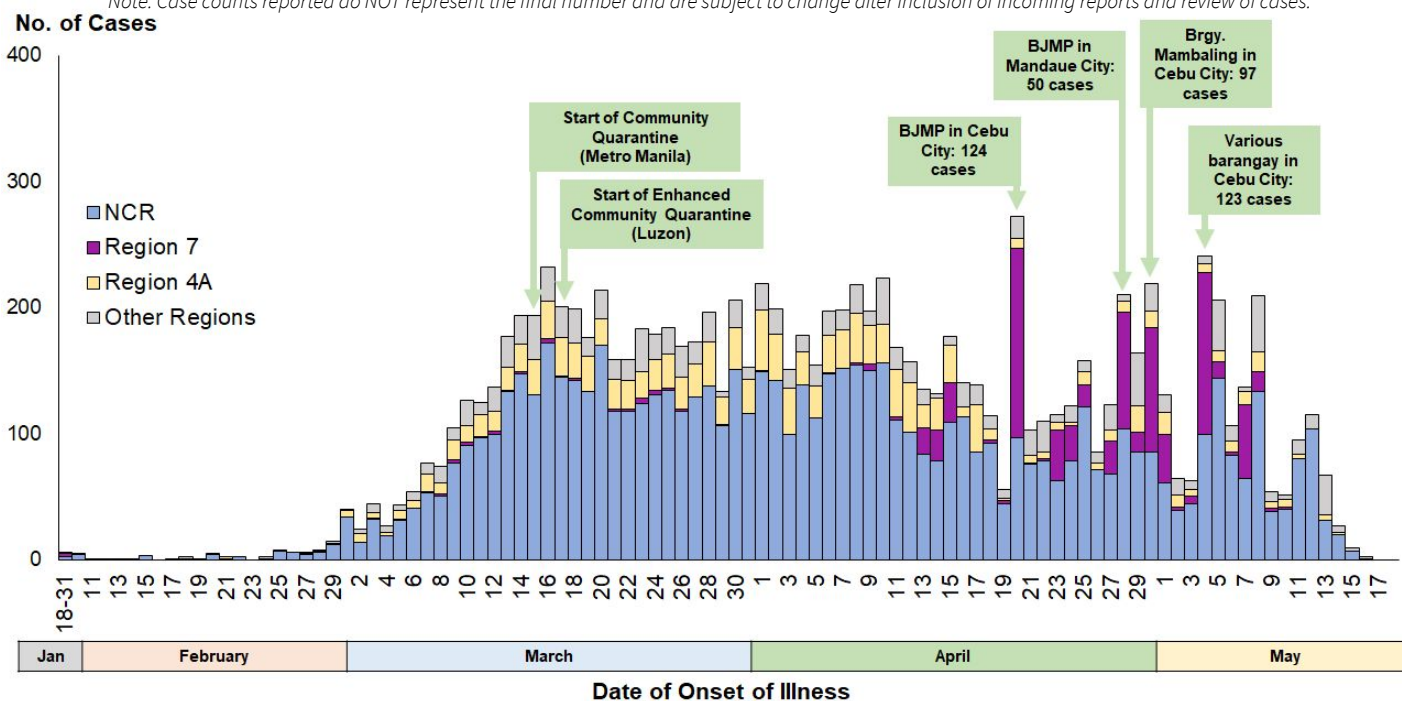


A total of 447 (54%) deaths had known comorbidities: top 2 comorbidities are hypertension (278 or 62%) and diabetes (210 or 47%).

Confirmed COVID-19 Cases by Date of Onset of Illness (N = 12,718)

Philippines, as of May 18, 2020

Note: Case counts reported do NOT represent the final number and are subject to change after inclusion of incoming reports and review of cases.



A total of 8,245 (65%) are confirmed cases from NCR. The proportion of cases in NCR decreased from 72% since January (start of case detection) to April 19, 2020 to 59% for the period of April 20 to May 18, 2020.

Meanwhile, cases in Region 7 increased in proportion from 2% to 34%. Meanwhile, cases in Region 7 increased in proportion from 2% to 23% for the similar period. On May 4, 2020, 123 (51%) out of the 240 confirmed cases nationwide (by date of onset), were reported from various barangay in Cebu City. Region 7 recorded a total of 1,756 (14%) confirmed cases, the second highest reported in the country.

Region 4-A has the third highest cases with a total of 1,406 (11%) confirmed cases of yesterday. Since start of case detection, the proportion of cases in Region 4A decreased from 15% to 6% for the period of April 20 to May 17.

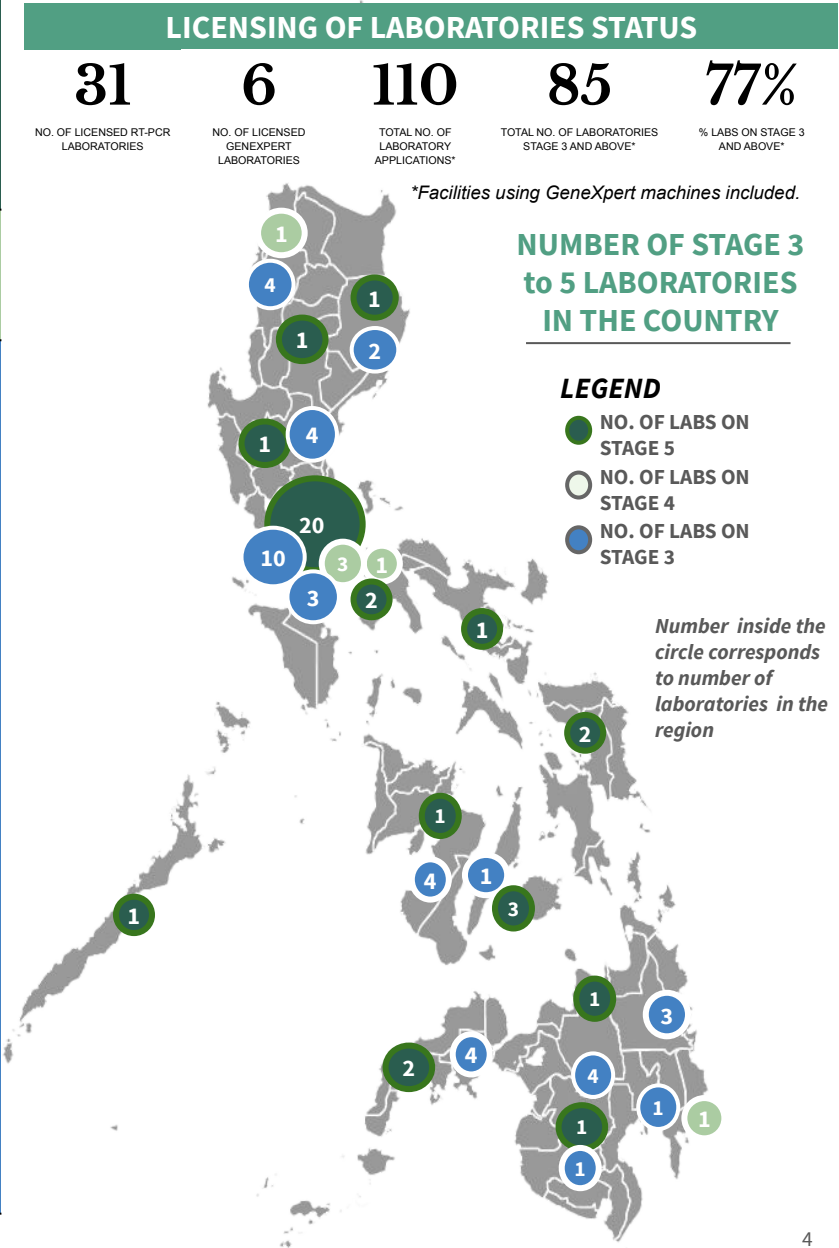
FACILITY NAME	REGION	STAGE	
Research Institute for Tropical Medicine	NCR	V	
San Lazaro Hospital			
UP National Institutes of Health			
Lung Center of the Philippines			
St. Luke's Medical Center- QC			
The Medical City - Ortigas			
Victoriano Luna - AFRIMS			
Detoxicare Molecular Diagnostics Laboratory			
St. Luke's Medical Center - BGC			
Makati Medical Center			
Philippine Red Cross			
Chinese Gen. Hospital			
PRC-PLMC			
Philippine Genome Center UP-Diliman			
Marikina Molecular Diagnostic Laboratory			
UP-PGH Molecular Laboratory			
Singapore Diagnostic, Inc.			
Asian Hospital & Medical Center			
Baguio General Hospital and Medical Center			CAR
J B. Lingad Memorial Hospital			III
De La Salle University - Cavite	IV-A		
Lucena United Doctors Hospital and Medical Center			
Bicol Regional Diagnostic and Reference Laboratory	V		
Western Visayas Medical Center	VI		
Allegiant Regional Care Hospital	VII		
Vicente Sotto Memorial Medical Center			
Cebu TB Reference Laboratory			
Eastern Visayas Regional Medical Center	VIII		
Divine Word Hospital	IX		
Zamboanga City Medical Center - DA Satellite Lab			
Southern Philippines Medical Center	XI		
PRC-Port Area	NCR	IV	
National Kidney and Transplant Institute			
Hi-Precision (QC)			
Ilocos Training Regional Medical Center	I		
ABC Clinical Laboratory	NCR	III	
PNP Crime Laboratory			
Safeguard DNA Diagnostics			
Tropical Disease Foundation			
Fe del Mundo Medical Center			
Mariano Marcos Memorial Hospital			I
Cagayan Valley Medical Center	II		
Southern Isabela Medical Center			
The Medical City - Clark	III		
Bataan General Hospital			
Green City Medical Center	IVA		
Batangas Medical Center			
San Pablo College Medical Center			
Calamba Medical Center	VI		
Bacolod Queen of Mercy Hospital			
Teresita Jalandoni Provincial Hospital			
Western Visayas State University Medical Center	VII		
Governor Celestino Gallares Memorial Medical Center (Bohol)			
Northern Mindanao TB Regional Center	X		
TB Reference Center- CHD Region X			
Northern Mindanao Medical Center			
Polymedic Medical Plaza			
Davao One World Diagnostic Center Incorporated	XI		
Cotabato Regional Medical Center	XII		
Adela Serra TY Memorial Medical Center	XIII		
CARAGA Regional Hospital			

Additional laboratory for May 18

FACILITY NAME (RT-PCR using Gene Xpert)	REGION	STAGE
Zamboanga City Medical Center	IX	V
Cagayan Valley CHD TB Reference Laboratory	II	
Dr. Jose B. Rodriguez Memorial Hospital and Sanitarium (TALA)	NCR	
Lung Center of the Philippines		
Northern Mindanao Medical Center	X	
Ospital ng Palawan	IVB	
Cotabato Regional Medical Center	XII	IV
Regional 1 Medical Center	I	III
Mariano Marcos Memorial Hospital		
Ilocos Training Regional Medical Center		
Cagayan Valley Medical Center	II	
Central Luzon Doctor's Hospital	III	
Philippine Tuberculosis Society, Inc.- Quezon Institute	NCR	
San Lazaro Hospital		
Tondo Medical Center		
Tropical Disease Foundation		
Philippine Heart Center		
Western Visayas Medical Center (WVMC)	VI	
Butuan Medical Center	CARAGA	
Davao Doctors' Hospital	XI	
Davao Regional Medical Center		
Davao TB Reference Laboratory		
Dr. Arturo Pingoy Medical Center	XII	

STATUS OF LABORATORY LICENSING

As of May 18, 2020



Goal: Increase Resilience, Stop Transmission, Reduce Contact

BEHAVIORAL MESSAGES OF THE DAY

As of May 18, 2020

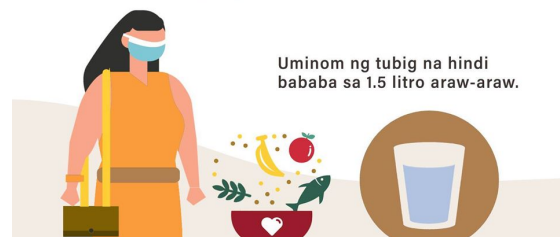
- As the country ushers in the New Normal era, minimum health standards are essential to keep everyone healthy and safe. Everyone should observe hand hygiene and proper coughing manners. For healthcare workers and repatriates staying in [hotels and inns](#), everyone is advised to maintain a healthy diet and to exercise regularly. Face masks should be worn at all times and alcohol-based sanitizers must be used.
- The importance of hand hygiene is reiterated as the country transitions to the New Normal; everyone should wash their hands regularly for at least 20 seconds using soap and water.
- While staying at home is advised, necessary errands require some people to go outside. Everyone should practice safety measures when outside, such as wearing face mask at all times, bringing essentials such as alcohol-based sanitizers, and practicing physical distancing.
- To protect the mental health of everyone in the midst of the pandemic, parents are advised to encourage their children to play and participate in recreational activities so long as the child and their caretakers are safe.
- Other illnesses are still present despite the country's focus on the pandemic. Tuberculosis patients need to [maintain their health](#), especially since they are susceptible to developing complications.

MINIMUM HEALTH STANDARDS: FAQs - HOTELS AND INNS



Q: Paano mapapanatili ng empleyado at guests ng hotels at inns ang kanilang kalusugang pisikal at mental?

A: Kumain ng masustansya, laging isaisip ang prinsipyong Pinggang Pinoy ng DOH. Iwasang kumain ng pagkain na sobrang tamis, alat, at taba.



WHEN DO I CONTACT THE BARANGAY HEALTH EMERGENCY RESPONSE TEAM (BHERT)?

These are the SEVERE SYMPTOMS you need to watch out for:



Difficulty breathing



Mental confusion or changes in alertness



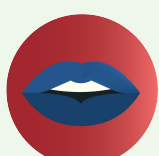
Shortness of breath



Drowsiness and/or difficulty waking up



Persistent pain or pressure in the chest



Pale, bluish face and lips

In case you experience any of the following severe symptoms, call your **Barangay Health Emergency Response Team (BHERT)** immediately. They will refer you to the appropriate facility close to your residence.

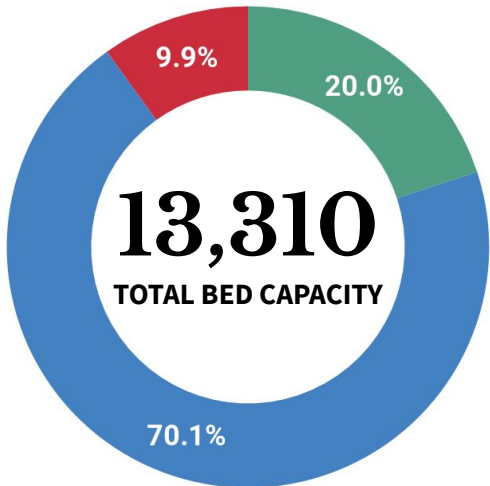


Goal: Enhance quality, consistency, and affordability of care provision

HOSPITAL BEDS AND MECHANICAL VENTILATORS DEDICATED TO COVID-19 CASES

Data taken from the DOH DataCollect App. Specific for COVID-19 cases.

As of May 18, 2020



927
Ward beds occupied

1,726
available

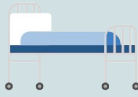


Ward beds for confirmed COVID-19 cases



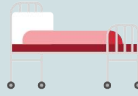
3,461
Isolation beds occupied

5,859
available



463
ICU beds occupied

874
available



376
Mech vents in use

1,566
available



DEDICATED BEDS FOR COVID-19 CASES IN TTMFs

As of May 18, 2020

Local Isolation and General Treatment Areas for COVID-19 cases (LIGTAS COVID centers) are community-managed facilities dedicated for quarantine or isolation of suspected COVID-19 cases.

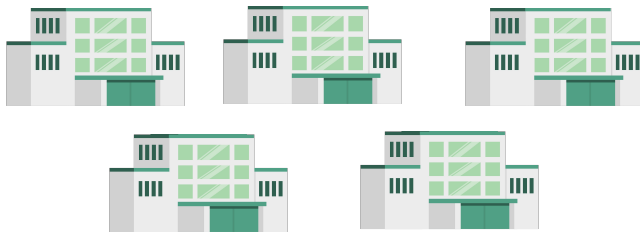


46,168
BEDS IN LIGTAS COVID FACILITIES

MEGA LIGTAS AND LIGTAS COVID-19 FACILITIES

As of May 18, 2020

Mega LIGTAS COVID-19 Facilities are facilities dedicated for quarantine and isolation which are managed by the National Government



5 MEGA LIGTAS COVID FACILITIES

REGION	TTMF	Beds
NCR	PICC	294
NCR	World Trade Center	502
NCR	Rizal Memorial Coliseum	132
NCR	Ninoy Aquino Stadium	120
REG III	Philippine Arena	300
TOTAL		1348

NCR	1347
CAR	342
REG I	7132
REG II	1256
REG III	1460
REG IV-A	3313
REG IV-B	870
REG V	6932
REG VI	3093

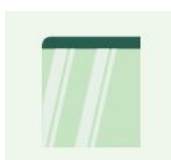
REG VII	10423
REG VIII	787
REG IX	1253
REG X	1733
REG XI	2879
REG XII	1345
REG XIII	665
BARMM	1338
TOTAL	46,168

PERSONAL PROTECTIVE EQUIPMENT AND OTHER HEALTH EQUIPMENT DISTRIBUTED

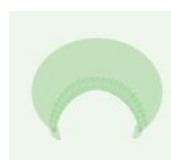
May 18, 2020



716,795
Coveralls



179,276
Face Shield



804,985
Head caps



4,079,950
Face Masks



1,368,570
Gloves



2,672
Thermal Scanners



683,514
Gowns



594,908
Goggles



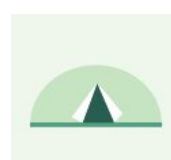
122,000
Aprons



488,380
Kn95
475,580
N95



30
Non-invasive
Ventilators



10
Sanitation Tents

FOREIGN AND LOCAL DONATIONS PROCESSED

May 18, 2020

Summary of donated PPEs:



2,723,950



307,740
N95 Masks



51
Ventilators



202,819
Coveralls

DONOR	RT-PCR BRAND	QUANTITY
Ministry of Health Brunei Mammoth Foundation	BGI (China)	101,000
Shanghai Nanjiang Co., Ltd.	Beijing Applied Technologies(China)	483,840
People's Republic of China Mr. Carlos Gonzalez San Miguel Corporation	Sansure (China)	285,408
Gov't of Singapore Temasek Foundation	A*Star Fortitude (Singapore)	640,000
Udenna Foundation Korea International Cooperation Agency	Q SenS (South Korea)	85,000
Global Fund - Philippine Business for Social Progress	Gene Xpert Cepheid (USA)	15,000
TOTAL		1,610,248

TREATMENT

For case management of COVID-19 patients, healthcare providers are advised to adhere to the existing [PSMID Guidelines](#).

FDA CIRCULAR

The Food and Drug Administration (FDA) issued FDA Circular No. 2020-017¹ to inform all concerned stakeholders and partners regarding the prohibition on the selling of essential emergency medicines and medical devices beyond the price ceiling/range set by the Department of Health Department Memorandum (DM) No. 2020-0058² dated 31 January 2020, DM No. 2020-0058-A dated 11 February 2020, DM No. 2020-0058-B dated 05 March 2020, and Department Circular 2020-0186 dated 15 April 2020 declaring the price freeze of essential emergency medicines and supplies in the entire country due to the 2019- Novel Coronavirus (Covid19).

The public is encouraged to check the authorization status of establishments and health products at the [FDA website](#).

PHILHEALTH FOR ALL

The Philippine Health Insurance Corporation, to provide coverage for all Filipinos for health services in identified Community Isolation Units (CIUs) for COVID-19, hereby issues PHILHEALTH CIRCULAR No. 2020-0012³ to operationalize the PhilHealth COVID-19 Community Isolation Benefit Package (CCIBP) and provide specific guidelines for benefit availment and applicable payment mechanism, reporting rules and performance assessment.

POLICY IN-FOCUS

To provide guidance for sectoral planning on the implementation of non-pharmaceutical interventions (NPIs) as minimum public health standards to mitigate the threat of COVID-19, the Department of Health hereby issues the guidelines on the risk-based public health standards for COVID-19 mitigation¹ and must be adhered to by all sectors including groceries, wet markets, and food retails.

Check the FAQs [here](#).



Contact Details

For further information, you may reach us through the following platforms:

SOCIAL MEDIA ACCOUNTS

- f Facebook:**
fb.com/OfficialDOHgov
- Twitter:**
[@DOHgovph](https://twitter.com/DOHgovph)
- Viber:**
DOH PH COVID-19
- TikTok:**
[@dohgovph](https://tiktok.com/@dohgovph)

WEBSITES

- DOH:**
www.doh.gov.ph
- Healthy Pilipinas:**
healthypilipinas.ph

CONTACT NUMBERS

- (02) 894 - COVID (26843) or 1555 (for all subscribers)
- Telemedicine hotlines (NCR):
TeleMed: (02) 8424 1724
KonsultaMD (02) 7798 8000

Resources

- FDA Circular No. 2020-017 - prohibition on the selling of essential emergency medicines and medical devices beyond the price ceiling/range set by the DOH DM No. 2020-0058: <https://www.fda.gov.ph/wp-content/uploads/2020/05/FDA-Circular-No.2020-017.pdf>
- DOH DM No. 2020-0058- https://drive.google.com/file/d/19ERYJ_ZT8XDKZz0Ox3uz5zDmp4Ajmm0Eo/view
- PHILHEALTH CIRCULAR No. 2020-0012 - <https://www.philhealth.gov.ph/circulars/2020/circ2020-0012.pdf?fbclid=IwAR3aTJm-KDlrL3TloZOSHlyYv0bv5tmK4vxAh8y1iKvmkoiOvL9Y7c0q6g>

THANK YOU for checking out the 22nd issue of Beat COVID-19 Today! We'd like to know what you think. Send us your feedback at dohfeedback@gmail.com.