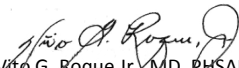
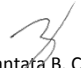


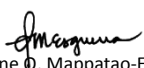


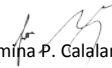
**EDITORIAL BOARD**

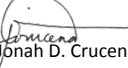
  
Vito G. Roque Jr., MD, PHSAE  
OIC Director IV, Epidemiology Bureau

Chief, PHSD, Epidemiology Bureau

  
June Cantata B. Corpuz, RN  
Nurse III, PIDSR


  
Lee Anne D. Mappatao-Esguerra, RN  
Nurse II, NT Surveillance

  
Ma. Romina P. Calalang-Aquino, RN  
Nurse II, AFP Surveillance

  
Jezza Jonah D. Crucena, RN  
Nurse II, AEFI

  
Jobelle M. Aquino, RN  
Nurse II, Measles Surveillance

  
Kris Pauline D. Martinez, RN  
Nurse II, NVPD Surveillance - AMES

  
Van Farrah S. Ibea  
Nurse I, NVPD Surveillance - Rotavirus

**Trend**

A total of 1,536 suspect measles cases were reported nationwide from January 1 to April 18, 2015. Of these, 440 (28.65%) were classified as laboratory confirmed (387) and epi-linked (53) cases (see Table 1). The number of confirmed measles cases decreased significantly in 2015 (98.15%) compared with last year (see Table 2).

Figure 3 shows the distribution of confirmed measles cases by morbidity month. The data includes laboratory confirmed and epi-linked confirmed measles cases.

**Geographic distribution**

The distribution of confirmed measles cases varied considerably among the regions (see Figure 2). Most of the confirmed cases came from Region XI (20.23%), Region IX (15.00%) and Region VI (11.82%).

**Profile of cases**

Fifty four percent of the confirmed measles cases were male. Majority of the confirmed cases belonged to the children less than 9 months old (18%). Among the confirmed measles cases, 31% were vaccinated with measles containing vaccine, 57% were not vaccinated and 12% have unknown vaccination status. Two among the confirmed measles cases died (CFR=0.45).

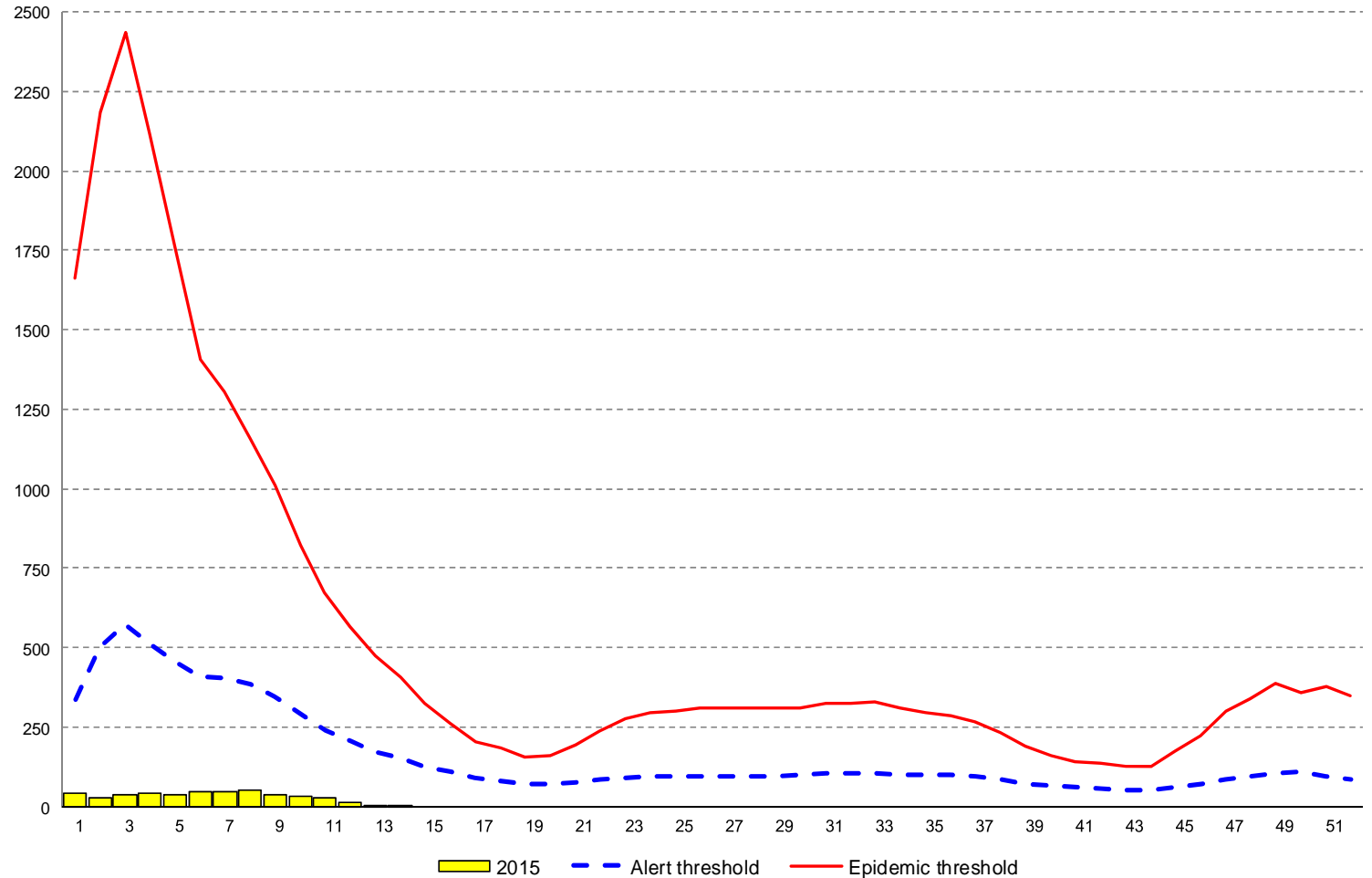
**TABLE 1. MEASLES AND RUBELLA CASES BY REGION  
PHILIPPINES, JANUARY 1 – APRIL 18, 2015 (N=1,536)**

REGION	TARGET 2/100K	REPORTED	CONFIRMED MEASLES		MEASLES COMPATIBLE	CONFIRMED RUBELLA		DISCARDED AS NON- MEASLES/RUBELLA	PENDING CLASSIFICATION
			LABORATORY CONFIRMED	EPI-LINKED CONFIRMED		LABORATORY CONFIRMED	EPI-LINKED CONFIRMED		
1	101	55	1	0	18	7	0	28	1
2	69	59	5	0	34	2	0	12	6
3	226	56	1	0	12	4	0	38	1
4A	294	135	1	0	56	7	0	69	2
4B	60	19	1	0	13	3	0	1	1
5	117	6	0	0	1	0	0	5	0
6	152	157	52	0	16	28	0	60	1
7	149	67	34	0	1	6	0	26	0
8	88	97	8	5	82	0	0	2	0
9	75	156	62	4	49	1	0	40	0
10	95	166	28	12	111	0	0	15	0
11	99	176	77	12	49	2	0	34	2
12	93	119	38	4	59	1	0	10	7
ARMM	70	35	5	2	22	0	0	6	0
CAR	35	63	26	0	5	1	0	25	6
CRG	52	85	36	13	23	0	0	12	1
NCR	260	85	12	1	25	7	0	40	0
<b>PHL</b>	<b>2,035</b>	<b>1,536</b>	<b>387</b>	<b>53</b>	<b>576</b>	<b>69</b>	<b>0</b>	<b>423</b>	<b>28</b>



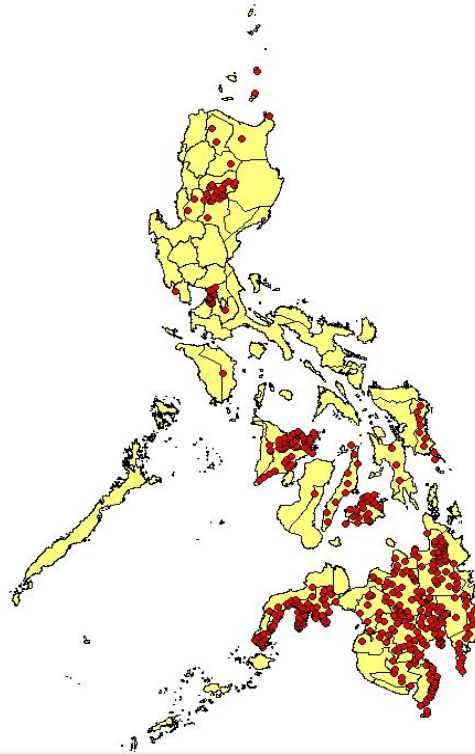
Morbidity Week	2015 cases	Alert Threshold	Epidemic Threshold
1	43	335	1,255
2	28	502	2,795
3	35	576	2,672
4	41	513	2,396
5	35	456	1,637
6	45	407	1,518
7	45	403	1,359
8	49	384	1,299
9	38	346	1,035
10	33	294	837
11	26	242	707
12	12	204	571
13	5	173	511
14	5	151	418
15		126	348
16		108	228
17		91	237
18		82	171
19		72	163
20		70	151
21		77	188
22		85	256
23		92	305
24		93	322
25		94	317
26		95	330
27		95	342
28		97	318
29		96	327
30		100	343
31		103	319
32		104	373
33		103	351
34		102	328
35		101	309
36		101	304
37		93	294
38		85	250
39		73	184
40		66	148
41		60	165
42		55	127
43		53	127
44		51	142
45		60	126
46		70	255
47		87	293
48		93	396
49		102	387
50		108	461
51		93	405
52		85	337

**FIGURE 1. CONFIRMED\* MEASLES ALERT AND EPIDEMIC THRESHOLD  
PHILIPPINES, JANUARY 1 – APRIL 18, 2015 (n=440)**





**FIGURE 2. DISTRIBUTION OF CONFIRMED\* MEASLES CASES  
PHILIPPINES, JANUARY 1 – APRIL 18, 2015 (n=440)**



**TABLE 2. CONFIRMED\* MEASLES CASES AND DEATHS BY REGION  
PHILIPPINES, 2014 vs. 2015\*\* (n=440)**

REGION	CASES			DEATHS			
	2015	2014	% CHANGE	2015	CFR (%)	2014	CFR (%)
1	1	761	↓-99.87	0	0.00	7	0.92
2	5	667	↓-99.25	0	0.00	1	0.15
3	1	2815	↓-99.96	0	0.00	11	0.39
4A	1	4818	↓-99.98	0	0.00	36	0.75
4B	1	347	↓-99.71	0	0.00	4	1.15
5	0	663	↓-100.00	0	0.00	5	0.75
6	52	942	↓-94.48	0	0.00	1	0.11
7	34	1143	↓-97.03	0	0.00	3	0.26
8	13	273	↓-95.24	0	0.00	4	1.47
9	66	268	↓-75.37	0	0.00	0	0.00
10	40	925	↓-95.68	0	0.00	3	0.32
11	89	1617	↓-94.50	2	2.25	3	0.19
12	42	1273	↓-96.70	0	0.00	2	0.16
ARMM	7	439	↓-98.41	0	0.00	3	0.68
CAR	26	213	↓-87.79	0	0.00	0	0.00
CRG	49	756	↓-93.52	0	0.00	2	0.26
NCR	13	5823	↓-99.78	0	0.00	32	0.55
<b>PHL</b>	<b>440</b>	<b>23743</b>	<b>↓-98.15</b>	<b>2</b>	<b>0.45</b>	<b>117</b>	<b>0.49</b>

2015\*\* = as of April 18, 2015

Confirmed\* Measles cases = Laboratory confirmed + Epi-linked confirmed Measles



**FIGURE 3. CONFIRMED\* MEASLES CASES BY REGION AND MONTH  
PHILIPPINES, 2014 VS. 2015\*\* (n=440)**

 2015 CASES       2014 CASES

FIGURE 3.1.

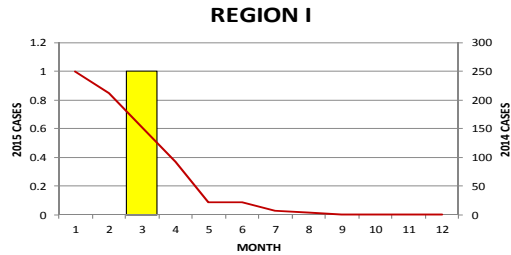


FIGURE 3.2.

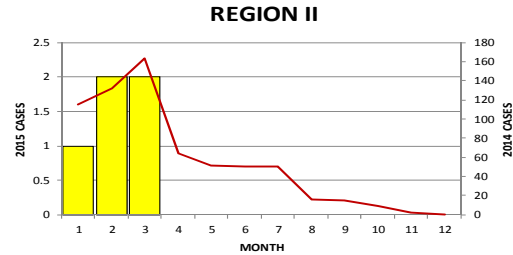


FIGURE 3.3.

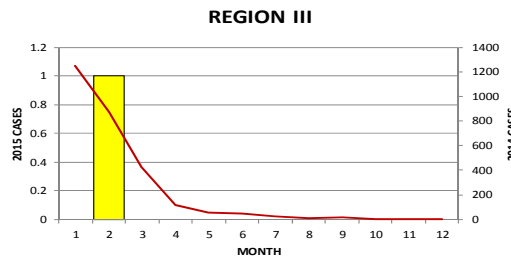


FIGURE 3.5.

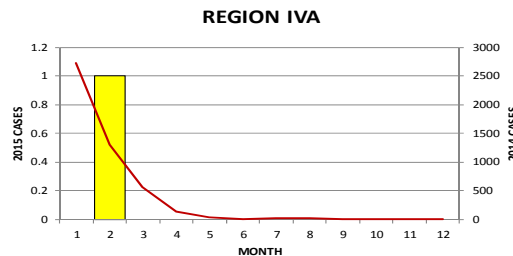


FIGURE 3.6.

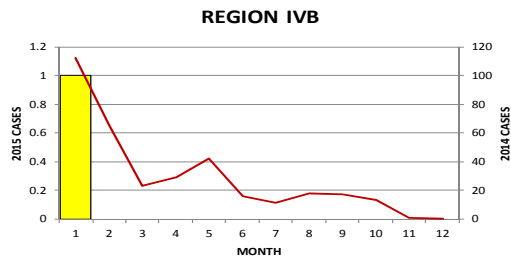


FIGURE 3.7.

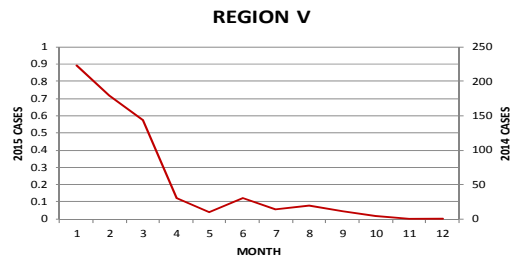


FIGURE 3.8.

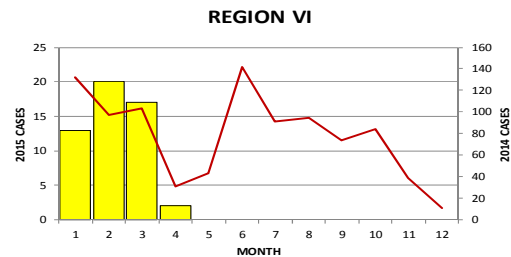


FIGURE 3.9.

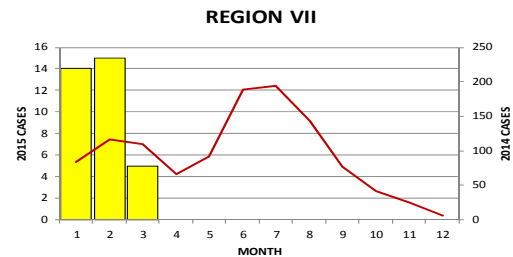


FIGURE 3.10.

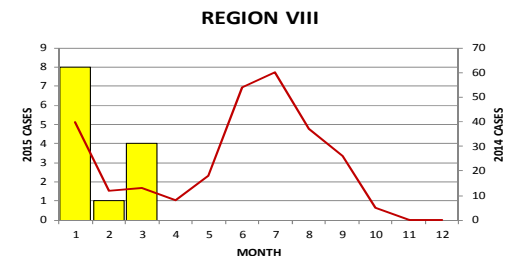


FIGURE 3.11.

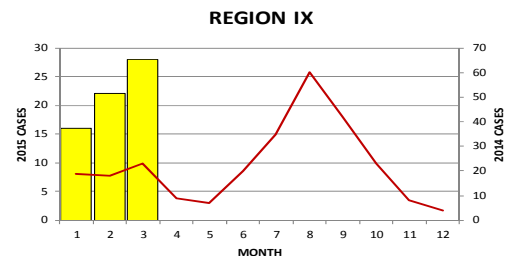




FIGURE 3.12.

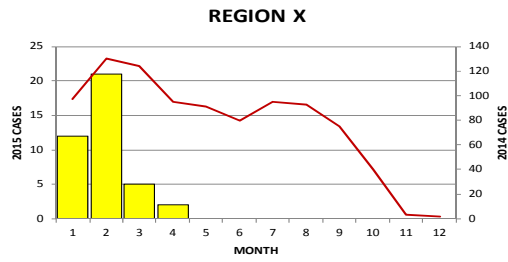


FIGURE 3.13.

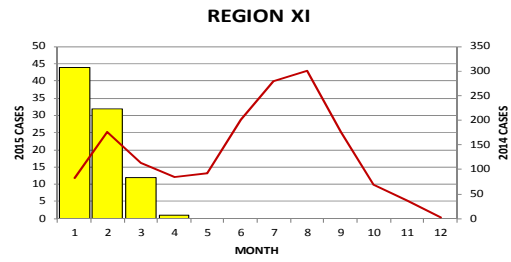


FIGURE 3.14.

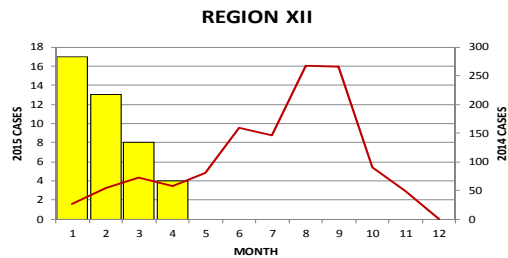


FIGURE 3.15.

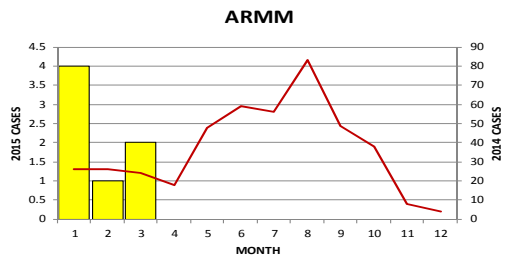


FIGURE 3.16.

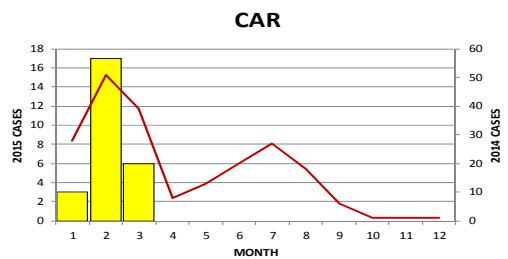


FIGURE 3.17.

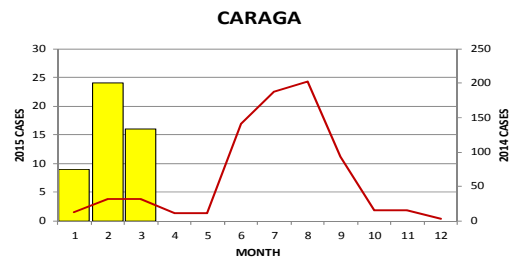


FIGURE 3.18.

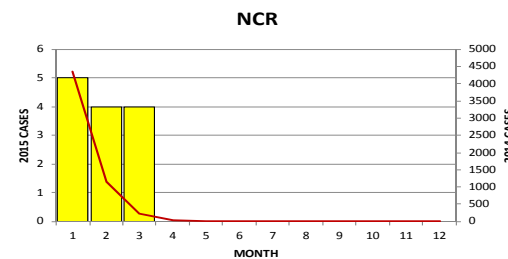
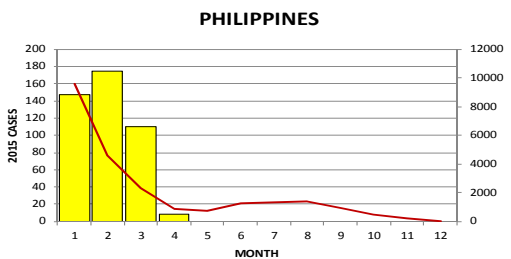


FIGURE 3.19.



2015\*\* = as of April 18, 2015

Confirmed\* Measles cases = Laboratory confirmed + Epi-linked confirmed Measles



**FIGURE 4. IMMUNIZATION STATUS OF CONFIRMED\* MEASLES CASES BY AGE GROUP  
PHILIPPINES, JANUARY 1 – APRIL 18, 2015 (n=440)**

■ VACCINATED ■ NOT VACCINATED ■ UNKNOWN

FIGURE 4.1.

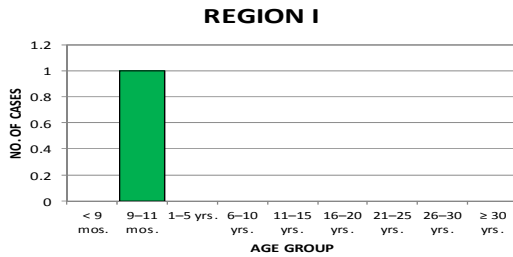


FIGURE 4.2.

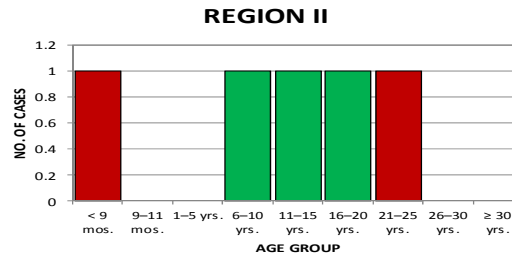


FIGURE 4.3.

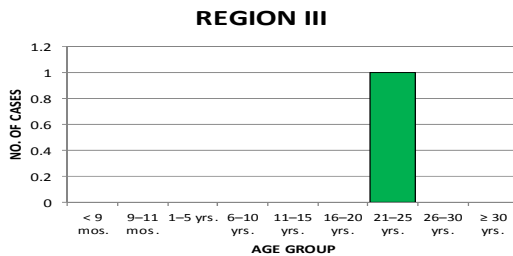


FIGURE 4.4.

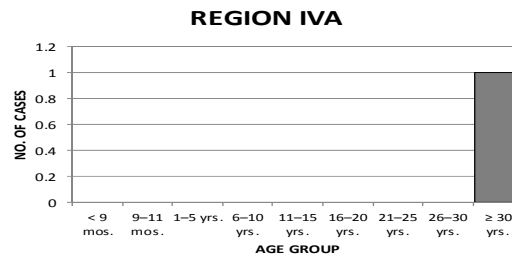


FIGURE 4.5.

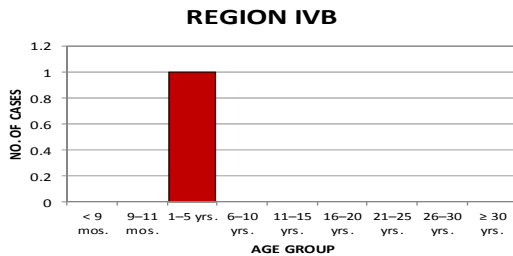


FIGURE 4.6.

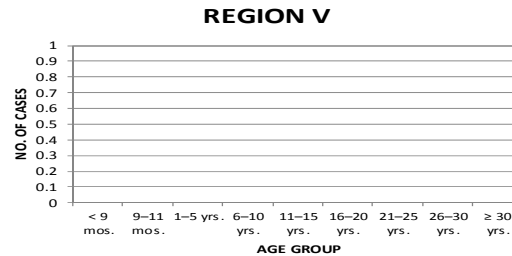


FIGURE 4.7.

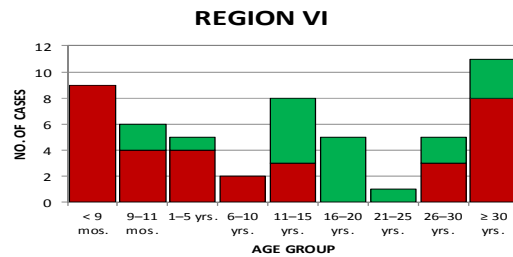


FIGURE 4.8.

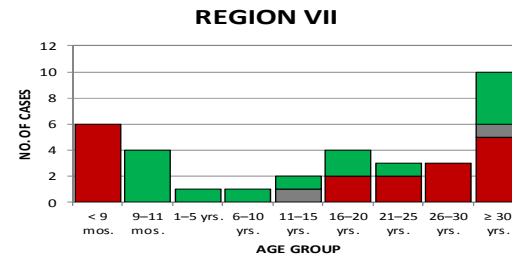


FIGURE 4.9.

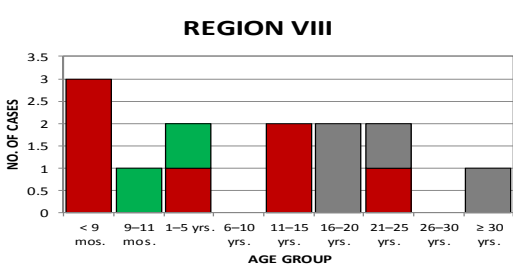


FIGURE 4.10.

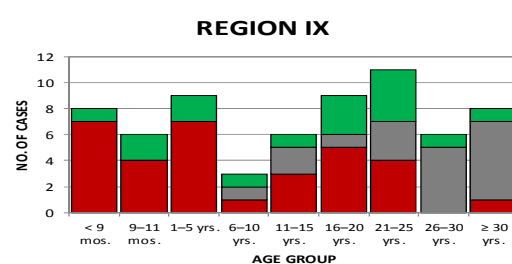




FIGURE 4.11.

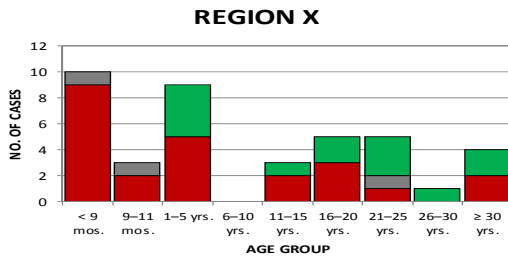


FIGURE 4.12.

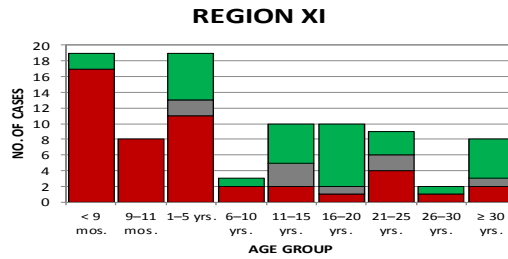


FIGURE 4.13.

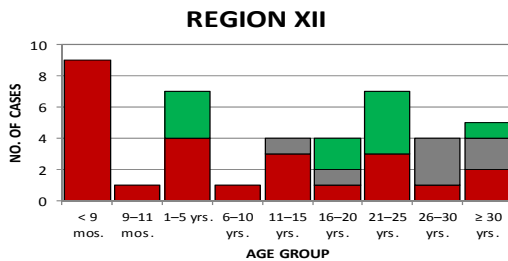


FIGURE 4.14.

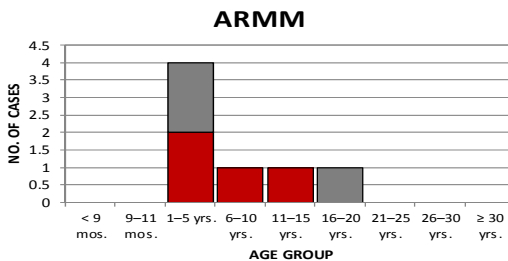


FIGURE 4.15.

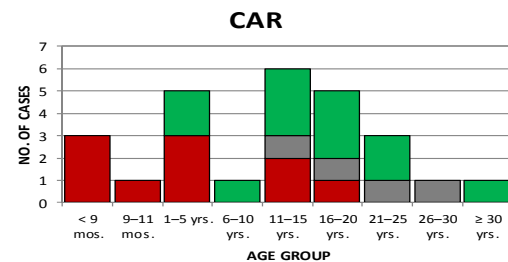


FIGURE 4.16.

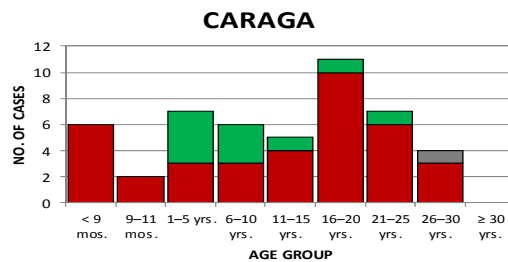


FIGURE 4.17.

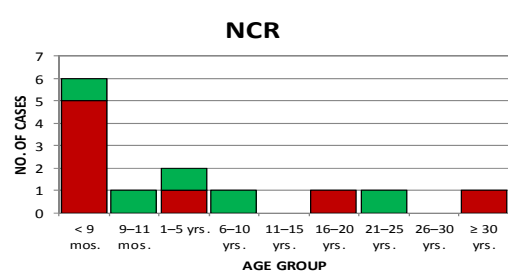
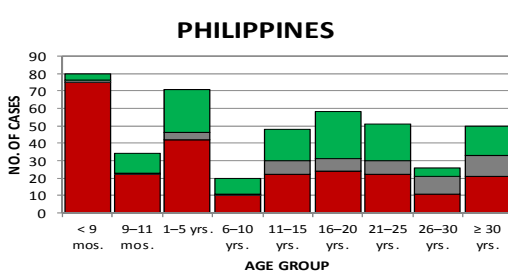


FIGURE 4.18.



Confirmed\* Measles cases = Laboratory confirmed + Epi-linked confirmed Measles



**FIGURE 5. CONFIRMED\* MEASLES CASES BY AGE GROUP AND SEX  
PHILIPPINES, JANUARY 1 – APRIL 18, 2015 (n=440)**

MALE FEMALE

FIGURE 5.1.

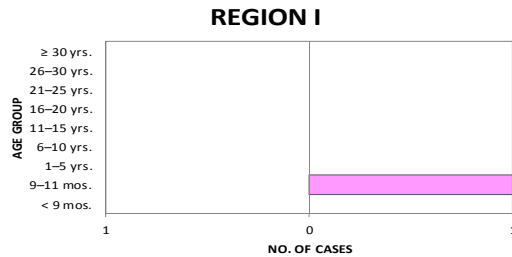


FIGURE 5.2.

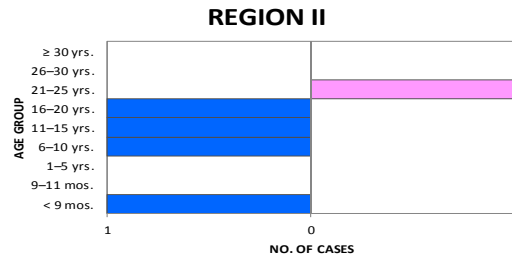


FIGURE 5.3.

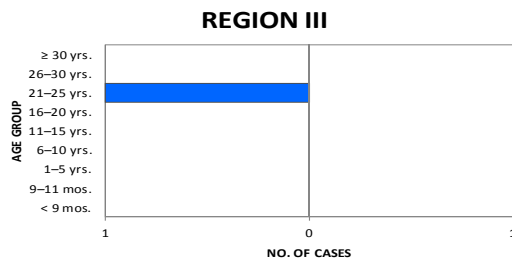


FIGURE 5.4.

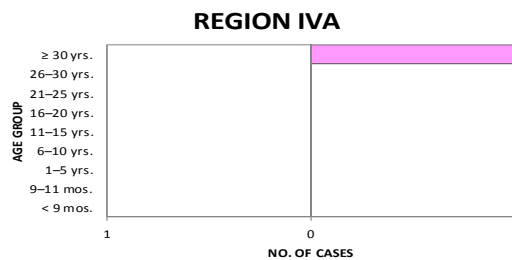


FIGURE 5.5.

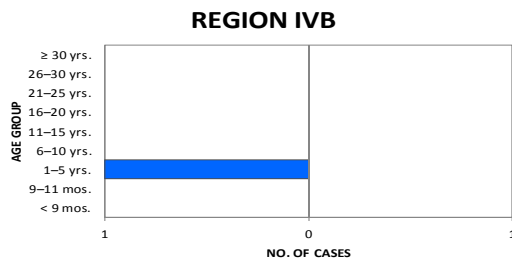


FIGURE 5.6.

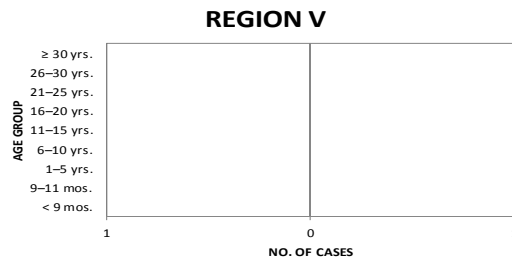


FIGURE 5.7.

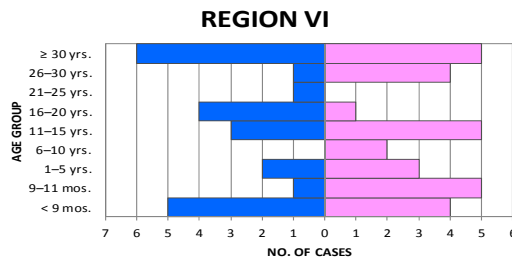


FIGURE 5.8.

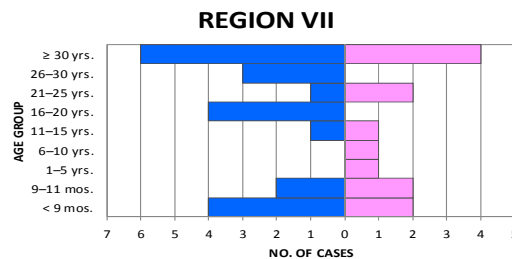


FIGURE 5.9.

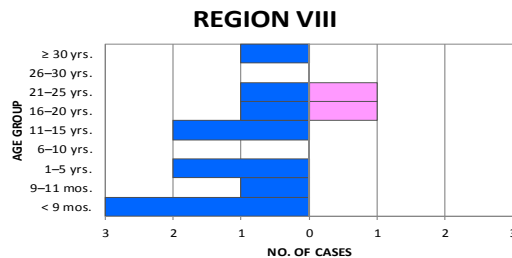


FIGURE 5.10.

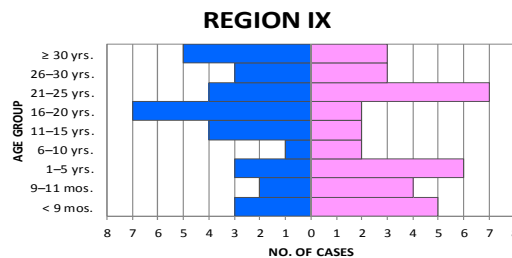






FIGURE 5.11.

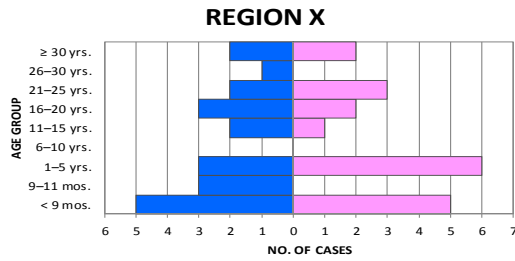


FIGURE 5.12.

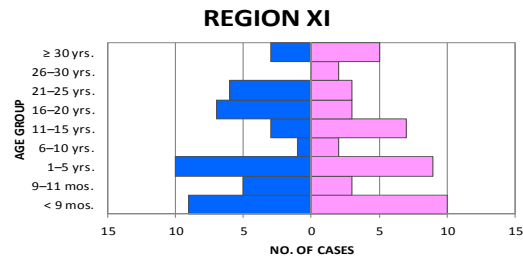


FIGURE 5.13.

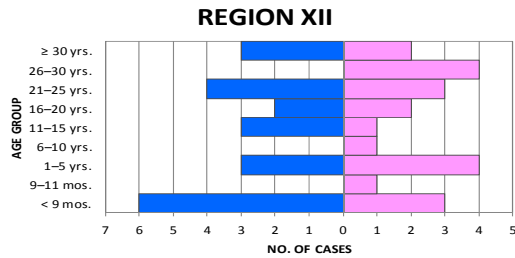


FIGURE 5.14.

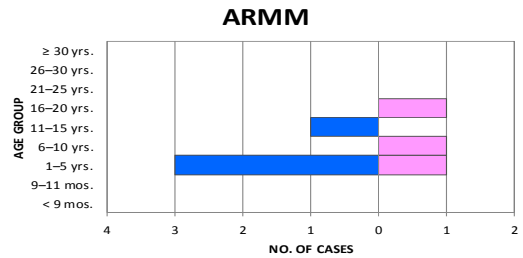


FIGURE 5.15.

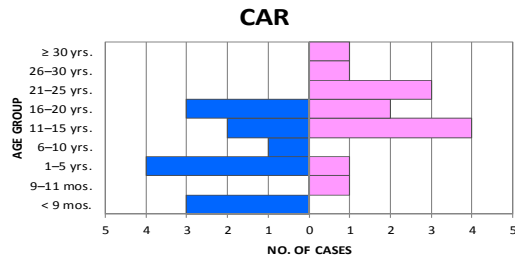


FIGURE 5.16.

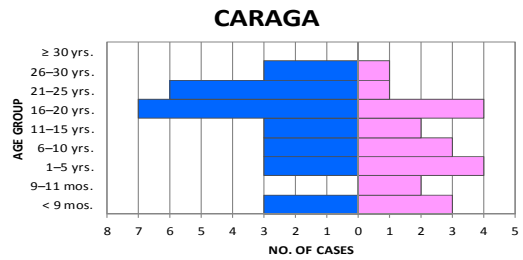


FIGURE 5.17.

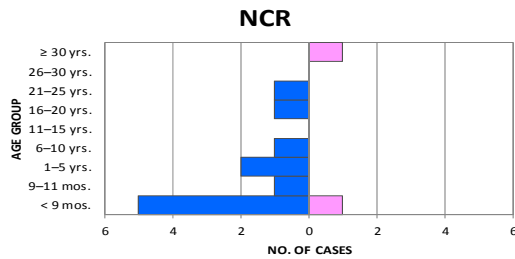
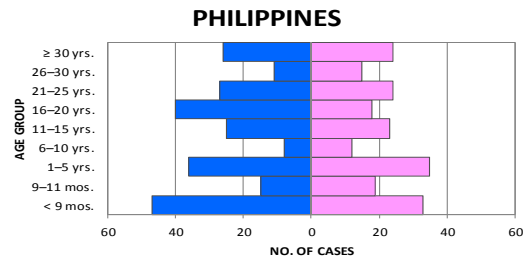


FIGURE 5.18.



Confirmed\* Measles cases = Laboratory confirmed + Epi-linked confirmed Measles



**FIGURE 6. CASE FATALITY RATIO AMONG CONFIRMED\* MEASLES CASES BY AGE GROUP  
PHILIPPINES, JANUARY 1 – APRIL 18, 2015 (n=2)**

FIGURE 6.1.

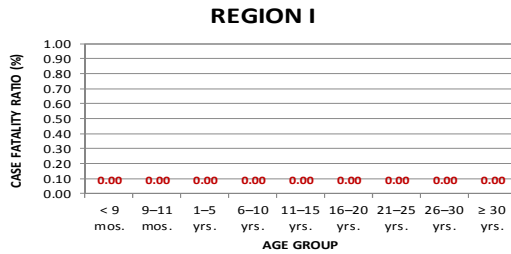


FIGURE 6.2.

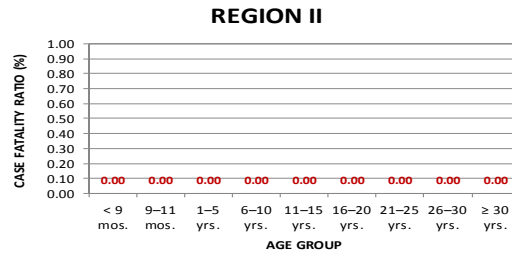


FIGURE 6.3.

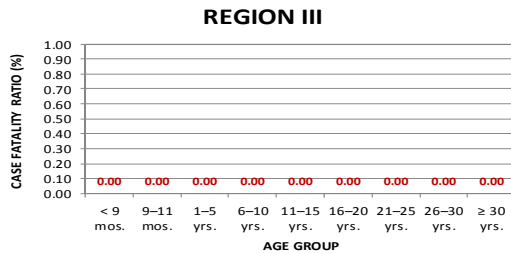


FIGURE 6.4.

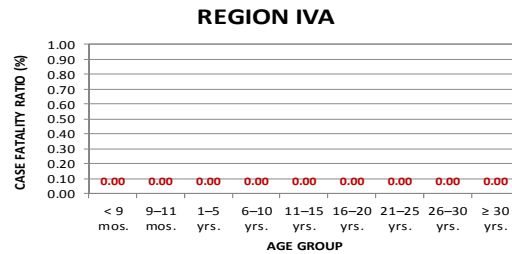


FIGURE 6.5.

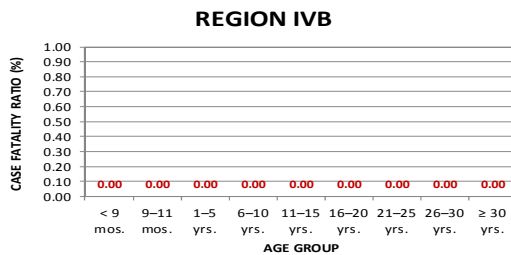


FIGURE 6.6.

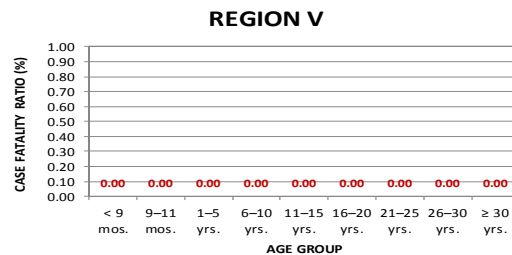


FIGURE 6.7.

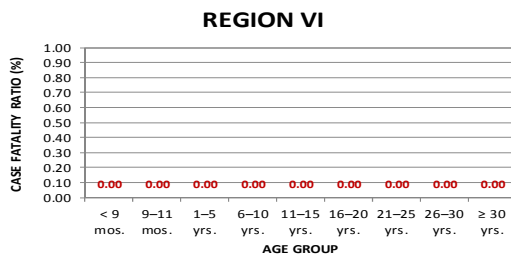


FIGURE 6.8.

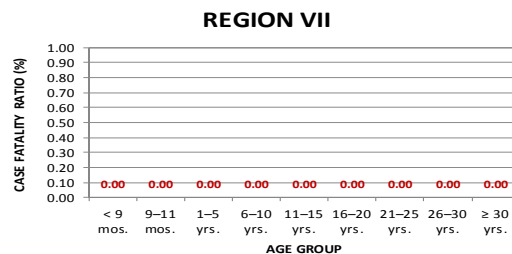


FIGURE 6.9.

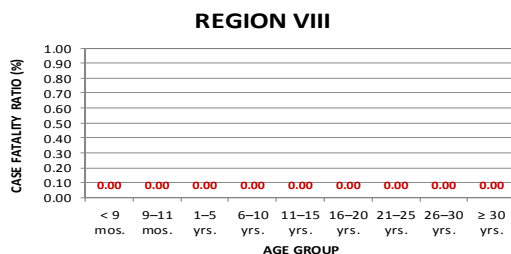


FIGURE 6.10.

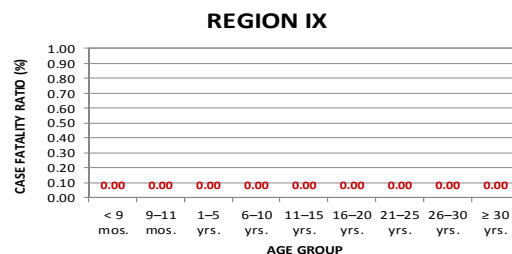




FIGURE 6.11.

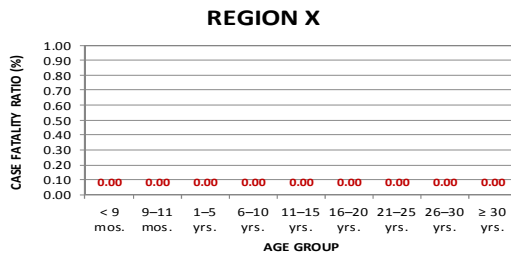


FIGURE 6.12.

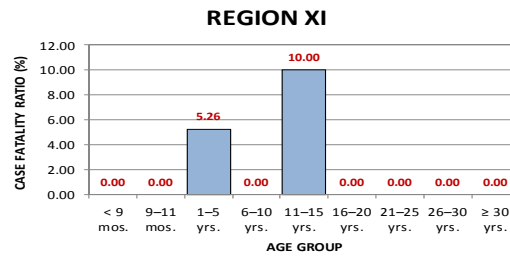


FIGURE 6.13.

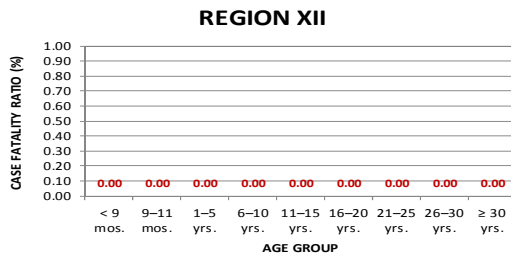


FIGURE 6.14.

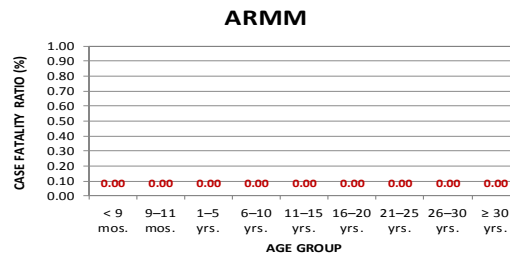


FIGURE 6.15.

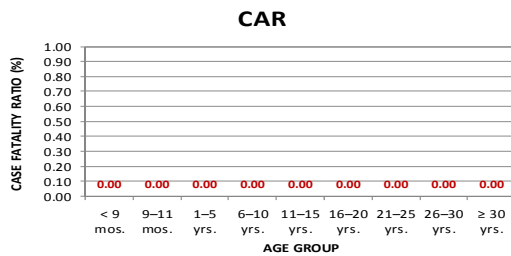


FIGURE 6.16.

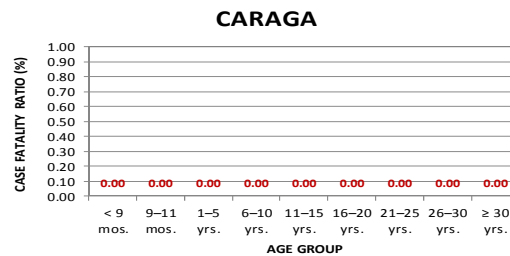


FIGURE 6.17.

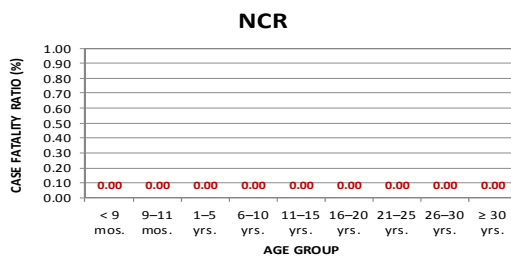
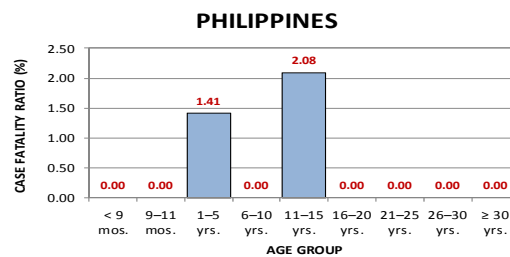


FIGURE 6.18.



Confirmed\* Measles cases = Laboratory confirmed + Epi-linked confirmed Measles



### Measles Elimination in the Philippines

The goal for Measles elimination in the Western Pacific Region was set in 2005. In September 2012, the Regional Committee for the Western Pacific Region encouraged its member states to undertake the challenges for Measles elimination.

The Department of Health through the Epidemiology Bureau take part in achieving this goal by closely monitoring the standard surveillance indicators to ensure that the Measles elimination goal will be attained and sustained. Currently, the Philippines has exceeded the low incidence target rate of <1/1million population (12.97/1,000,000 population), illustrating that the country needs to exert more efforts in attaining the elimination goal.

**TABLE 3. MEASLES SURVEILLANCE INDICATORS BY REGION  
PHILIPPINES, JANUARY 1 – APRIL 18, 2015**

REGION	MEASLES INCIDENCE RATE		BLOOD ADEQUACY RATE		SUSPECT MEASLES CASES ADEQUATELY INVESTIGATED		SUSPECT MEASLES REPORTING RATE		NON-MEASLES/ NON-RUBELLA RATE		MEASLES COMPATIBLE %	
	Target: <1/1,000,000 Pop.		Target: ≥80%		Target: ≥80%		Target: ≥2/100,000 Pop.		Target: ≥2/100,000 Pop.		Target: <10%	
	2014	2015*	2014	2015	2014	2015	2014	2015*	2014	2015*	2014	2015
1	152.42	0.59	91	82	80	51	47.65	3.27	3.89	1.66	59	33
2	195.19	4.33	65	76	53	53	59.45	5.11	2.19	1.04	64	58
3	254.46	0.27	79	89	59	46	57.72	1.49	4.10	1.01	49	21
4A	337.15	0.20	72	67	33	27	63.00	2.75	4.21	1.41	41	41
4B	117.53	1.00	43	42	27	26	61.81	1.90	2.17	0.10	77	68
5	115.22	0.00	71	100	60	100	34.63	0.31	2.10	0.26	61	17
6	125.53	20.52	96	97	52	69	33.25	6.19	7.45	2.37	38	10
7	156.38	13.72	90	97	66	82	29.21	2.70	3.89	1.05	33	1
8	63.18	8.91	24	16	15	13	32.04	6.65	1.94	0.14	74	85
9	72.87	52.87	65	66	52	21	20.69	12.50	1.50	3.20	58	31
10	197.91	25.16	63	51	52	48	53.01	10.44	3.51	0.94	57	67
11	333.87	54.08	84	93	73	57	68.32	10.69	6.71	2.07	42	28
12	280.13	27.07	50	54	39	39	91.43	7.67	4.40	0.64	65	50
ARMM	126.76	5.98	46	39	33	17	44.47	2.99	1.24	0.51	69	63
CAR	122.88	44.26	96	95	86	78	37.11	10.72	5.13	4.26	51	8
CRG	292.86	56.13	78	78	70	28	75.71	9.74	5.58	1.37	54	27
NCR	456.60	3.01	71	71	41	12	106.46	1.97	5.37	0.92	53	29
PHL	<b>237.73</b>	<b>12.97</b>	<b>71</b>	<b>71</b>	<b>48</b>	<b>43</b>	<b>58.16</b>	<b>4.53</b>	<b>4.15</b>	<b>1.25</b>	<b>52</b>	<b>38</b>

2015\* - Annualized rate

#### Definition of Terms:

**Laboratory confirmed measles case** – A suspect measles case with a positive laboratory test result for measles-specific IgM antibodies or other approved laboratory test method

**Laboratory confirmed rubella case** – A suspect measles case with a positive laboratory test result for rubella-specific IgM antibodies or other approved laboratory test method

**Clinically measles compatible case** – A case that meets the suspect case definition for measles but for which no adequate blood specimen was taken and which has not been linked epidemiologically to another case positive for measles IgM or another laboratory-confirmed communicable disease

**Epidemiologically-linked measles (or rubella) case** – A suspect measles case that has not been confirmed by laboratory but that is geographically AND temporally related (with dates of rash onset occurring between 7 and 21 days apart) to a laboratory-confirmed case or (in the event of an outbreak) to another epidemiologically confirmed measles case.

**Discarded as non-measles/non-rubella** – A case that meets the clinical case definition for measles and discarded as non-measles/rubella case.

**Pending Classification** - Cases with blood specimen collected and pending laboratory results.

**Alert threshold** – Refers to the level of occurrence of disease that serves as an early warning for epidemics. An increase in the number of cases above the threshold level should trigger an investigation, epidemic preparedness and implement appropriate prevention and control measures.

**Epidemic threshold** – Refers to the level of occurrence of disease above which an urgent response is required. The threshold is specific to each disease and depends on the infectiousness, other determinants of transmission and local endemicity levels.