



Morbidity Week 28 – July 12-July 18, 2015

Epidemiology Bureau
Public Health Surveillance Division

Introduction

Leptospirosis is a bacterial disease affecting both humans and animals. The early stages of the disease may include high fever, muscle pain, chills, redness in the eyes, abdominal pain, hemorrhages in skin and mucous membranes (including pulmonary bleeding), vomiting, diarrhea and rashes. Severe cases resulting in liver involvement, kidney failure, or brain involvement. Some cases may have yellowish body discoloration, dark-colored urine and light stools, low urine output, severe headache.

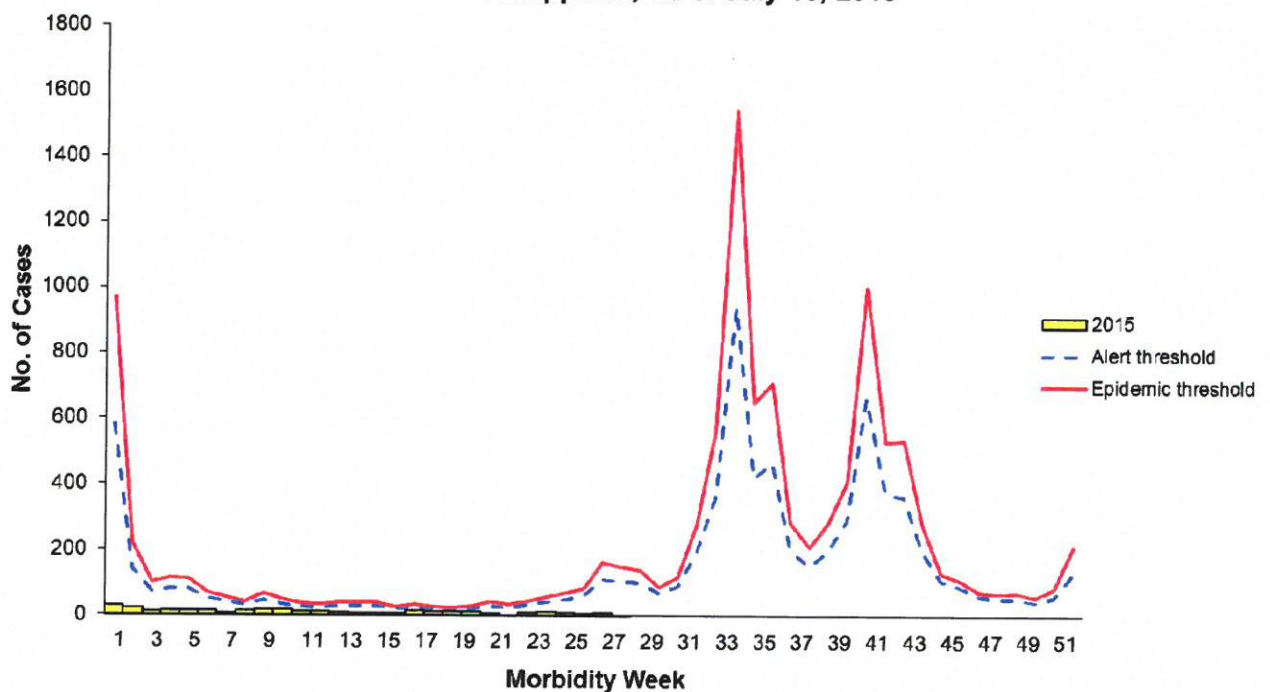
Caused by pathogenic *Leptospira* species bacteria, human infection occurs through direct contact with urine of infected animals or by contact with a urine-contaminated environment. Leptospire can gain entry through cuts and abrasions in the skin and through mucous membranes of the eyes, nose and mouth.

Leptospirosis has low case fatality rate. However, it increases with advancing age and may reach 20% or more in patients with jaundice and kidney damage (Weil's disease) who have not been treated with renal dialysis. Incubation period of the disease is 7-10 days.

Trend in the Philippines

A total of 333 suspect leptospirosis cases were reported nationwide from January 1 to July 18, 2015. This is **19.4%** lower compared to the same time period last year (**413**).

Fig. 1 Distribution of Suspect Leptospirosis Cases by Morbidity Week Philippines, as of July 18, 2015



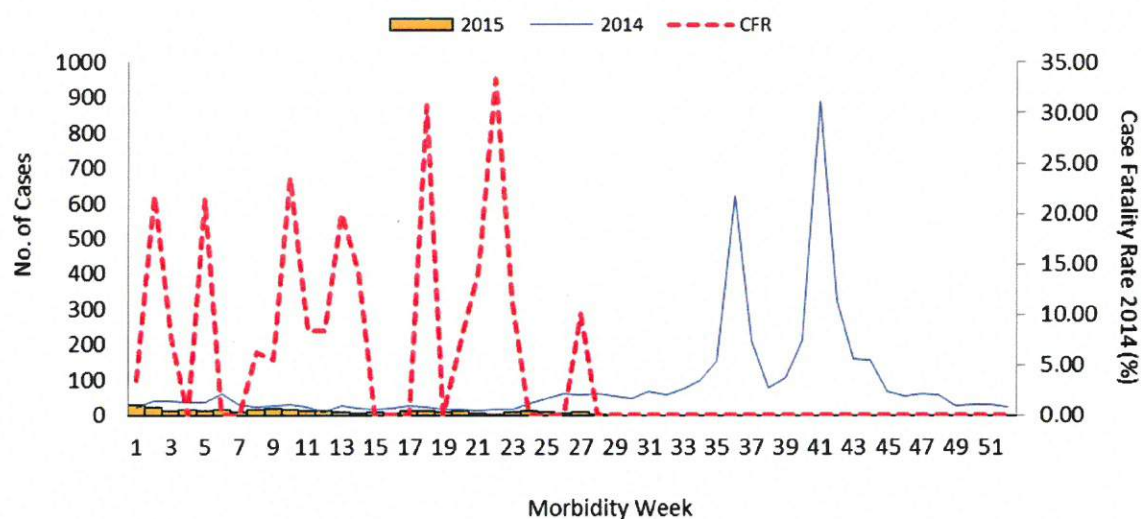
**NOTE: Case counts reported here do NOT represent the final number and are subject to change after inclusion of delayed reports and review of cases.*



Morbidity Week 28 – July 12-July 18, 2015

Epidemiology Bureau
Public Health Surveillance Division

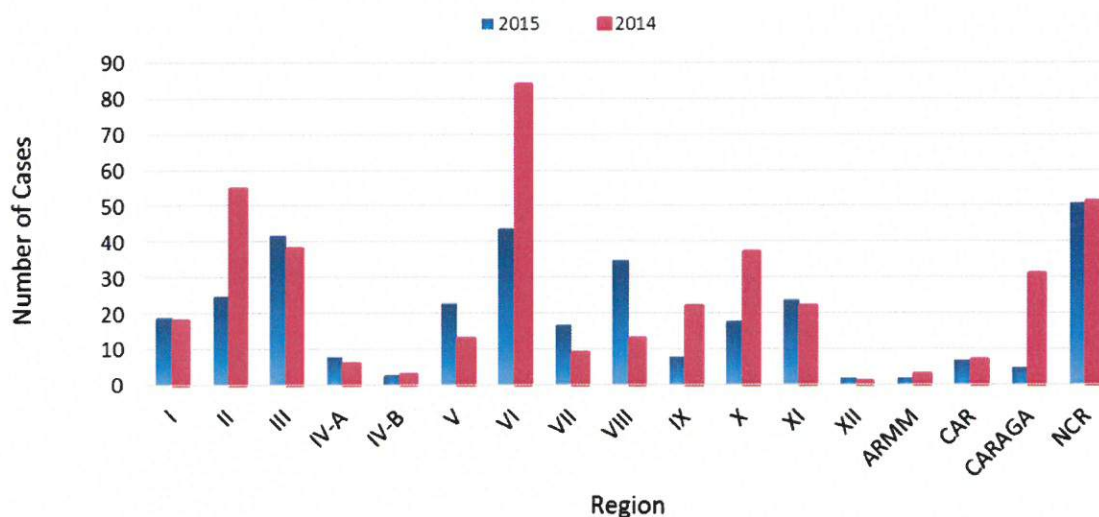
Fig. 2 Suspect Leptospirosis Cases by Morbidity Week,
Philippines, as of July 18, 2015
2015* vs 2014 (N=333)



Geographic Distribution

Most of the cases were from the following regions: **NCR** (15.3%), **REGION VI** (13.2%), **REGION III** (12.6%), **REGION VIII** (10.5%) and **Region II** (7.5%).

Fig. 3 Suspect Leptospirosis Cases by Region
Philippines, 2015 vs 2014



**NOTE: Case counts reported here do NOT represent the final number and are subject to change after inclusive of delayed reports and review of cases.*



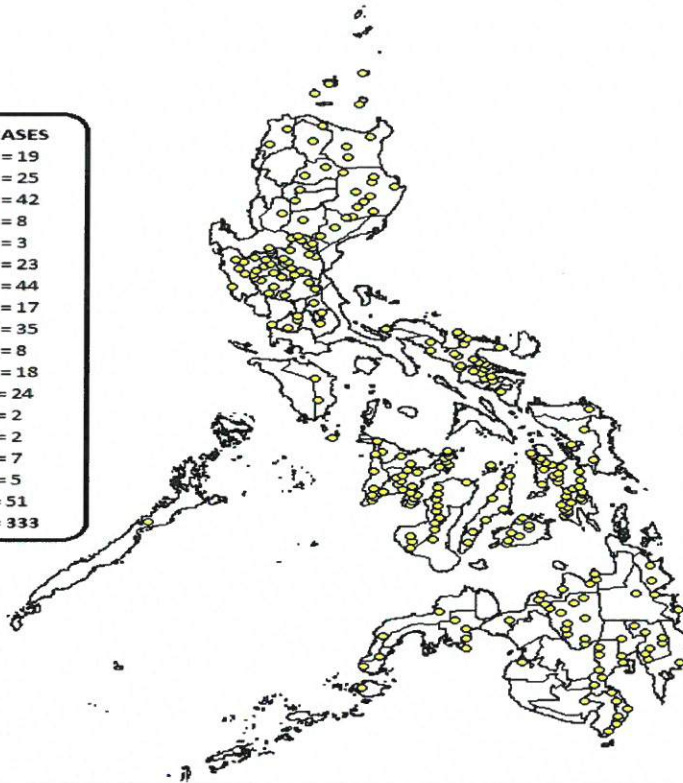
Morbidity Week 28 – July 12-July 18, 2015

Epidemiology Bureau
Public Health Surveillance Division

Leptospirosis Cases, as of January 1 - July 18, 2015

| REGION | CASES |
|--------------|--------------|
| Region 1 | = 19 |
| Region 2 | = 25 |
| Region 3 | = 42 |
| Region 4A | = 8 |
| Region 4B | = 3 |
| Region 5 | = 23 |
| Region 6 | = 44 |
| Region 7 | = 17 |
| Region 8 | = 35 |
| Region 9 | = 8 |
| Region 10 | = 18 |
| Region 11 | = 24 |
| Region 12 | = 2 |
| ARMM | = 2 |
| CAR | = 7 |
| CARAGA | = 5 |
| NCR | = 51 |
| TOTAL | = 333 |

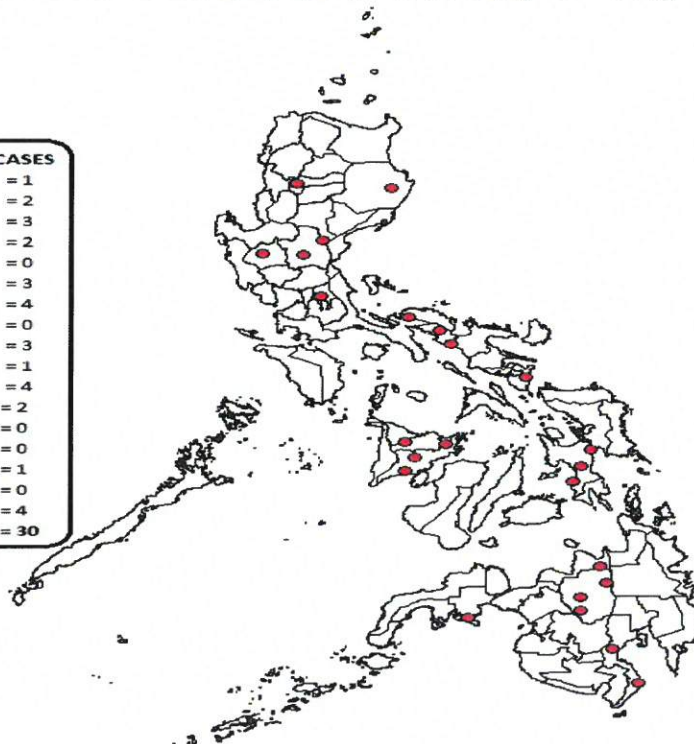
LEGEND
1 Dot = 1 Case



Leptospirosis Deaths, as of January 1 - July 18, 2015

| REGION | CASES |
|--------------|-------------|
| Region 1 | = 1 |
| Region 2 | = 2 |
| Region 3 | = 3 |
| Region 4A | = 2 |
| Region 4B | = 0 |
| Region 5 | = 3 |
| Region 6 | = 4 |
| Region 7 | = 0 |
| Region 8 | = 3 |
| Region 9 | = 1 |
| Region 10 | = 4 |
| Region 11 | = 2 |
| Region 12 | = 0 |
| ARMM | = 0 |
| CAR | = 1 |
| CARAGA | = 0 |
| NCR | = 4 |
| TOTAL | = 30 |

LEGEND
1 Dot = 1 Case





Leptospirosis Cases

Morbidity Week 28 – July 12-July 18, 2015

Epidemiology Bureau
Public Health Surveillance Division

Profile of Cases

Ages of cases ranged from 0 to 78 years old (median = 31.0 years). Majority (89.8%) of cases were male. Most (37.5%) of the cases belonged to the age group of 25 to 39 years old (Fig. 4). There were 30 deaths (9.01%).

Fig. 4 Suspect Leptospirosis Cases by Agegroup and Sex
Philippines, as of July 18, 2015 (N=333)

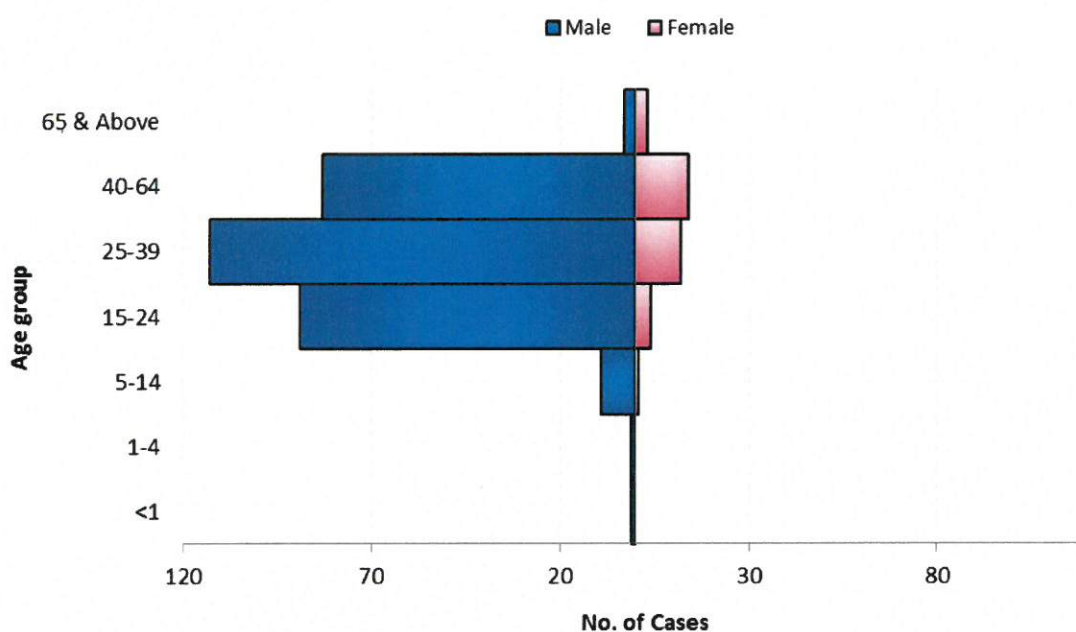
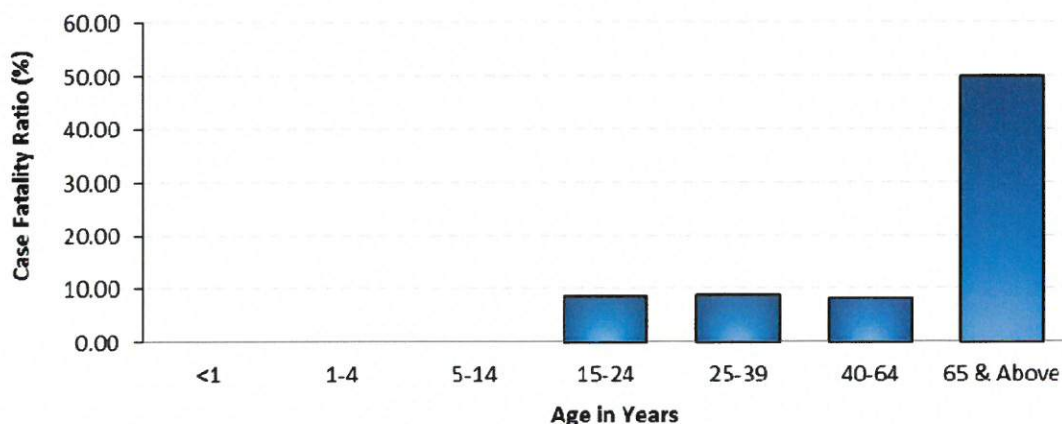


Fig. 5 Suspect Leptospirosis Case Fatality Rate (CFR) by Age Group,
Philippines, as of July 18, 2015



*NOTE: Case counts reported here do NOT represent the final number and are subject to change after inclusive of delayed reports and review of cases.



Leptospirosis Cases

Morbidity Week 28 – July 12-July 18, 2015

Epidemiology Bureau
 Public Health Surveillance Division

Table 1. Leptospirosis Cases & Deaths by Region
 Philippines, 2015* vs 2014

| Region | Cases | | | Deaths | | | |
|--------------|------------|------------|----------------|-----------|-------------|-----------|-------------|
| | 2015 | 2014 | % Change | 2015 | CFR (%) | 2014 | CFR (%) |
| I | 19 | 18 | ↑ 5.6 | 1 | 5.26 | 6 | 33.33 |
| II | 25 | 55 | ↓ -54.5 | 2 | 8.00 | 1 | 1.82 |
| III | 42 | 38 | ↑ 10.5 | 3 | 7.14 | 1 | 2.63 |
| IV-A | 8 | 6 | ↑ 33.3 | 2 | 25.00 | 1 | 16.67 |
| IV-B | 3 | 3 | → 0.0 | 0 | 0.00 | 0 | 0.00 |
| V | 23 | 13 | ↑ 76.9 | 3 | 13.04 | 1 | 7.69 |
| VI | 44 | 84 | ↓ -47.6 | 4 | 9.09 | 3 | 3.57 |
| VII | 17 | 9 | ↑ 88.9 | 0 | 0.00 | 0 | 0.00 |
| VIII | 35 | 13 | ↑ 169.2 | 3 | 8.57 | 1 | 7.69 |
| IX | 8 | 22 | ↓ -63.6 | 1 | 12.50 | 2 | 9.09 |
| X | 18 | 37 | ↓ -51.4 | 4 | 22.22 | 1 | 2.70 |
| XI | 24 | 22 | ↑ 9.1 | 2 | 8.33 | 1 | 4.55 |
| XII | 2 | 1 | ↑ 100.0 | 0 | 0.00 | 0 | 0.00 |
| ARMM | 2 | 3 | ↓ -100.0 | 0 | 0.00 | 0 | 0.00 |
| CAR | 7 | 7 | → 0.0 | 1 | 14.29 | 0 | 0.00 |
| CARAGA | 5 | 31 | ↓ -83.9 | 0 | 0.00 | 3 | 9.68 |
| NCR | 51 | 51 | → 0.0 | 4 | 7.84 | 5 | 9.80 |
| Total | 333 | 413 | ↓ -19.4 | 30 | 9.01 | 26 | 6.30 |

Table 2. Weekly Leptospirosis Summary Report by Region
 Philippines, as of July 18, 2015

| Region | Morbidity Week | | | | 28th Morbidity Week | | Cumulative Total 1st wk to 28th wk | |
|--------------|----------------|-----------|----------|----------|---------------------|----------|---------------------------------------|------------|
| | 23 | 24 | 25 | 26 | 2015 | 2014 | 2015 | 2014 |
| I | 0 | 0 | 1 | 0 | 0 | 3 | 19 | 18 |
| II | 1 | 1 | 0 | 0 | 0 | 1 | 25 | 55 |
| III | 1 | 0 | 2 | 1 | 4 | 6 | 42 | 38 |
| IV-A | 1 | 0 | 0 | 1 | 0 | 0 | 8 | 6 |
| IV-B | 0 | 0 | 0 | 0 | 0 | 0 | 3 | 3 |
| V | 0 | 0 | 0 | 1 | 0 | 2 | 23 | 13 |
| VI | 1 | 2 | 2 | 0 | 2 | 3 | 44 | 84 |
| VII | 0 | 1 | 0 | 1 | 1 | 0 | 17 | 9 |
| VIII | 0 | 0 | 0 | 0 | 0 | 0 | 35 | 13 |
| IX | 1 | 0 | 0 | 0 | 0 | 1 | 8 | 22 |
| X | 1 | 3 | 0 | 1 | 0 | 4 | 18 | 37 |
| XI | 1 | 1 | 2 | 0 | 3 | 3 | 24 | 22 |
| XII | 0 | 0 | 0 | 0 | 0 | 0 | 2 | 1 |
| ARMM | 0 | 0 | 0 | 0 | 0 | 0 | 2 | 3 |
| CAR | 1 | 1 | 0 | 1 | 0 | 1 | 7 | 7 |
| CARAGA | 0 | 1 | 0 | 0 | 0 | 0 | 5 | 31 |
| NCR | 1 | 2 | 2 | 0 | 0 | 9 | 51 | 51 |
| Total | 9 | 12 | 9 | 6 | 10 | 8 | 333 | 413 |

*NOTE: Case counts reported here do NOT represent the final number and are subject to change after inclusion of delayed reports and review of cases.



Morbidity Week 28 – July 12-July 18, 2015

Epidemiology Bureau
Public Health Surveillance Division


Treatment

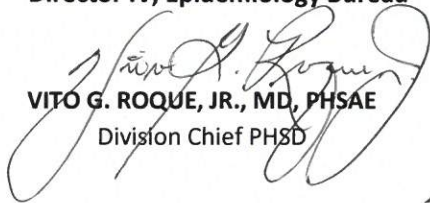
- Take antibiotics duly prescribed by a physician.
- Early recognition and treatment within 2 days of illness prevents complications of leptospirosis, so early consultation is advised.

Prevention and Control

- Avoid swimming or wading in potentially contaminated water or flood water.
- Use proper protection, like boots and gloves, when work requires exposure to contaminated water.
- Drain potentially contaminated water when possible.
- Control rodents in the household by using rat traps or rat poison and maintaining cleanliness in the house.

EDITORIAL BOARD

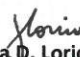

RIO L. MAGPANTAY, MD, PHSAE, CESO III
Director IV, Epidemiology Bureau


VITO G. ROQUE, JR., MD, PHSAE
Division Chief PHSD

Allan P. Ignacio
Statistician II


June Cantata B. Corpuz, RN
Nurse III


Diana Marie L. Sadiasa, RN
National Data Manager-


Joysa D. Lorico, RN
National Data Manager-


Daisy Regine O. Pedron, RN
National Data Manager-