



Morbidity Week 26: June 26-July 2, 2016

Epidemiology Bureau
Public Health Surveillance Division

Trend in the Philippines

This report summarizes PIDSRI ILI surveillance activities nationwide. A total of **49,231** Influenza-like Illness cases were reported nationwide from January 1 to July 2, 2016. This is **13.5%** lower compared to the same time period last year (**56,904**).

Fig. 1 Distribution of Influenza-like Illness Cases by Morbidity Week
Philippines, as of July 2, 2016 (N=49,231)

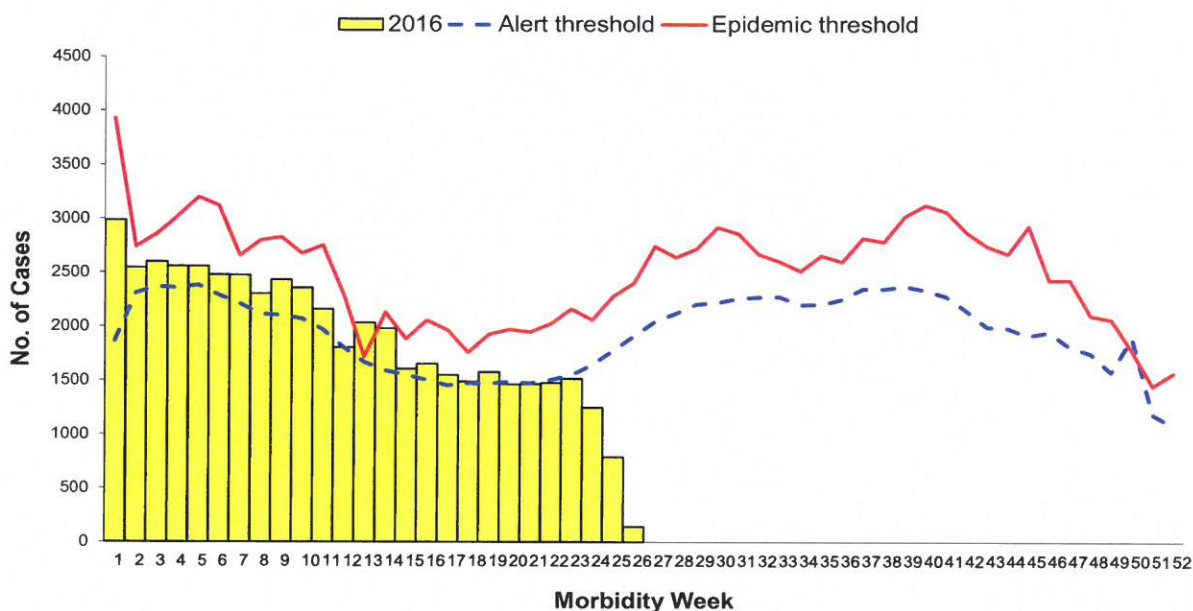
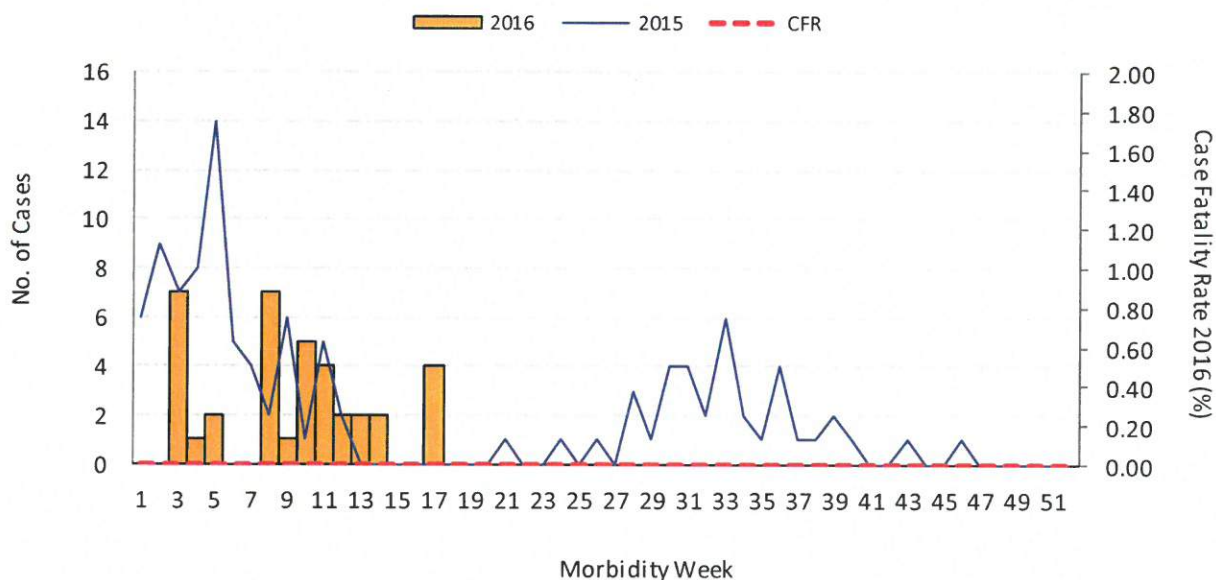


Fig. 2 Influenza Cases by Morbidity Week,
Philippines, as of July 2, 2016
2016* vs 2015 (n=37)





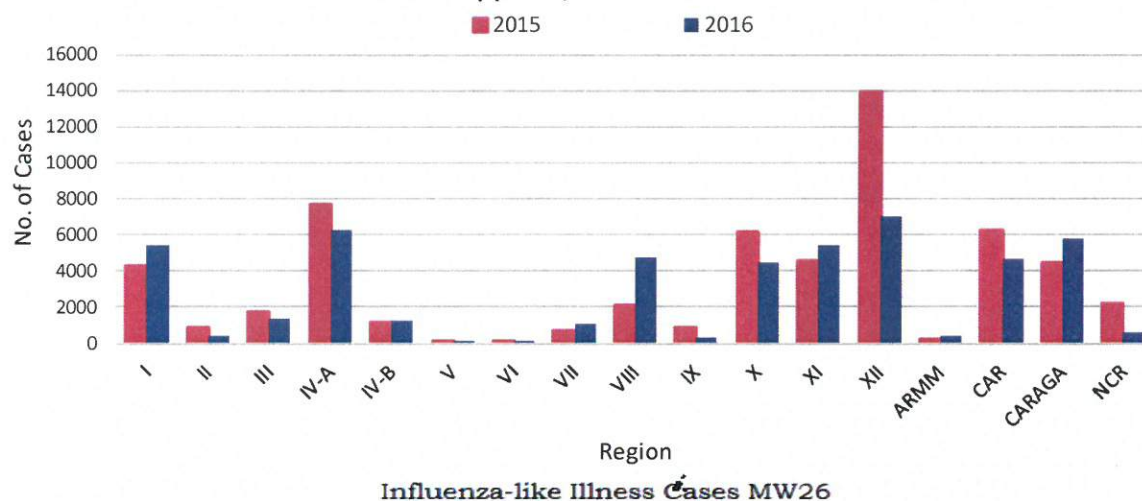
Morbidity Week 26: June 26-July 2, 2016

Epidemiology Bureau
Public Health Surveillance Division

Geographic Distribution

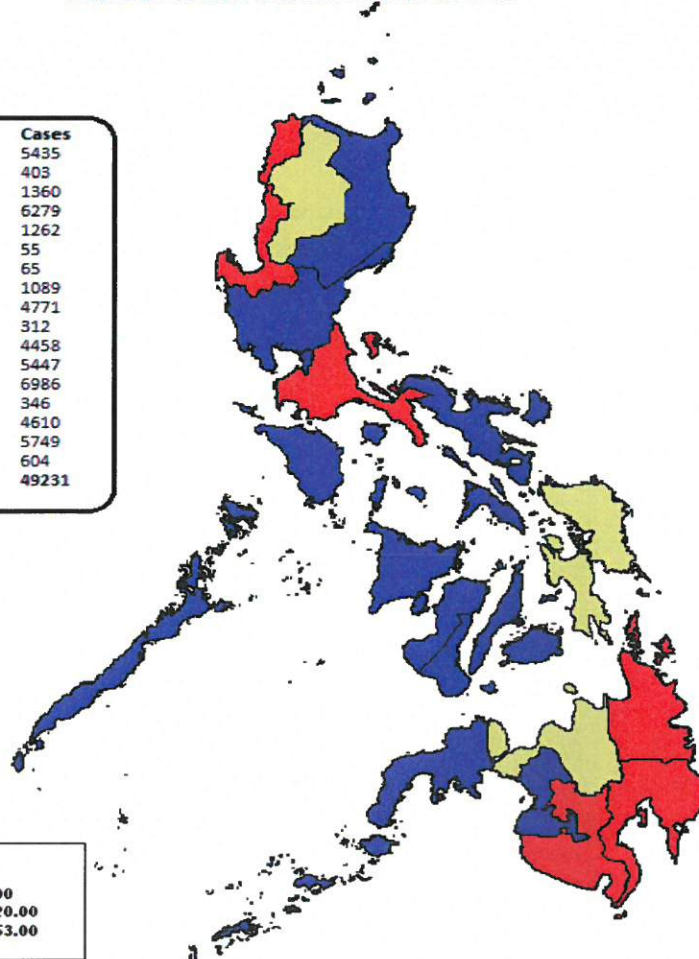
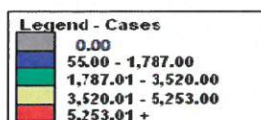
Most of the cases were from the following regions: **Region XII** (14.2%), **Region IVA** (12.8%), **CARAGA** (11.7%), **Region XI** (11.1%) and **Region I** (11%) (Fig. 3).

Fig.3 Influenza-like Illness Cases by Region
Philippines, 2016* vs 2015



Influenza-like Illness Cases MW26

Region	Cases
I	5435
II	403
III	1360
IVA	6279
IVB	1262
V	55
VI	65
VII	1089
VIII	4771
IX	312
X	4458
XI	5447
XII	6986
ARMM	346
CAR	4610
CARAGA	5749
NCR	604
PHILIPPINES	49231





Morbidity Week 26: June 26-July 2, 2016

Epidemiology Bureau
Public Health Surveillance Division

Profile of Cases

Ages of cases ranged from less than 1 month to 100 years old (median= 6 years). Majority of cases were male (50.5%). Most of the cases belonged to the 1 to 4 years age group (29.6%) (Fig. 4). There were 11 reported deaths (CFR=0.02%) (Fig. 5).

Fig. 4 Influenza-like Illness Cases by Agegroup and Sex
Philippines, as of July 2, 2016 (N=49,231)

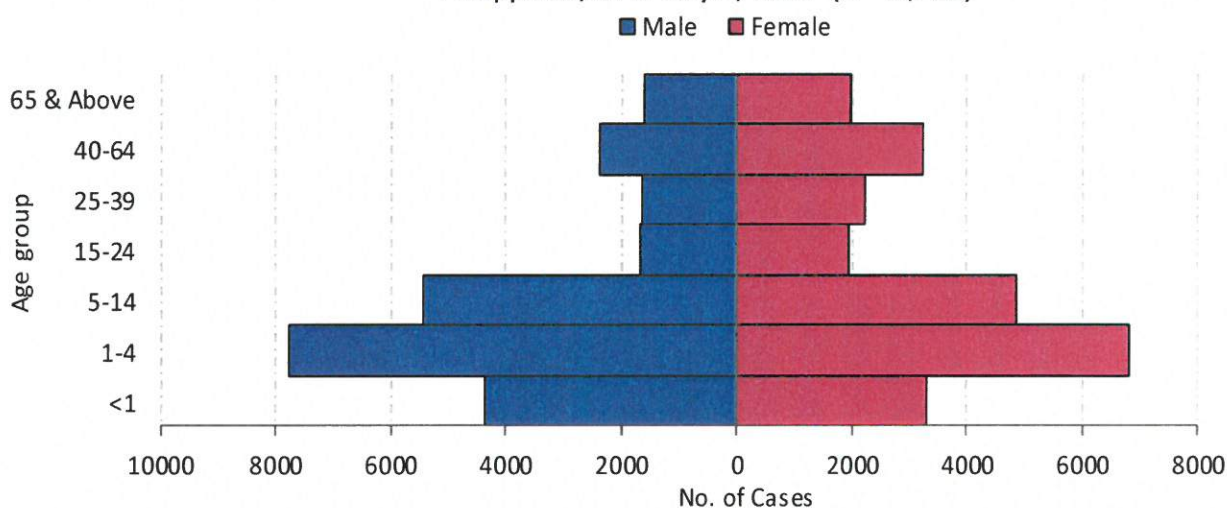
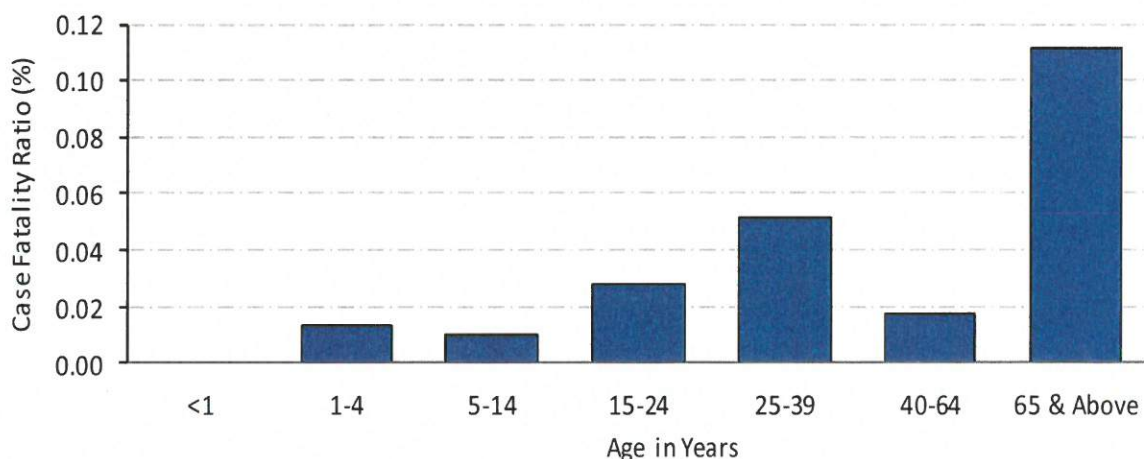


Fig. 5 Influenza-like Illness Case Fatality Rate (CFR) by Age Group,
Philippines, as of July 2, 2016



**NOTE: Case counts reported here do NOT represent the final number and are subject to change after inclusion of delayed reports and review of cases.*



Morbidity Week 26: June 26-July 2, 2016

Epidemiology Bureau
Public Health Surveillance Division

Distribution of Influenza Type in the Philippines

Influenza type data are based on the samples collected from the suspected Influenza cases in all regions of the Philippines. Out of 49,231 cases, 1109 (2.3%) cases were tested. Of the tested cases, 1060 (95.6%) yielded negative, 12 (1.1%) with pending laboratory result and 37 (3.3%) were laboratory confirmed Influenza cases (Fig. 6). Out of the confirmed cases, (75.7%) were *Influenza A (H1N1) pdm09*, (21.6%) were *Influenza B* and (2.7%) *Parainfluenza 1* (Fig.7).

Fig.6 Number of Specimens Collected for Influenza
Philippines, as of July 2, 2016 (N=1,109)

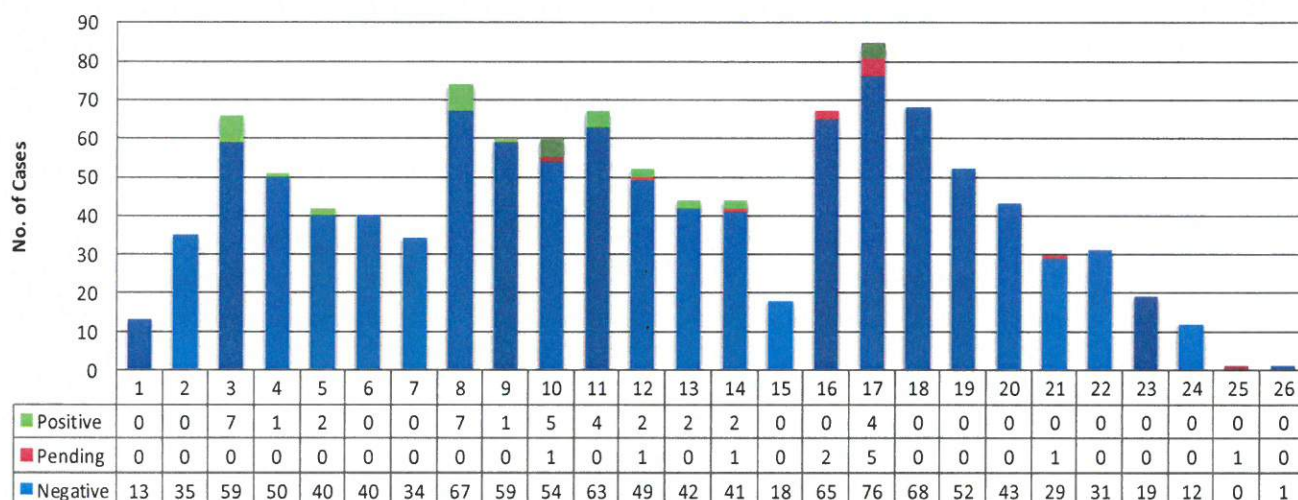
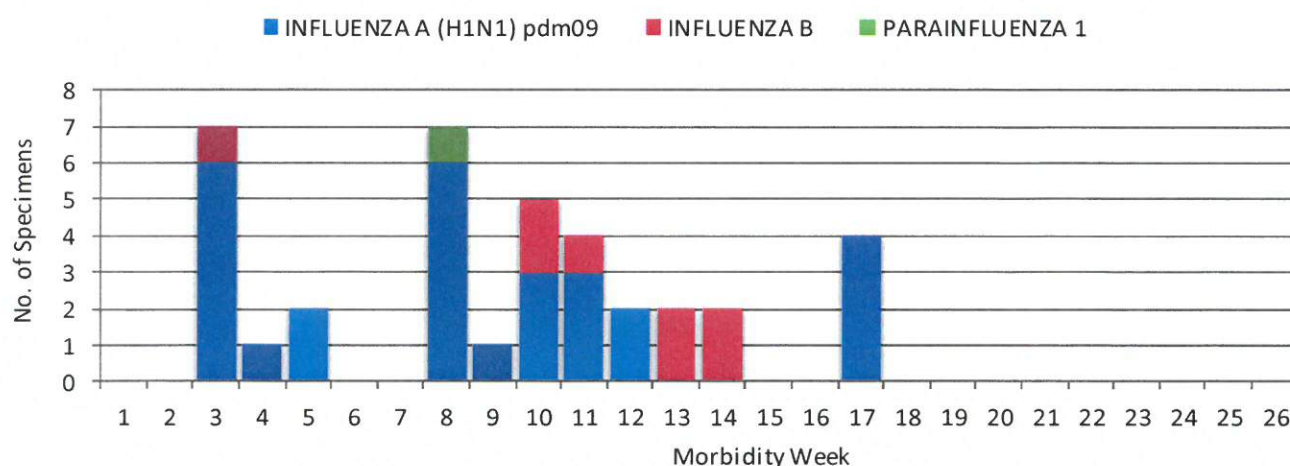


Fig. 7 Number of Specimens Positive for Influenza by Subtype
Philippines, as of July 2, 2016 (n=37)



*NOTE: Case counts reported here do NOT represent the final number and are subject to change after inclusion of delayed reports and review of cases.



Morbidity Week 26: June 26-July 2, 2016

Epidemiology Bureau
 Public Health Surveillance Division

**Table 1. Influenza-like Illness Cases & Deaths by Region
 Philippines, 2016* vs 2015**

Region	Cases			Deaths			
	2016	2015	% Change	2016	CFR (%)	2015	CFR (%)
I	5435	4242	28.1	1	0.02	3	0.07
II	403	857	-53.0	0	0.00	0	0.00
III	1360	1677	-18.9	0	0.00	0	0.00
IV-A	6279	7631	-17.7	0	0.00	0	0.00
IV-B	1262	1129	11.8	1	0.08	0	0.00
V	55	61	-9.8	0	0.00	0	0.00
VI	65	120	-45.8	0	0.00	0	0.00
VII	1089	638	70.7	1	0.09	0	0.00
VIII	4771	2041	133.8	0	0.00	0	0.00
IX	312	883	-64.7	0	0.00	0	0.00
X	4458	6167	-27.7	0	0.00	2	0.03
XI	5447	4526	20.3	1	0.02	13	0.29
XII	6986	13954	-49.9	1	0.01	0	0.00
ARMM	346	165	109.7	0	0.00	0	0.00
CAR	4610	6227	-26.0	0	0.00	0	0.00
CARAGA	5749	4413	30.3	6	0.10	3	0.07
NCR	604	2173	-72.2	0	0.00	0	0.00
Total	49231	56904	-13.5	11	0.02	21	0.04

**Table 2. Weekly Influenza-like Illness Summary Report by Region
 Philippines, as of July 2, 2016**

Region	Morbidity Week				26th Morbidity Week		Cumulative Total	
	22	23	24	25	2016	2015	1st wk to 26th wk	
I	181	130	125	85	8	192	5435	4242
II	4	5	14	5	0	49	403	857
III	25	18	33	6	1	83	1360	1677
IV-A	217	233	221	121	26	272	6279	7631
IV-B	35	36	51	23	5	110	1262	1129
V	3	0	1	0	0	5	55	61
VI	3	4	2	0	0	5	65	120
VII	38	77	53	38	10	30	1089	638
VIII	54	92	42	12	5	75	4771	2041
IX	5	2	0	1	0	29	312	883
X	160	105	144	162	50	211	4458	6167
XI	209	207	177	172	13	161	5447	4526
XII	222	189	166	29	0	495	6986	13954
ARMM	17	9	7	8	6	0	346	165
CAR	128	263	127	46	16	306	4610	6227
CARAGA	166	134	77	76	0	169	5749	4413
NCR	9	10	6	5	1	56	604	2173
Total	1476	1514	1246	789	141	2248	49231	56904



Morbidity Week 26: June 26-July 2, 2016

Epidemiology Bureau
Public Health Surveillance Division

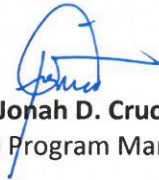
EDITORIAL BOARD


IRMA L. ASUNCION, MD, MHA, CESO IV
Director IV, Epidemiology Bureau


VITO G. ROQUE, JR., MD, PHSAE
Division Chief PHSD

Allan P. Ignacio
Statistician II


June B. Corpuz, RN
PIDSR Program Manager


Jezza Jonah D. Crucena, RN
VPD Program Manager