



Leptospirosis


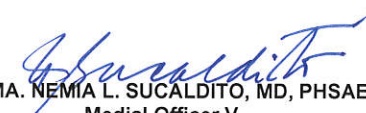


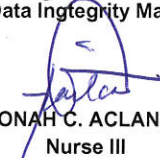

Leptospirosis is an infectious zoonotic bacterial disease with variable manifestations. Disease transmission may be through: contact of skin, especially if abraded, or of mucous membranes with moist soil, vegetation contaminated with urine with infected animals or contaminated water as swimming, wading in flood waters, accidental immersion or occupational abrasion; direct contact with urine or tissues of infected animals.

Table 1. Leptospirosis Cases in the Philippines, 2019* vs 2018

Region	2019		2018		Percent Change in Cases
	Cases	Deaths	Cases	Deaths	
Philippines	3011	314	5116	493	↓ -41

PIDSR Case Definition for Leptospirosis

Suspected Case	<p>A person who developed acute febrile illness with headache, myalgia and prostration associated with any of the following possibly after exposure to infected animals or an environment contaminated with animal urine</p> <ul style="list-style-type: none">• Congunctival suffocation• Meningeal irritation• Anuria or Oliguria and/ or proteinuria• Jaundice• Hemorrhages (from intestines or lungs)• Cardiac arrhythmia or failure• Skin rash
Probable Case	<p>A suspected case in an ongoing epidemic or an environment contaminated with animal urine (e.g. wading in water floods, rice fields, drainage)</p>
Confirmed Case	<p>A suspected case that is laboratory confirmed.</p>

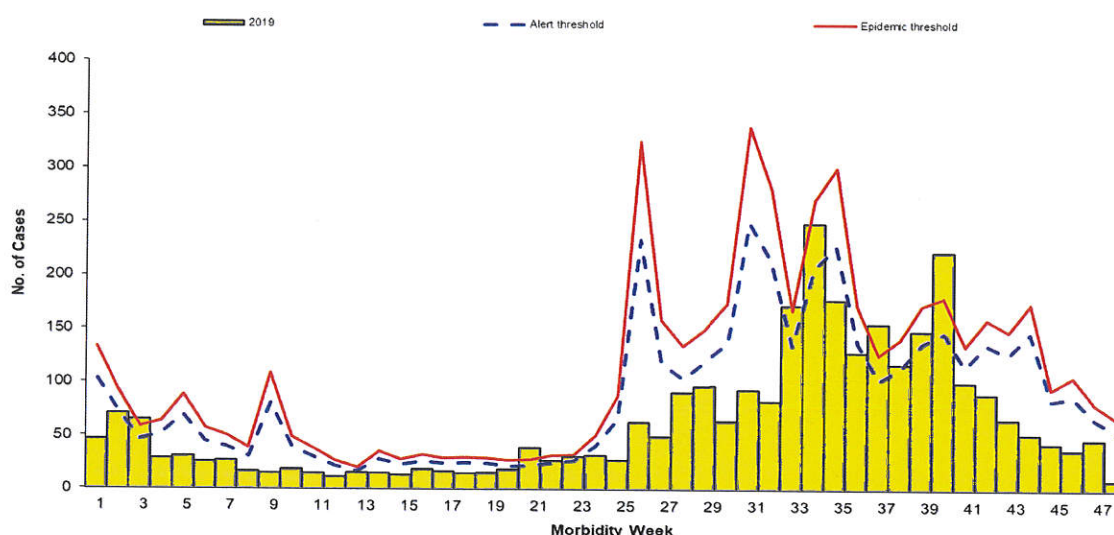
EDITORIAL BOARD
 FERCHITO L. AVELINO, MD, MPH, PHSAE Officer-In-Charge, Epidemiology Bureau
 MA. NEMIA L. SUCALDITO, MD, PHSAE Medical Officer V
 VIKKI CARR DELOS REYES, MD, PHSAE Medical Specialist III
 HERDIE L. HIZON Supervising Health Program Officer EB Data Integrity Manager
 JEZZA JONAH C. ACLAN, RN, MPH Nurse III
 EUNICE P. GUZMAN, RN Nurse II



I. Trend in the Philippines

A total of **3,011** leptospirosis cases were reported nationwide from January 1 to November 30, 2019 [Figure 1]. This is **41%** lower compared to the same time period last year (**5,116**) [Table 2].

**Figure 1. Reported Leptospirosis Cases by Morbidity Week (N=3,011)
Philippines, January 1 to November 30, 2019 Alert and Epidemic Threshold**



II. Geographic Distribution of Cases

Most of the cases were from the following regions: **NCR** (1,125 or 37%), **REGION III** (333 or 11%), **REGION I** (297 or 10%), **REGION IV-A** (294 or 10%), and **REGION VI** (281 or 9%). All regions showed a decrease in the number of reported cases this year except for Region II (68% increase), Region V (24% increase) and CAR (12% increase) (Table 2).

**Table 2. Reported Leptospirosis Cases by Region,
Philippines, November 2019* (N=3,011) vs. November 2018****

Region	Cases						Deaths					
	Cases reported for MW 48 (Nov. 24-Nov. 30)			Cumulative number of cases reported (Jan. 1-Nov. 30)			Number of deaths reported for MW 48 (Nov. 24-Nov. 30)				Cumulative number of deaths reported (Jan. 1-Nov. 30)	
	2018	2019	% Change	2018	2019	% Change	2018	CFR%	2019	CFR%	2018	2019
PHILIPPINES	42	9	↓ 79	5,116	3,011	↓ 41	1	2.38	0	0	493	314
I	2	0	↓ 100	569	297	↓ 48	0	0.00	0	-	69	41
II	0	7	-	115	193	↑ 68	0	-	0	0	13	15
III	6	0	↓ 100	481	333	↓ 31	0	0.00	0	-	34	29
IV-A CALABARZON	1	0	↓ 100	461	294	↓ 36	0	0.00	0	-	47	33
IV-B MIMAROPA	0	0	-	52	23	↓ 56	0	-	0	-	3	3
V	3	1	↓ 67	106	131	↑ 24	0	0.00	0	0	7	11
VI	13	0	↓ 100	640	281	↓ 56	0	0.00	0	-	65	34
VII	3	0	↓ 100	97	51	↓ 47	0	0.00	0	-	15	10
VIII	2	0	↓ 100	81	30	↓ 63	0	0.00	0	-	8	2
IX	1	0	↓ 100	102	35	↓ 66	1	100.00	0	-	10	6
X	0	0	-	45	30	↓ 33	0	-	0	-	7	3
XI	0	0	-	121	74	↓ 39	0	-	0	-	8	8
XII	0	0	-	10	10	→ 0	0	-	0	-	2	0
BARM	0	0	-	9	8	↓ 11	0	-	0	-	1	2
CAR	2	0	↓ 100	69	77	↑ 12	0	0.00	0	-	5	12
CARAGA	1	0	↓ 100	192	19	↓ 90	0	0.00	0	-	6	1
NCR	8	1	↓ 88	1,966	1,125	↓ 43	0	0.00	0	0	193	104

*From period of January 1 to November 30, 2019

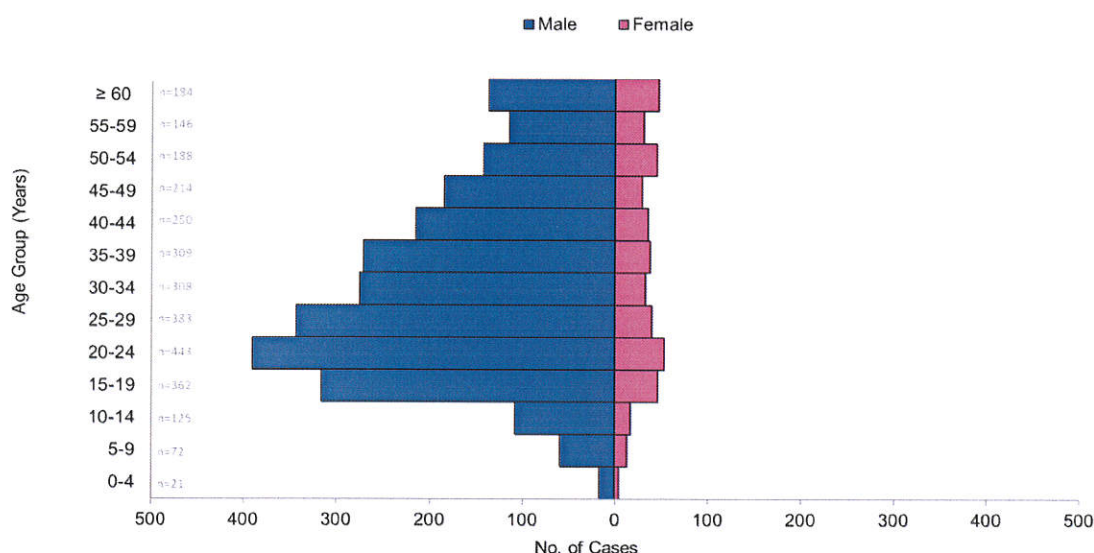
**From period of January 1 to November 30, 2018



III. Profile of Cases

Age of cases ranged from less than 1 year to 88 years (median = 31 years) [Figure 2]. Majority (2,580 or 86%) of cases were male. Most (443 or 15%) of the cases belonged to the age group of 20-24 years old. There were 314 deaths (CFR = 10%).

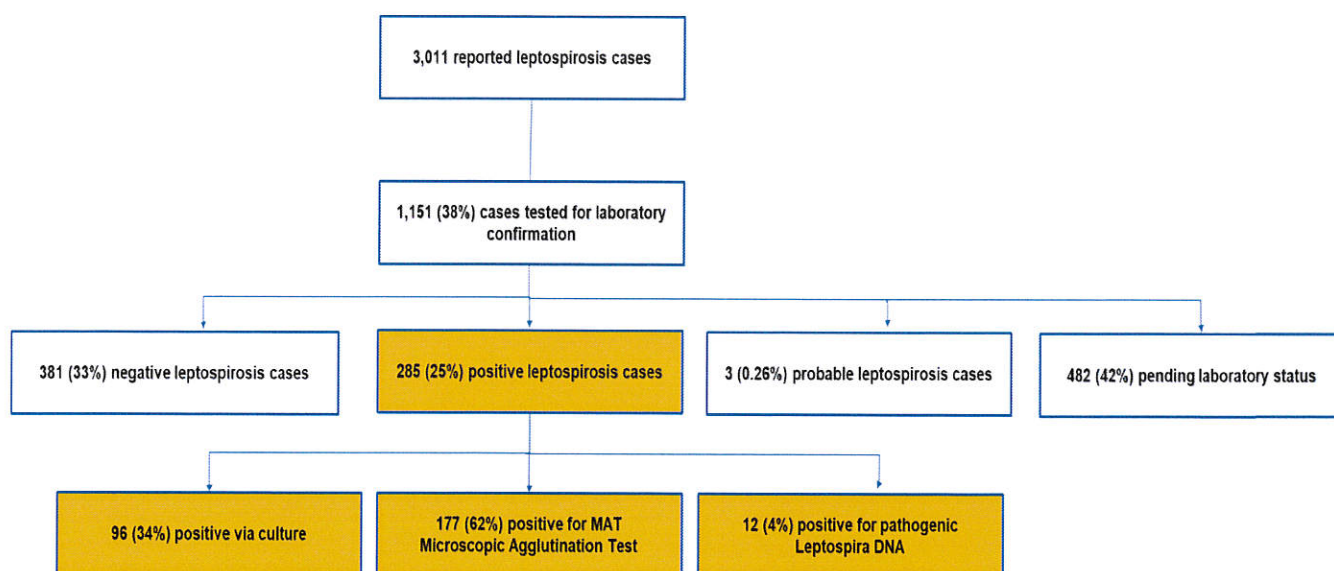
**Figure 2. Reported Leptospirosis Cases by Age Group and Sex (N=3,011)
Philippines, November 2019***



IV. Laboratory Status of Leptospirosis Cases

Out of the 3,011 reported leptospirosis cases, 1,151 cases (38%) were tested for laboratory confirmation. Of these, 285 cases (25%) yielded positive results [Figure 3].

**Figure 3. Laboratory Status of Reported Leptospirosis Cases
Philippines, November 2019***



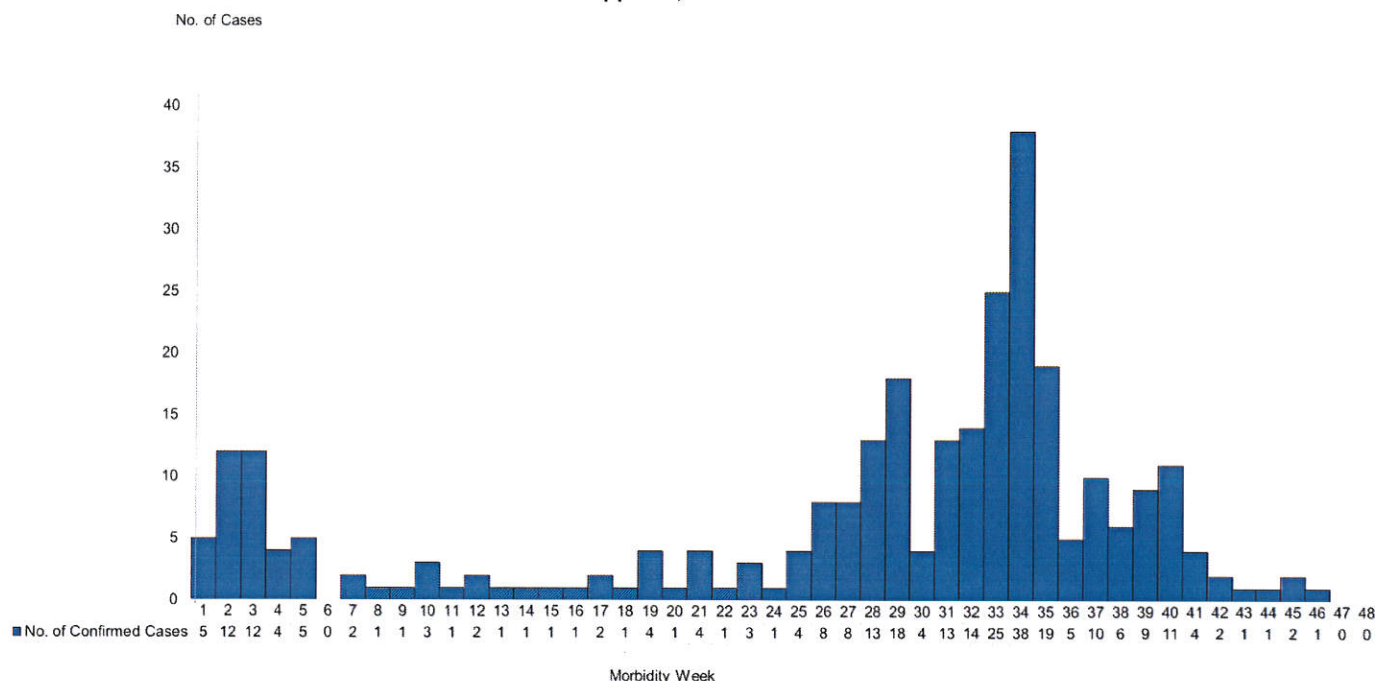
*From period of January 1 to November 30, 2019



V. Profile of Confirmed Leptospirosis Cases

A total of **285** confirmed leptospirosis cases were reported nationwide from January 1 to November 30, 2019. Most of the cases (38 or 13%) were reported on Morbidity 34 [Figure 4].

**Figure 4. Confirmed Leptospirosis by Morbidity Week (n=285)
 Philippines, November 2019***



VI. Geographic Distribution of Confirmed Leptospirosis Cases

Most of the confirmed leptospirosis cases were from **NCR** (172 or 60%) followed by **REGION IV-A** (39 or 14%). A total of sixteen (16) deaths were noted: seven were from NCR (CFR 4%), one from Region II (CFR 7%), one from Region III (CFR 14%), three from Region IV-A (CFR 8%), three from Region VI (CFR 17%) and one from ARMM (CFR 100%).

**Table 3. Confirmed Leptospirosis Cases by Region (n=285)
 Philippines, November 2019**

Region	Cases	Deaths	CFR%
PHILIPPINES	285	16	5.61
I	11	0	0.00
II	14	1	7.14
III	7	1	14.29
IV-A	39	3	7.69
V	15	0	0.00
VI	18	3	16.67
VIII	1	0	0.00
IX	3	0	0.00
X	1	0	0.00
XI	1	0	0.00
ARMM	1	1	100.00
CAR	2	0	0.00
NCR	172	7	4.07

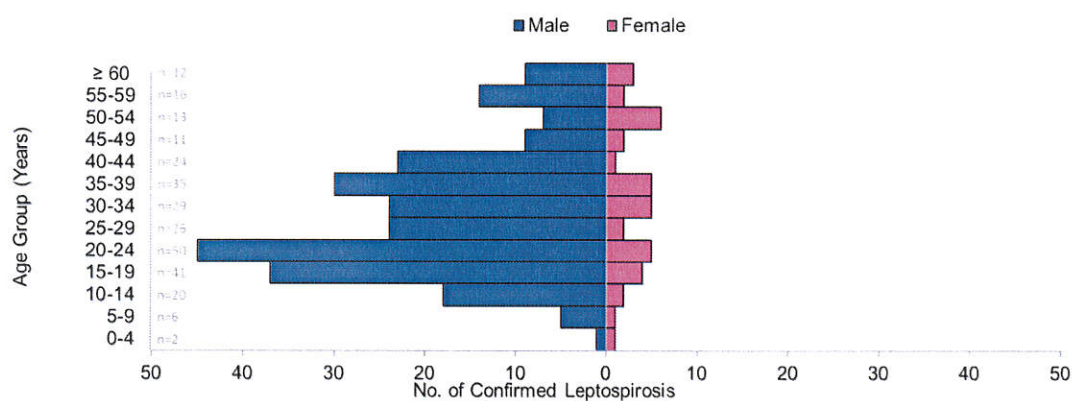
*From period of January 1 to November 30, 2019



VII. Sex and Age Group of Confirmed Leptospirosis Cases

Age of confirmed leptospirosis cases ranged from 2 years to 78 years (median = 29 years). Majority (246 or 86% were male. Most (50 or 18%) of the cases belonged to the age group of 20-24 years old [Figure 5].

**Figure 5. Confirmed Leptospirosis Cases by Age Group and Sex (n=285)
Philippines, November 2019***



*From period of January 1 to November 30, 2019



Figures 6-22. Leptospirosis Alert and Epidemic Thresholds per Region as of November, 2019

Fig. 6 Reported Leptospirosis Cases by Morbidity Week
Region I, as of January 1-November 30, 2019 (n=297)

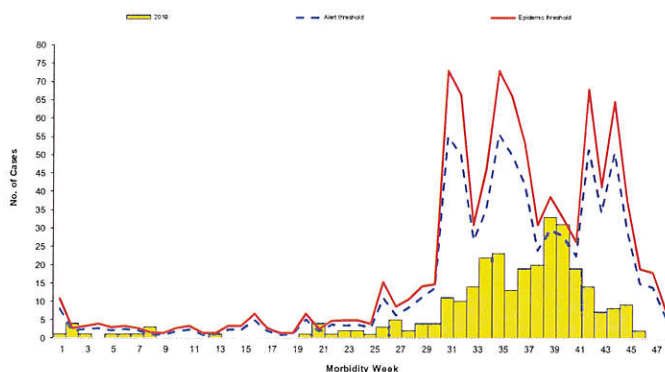


Fig. 7 Reported Leptospirosis Cases by Morbidity Week
Region II, as of January 1-November 30, 2019 (n=193)

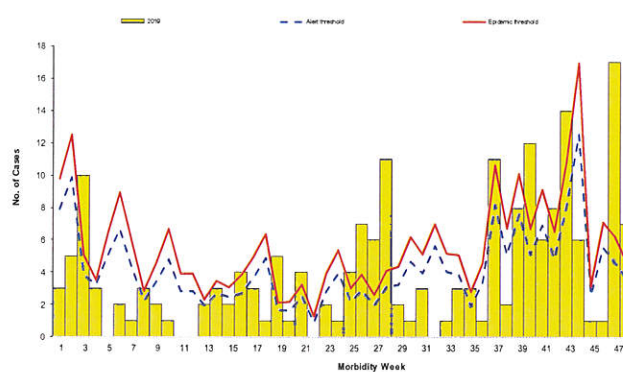


Fig. 8 Reported Leptospirosis Cases by Morbidity Week
Region III, as of January 1-November 30, 2019 (n=333)

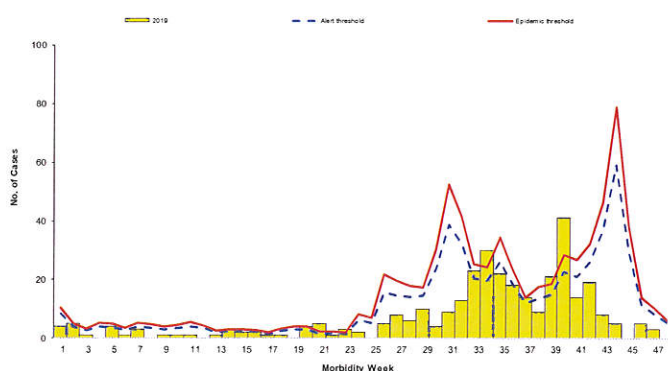


Fig. 9 Reported Leptospirosis Cases by Morbidity Week
Region IV-A, as of January 1-November 30, 2019 (n=294)

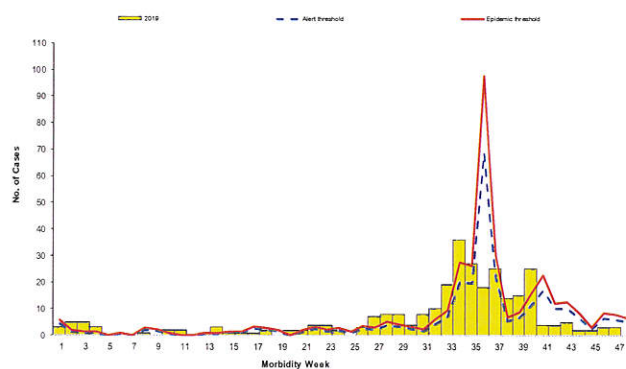


Fig. 10 Reported Leptospirosis Cases by Morbidity Week
Region MIMAROPA, as of January 1-November 30, 2019 (n=23)

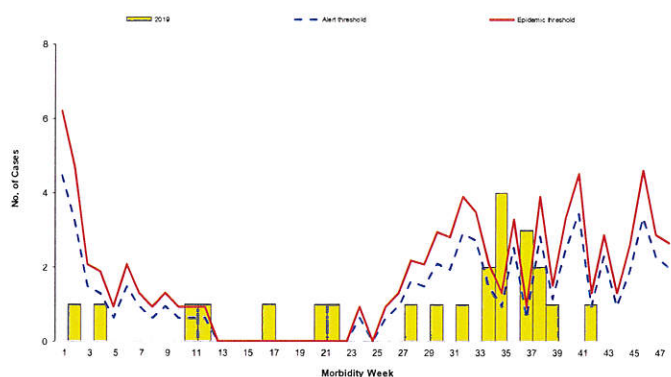
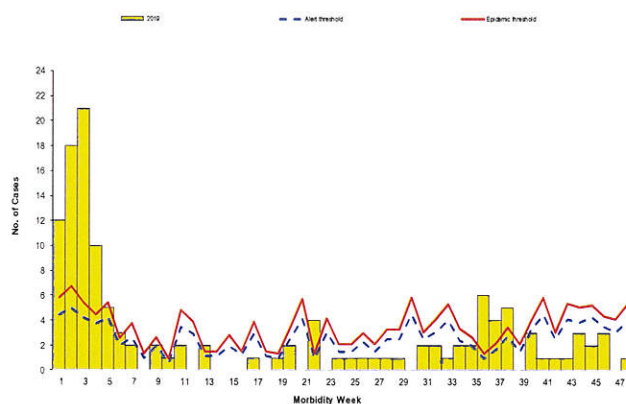


Fig. 11 Reported Leptospirosis Cases by Morbidity Week
Region V, as of January 1-November 30, 2019 (n=131)





Figures 6-22. Leptospirosis Alert and Epidemic Thresholds per Region as of November, 2019

Fig. 12 Reported Leptospirosis Cases by Morbidity Week
Region VI, as of January 1-November 30, 2019 (n=281)

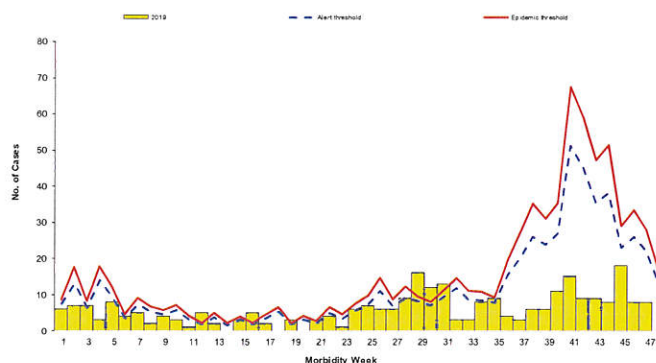


Fig. 13 Reported Leptospirosis Cases by Morbidity Week
Region VII, as of January 1-November 30, 2019 (n=51)

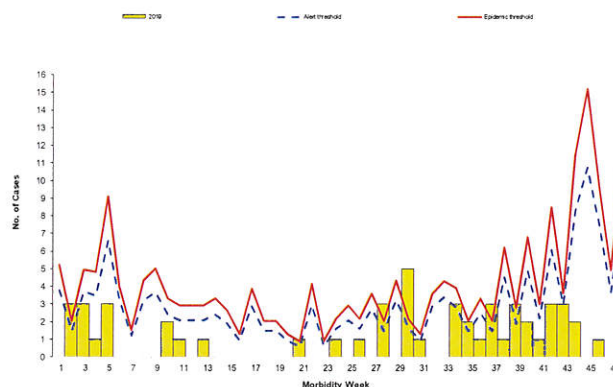


Fig. 14 Reported Leptospirosis Cases by Morbidity Week
Region VIII, as of January 1-November 30, 2019 (n=30)

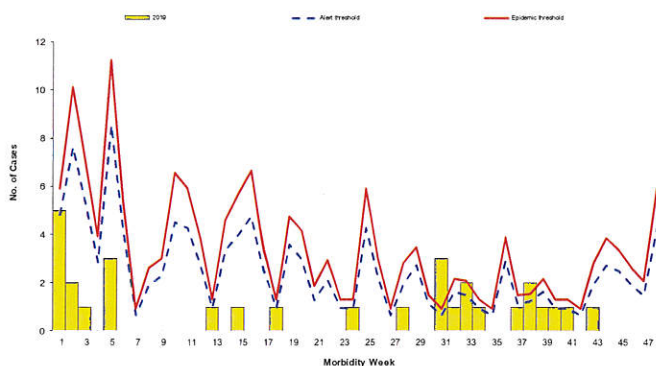


Fig. 15 Reported Leptospirosis Cases by Morbidity Week
Region IX, as of January 1-November 30, 2019 (n=35)

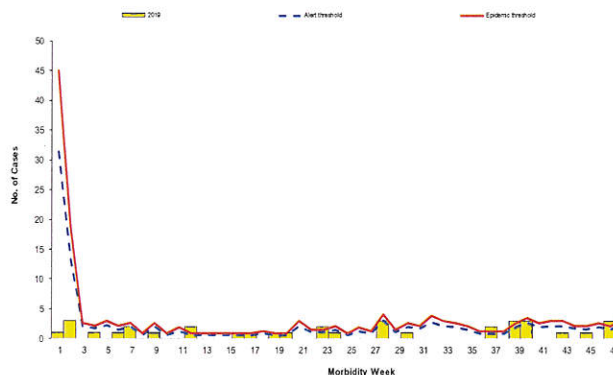


Fig. 16 Reported Leptospirosis Cases by Morbidity Week
Region X, as of January 1-November 30, 2019 (n=30)

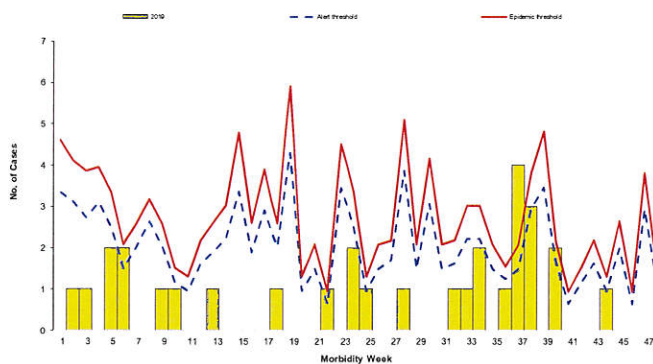
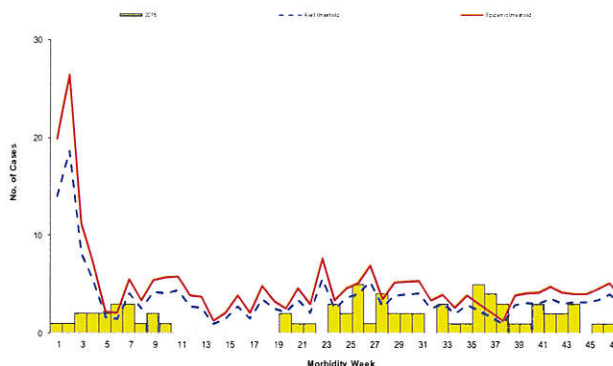


Fig. 17 Reported Leptospirosis Cases by Morbidity Week
Region XI, as of January 1-November 30, 2019 (n=74)





Figures 6-22. Leptospirosis Alert and Epidemic Thresholds per Region as of November, 2019

Fig. 18 Reported Leptospirosis Cases by Morbidity Week
Region XII, as of January 1-November 30, 2019 (n=10)

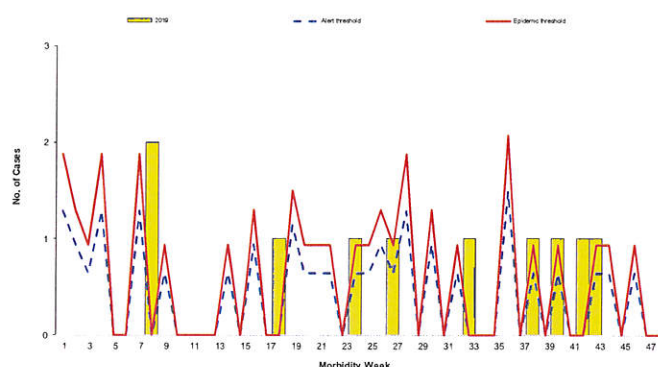


Fig. 19 Reported Leptospirosis Cases by Morbidity Week
Region ARMM, as of January 1-November 30, 2019 (n=8)

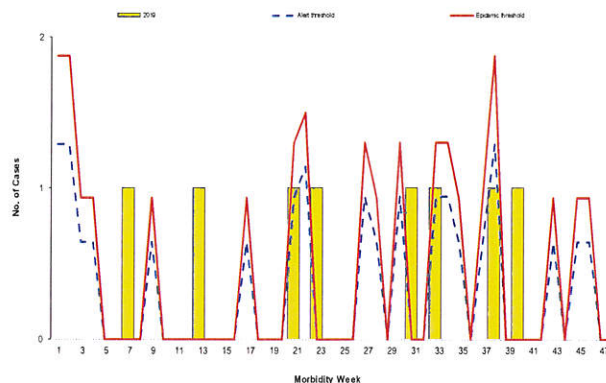


Fig. 20 Reported Leptospirosis Cases by Morbidity Week
Region CAR, as of January 1-November 30, 2019 (n=77)

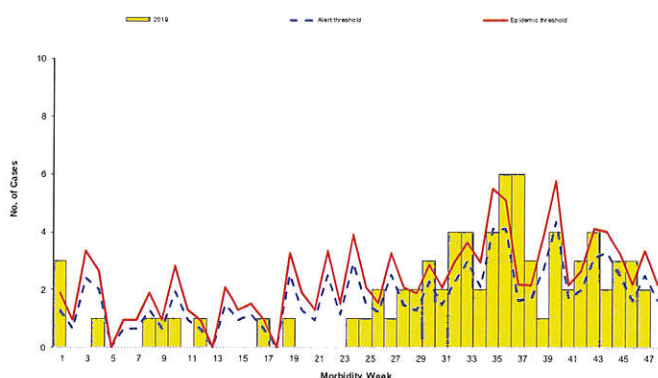


Fig. 21 Reported Leptospirosis Cases by Morbidity Week
Region Caraga, as of January 1-November 30, 2019 (n=19)

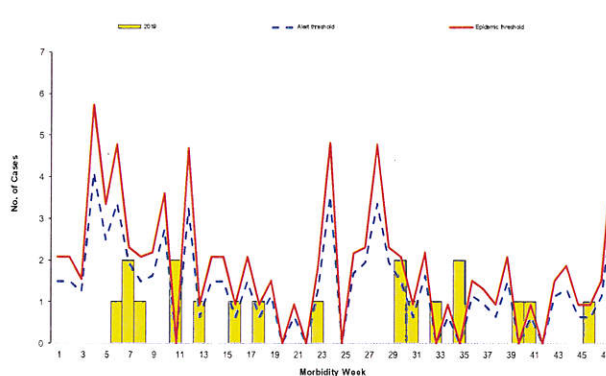
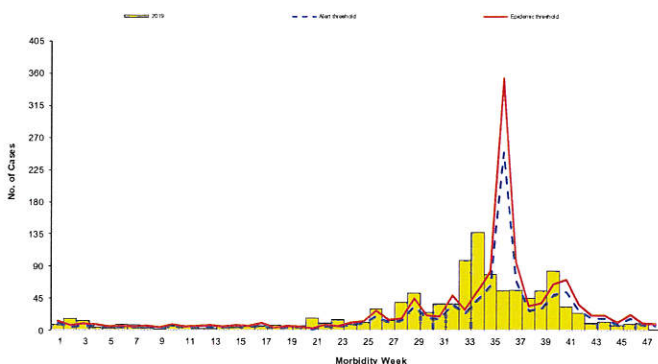


Fig. 22 Reported Leptospirosis Cases by Morbidity Week
Region NCR, as of January 1-November 30, 2019 (n=1,125)





**Annex A. Reported Leptospirosis Cases by Region of Disease Reporting Unit (DRU) and Name of DRUs
 Philippines, as of November 30, 2019 (N=3,011)**

REGION OF DRU	NAME OF DRU	TOTAL
I	BAYAMBANG DISTRICT HOSPITAL	2
	BETHANY HOSPITAL, INC.	1
	CITY OF CANDON HOSPITAL	2
	DAGUPAN CITY HEALTH OFFICE	1
	DON MARIANO C. VERZOSA MEMORIAL HOSPITAL	3
	ILOCOS TRAINING AND REGIONAL MEDICAL CENTER	78
	JESUS NAZARENE GENERAL HOSPITAL	1
	LAOAG CITY GENERAL HOSPITAL	6
	LORMA MEDICAL CENTER	1
	MARIANO MARCOS MEMORIAL HOSPITAL AND MEDICAL CENTER	1
	NAGUILIAN DISTRICT HOSPITAL	2
	NAZARETH GENERAL HOSPITAL, INC.	3
	PANGASINAN PROVINCIAL HOSPITAL	24
	REGION I MEDICAL CENTER	153
	STA. LUCIA DISTRICT HOSPITAL	1
	TAGUDIN GENERAL HOSPITAL & CAPILLARIASIS CENTER	3
01 Total		282
II	ADVENTIST HOSPITAL SANTIAGO CITY, INC.	1
	CAGAYAN VALLEY ADVENTIST HOSPITAL, INC.	1
	CAGAYAN VALLEY MEDICAL CENTER	132
	CAUAYAN DISTRICT HOSPITAL	1
	CAUAYAN MEDICAL SPECIALISTS HOSPITAL	3
	CORADO MEDICAL CLINIC AND HOSPITAL	1
	DIVINE MERCY WELLNESS CENTER	3
	ECHAGUE DISTRICT HOSPITAL	2
	GOV. FAUSTINO N. DY SR. MEMORIAL HOSP.	3
	ISABELA DOCTOR'S GENERAL HOSPITAL	1
	NUEVA VIZCAYA PROVINCIAL HOSPITAL	11
	QUIRINO PROVINCE MEDICAL CENTER	1
	QUIRINO PROVINCIAL HOSPITAL	5
	REGION 2 TRAUMA AND MEDICAL CENTER	3
	REGION II TRAUMA AND MEDICAL CENTER	5
	SALUBRIS MEDICAL CENTER	2
	SOUTHERN ISABELA GENERAL HOSPITAL	3
	SOUTHERN ISABELA MEDICAL CENTER	3
	ST. PAUL HOSPITAL	2
	TUAO DISTRICT HOSPITAL	1
	VETERANS REGIONAL HOSPITAL	3
02 Total		187
III	BAGAC COMMUNITY AND MEDICARE HOSP.	2
	BALIUAG DISTRICT HOSPITAL	1
	BATAAN GENERAL HOSPITAL AND MEDICAL CENTER	33
	BULACAN MEDICAL CENTER	21
	CANDELARIA DISTRICT HOSPITAL	1
	CASIGURAN DISTRICT HOSPITAL	1
	DR. GLORIA LACSON GENERAL HOSPITAL	1
	DR. PAULINO J. GARCIA MEMORIAL RESEARCH AND MEDICAL CENTER	74
	GILBERTO O. TEODORO MEMORIAL HOSPITAL	1
	GONZALES GENERAL HOSPITAL	1
	GRACE GENERAL HOSPITAL	3
	GREENCITY MEDICAL CENTER	2
	HOLY TRINITY HOSPITAL	1
	IMMACULATE CONCEPTION MEDICAL CENTER OF CENTRAL LUZON, INC.	1
	ISAAC & CATALINA MEDICAL CENTER	1
	JAMES L. GORDON MEMORIAL HOSPITAL	3
	JECSONS' MEDICAL CENTER	2
	JOSE B. LINGAD MEMORIAL HOSPITAL	22
	LOVING MOTHER GENERAL HOSPITAL AND DIAGNOSTIC CENTER, INC	3
	M.V. GALLEGU CABANATUAN CITY GEN. HOSP	1
	NUEVA ECIJA DOCTORS HOSPITAL INC.	4



**Annex A. Reported Leptospirosis Cases by Region of Disease Reporting Unit (DRU) and Name of DRUs
 Philippines, as of November 30, 2019 (N=3,011) (continuation)**

REGION OF DRU	NAME OF DRU	TOTAL
III	OSPITAL NG LUNGSOD NG SAN JOSE DEL MONTE	1
	PAMPANGA PREMIER MEDICAL CENTER	1
	PANQUI GENERAL HOSPITAL	4
	PREMIERE MEDICAL CENTER	2
	PRES. RAMON MAGSAYSAY MEMORIAL HOSPITAL	11
	RAFAEL LAZATIN MEMORIAL MEDICAL CENTER	1
	RAMOS GENERAL HOSPITAL	1
	RAYOS-VALENTIN HOSPITAL	3
	RHU QUEZON	1
	RUGAY MATERNITY AND GENERAL HOSPITAL	1
	SACRED HEART MEDICAL CENTER	1
	SAN MIGUEL DISTRICT HOSPITAL	5
	SEÑOR STO. NIÑO HOSPITAL, INC.	1
	STO. DOMINGO DISTRICT HOSPITAL	5
	SUBIC RHU	3
	SUBIC RURAL HEALTH UNIT	1
	TALAVERA GENERAL HOSPITAL (TALAVERA EXTENSION HOSPITAL)	4
	TARLAC PROVINCIAL HOSPITAL	86
	V.L. MAKABALI MEMORIAL HOSPITAL, INC.	2
	03 Total	313
IV-A	ANGONO GENERAL HOSPITAL	1
	ANTIPOLO CITY HOSPITAL SYSTEM - CABADING	4
	ANTIPOLO CITY HOSPITAL SYSTEM ANNEX IV	1
	BACOR DISTRICT HOSPITAL	1
	BAGONG CAINTA MUNICIPAL HOSP.	1
	BATANGAS HEALTH CARE HOSPITAL (Jesus of Nazareth)	3
	BATANGAS MEDICAL CENTER	12
	CLINICA ANTIPOLO HOSPITAL AND WELLNESS CENTER INC.	1
	DE LA SALLE UNIVERSITY MEDICAL CENTER	7
	DR. JOSE P. RIZAL MEMORIAL DISTRICT HOSP.	1
	EMILIO AGUINALDO COLLEGE MEDICAL CENTER	1
	EVANGELISTA MEDICAL AND SPECIALTY HOSPITAL	1
	FIRST FILIPINO SAINT HOSPITAL	1
	GEN. EMILIO AGUINALDO MEMORIAL HOSPITAL	11
	INDANG RHU	1
	LAGUNA PROVINCIAL HOSPITAL	1
	LIPA MEDIX MEDICAL CENTER	1
	MAJAYJAY MEDICARE HOSPITAL	1
	METRO ANTIPOLO HOSPITAL AND MEDICAL CENTER	1
	N. L. VILLA MEMORIAL MEDICAL CENTER	4
	NAIC DOCTORS HOSPITAL, INC.	1
	OSPITAL NG BIÑAN	1
	OSPITAL NG CALACA	1
	OSPITAL NG IMUS	1
	QUEZON MEDICAL CENTER	1
	RPHS ANTIPOLO ANNEX 2	1
	ST. DOMINIC MEDICAL CENTER, INC.	2
	SUPERHEALTH CENTER	2
	UPH- DR. JOSE G. TAMAYO MEDICAL CENTER	1
	04A Total	66



**Annex A. Reported Leptospirosis Cases by Region of Disease Reporting Unit (DRU) and Name of DRUs
 Philippines, as of November 30, 2019 (N=3,011) (continuation)**

REGION OF DRU	NAME OF DRU	TOTAL
MIMAROPA	CUYO DISTRICT HOSPITAL	1
	MA. ESTRELLA GENERAL HOSPITAL	2
	NARRA MUNICIPAL HOSPITAL	1
	OCCIDENTAL MINDORO PROVINCIAL HOSPITAL	4
	ORIENTAL MINDORO CENTRAL DISTRICT HOSPITAL	2
	ORIENTAL MINDORO PROVINCIAL HOSP.	1
	SAN JOSE DISTRICT HOSPITAL	4
	SAN SEBASTIAN DISTRICT HOSPITAL	3
04B Total		18
V	BICOL MEDICAL CENTER	69
	BICOL REGIONAL TRAINING AND TEACHING HOSP.	35
	CAMARINES NORTE PROVINCIAL HOSPITAL	1
	DR. FERNANDO B. DURAN, SR. MEMORIAL HOSP.	6
	EASTERN BICOL MEDICAL CENTER	3
	NAGA IMAGING CENTER COOPERATIVE DOCTORS HOSPITAL	1
	ST. JOHN HOSPITAL, INC.	1
	STA. MARIA JOSEFA FOUNDATION HOSPITAL	5
	USI-MOTHER SETON HOSPITAL	2
05 Total		123
VI	ALEOSAN DISTRICT HOSPITAL	16
	ALFREDO MARAÑON SR. MEMORIAL HOSPITAL	2
	ANGEL SALAZAR MEMORIAL GENERAL HOSPITAL	12
	ANTIQUÉ MEDICAL CENTER	1
	BACOLOD ADVENTIST MEDICAL CENTER	6
	BACOLOD QUEEN OF MERCY HOSPITAL	3
	CADIZ DISTRICT HOSPITAL	3
	CAPIZ DOCTORS' HOSPITAL, INC.	2
	CAPIZ EMMANUEL HOSPITAL, INC.	1
	CORAZON LOCSIN MONTELIBANO MEMORIAL REGIONAL HOSP.	78
	CULASI DISTRICT HOSPITAL	2
	DON JOSE S. MONFORT MEDICAL CENTER EXT. HOSP.	1
	DON SALVADOR BENEDICTO MEMORIAL HOSPITAL	1
	DR. CATALINO GALLEGO NAVA PROVINCIAL HOSPITAL	20
	DR. PABLO O. TORRE SR. MEMORIAL HOSPITAL	1
	DR. RAFAEL S. TUMBOKON MEMO. PROV. HOSP.	1
	GOV. VALERIANO GATUSLAO MEM. DIST. HOSP	1
	HOLY MOTHER OF MERCY HOSPITAL	1
	ILOILO DOCTOR'S HOSPITAL, INC.	7
	ILOILO MISSION HOSPITAL	9
	ILOILO PROVINCIAL HOSPITAL	4
	INAPOY COMMUNITY PRIMARY HOSPITAL	1
	METRO ILOILO HOSPITAL AND MEDICAL CENTER, INC	1
	PANAY HEALTH CARE MPC HOSPITAL	2
	PEDRO L. GINDAP MUNICIPAL HOSPITAL	1
	QUALIMED HOSPITAL ILOILO	1
	RAMON MASA SR. MEMORIAL DISTRICT HOSPITAL	2
	RAMON TABIANA MEMORIAL DISTRICT HOSPITAL	9
	REP. PEDRO TRONO MEMORIAL DISTRICT HOSP.	6
	ROXAS MEMORIAL PROVINCIAL HOSPITAL	4
	SAN CARLOS CITY HOSPITAL	2
	SANTA BARBARA RHU	1
	ST. ANTHONY COLLEGE HOSPITAL	3
	ST. PAUL'S HOSPITAL	5
	TERESITA L. JALANDONI PROVINCIAL HOSP.	13
	THE MEDICAL CITY ILOILO	2
	WEST VISAYAS STATE UNIVERSITY MEDICAL CTR.	21
	WESTERN VISAYAS MEDICAL CENTER	30
	WESTERN VISAYAS SANITARIUM	5
06 Total		281



**Annex A. Reported Leptospirosis Cases by Region of Disease Reporting Unit (DRU) and Name of DRUs
Philippines, as of November 30, 2019 (N=3,011) (continuation)**

REGION OF DRU	NAME OF DRU	TOTAL
VII	ADVENTIST HOSPITAL- CEBU	1
	CEBU CITY MEDICAL CENTER	1
	CEBU DOCTORS' HOSPITAL, INC.	1
	CEBU NORTH GENERAL HOSPITAL	1
	CHONG HUA HOSPITAL	4
	CONG. LAMBERTO L. MACIAS MEMORIAL HOSP.	1
	GOV. CELESTINO GALLARES MEMO. HOSP.	2
	GOV. CELESTINO GALLARES MEMORIAL HOSPITAL	10
	MACTAN DOCTORS HOSPITAL INC	4
	L MISSION GROUP OF HOSP AND HEALTH SERVICE- BOHOL COOPERATIVE HO	1
	NEGROS ORIENTAL PROVINCIAL HOSP.	3
	SILLIMAN UNIVERSITY MEDICAL CENTER	4
	VICENTE SOTTO MEMORIAL MEDICAL CENTER	14
07 Total		47
VIII	ALLIED CARE EXPERTS MEDICAL CENTER	1
	DIVINE WORD HOSPITAL	8
	EASTERN VISAYAS REGIONAL MEDICAL CTR.	3
	LEYTE BAPTIST HOSPITAL, INC.	1
	MOTHER OF MERCY HOSPITAL (NEW)	1
	NORTHERN SAMAR PROVINCIAL HOSPITAL	5
	ORMOC DISTRICT HOSPITAL	3
	REMEDIOS TRINIDAD ROMUALDEZ HOSPITAL	2
	RHU CAIBIRAN	1
08 Total		25
IX	CIUDAD MEDICAL ZAMBOANGA	4
	DR. HENRY M. DE VILLA MEMO. HOSP.	1
	MARGOSATUBIG REGIONAL HOSPITAL	2
	WEST METRO MEDICAL CENTER	1
	ZAMBOANGA CITY MEDICAL CENTER	27
	ZAMBOANGA DOCTOR'S HOSPITAL, INC.	3
	ZAMBOANGA SIBUGAY PROVINCIAL HOSPITAL	1
09 Total		39
X	ADVENTIST MEDICAL CENTER-ILIGAN	1
	BETHEL BAPTIST HOSPITAL, INC.	1
	BUKIDNON PROVINCIAL HOSPITAL MARAMAG	2
	CAGAYAN DE ORO MEDICAL CENTER	1
	CAGAYAN DE ORO POLYMEDIC GENERAL HOSP.	4
	E and R HOSPITAL AND PHARMACY	1
	JR BORJA GENERAL HOSPITAL	7
	MADONNA AND CHILD HOSPITAL	2
	MALAYBALAY POLYMEDIC GENERAL HOSPITAL	3
	MARIA REYNA HOSPITAL	4
	MERCY COMMUNITY HOSPITAL, INC.	1
	NORTHERN MINDANAO MEDICAL CENTER	3
10 Total		30



**Annex A. Reported Leptospirosis Cases by Region of Disease Reporting Unit (DRU) and Name of DRUs
 Philippines, as of November 30, 2019 (N=3,011) (continuation)**

REGION OF DRU	NAME OF DRU	TOTAL
XI	COMPOSTELA VALLEY PROVINCIAL HOSPITAL	2
	DAVAO DOCTORS' HOSPITAL	1
	DAVAO MEDICAL SCHOOL FOUNDATION HOSP.	3
	DAVAO REGIONAL HOSPITAL	18
	DAVAO REGIONAL MEDICAL CENTER	19
	RICARDO LIMSO MEDICAL CENTER, INC.	1
	SAN PEDRO HOSPITAL OF DAVAO CITY, INC.	1
	SOUTHERN PHILIPPINES MEDICAL CENTER (former DAVAO MEDICAL CENTER)	38
11 Total		83
XII	COTABATO REGIONAL AND MEDICAL CENTER	7
	LANDERO CLINIC AND HOSPITAL	1
	SOCSARGEN COUNTY HOSPITAL	1
	ST. LOUIS MEDICAL CLINIC AND HOSPITAL	1
12 Total		10
ARMM	SULU PROVINCIAL HOSPITAL	1
ARMM Total		1
CAR	AMMA JADSAC DISTRICT HOSPITAL	2
	BAGUIO GENERAL HOSPITAL AND MEDICAL CENTER	58
	BAGUIO GENERAL HOSPITAL AND MEDICAL CENTER	2
	CONNER DISTRICT HOSPITAL	3
	FAR NORTH LUZON GEN. HOSP. AND TRAINING CENTER	12
	KALINGA PROVINCIAL HOSPITAL	15
	LUIS HORA MEMORIAL REGIONAL HOSPITAL	2
	PANOPDOPAN DISTRICT HOSPITAL	1
	PINES CITY DOCTORS' HOSPITAL	1
CAR Total		96
CARAGA	ADELA SERRA TY MEMORIAL MEDICAL CENTER	3
	BUNAWAN DISTRICT HOSPITAL	1
	CARAGA REGIONAL HOSPITAL	5
	SURIGAO DEL NORTE PROVINCIAL HOSPITAL	1
CARAGA Total		10
NCR	ACE MEDICAL CENTER	1
	AFP MEDICAL CENTER	3
	ALLIED CARE EXPERTS MEDICAL CENTER QUEZON CITY	1
	AMANG RODRIGUEZ MEDICAL CENTER	109
	BAGONG SILANGAN HEALTH CENTER	1
	BATASAN HILLS SUPER HEALTH CENTER	1
	CAPITOL MEDICAL CENTER, INC.	3
	CARDINAL SANTOS MEDICAL CENTER	2
	CENTRAL BICUTAN (OSANO)	1
	COMMONWEALTH HOSPITAL AND MEDICAL CENTER	2
	DE LOS SANTOS MEDICAL CENTER	2
	DR. JOSE FABELLA MEMORIAL HOSPITAL	3
	DR. JOSE N. RODRIGUEZ MEMORIAL HOSP.	41
	DR. VICTOR R. POTENCIANO MEDICAL CENTER	4
	E. RODRIGUEZ HEALTH CENTER	1
	EAST AVENUE MEDICAL CENTER	225
	FE DEL MUNDO MEDICAL CENTER	1
	FEU-NRMF-MEDICAL CENTER	1
	GAT ANDRES BONIFACIO MEMORIAL MED. CTR.	11
	JOSE R. REYES MEMORIAL MEDICAL CTR.	31
	JUSTICE JOSE ABAD SANTOS MOTHER AND CHILD HOSPITAL (NEW)	2
	LAS PIÑAS DOCTORS' HOSPITAL, INC.	2
	LAS PIÑAS GEN. HOSP. & SATELLITE TRAUMA CENTER	92
	M.H. PEDRO HEALTH CENTER	1
	MAKATI MEDICAL CENTER	2
	MANDALUYONG CITY MEDICAL CENTER	4
	MCU-FDT MEDICAL FOUNDATION HOSP.	2



**Annex A. Reported Leptospirosis Cases by Region of Disease Reporting Unit (DRU) and Name of DRUs
 Philippines, as of November 30, 2019 (N=3,011) (continuation)**

REGION OF DRU	NAME OF DRU	TOTAL
NCR	MEDICAL CENTER PARAÑAQUE, INC.	1
	METROPOLITAN MEDICAL CENTER	1
	NATIONAL CHILDREN'S HOSPITAL	26
	NATIONAL KIDNEY AND TRANSPLANT INSTITUTE	263
	NODADO GENERAL HOSPITAL CAMARIN	1
	NOVALICHES DISTRICT HOSPITAL	1
	OSPITAL NG MAKATI	25
	OSPITAL NG MALABON	2
	OSPITAL NG MAYNILA MEDICAL CENTER	3
	OSPITAL NG MUNTINLUPA	2
	OSPITAL NG PARAÑAQUE	13
	OSPITAL NG TONDO	2
	PASAY CITY GENERAL HOSPITAL	2
	PASCUAL GENERAL HOSPITAL	1
	PASIG CITY CHILDREN'S HOSPITAL	3
	PHILIPPINE CHILDREN'S MEDICAL CENTER	10
	PHILIPPINE HEART CENTER	2
	QUEZON CITY GENERAL HOSPITAL	6
	QUIRINO MEMORIAL MEDICAL CENTER	104
	RESEARCH INSTITUTE FOR TROPICAL MEDICINE	18
	RIZAL MEDICAL CENTER	20
	SAN JUAN DE DIOS EDUCATIONAL FOUNDATION, INC.	3
	SAN JUAN MEDICAL CENTER	1
	SAN LAZARO HOSPITAL	177
	SAN LORENZO RUIZ WOMEN'S HOSPITAL	5
	SAUYO HEALTH CENTER	1
	ST. MARTIN DE PORRES CHARITY HOSPITAL	4
	ST. LUKE'S MEDICAL CENTER	4
	ST. LUKE'S MEDICAL CENTER-GLOBAL CITY	2
	STA. ANA HOSPITAL (NEW)	5
	TONDO MEDICAL CENTER	81
	UERM MEMORIAL MEDICAL CENTER	3
	UNIVERSITY OF PERPETUAL HELP RIZAL MEDICAL CENTER, INC.	3
	UP-PHILIPPINE GENERAL HOSPITAL	38
	USUSAN HEALTH CENTER	1
	VALENZUELA MEDICAL CENTER	17
NCR Total		1400
PHILIPPINES		3011