



Dengue Disease Surveillance Report



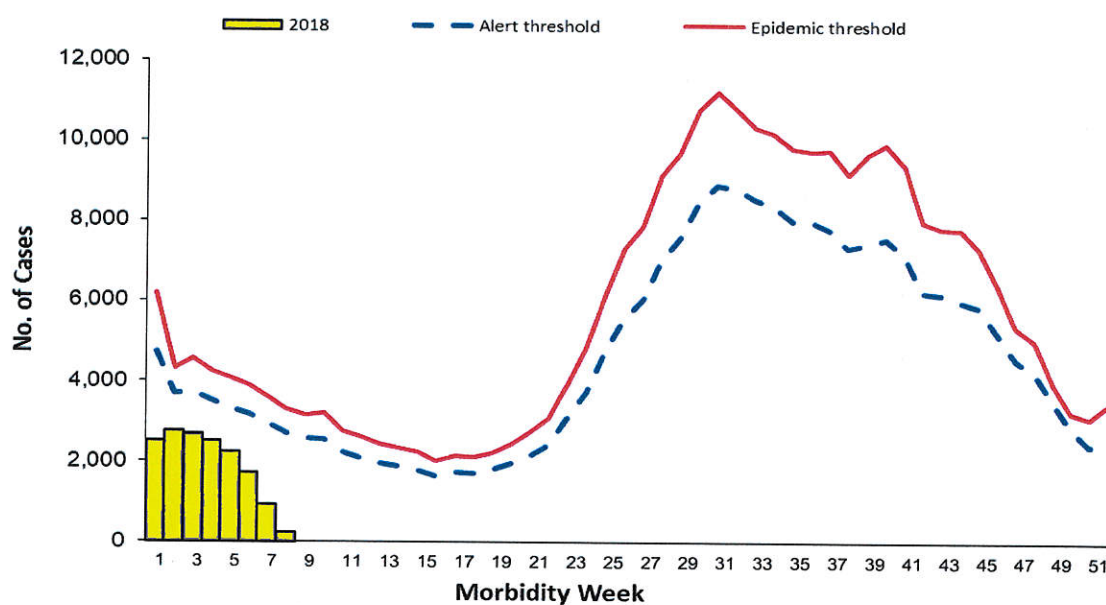
January 1 – February 24, 2018

Philippine Integrated Disease Surveillance and Response
Public Health Surveillance Division

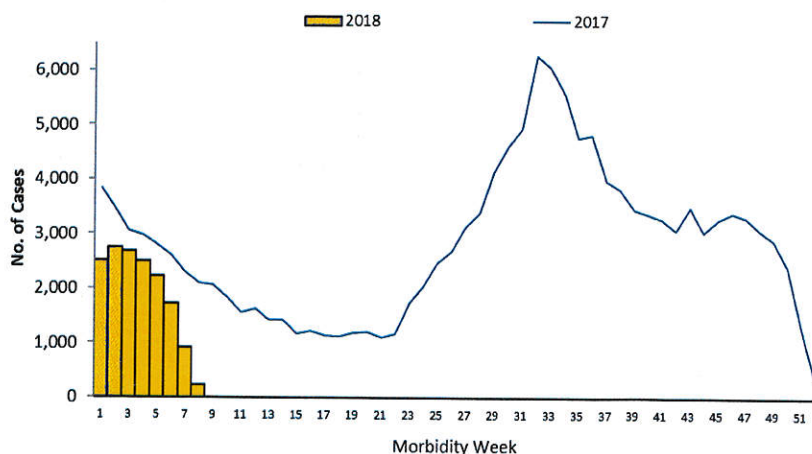
Trend in the Philippines

A total of **15,599** dengue cases were reported nationwide from January 1 to February 24, 2018 (Figures 1&2). This is **32.56%** lower compared to the same time period last year (**23,131**).

**Fig. 1 Reported Dengue Cases by Morbidity Week
Philippines, January 1 – February 24, 2018* (N=15,599)**



**Fig. 2 Reported Dengue Cases by Morbidity
Week Philippines, January 1- February 24, 2018
2018* vs 2017 (N=15,599)**



**Table 1. Reported Dengue Case Fatality Rate by
Morbidity Week, January 1- February 24, 2018*
2018* vs 2017**

Morbidity Week	Cases 2018	Deaths 2018	CFR (%)	Cases 2017	Deaths 2017	CFR (%)
1	2,520	17	0.67	3,830	26	0.68
2	2,755	12	0.44	3,458	26	0.75
3	2,696	14	0.52	3,051	17	0.56
4	2,501	9	0.36	2,978	17	0.57
5	2,236	4	0.18	2,807	18	0.64
6	1,735	12	0.69	2,607	17	0.65
7	924	6	0.65	2,293	11	0.48
8	232	0	0.00	2,107	8	0.38
Total	15,599	74	0.47	23,131	140	0.61

*NOTE: Case counts reported here do NOT represent the final number and are subject to change after inclusion of delayed reports and review of cases. All 2017 data reflects partial data only of all Regions.



Dengue Disease Surveillance Report



January 1 – February 24, 2018

Philippine Integrated Disease Surveillance and Response
Public Health Surveillance Division

Geographic Distribution

Figures 3 and 4 shows that majority of the cases were from the following regions: **Region IVA** (21.62%), **NCR** (17.45%), **Region III** (16.04%), **Region I** (6.44%) and **Region VII** (6.06%). The provinces with the highest number of cases were from **Metro Manila** (17.45%), **Cavite** (8.69%), **Pampanga** (5.81%), **Pangasinan** (5.13%), and **Cebu** (4.62%).

Fig. 3 Reported Dengue Cases by Region
Philippines, 2018* vs 2017 (N=15,599)

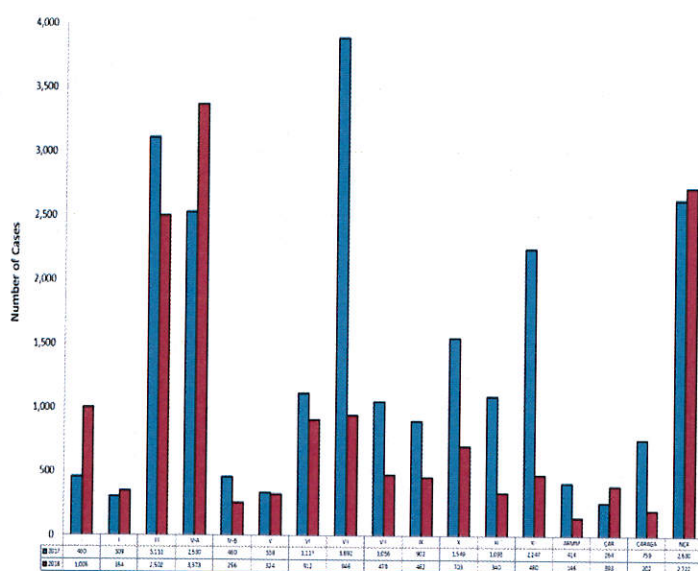


Fig. 4 Reported Dengue Cases by Province
Philippines, January 1 – February 24, 2018* (N=15,599)

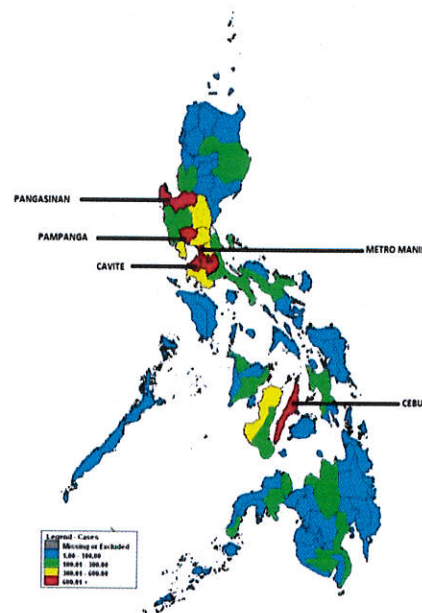


Table 2. Reported Dengue Cases by Region
Philippines, 2018* vs 2017

Region	Cases			Deaths			
	2018	2017	% Change	2018	CFR (%)	2017	CFR (%)
I	1,005	460	↑ 118.48	8	0.80	2	0.43
II	354	309	↑ 14.56	1	0.28	2	0.65
III	2,502	3,111	↓ -19.58	8	0.32	12	0.39
IV-A	3,373	2,530	↑ 33.32	17	0.50	13	0.51
MIMAROPA	256	460	↓ -44.35	1	0.39	0	0.00
V	324	338	↓ -4.14	4	1.23	2	0.59
VI	912	1,117	↓ -18.35	5	0.55	9	0.81
VII	946	3,892	↓ -75.69	5	0.53	41	1.05
VIII	479	1,056	↓ -54.64	3	0.63	4	0.38
IX	462	902	↓ -48.78	3	0.65	6	0.67
X	703	1,549	↓ -54.62	5	0.71	4	0.26
XI	340	1,093	↓ -68.89	1	0.29	10	0.91
XII	480	2,247	↓ -78.64	0	0.00	15	0.67
ARMM	146	414	↓ -64.73	1	0.68	4	0.97
CAR	393	264	↑ 48.86	2	0.51	1	0.38
CARAGA	202	759	↓ -73.39	1	0.50	4	0.53
NCR	2,722	2,630	↑ 3.50	9	0.33	11	0.42
Total	15,599	23,131	↓ -32.56	74	0.47	140	0.61

Table 3. Reported Dengue Cases by Region and Case Classification
Philippines, (N=15,599)

Region	Case Classification		
	Confirmed	Probable	Suspect
I	0	508	497
II	0	37	317
III	3	1,288	1,211
IV-A	1	1,158	2,214
MIMAROPA	0	131	125
V	1	70	253
VI	0	197	715
VII	0	291	655
VIII	0	130	349
IX	6	163	293
X	0	51	652
XI	5	21	314
XII	0	91	389
ARMM	0	42	104
CAR	1	219	173
CARAGA	0	0	202
NCR	11	919	1,792
Total	28	5,316	10,255

*NOTE: Case counts reported here do NOT represent the final number and are subject to change after inclusion of delayed reports and review of cases. All 2017 data reflects partial data only of all Regions.



Dengue Disease Surveillance Report



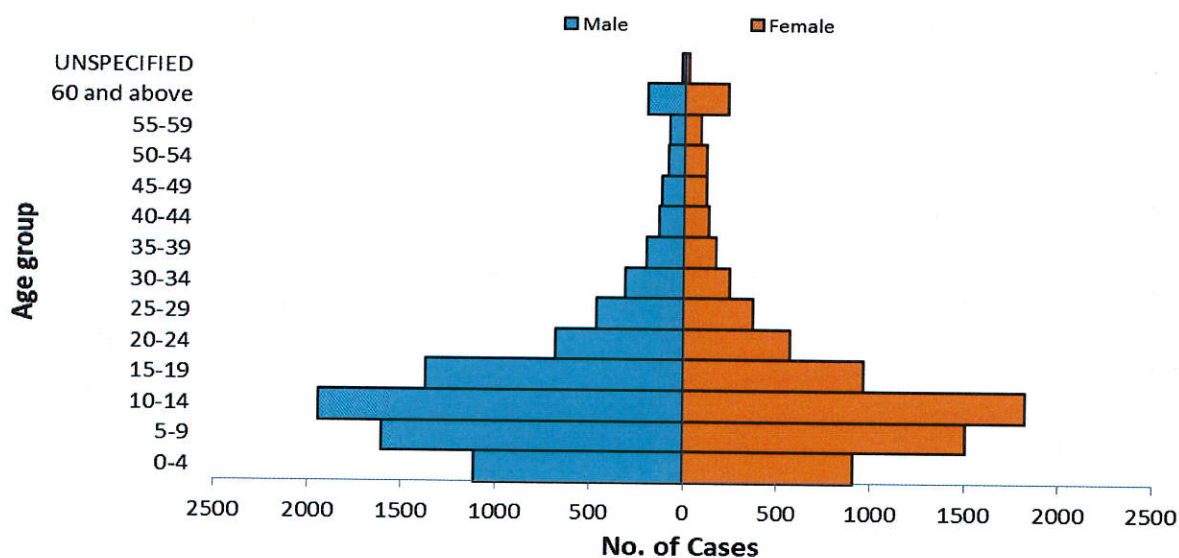
January 1 – February 24, 2018

Philippine Integrated Disease Surveillance and Response
Public Health Surveillance Division

Profile of Cases

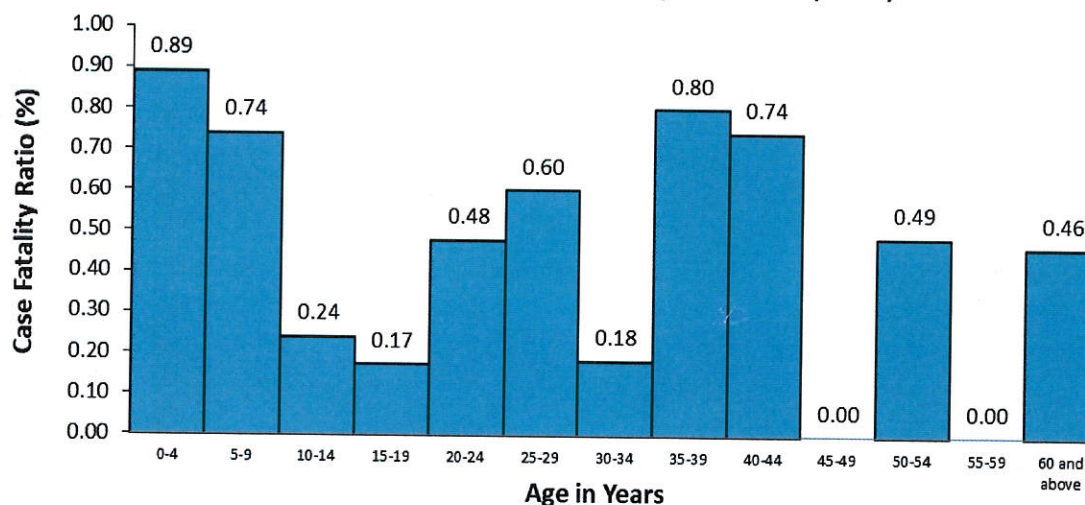
Ages of cases ranged from less than 1 month to 99 years old (median = 13 years). Most of the cases were male (53.51%). 24.12% of the cases belonged to the 10-14 years age group.

Fig.5 Reported Dengue Cases by Age Group and Sex
Philippines, January 1 – February 24, 2018* (N= 15,599)



There were 74 deaths (CFR = 0.47%) reported from January 1-February 24, 2018. This is lower compared to the same period last year, 140 deaths (CFR=0.61%) (Table 1). The age group that has the highest CFR is the 0-4 years old (0.89%) age group (Figure 6).

Fig. 6 Reported Dengue Case Fatality Rate (CFR) by Age Group,
Philippines, January 1 – February 24, 2018* (n=74)



*NOTE: Case counts reported here do NOT represent the final number and are subject to change after inclusion of delayed reports and review of cases. All 2017 data reflects partial data only of all Regions.




Dengue Disease Surveillance Report



January 1 – February 24, 2018


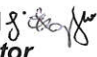
Philippine Integrated Disease Surveillance and Response
Public Health Surveillance Division

Editorial Board


IRMA L. ASUNCION, MD, MHA, CESO III
Director IV, Epidemiology Bureau


GENESIS MAY J. SAMONTE, MD, MSc, PHSAE
OIC-Division Chief, PHSD


MARIEL A. DEJESA, MD, MPM
Medical Officer IV, PHSD


JUNE CANTATA B. CORPUZ, RN 
Nurse III, PIDSR National Coordinator


JEZZA JONAH D. CRUCENA, RN 
Nurse III, VPDS National Coordinator