



Dengue Disease Surveillance Report



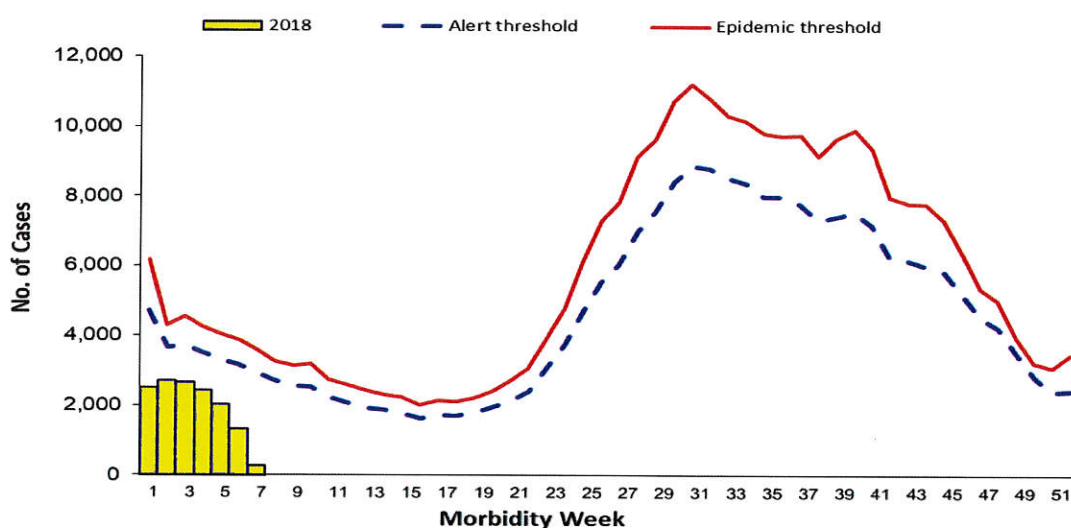
January 1 – February 17, 2018

Philippine Integrated Disease Surveillance and Response
Public Health Surveillance Division

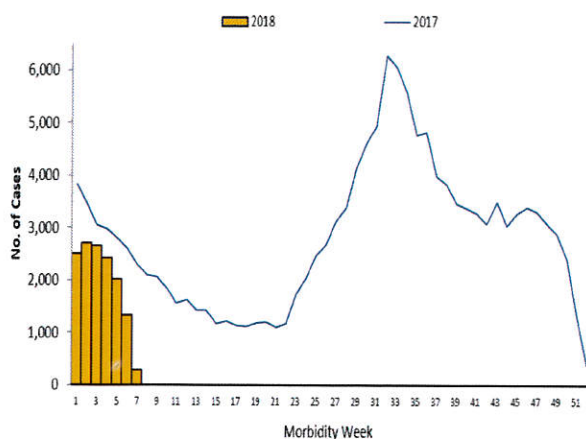
Trend in the Philippines

A total of **13,898** dengue cases were reported nationwide from January 1 to February 17, 2018 (Figures 1&2). This is **33.89%** lower compared to the same time period last year (**21,024**).

**Fig. 1 Reported Dengue Cases by Morbidity Week
Philippines, January 1 – February 17, 2018* (N=13,898)**



**Fig. 2 Reported Dengue Cases by Morbidity
Week Philippines, January 1- February 17, 2018
2018* vs 2017 (N=13,898)**



**Table 1. Reported Dengue Case Fatality Rate by
Morbidity Week, January 1- February 17, 2018*
2018* vs 2017**

Morbidity Week	Cases 2018	Deaths 2018	CFR (%)	Cases 2017	Deaths 2017	CFR (%)
1	2,495	17	0.68	3,830	26	0.68
2	2,700	12	0.44	3,458	26	0.75
3	2,659	14	0.53	3,051	17	0.56
4	2,422	9	0.37	2,978	17	0.57
5	2,020	3	0.15	2,807	18	0.64
6	1,325	10	0.75	2,607	17	0.65
7	277	0	0.00	2,293	11	0.48
Total	13,898	65	0.47	21,024	132	0.63

*NOTE: Case counts reported here do NOT represent the final number and are subject to change after inclusion of delayed reports and review of cases. All 2017 data reflects partial data only of all Regions.



Dengue Disease Surveillance Report



January 1 – February 17, 2018

Philippine Integrated Disease Surveillance and Response
Public Health Surveillance Division

Geographic Distribution

Figures 3 and 4 shows that majority of the cases were from the following regions: **Region IVA** (21.64%), **NCR** (18.83%), **Region III** (17.18%), **Region I** (6.71%) and **Region VII** (5.89%). The provinces with the highest number of cases were from **Metro Manila** (18.83%), **Cavite** (9.03%), **Pampanga** (6.17%), **Pangasinan** (5.37%), and **Cebu** (4.51%).

Fig. 3 Reported Dengue Cases by Region
Philippines, 2018* vs 2017 (N=13,898)

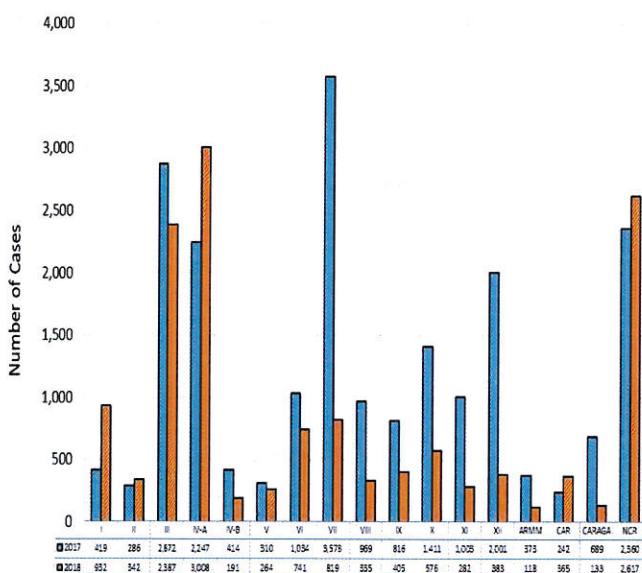


Fig. 4 Reported Dengue Cases by Province
Philippines, January 1 – February 17, 2018* (N=13,898)

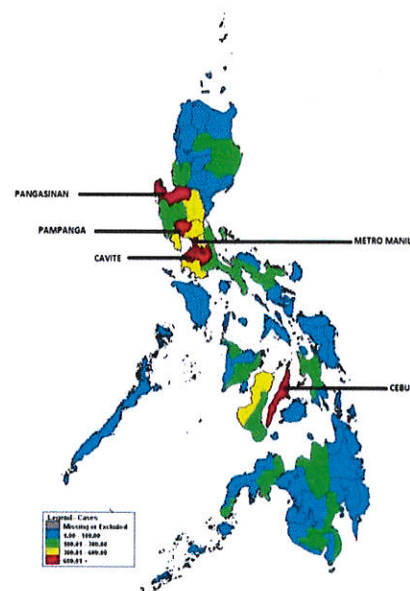


Table 2. Reported Dengue Cases by Region
Philippines, 2018* vs 2017

Region	Cases			Deaths			
	2018	2017	% Change	2018	CFR (%)	2017	CFR (%)
I	932	419	↑ 122.43	6	0.64	2	0.48
II	342	286	↓ 19.58	1	0.29	2	0.70
III	2,387	2,872	↓ -16.89	8	0.34	11	0.38
IV-A	3,008	2,247	↑ 33.87	17	0.57	13	0.58
MIMAROPA	191	414	↓ -53.86	1	0.52	0	0.00
V	264	310	↓ -14.84	3	1.14	2	0.65
VI	741	1,034	↓ -28.34	3	0.40	9	0.87
VII	819	3,578	↓ -77.11	5	0.61	39	1.09
VIII	335	969	↓ -65.43	2	0.60	4	0.41
IX	405	816	↓ -50.37	3	0.74	5	0.61
X	576	1,411	↓ -59.18	4	0.69	4	0.28
XI	282	1,003	↓ -71.88	1	0.35	9	0.90
XII	383	2,001	↓ -80.86	0	0.00	14	0.70
ARMM	118	373	↓ -68.36	1	0.85	3	0.80
CAR	365	242	↑ 50.83	1	0.27	1	0.41
CARAGA	689	242	↓ -80.70	0	0.00	4	0.58
NCR	2,617	2,360	↑ 10.89	9	0.34	10	0.42
Total	13,898	21,024	↓ -33.89	65	0.47	132	0.63

Table 3. Reported Dengue Cases by Region and Case
Classification Philippines, (N=13,898)

Region	Case Classification		
	Confirmed	Probable	Suspect
I	0	468	464
II	0	34	308
III	2	1,231	1154
IV-A	1	1,056	1951
MIMAROPA	0	94	97
V	1	68	195
VI	0	167	574
VII	0	239	580
VIII	0	96	239
IX	6	156	243
X	0	46	530
XI	2	14	266
XII	0	73	310
ARMM	0	42	76
CAR	1	194	170
CARAGA	0	0	133
NCR	9	921	1687
Total	22	4,899	8,977

*NOTE: Case counts reported here do NOT represent the final number and are subject to change after inclusion of delayed reports and review of cases. All 2017 data reflects partial data only of all Regions.



Dengue Disease Surveillance Report



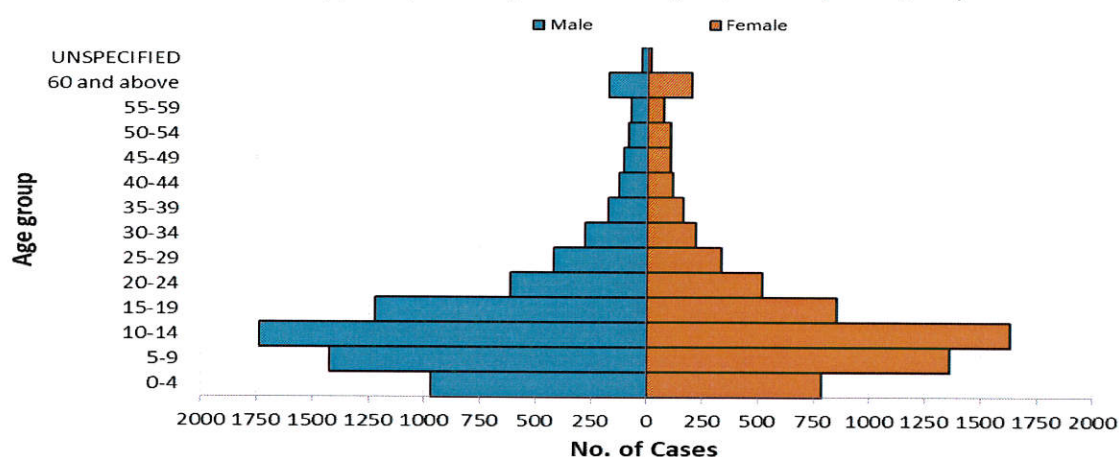
January 1 – February 17, 2018

Philippine Integrated Disease Surveillance and Response
Public Health Surveillance Division

Profile of Cases

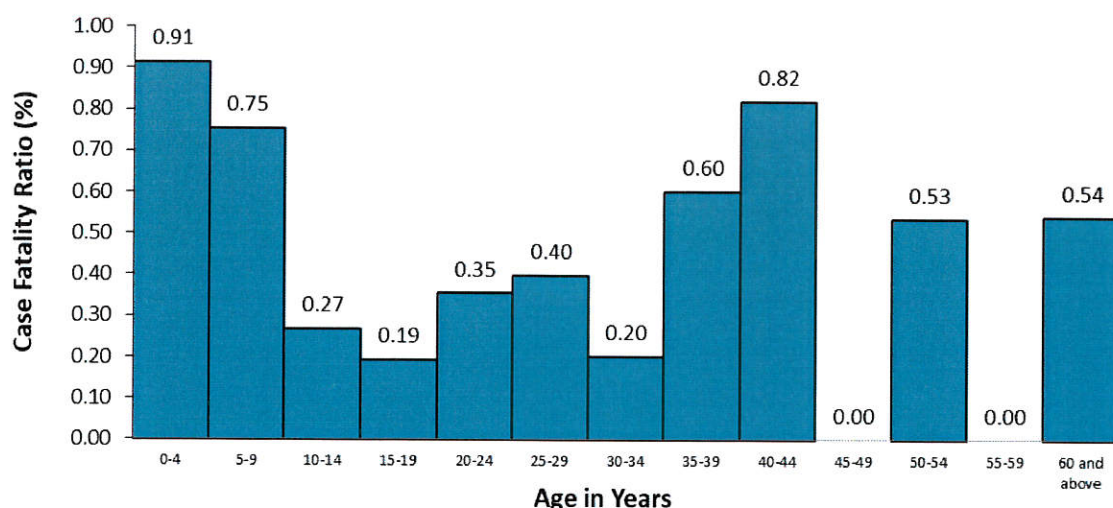
Ages of cases ranged from less than 1 month to 99 years old (median = 13 years). Majority of cases were male (53.3%). 24.2% of the cases belonged to the 10-14 years age group.

**Fig.5 Reported Dengue Cases by Age Group and Sex
Philippines, January 1 – February 17, 2018* (N= 13,898)**



There were 65 deaths (CFR = 0.47%) reported from January 1-February 17, 2018. This is lower compared to the same period last year, 132 deaths (CFR=.63%) (Table 1). The age group that has the highest CFR is the 0-4 years old (0.91%) age group (Figure 6).

**Fig. 6 Reported Dengue Case Fatality Rate (CFR) by Age Group,
Philippines, January 1 – February 17, 2018* (n=65)**



**NOTE: Case counts reported here do NOT represent the final number and are subject to change after inclusion of delayed reports and review of cases. All 2017 data reflects partial data only of all Regions.*



Dengue Disease Surveillance Report



January 1 – February 17, 2018


Philippine Integrated Disease Surveillance and Response
Public Health Surveillance Division

Editorial Board


IRMA L. ASUNCION, MD, MHA, CESO IV
Director IV, Epidemiology Bureau


GENESIS MAY J. SAMONTE, MD, MSc, PHSAE
OIC-Division Chief, PHSD


MARIEL A. DEJESA, MD, MPM
Medical Officer IV, PHSD


JUNE CANTATA B. CORPUZ, RN
Nurse III, PIDS National Coordinator


JEZA JONAH D. CRUCENA, RN
Nurse III, VPDS National Coordinator

*NOTE: Case counts reported here do NOT represent the final number and are subject to change after inclusion of delayed reports and review of cases. All 2017 data reflects partial data only of all Regions.