



January 1 – March 4, 2017

Epidemiology Bureau
Public Health Surveillance Division

Trend in the Philippines

This report summarizes PIDSR ILI surveillance activities nationwide. A total of **8,417** Influenza-like Illness cases were reported nationwide from January 1 to March 4, 2017. This is **68.1%** lower compared to the same time last year (**26,386**).

Fig. 1 Distribution of Influenza-like Illness Cases by Morbidity Week
Philippines, as March 4, 2017 (N=8,417)

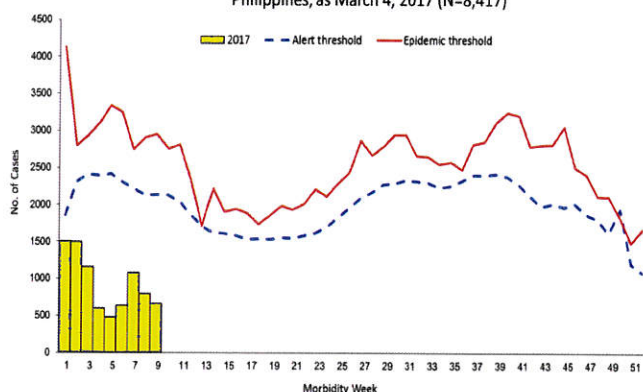
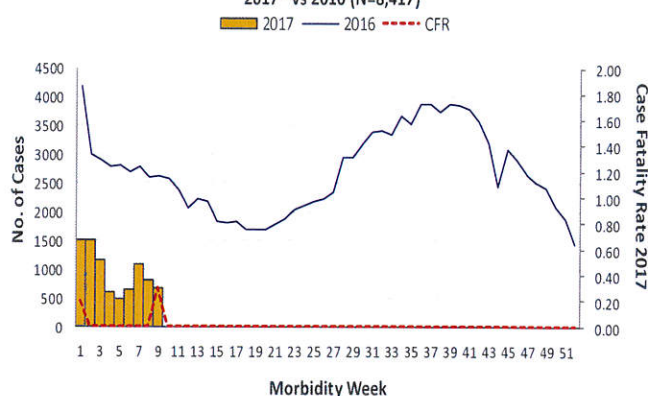


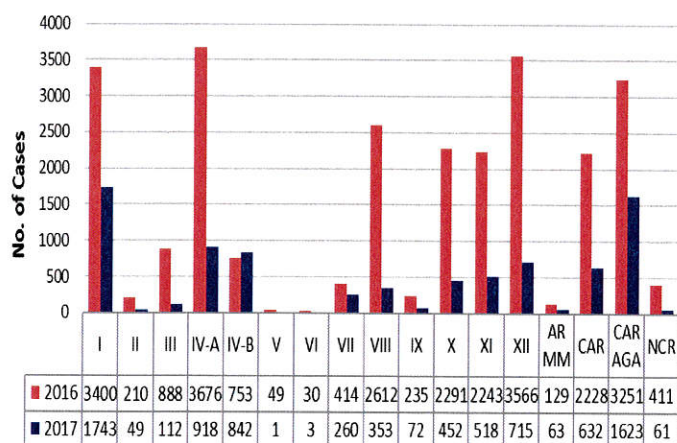
Fig. 2 Influenza Cases by Morbidity Week,
Philippines, as of March 4, 2017
2017* vs 2016 (N=8,417)



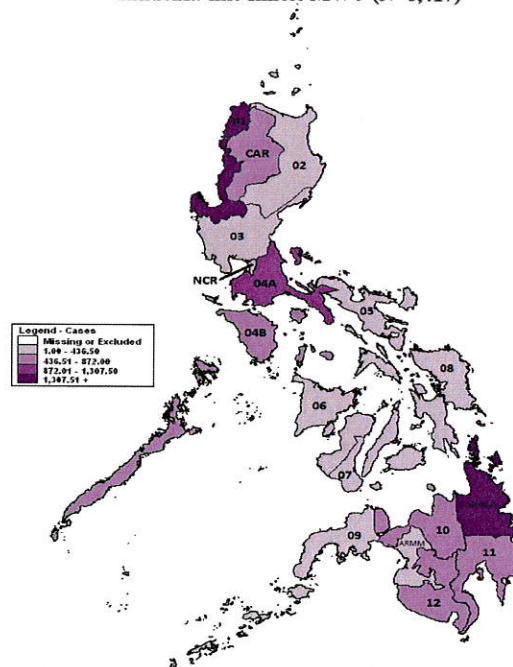
Geographic Distribution

Most of the cases were from the following regions: **Region I** (20.71%), **Region CARAGA** (19.28%), **Region IV-A** (10.91%), **Region IV-B** (10%), and **Region XII** (8.49%) (Fig. 3)

Fig.3 Influenza-like Illness Cases by Region
Philippines, 2017* vs 2016,



Influenza-like Illness MW 9 (N=8,417)



*NOTE: Case counts reported here do NOT represent the final number and are subject to change after inclusion of delayed reports and review of cases.



January 1 – March 4, 2017

Epidemiology Bureau
Public Health Surveillance Division

Profile of Cases

Ages of cases ranged from less than 1 month to 100 years old. Majority of cases were male (50.1%). Most of the cases belonged to the 1 to 4 years' age group (31.28%) (Fig. 4). There were 5 reported deaths (CFR=0.06%) (Fig. 5).

Fig. 4 Influenza-like Illness Cases by Agegroup and Sex
Philippines, as of March 4, 2017 (N=8,417)

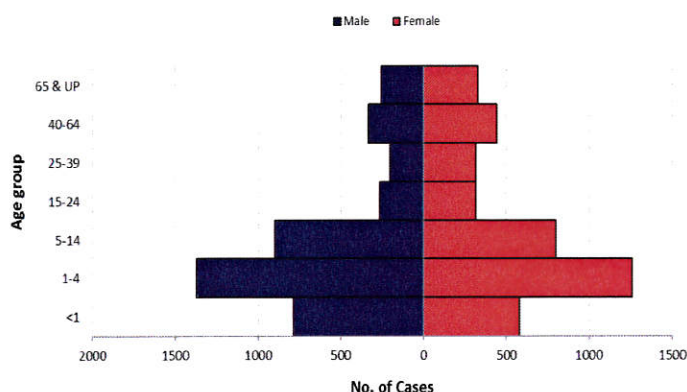


Fig. 5 Influenza-like Illness Case Fatality Rate (CFR) by Age Group,
Philippines, as of March 4, 2017

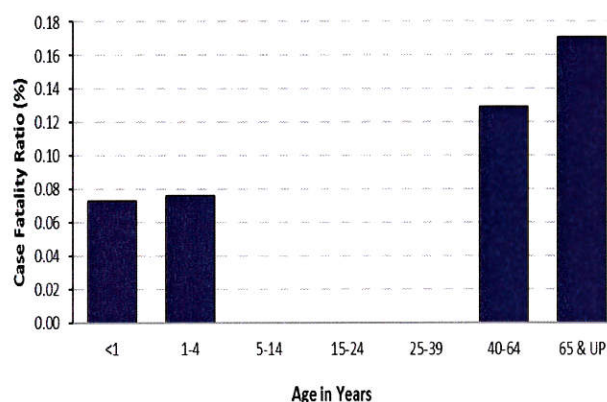


Table 1. Influenza-like Illness Cases & Deaths by Region
Philippines, 2017* vs 2016

Region	Cases			Deaths			
	2017	2016	% Change	2017	CFR (%)	2016	CFR (%)
I	1743	3400	-48.7	0	0.00	1	0.03
II	49	210	-76.7	0	0.00	0	0.00
III	112	888	-87.4	0	0.00	0	0.00
IV-A	918	3676	-75.0	1	0.11	0	0.00
IV-B	842	753	11.8	0	0.00	1	0.13
V	1	49	-98.0	0	0.00	0	0.00
VI	3	30	-90.0	0	0.00	0	0.00
VII	260	414	-37.2	0	0.00	0	0.00
VIII	353	2612	-86.5	0	0.00	0	0.00
IX	72	235	-69.4	0	0.00	0	0.00
X	452	2291	-80.3	0	0.00	0	0.00
XI	518	2243	-76.9	0	0.00	0	0.00
XII	715	3566	-79.9	0	0.00	0	0.00
ARMM	63	129	-51.2	0	0.00	0	0.00
CAR	632	2228	-71.6	1	0.16	0	0.00
CARAGA	1623	3251	-50.1	3	0.18	3	0.09
NCR	61	411	-85.2	0	0.00	0	0.00
Total	8417	26386	-68.1	5	0.06	5	0.02

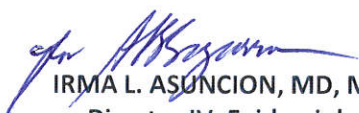
*NOTE: Case counts reported here do NOT represent the final number and are subject to change after inclusion of delayed reports and review of cases.



January 1 – March 4, 2017

Epidemiology Bureau
Public Health Surveillance Division

EDITORIAL BOARD



IRMA L. ASUNCION, MD, MHA, CESO IV
Director IV, Epidemiology Bureau



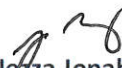
GENESIS MAY J. SAMONTE, MD, MSc, PHSAE
OIC-Division Chief PHSD



Allan P. Ignacio
Statistician II



June B. Corpuz, RN
PIDS Program Manager



Jezza Jonah D. Crucena, RN
VPD Program Manager

