



January 1 – March 4, 2017

Epidemiology Bureau
Public Health Surveillance Division

TRENDS IN THE PHILIPPINES

A total of **27** diphtheria cases were reported nationwide from January 1 – March 4, 2017. This is **58.82%** higher compared to the same period last year (17 cases). Figure 1 shows the distribution of the reported diphtheria cases in the country by morbidity week.

GEOGRAPHIC DISTRIBUTION

The number of diphtheria cases vary by region. Figure 2 shows the distribution of reported diphtheria cases by region in comparison to the same time period last year. There is an increase in the number of reported cases from region 3, 9, CAR and NCR and a sustained presence of diphtheria cases in region 4A, 6 and 11.

Table 1 indicates the reported diphtheria cases by region in the Philippines. Majority of the reported diphtheria cases came from NCR and Region 4A.

Fig. 1 Alert and Epidemic Threshold and Reported Diphtheria Cases by Morbidity Week, Philippines, as of March 4, 2017 (N=27)

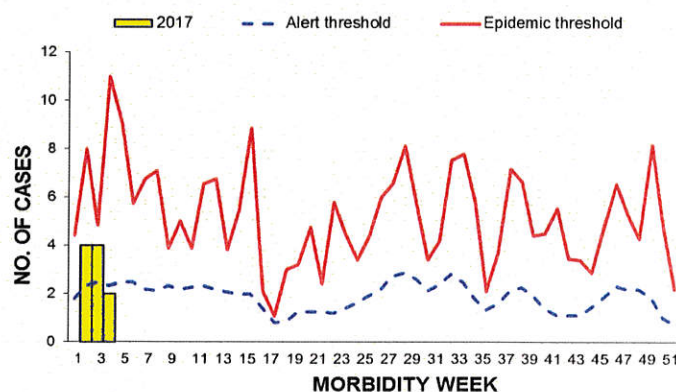


Table 2 presents cluster ⁽¹⁾ of diphtheria cases was identified within Morbidity Weeks 4 to 6 in Brgy. Cawit, Zamboanga City, Zamboanga Del Sur, Region 9.

⁽¹⁾Cluster Definition: 2 or more diphtheria cases from the same barangay, reported within 4 consecutive weeks.

Fig. 2 Reported Diphtheria Cases by Region and 2016 vs 2017, Philippines, as of March 4, 2017 (N=27)

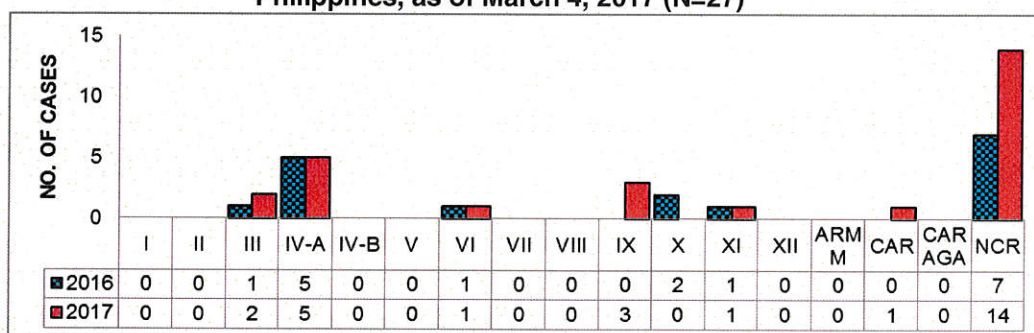


Table 1. Case Classification of Reported Diphtheria Cases by Region and Outcome, Philippines, as of March 4, 2017 (N=27)

REGION	Case Classification		Reported Cases	Died	CFR %
	Confirmed Cases	Probable Cases			
I	0	0	0	0	0.00
II	0	0	0	0	0.00
III	2	0	2	1	50.00
IV-A	0	5	5	1	20.00
IV-B	0	0	0	0	0.00
V	0	0	0	0	0.00
VI	0	1	1	1	100.00
VII	0	0	0	0	0.00
VIII	0	0	0	0	0.00
IX	3	0	3	1	33.33
X	0	0	0	0	0.00
XI	0	1	1	1	100.00
XII	0	0	0	0	0.00
ARMM	0	0	0	0	0.00
CAR	0	1	1	0	0.00
CARAGA	0	0	0	0	0.00
NCR	6	8	14	1	7.14
PHL	11	16	27	6	22.22

Table 2. Cluster of Reported Diphtheria Cases by Location and Morbidity Week, Philippines, as of March 4, 2017 (n=2)

MORBIDITY WEEK	REGION/PROVINCE/MUNCITY/BARANGAY	NO. OF CASES
4-6	IX	2
	ZAMBOANGA DEL SUR	
	ZAMBOANGA CITY	
	CAWIT	



January 1 – March 4, 2017

Epidemiology Bureau
Public Health Surveillance Division

PROFILE OF CASES

As shown in figure 3, we have **15 males and 12 females** and most of them belong to the 1 to 9 years old age group. That will be **74% of the total cases**. Four (15%) of reported cases were not administered with any dose of DPT/PENTA valent vaccine while 5 (18%) of reported cases received complete dose of DPT/PENTA valent vaccine (Figure 4). **Six (22%)** of the reported diphtheria cases have **died** (Figure 5).

Fig. 3 Reported Diphtheria Cases by Age Group and Sex, Philippines, as of March 4, 2017 (N=27)

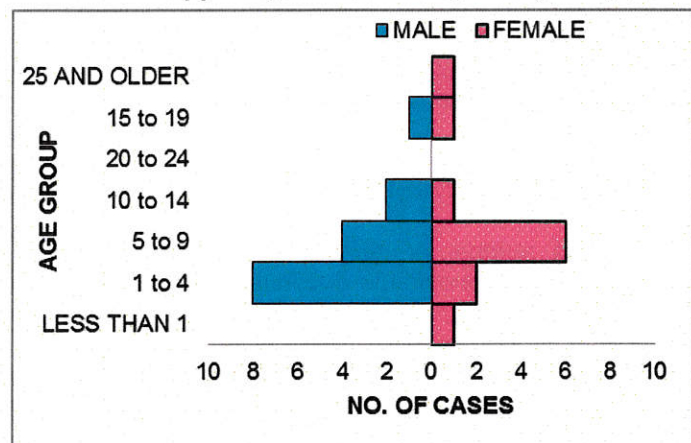


Fig. 4 Reported Diphtheria Cases by DPT Doses and Age Group, Philippines, as of March 4, 2017 (N=27)

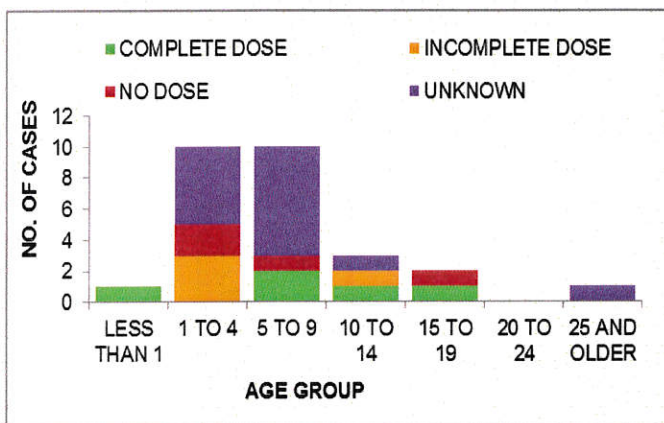
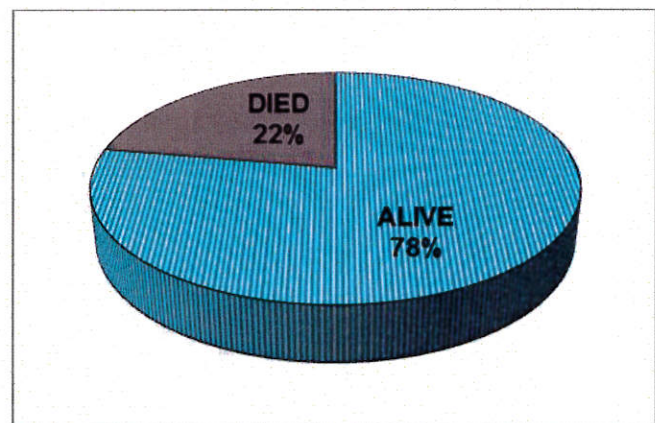


Fig. 5 Reported Diphtheria Cases by Outcome, Philippines, as of March 4, 2017 (N=27)



Standard Case Definition of Diphtheria:

• **Probable Case:**

- A person with an illness of the upper respiratory tract characterized by laryngitis or pharyngitis or tonsillitis, and adherent membranes on tonsils, pharynx and/or nose.

• **Confirmed Case:**

- A probable case that is laboratory confirmed or linked epidemiologically to a laboratory-confirmed case.

Note: Persons with positive *Corynebacterium diphtheriae* cultures who do not meet the clinical description (i.e. asymptomatic carriers) should not be reported as probable or confirmed diphtheria cases.

Editorial Board

Irma L. Asuncion
IRMA L. ASUNCION, MD, MHA, CESO IV
Director IV, *Epidemiology Bureau*

Genesis May J. Samonte
GENESIS MAY J. SAMONTE, MD, MSc, PHSAE
OIC-Division Chief, *PHSD*

June Cantata B. Corpuz
JUNE CANTATA B. CORPUZ, RN
Nurse III, *PIDSR National Coordinator*

Jeza Jonah D. Crucena
JEZZA JONAH D. CRUCENA, RN
Nurse III, *VPDS National Coordinator*

Allan P. Ignacio
ALLAN P. IGNACIO
Statistician II, *PHSD*