

VOLUME 3 - SCHEMATIC PLANS AND TECHNICAL REQUIREMENTS  
OF 25-BED HOSPITAL

3.6 - ENGINEERING, MAINTENANCE AND HOUSEKEEPING  
Service Facility

Hospital: Secondary, 25-Bed	ROOM DATA SHEET		Department of Health HEALTH INFRASTRUCTURE SERVICE
Updated Reference: June 1994	Department: ENGINEERING AND MAINTENANCE	Room Title: ELECTRICAL ROOM	Reference Sheet Number: 25B-EN-RDS3.1B
TECHNICAL DESIGN DATA:			
ENVIRONMENTAL CONDITIONS	DESIGN DATA	ENVIRONMENTAL CONDITIONS	DESIGN DATA
AIR		LIGHTING AND VISUAL	
Outdoor air temperature (deg. C)	ave. local station temp. reading	General illumination (LUX)	150
Room Temperature (deg. C)	atmospheric	Night illumination (LUX)	NA
Mechanical ventilation:		Task illumination (LUX)	500
Volume (cu.m./hr.-person)	25	Colour rendering	essential:DESIRABLE unnecessary
Velocity (m./hr.)	900	Standby light	ESSENTIAL desirable unnecessary
Pressure:		Emergency light	ESSENTIAL desirable unnecessary
Exhaust (psi)	NA	Daylight	essential:DESIRABLE unnecessary
Inlet (psi)	NA	View out	essential:DESIRABLE unnecessary
% Dust filtration	NA	Privacy	essential desirable:UNNECESSARY
Humidity (% RH)	NA	Black out	essential desirable:UNNECESSARY
Cooling load (TR)	NA		
SOUND		SAFETY	
Acceptable sound level (db)	60	Accessible hot surface:	NA
Speech privacy	essential:desirable:UNNECESSARY	Maximum temperature (deg. C)	NA
Quality which cannot be	NA	Domestic hot water:	NA
tolerated		Maximum temperature (deg. C)	NA
		Access limit	maintenance staff
		Fire risk	low : medium : HIGH
		Other risks	NA

Hospital: Secondary, 25-Bed	ROOM DATA SHEET		Department of Health HEALTH INFRASTRUCTURE SERVICE
Updated Reference: June 1994	Department: MAINTENANCE AND MOTORPOOL	Room Title: STORAGE	Reference Sheet Number: 25B-EN-RDS4.3B
TECHNICAL DESIGN DATA:			
ENVIRONMENTAL CONDITIONS	DESIGN DATA	ENVIRONMENTAL CONDITIONS	DESIGN DATA
AIR		LIGHTING AND VISUAL	
Outdoor air temperature (deg. C)	ave. local station temp. reading	General illumination (LUX)	500
Room Temperature (deg. C)	ambient	Night illumination (LUX)	NA
Mechanical ventilation:		Task illumination (LUX)	1000
Volume (cu.m./hr.-person)	NA	Colour rendering	essential:desirable:UNNECESSARY
Velocity (m./hr.)	NA	Standby light	essential:DESIRABLE:unnecessary
Pressure:		Emergency light	essential:desirable:UNNECESSARY
Exhaust (psi)	NA	Daylight	essential:DESIRABLE:unnecessary
Inlet (psi)	NA	View out	essential:DESIRABLE:unnecessary
% Dust filtration	NA	Privacy	essential:desirable:UNNECESSARY
Humidity (% RH)	NA	Black out	essential:desirable:UNNECESSARY
Cooling load (TR)	NA		
SOUND		SAFETY	
Acceptable sound level (db)	60	Accessible hot surface:	NA
Speech privacy	essential:desirable:UNNECESSARY	Maximum temperature (deg. C)	NA
Quality which cannot be	NA	Domestic hot water:	NA
tolerated		Maximum temperature (deg. C)	NA
		Access limit	maintenance staff
		Fire risk	LOW : medium : high
		Other risks	NA

Hospital: Secondary, 25-Bed	ROOM DATA SHEET		Department of Health HEALTH INFRASTRUCTURE SERVICE
Updated Reference: June 1994	Department: PHARMACY	Room Title: PHARMACY	Reference Sheet Number: 25B-AN-RDS3.1B
TECHNICAL DESIGN DATA:			
ENVIRONMENTAL CONDITIONS	DESIGN DATA	ENVIRONMENTAL CONDITIONS	DESIGN DATA
AIR		LIGHTING AND VISUAL	
Outdoor air temperature (deg. C)	ave. local station temp. reading	General illumination (LUX)	500
Room Temperature (deg. C)	25	Night illumination (LUX)	NA
Mechanical ventilation:		Task illumination (LUX)	1000
Volume (cu.m./hr.-person)	12.75	Colour rendering	ESSENTIAL:desirable:unnecessary
Velocity (m./hr.)	750	Standby light	ESSENTIAL:desirable:unnecessary
Pressure:		Emergency light	ESSENTIAL:desirable:unnecessary
Exhaust (psi)	NA	Daylight	essential:desirable:UNNECESSARY
Inlet (psi)	NA	View out	essential:DESIRABLE:unnecessary
% Dust filtration	93% - 99% @ 1 micron	Privacy	essential:DESIRABLE:unnecessary
Humidity (% RH)	50	Black out	essential:desirable:UNNECESSARY
Cooling load (TR)	2.4		
SOUND		SAFETY	
Acceptable sound level (db)	50	Accessible hot surface:	electric stove
Speech privacy	essential:DESIRABLE:unnecessary	Maximum temperature (deg. C)	100
Quality which cannot be	tonal impact	Domestic hot water:	at sink
tolerated		Maximum temperature (deg. C)	70
		Access limit	pharmacist, hosp. staff & visitors
		Fire risk	low : medium : HIGH
		Other risks	exposure to hazardous chemicals



Hospital: Secondary, 25-Bed	ROOM DATA SHEET		Department of Health HEALTH INFRASTRUCTURE SERVICE
Updated Reference: June 1994	Department: PROPERTY AND SUPPLY	Room Title: CENTRAL SUPPLY STORAGE	Reference Sheet Number: 25B-EN-RDS1.1B
TECHNICAL DESIGN DATA:			
ENVIRONMENTAL CONDITIONS	DESIGN DATA	ENVIRONMENTAL CONDITIONS	DESIGN DATA
AIR		LIGHTING AND VISUAL	
Outdoor air temperature (deg. C)	ave. local station temp. reading	General illumination (LUX)	150
Room Temperature (deg. C)	atmospheric	Night illumination (LUX)	NA
Mechanical ventilation		Task illumination (LUX)	NA
Volume (cu.m./hr.-person)	20	Colour rendering	essential:DESIRABLE:unnecessary
Velocity (m./hr.)	900	Standby light	ESSENTIAL:desirable:unnecessary
Pressure:		Emergency light	ESSENTIAL:desirable:unnecessary
Exhaust (psi)	NA	Daylight	essential:DESIRABLE:unnecessary
Inlet (psi)	NA	View out	essential:DESIRABLE:unnecessary
% Dust filtration	NA	Privacy	essential:desirable:UNNECESSARY
Humidity (% RH)	NA	Black out	essential:desirable:UNNECESSARY
Cooling load (TR)	NA		
SOUND		SAFETY	
Acceptable sound level (db)	60	Accessible hot surface:	NA
Speech privacy	essential:desirable:UNNECESSARY	Maximum temperature (deg. C)	NA
Quality which cannot be	NA	Domestic hot water:	NA
tolerated		Maximum temperature (deg. C)	NA
		Access limit	supply officer and utility worker
		Fire risk	low : medium : HIGH
		Other risks	NA

Hospital: Secondary, 25-Bed	ROOM DATA SHEET		Department of Health HEALTH INFRASTRUCTURE SERVICE
Updated Reference: June 1994	Department: LINEN AND LAUNDRY	Room Title: LINEN OFFICE	Reference Sheet Number: 25B-EN-RDS2.1B
TECHNICAL DESIGN DATA:			
ENVIRONMENTAL CONDITIONS	DESIGN DATA	ENVIRONMENTAL CONDITIONS	DESIGN DATA
AIR		LIGHTING AND VISUAL	
Outdoor air temperature (deg. C)	ave. local station temp. reading	General illumination (LUX)	500
Room Temperature (deg. C)	atmospheric	Night illumination (LUX)	NA
Mechanical ventilation:		Task illumination (LUX)	1,000
Volume (cu.m./hr.-person)	25	Colour rendering	essential: DESIRABLE:unnecessary
Velocity (m./hr.)	900	Standby light	essential: DESIRABLE:unnecessary
Pressure:		Emergency light	essential: DESIRABLE:unnecessary
Exhaust (psi)	NA	Daylight	essential: DESIRABLE:unnecessary
Inlet (psi)	NA	View out	essential: DESIRABLE:unnecessary
% Dust filtration	NA	Privacy	essential: desirable: UNNECESSARY
Humidity (% RH)	NA	Black out	essential: desirable: UNNECESSARY
Cooling load (TR)	NA		
SOUND		SAFETY	
Acceptable sound level (db)	60	Accessible hot surface:	NA
Speech privacy	essential: desirable: UNNECESSARY	Maximum temperature (deg. C)	NA
Quality which cannot be	tonal impact	Domestic hot water:	NA
tolerated		Maximum temperature (deg. C)	NA
		Access limit	linen and laundry staff
		Fire risk	LOW : medium : high
		Other risks	NA

Hospital: Secondary, 25-Bed	ROOM DATA SHEET		Department of Health HEALTH INFRASTRUCTURE SERVICE
Updated Reference: June 1994	Department: LINEN AND LAUNDRY	Room Title: SORTING AND WASHING AREA	Reference Sheet Number: 25B-EN-RDS2.2B
TECHNICAL DESIGN DATA:			
ENVIRONMENTAL CONDITIONS	DESIGN DATA	ENVIRONMENTAL CONDITIONS	DESIGN DATA
AIR		LIGHTING AND VISUAL	
Outdoor air temperature (deg. C)	ave. local station temp. reading	General illumination (LUX)	500
Room Temperature (deg. C)	atmospheric	Night illumination (LUX)	NA
Mechanical ventilation:		Task illumination (LUX)	NA
Volume (cu.m./hr.-person)	25	Colour rendering	ESSENTIAL:desirable:unnecessary
Velocity (m./hr.)	900	Standby light	essential:DESIRABLE:unnecessary
Pressure:		Emergency light	essential:desirable:UNNECESSARY
Exhaust (psi)	NA	Daylight	essential:DESIRABLE:unnecessary
Inlet (psi)	NA	View out	essential:DESIRABLE:unnecessary
% Dust filtration:	NA	Privacy	essential:desirable:UNNECESSARY
Humidity (% RH)	NA	Black out	essential:desirable:UNNECESSARY
Cooling load (TR)	NA		
SOUND		SAFETY	
Acceptable sound level (db)	60	Accessible hot surface:	NA
Speech privacy	essential:desirable:UNNECESSARY	Maximum temperature (deg. C)	NA
Quality which cannot be	tonal impact	Domestic hot water:	NA
tolerated		Maximum temperature (deg. C)	NA
		Access limit	linen and laundry staff
		Fire risk	LOW : medium : high
		Other risks	NA



Hospital Secondary, 25-Bed	ROOM DATA SHEET		Department of Health HEALTH INFRASTRUCTURE SERVICE
Updated Reference: June 1994	Department: LINEN AND LAUNDRY	Room Title: PRESSING AND IRONING AREA	Reference Sheet Number: 25B-EN-RDS2.3B
TECHNICAL DESIGN DATA:			
ENVIRONMENTAL CONDITIONS	DESIGN DATA	ENVIRONMENTAL CONDITIONS	DESIGN DATA
AIR		LIGHTING AND VISUAL	
Outdoor air temperature (deg. C)	ave. local station temp. reading	General illumination (LUX)	500
Room Temperature (deg. C)	atmospheric	Night illumination (LUX)	NA
Mechanical ventilation:		Task illumination (LUX)	NA
Volume (cu.m./hr.-person)	25	Colour rendering	ESSENTIAL:desirabe:unnecessary
Velocity (m./hr.)	900	Standby light	essential:DESIRABLE:unnecessary
Pressure:		Emergency light	essential:DESIRABLE:unnecessary
Exhaust (psi)	NA	Daylight	essential:DESIRABLE:unnecessary
Inlet (psi)	NA	View out	essential:DESIRABLE:unnecessary
% Dust filtration	NA	Privacy	essential:desirable:UNNECESSARY
Humidity (% RH)	NA	Black out	essential:desirable:UNNECESSARY
Cooling load (TR)	NA		
SOUND		SAFETY	
Acceptable sound level (db)	60	Accessible hot surface:	press and flatwork ironer
Speech privacy	essential:desirable:UNNECESSARY	Maximum temperature (deg. C)	100
Quality which cannot be	NA	Domestic hot water:	NA
tolerated		Maximum temperature (deg. C)	NA
		Access limit	linen and laundry workers
		Fire risk	low : medium : HIGH
		Other risks	NA



Hospital: Secondary, 25-Bed	ROOM DATA SHEET		Department of Health HEALTH INFRASTRUCTURE SERVICE
Updated Reference: June 1994	Department: LINEN AND LAUNDRY	Room Title: LOCKER ROOM AND TOILET	Reference Sheet Number: 25B-EN-RDS2.4B
TECHNICAL DESIGN DATA:			
ENVIRONMENTAL CONDITIONS	DESIGN DATA	ENVIRONMENTAL CONDITIONS	DESIGN DATA
AIR		LIGHTING AND VISUAL	
Outdoor air temperature (deg. C)	ave. local station temp. reading	General illumination (LUX)	150
Room Temperature (deg. C)	atmospheric	Night illumination (LUX)	NA
Mechanical ventilation:		Task illumination (LUX)	NA
Volume (cu.m./hr.-person)	25	Colour rendering	essential:desirable:UNNECESSARY
Velocity (m./hr.)	900	Standby light	essential:DESIRABLE:unnecessary
Pressure:		Emergency light	essential:desirable:UNNECESSARY
Exhaust (psi)	NA	Daylight	essential:DESIRABLE:unnecessary
Inlet (psi)	NA	View out	essential:desirable:UNNECESSARY
% Dust filtration	NA	Privacy	essential:DESIRABLE:unnecessary
Humidity (% RH)	NA	Black out	essential:desirable:UNNECESSARY
Cooling load (TR)	NA		
SOUND		SAFETY	
Acceptable sound level (db)	60	Accessible hot surface:	NA
Speech privacy	essential:desirable:UNNECESSARY	Maximum temperature (deg. C)	NA
Quality which cannot be	NA	Domestic hot water:	NA
tolerated		Maximum temperature (deg. C)	NA
		Access limit	laundry unit workers
		Fire risk	LOW : medium : high
		Other risks	NA

Hospital: Secondary, 25-Bed	ROOM DATA SHEET		Department of Health HEALTH INFRASTRUCTURE SERVICE
Updated Reference: June 1994	Department: MAINTENANCE AND MOTORPOOL	Room Title: STAFF ROOM	Reference Sheet Number: 25B-EN-RDS4 1B
TECHNICAL DESIGN DATA			
ENVIRONMENTAL CONDITIONS	DESIGN DATA	ENVIRONMENTAL CONDITIONS	DESIGN DATA
AIR		LIGHTING AND VISUAL	
Outdoor air temperature (deg. C)	ave. local station temp. reading	General Illumination (LUX)	250-500
Room Temperature (deg. C)	25	Night illumination (LUX)	NA
Mechanical ventilation:		Task illumination (LUX)	1000
Volume (cu m./hr.-person)	12.75	Colour rendering	essential:DESIRABLE:unnecessary
Velocity (m./hr.)	NA	Standby light	essential:DESIRABLE:unnecessary
Pressure:		Emergency light	essential:desirable:UNNECESSARY
Exhaust (psi)	NA	Daylight	essential:desirable:UNNECESSARY
Inlet (psi)	NA	View out	essential:DESIRABLE:unnecessary
% Dust filtration	93% - 99% @ 1 micron	Privacy	essential:DESIRABLE:unnecessary
Humidity (% RH)	50	Black out	essential:desirable:UNNECESSARY
Cooling load (TR)	2.0		
SOUND		SAFETY	
Acceptable sound level (db)	50	Accessible hot surface:	NA
Speech privacy	essential:desirable:UNNECESSARY	Maximum temperature (deg. C)	NA
Quality which cannot be	tonal impact	Domestic hot water:	NA
tolerated		Maximum temperature (deg. C)	NA
		Access limit	maintenance staff
		Fire risk	LOW : medium : high
		Other risks:	NA

Hospital: Secondary, 25-Bed	ROOM DATA SHEET		Department of Health HEALTH INFRASTRUCTURE SERVICE
Updated Reference: June 1994	Department: MAINTENANCE AND MOTORPOOL	Room Title: LOCKER ROOM AND TOILET	Reference Sheet Number: 25B-EN-RDS4 5B
TECHNICAL DESIGN DATA:			
ENVIRONMENTAL CONDITIONS	DESIGN DATA	ENVIRONMENTAL CONDITIONS	DESIGN DATA
AIR		LIGHTING AND VISUAL	
Outdoor air temperature (deg. C)	ave. local station temp. reading	General illumination (LUX)	150
Room Temperature (deg. C)	ambient	Night illumination (LUX)	NA
Mechanical ventilation:		Task illumination (LUX)	1000
Volume (cu.m./hr.-person)	NA	Colour rendering	essential:desirable:UNNECESSARY
Velocity (m./hr.)	NA	Standby light	essential:DESIRABLE:unnecessary
Pressure:		Emergency light	essential:desirable:UNNECESSARY
Exhaust (psi)	NA	Daylight	essential:desirable:UNNECESSARY
Inlet (psi)	NA	View out	essential:desirable:UNNECESSARY
% Dust filtration	NA	Privacy	ESSENTIAL:desirable:unnecessary
Humidity (% RH)	NA	Black out	essential:desirable:UNNECESSARY
Cooling load (TR)	NA		
SOUND		SAFETY	
Acceptable sound level (db)	60	Accessible hot surface:	NA
Speech privacy	essential:desirable:UNNECESSARY	Maximum temperature (deg. C)	NA
Quality which cannot be	NA	Domestic hot water:	NA
tolerated		Maximum temperature (deg. C)	NA
		Access limit	maintenance staff
		Fire risk	LOW : medium : high
		Other risks	NA



Hospital: Secondary, 25-Bed	ROOM DATA SHEET		Department of Health HEALTH INFRASTRUCTURE SERVICE
Updated Reference: June 1994	Department: MAINTENANCE AND MOTORPOOL	Room Title: GARAGE	Reference Sheet Number 258-EN-RDS4.4B
TECHNICAL DESIGN DATA			
ENVIRONMENTAL CONDITIONS	DESIGN DATA	ENVIRONMENTAL CONDITIONS	DESIGN DATA
AIR		LIGHTING AND VISUAL	
Outdoor air temperature (deg. C)	ave. local station temp. reading	General illumination (LUX)	150
Room Temperature (deg. C)	atmospheric	Night illumination (LUX)	NA
Mechanical ventilation:		Task illumination (LUX)	NA
Volume (cu.m./hr.-person)	NA	Colour rendering	essential:DESIRABLE:unnecessary
Velocity (m./hr.)	NA	Standby light	essential:DESIRABLE:unnecessary
Pressure:		Emergency light	essential:DESIRABLE:unnecessary
Exhaust (psi)	NA	Daylight	essential:DESIRABLE:unnecessary
Inlet (psi)	NA	View out	ESSENTIAL:desirable:unnecessary
% Dust filtration	NA	Privacy	essential:desirable:UNNECESSARY
Humidity (% RH)	NA	Black out	essential:desirable:UNNECESSARY
Cooling load (TR)	NA		
SOUND		SAFETY	
Acceptable sound level (db)	70	Accessible hot surface:	NA
Speech privacy	essential:desirable:UNNECESSARY	Maximum temperature (deg. C)	NA
Quality which cannot be	tonal impact	Domestic hot water,	NA
tolerated		Maximum temperature (deg. C)	NA
		Access limit	maintenance staff
		Fire risk	low : MEDIUM : high
		Other risks	NA

Hospital: Secondary, 25-Bed	ROOM DATA SHEET		Department of Health HEALTH INFRASTRUCTURE SERVICE
Updated Reference: June 1994	Department: DIETARY	Room Title: FOOD CONVEYING HALLWAY	Reference Sheet Number: 25B-DI-RDS1.9A
FUNCTIONAL DESIGN REQUIREMENTS:			
<p>This activity space provides facilities needed for the following activities:</p> <ul style="list-style-type: none"> <li>a. Kitchen circulation</li> <li>b. Temporary transit station of food tray truck to be brought to the ward areas.</li> </ul> <p>People Involved:</p> <p>Dietary Staff</p> <p>Planning Relationships:</p> <ul style="list-style-type: none"> <li>a. Adjacent to Food Preparation Area.</li> <li>b. Located close to entrance door of Dietary Area.</li> </ul>	EQUIPMENT AND ACCESSORY CHECKLIST	QUANTITY	REMARKS
	FURNITURE AND FIXTURE CHECKLIST	QUANTITY	REMARKS
	ADDITIONAL EQUIPMENT AND ENGINEERING TERMINALS	QUANTITY	REMARKS

Hospital: Secondary, 25-Bed	ROOM DATA SHEET		Department of Health HEALTH INFRASTRUCTURE SERVICE		
Updated Reference: June 1994	Department: DIETARY	Room Title: LOCKER ROOM AND TOILET	Reference Sheet Number 25B-DI-RDS1.8C		
TECHNICAL DESIGN DATA		LAYOUT OF ROOM AND SPACE COMPONENTS:			
DIRECT SERVICES	DESIGN DATA	Scale 1:100 mts.			
Disposal	hospital waste category: A				
Hot water	NA				
Cold water	required at toilet fixtures				
Drainage	required at toilet fixtures & floor				
Gas	NA				
Compressed air	NA				
Steam	NA				
Others					
DIRECT DEMANDS ON FLOOR AND WALL				Key	
Loading	NA			1 Locker, 500x600	
Spillage	slight : OCCASIONAL : frequent	2 Lavatory			
Foot traffic	light : MEDIUM : heavy	3 Water closet			
Wheel traffic	NA	4 Mirror			
Impacts	NA	5 Towel holder			
Abrasion	NA	SPACE DEMANDS (Total Minimum Space Required in sq.m.) : 8.00			
Easy maintenance	ESSENTIAL:desirable:unnecessary	Space Components	Minimum Space Required/Component		
Vibration free	ESSENTIAL:desirable:unnecessary	Toilet and Bath	5.00 sq.m.		
Door sets	ordinary access door	Locker Room	3.00 sq.m.		
Windows	clear, solar control, privacy con-	REGULATIONS AND NOTES:			
	trol				
Internal glazing	nil				



Hospital: Secondary, 25-Bed	ROOM DATA SHEET		Department of Health HEALTH INFRASTRUCTURE SERVICE
Updated Reference: June 1994	Department: DIETARY	Room Title: LOCKER ROOM AND TOILET	Reference Sheet Number: 25B-DI-RDS1.8A
FUNCTIONAL DESIGN REQUIREMENTS:			
<p>This activity space provides facilities needed for the following activities:</p> <ul style="list-style-type: none"> <li>a. Dietary Staff to change clothes.</li> <li>b. Dietary Staff to bathe and perform other personal hygiene activities.</li> <li>c. Dietary Staff to store clothing and personal effects in the Locker Area.</li> </ul> <p>People Involved:</p> <p>Dietary Staff</p> <p>Planning Relationships:</p> <ul style="list-style-type: none"> <li>a. Close to Dietary Work Areas.</li> </ul>	EQUIPMENT AND ACCESSORY CHECKLIST	QUANTITY	REMARKS
	FURNITURE AND FIXTURE CHECKLIST	QUANTITY	REMARKS
	Locker, 500x600 Lavatory Water closet	3 1 1	
	ADDITIONAL EQUIPMENT AND ENGINEERING TERMINALS	QUANTITY	REMARKS
Rail, curtain, window Outlet, 10A, 2P, 240V, duplex	1 1	grounding type, parallel slots	

Hospital: Secondary, 25-Bed	ROOM DATA SHEET		Department of Health HEALTH INFRASTRUCTURE SERVICE
Updated Reference: June 1994	Department: DIETARY	Room Title: GARBAGE DISPOSAL CUBICLE	Reference Sheet Number: 25B-DI-RDS1.7A
FUNCTIONAL DESIGN REQUIREMENTS:			
<p>This activity space provides facilities needed for the following activities:</p> <ul style="list-style-type: none"> <li>a. Food Service Workers sort refuse accordingly.</li> <li>b. Food Service Workers pack refuse and/or place sorted refuse into proper bins.</li> <li>c. Refuse is temporarily stationed in this area prior to collection by local government garbage trucks.</li> <li>d. Delivery of garbage to the burning pit.</li> </ul> <p>People Involved:</p> <p>2 x Food Service Workers</p> <p>Planning Relationships:</p> <ul style="list-style-type: none"> <li>a. Located in the outer perimeter of the Dietary Area.</li> <li>b. Close to the Dish/Pan Wash Area.</li> </ul>	EQUIPMENT AND ACCESSORY CHECKLIST	QUANTITY	REMARKS
	Garbage bin	2	
	FURNITURE AND FIXTURE CHECKLIST	QUANTITY	REMARKS
	Faucet with hose bibb	1	
	ADDITIONAL EQUIPMENT AND ENGINEERING TERMINALS	QUANTITY	REMARKS

Hospital: Secondary, 25-Bed	ROOM DATA SHEET		Department of Health HEALTH INFRASTRUCTURE SERVICE
Updated Reference: June 1994	Department: DIETARY	Room Title: DISH / PAN WASH AREA	Reference Sheet Number: 25B-DI-RDS1.6C
TECHNICAL DESIGN DATA:		LAYOUT OF ROOM AND SPACE COMPONENTS:	
DIRECT SERVICES	DESIGN DATA	<p>Scale 1:100 mts.</p> <p>Key</p> <ul style="list-style-type: none"><li>1 Slop sink</li><li>2 Tray truck</li><li>3 Double compartment sink, with each compartment measuring 610x610x357, and two drain boards</li><li>4 Tray drying rack</li><li>5 Pot cabinet</li><li>6 Floor drain</li></ul>	
Disposal	hospital waste category: A		
Hot water	required at sink		
Cold water	required at sink & slop sink		
Drainage	required at sink, slop sink & floor		
Gas	NA		
Compressed air	NA		
Steam	NA		
Others			
DIRECT DEMANDS ON FLOOR AND WALL			
Loading	light : MEDIUM : heavy	Space Components	Minimum Space Required/Component
Spillage	slight : occasional : FREQUENT		
Foot traffic	light : medium : HEAVY		
Wheel traffic	light : medium : HEAVY		
Impacts	slight : OCCASIONAL : frequent	REGULATIONS AND NOTES:	
Abrasion	slight : OCCASIONAL : frequent		
Easy maintenance	ESSENTIAL:desirable:unnecessary		
Vibration free	ESSENTIAL:desirable:unnecessary		
Door sets	nil, open to circulation		
Windows	clear, solar control		
Internal glazing	nil		



Hospital: Secondary, 25-Bed	R O O M   D A T A   S H E E T		Department of Health HEALTH INFRASTRUCTURE SERVICE	
Updated Reference: June 1994	Department: DIETARY	Room Title: DISH / PAN WASH AREA	Reference Sheet Number: 25B-DI-RDS1.6A	
FUNCTIONAL DESIGN REQUIREMENTS:				
<p>This activity space provides facilities needed for the following activities:</p> <ul style="list-style-type: none"> <li>a. Food trays and tray truck are washed and parked.</li> <li>b. Washing of pots, pans, trays, dishes and other kitchen utensils.</li> <li>c. Food Service Workers perform other clean-up activities.</li> </ul> <p>People Involved:</p> <p>1x Food Service Worker</p> <p>Planning Relationships:</p> <ul style="list-style-type: none"> <li>a. Close to Food Preparation Area.</li> <li>b. Close to Food Conveying Area.</li> <li>c. Close to Garbage Disposal Cubicle.</li> </ul>		<p>EQUIPMENT AND ACCESSORY CHECKLIST</p> <p>Tray truck Tray drying rack</p>	<p>QUANTITY</p> <p>1 1</p>	<p>REMARKS</p>
		<p>FURNITURE AND FIXTURE CHECKLIST</p> <p>Pot cabinet Slop sink Double compartment sink, with each compartment measuring 610x610x357, and two drain boards</p>	<p>QUANTITY</p> <p>1 1</p>	<p>REMARKS</p>
		<p>ADDITIONAL EQUIPMENT AND ENGINEERING TERMINALS</p> <p>Rail, curtain, window Outlet, 10A, 2P, 240V, duplex</p>	<p>QUANTITY</p> <p>1 2</p>	<p>REMARKS</p> <p>grounding type, parallel slots</p>



Hospital: Secondary, 25-Bed	ROOM DATA SHEET		Department of Health HEALTH INFRASTRUCTURE SERVICE
Updated Reference: June 1994	Department: DIETARY	Room Title: DRY STORAGE ROOM	Reference Sheet Number: 25B-DI-RDS1.3C
TECHNICAL DESIGN DATA:		LAYOUT OF ROOM AND SPACE COMPONENTS:	
DIRECT SERVICES	DESIGN DATA	<p>Scale 1:100 mts.</p>	
Disposal	hospital waste category: A		
Hot water	NA		
Cold water	NA		
Drainage	NA		
Gas	NA		
Compressed air	NA		
Steam	NA		
Others			
DIRECT DEMANDS ON FLOOR AND WALL			
Loading	light : MEDIUM : heavy		
Spillage	SLIGHT : occasional : frequent		
Foot traffic	light : MEDIUM : heavy		
Wheel traffic	light : MEDIUM : heavy		
Impacts	slight : OCCASIONAL : frequent		
Abrasion	slight : OCCASIONAL : frequent		
Easy maintenance	ESSENTIAL;desirable;unnecessary	SPACE DEMANDS (Total Minimum Space Required in sq.m.) : 7.00	
Vibration free	ESSENTIAL;desirable;unnecessary	Space Components	Minimum Space Required/Component
Door sets	wheeled equipment access door		
Windows	clear, solar control	REGULATIONS AND NOTES:	
Internal glazing	nil		

Hospital: Secondary, 25-Bed	ROOM DATA SHEET		Department of Health HEALTH INFRASTRUCTURE SERVICE
Updated Reference: June 1994	Department: DIETARY	Room Title: DRY STORAGE ROOM	Reference Sheet Number: 25B-DI-RDS1.3A
FUNCTIONAL DESIGN REQUIREMENTS:			
<p>This activity space provides facilities needed for the following activities:</p> <ul style="list-style-type: none"> <li>a. Storage of foodstuff procured.</li> <li>b. Storage of foodstuff intended for the next two meals.</li> <li>c. Storage of excess supplies for future use.</li> <li>d. Storage of foodstuff that does not spoil easily.</li> <li>e. Storage of china wares, linen napkins, etc.</li> </ul> <p>People Involved:</p> <ul style="list-style-type: none"> <li>1 x Dietitian</li> <li>2 x Food Service Workers</li> </ul> <p>Planning Relationships:</p> <ul style="list-style-type: none"> <li>a. Close to Receiving Room</li> <li>b. Close to Dietitian's Office</li> </ul>	EQUIPMENT AND ACCESSORY CHECKLIST	QUANTITY	REMARKS
	FURNITURE AND FIXTURE CHECKLIST	QUANTITY	REMARKS
	Open shelving Cabinets with shelves		
	ADDITIONAL EQUIPMENT AND ENGINEERING TERMINALS	QUANTITY	REMARKS
Outlet, 10A, 2P 240V, duplex	1	grounding type: parallel slots	



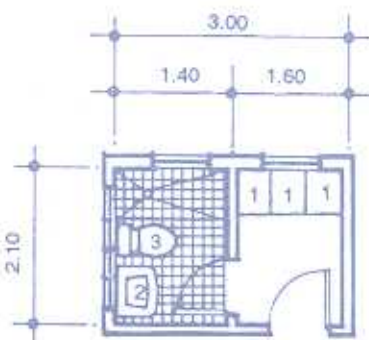
Hospital: Secondary, 25-Bed	ROOM DATA SHEET		Department of Health HEALTH INFRASTRUCTURE SERVICE
Updated Reference: June 1994	Department: DIETARY	Room Title: RECEIVING AREA	Reference Sheet Number: 25B-DI-RDS1.2A
FUNCTIONAL DESIGN REQUIREMENTS:			
<p>This activity space provides facilities needed for the following activities:</p> <ul style="list-style-type: none"> <li>a. Dietitian on duty and Auditor/Senior House Officer witness weighing of foodstuff delivered by the supplier.</li> <li>b. Auditor/Senior House Officer inspects and checks quality of food items purchased from the market and those delivered by supplier.</li> </ul> <p>People Involved:</p> <ul style="list-style-type: none"> <li>1 x Dietitian</li> <li>1 x Auditor/Senior House Officer</li> <li>1 x Food Service Workers</li> </ul> <p>Planning Relationships:</p> <ul style="list-style-type: none"> <li>a. Close to Dietitian's Office.</li> <li>b. Close to Dry Storage Room.</li> </ul>	EQUIPMENT AND ACCESSORY CHECKLIST	QUANTITY	REMARKS
	Platform scale Hanging scale	1 1	
	FURNITURE AND FIXTURE CHECKLIST	QUANTITY	REMARKS
	Mobile cart Faucet w/ hose bibb	1 1	
	ADDITIONAL EQUIPMENT AND ENGINEERING TERMINALS	QUANTITY	REMARKS
Outlet, 10A, 2P, 240V, duplex	1	grounding type, parallel slots	

Hospital: Secondary, 25-Bed	ROOM DATA SHEET		Department of Health HEALTH INFRASTRUCTURE SERVICE
Updated Reference: June 1994	Department: DIETARY	Room Title: DIETITIAN'S OFFICE	Reference Sheet Number: 25B-DI-RDS1.1C
TECHNICAL DESIGN DATA:		LAYOUT OF ROOM AND SPACE COMPONENTS:	
DIRECT SERVICES	DESIGN DATA	<p>Scale 1:100 mts.</p>	
Disposal	hospital waste category: A		
Hot water	NA		
Cold water	NA		
Drainage	NA		
Gas	NA		
Compressed air	NA		
Steam	NA		
Others			
DIRECT DEMANDS ON FLOOR AND WALL			
Loading	NA		
Spillage	NA		
Foot traffic	LIGHT : medium : heavy		
Wheel traffic	NA		
Impacts	NA		
Abrasion	NA		
Easy maintenance	essential:DESIRABLE:unnecessary	SPACE DEMANDS (Total Minimum Space Required in sq.m.) : 6.00	
Vibration free	essential:DESIRABLE:unnecessary	Space Components	Minimum Space Required/Component
Door sets	ordinary access door		
Windows	clear, solar control, privacy control	REGULATIONS AND NOTES:	
Internal glazing	clear, privacy control		

Hospital: Secondary, 25-Bed	ROOM DATA SHEET		Department of Health HEALTH INFRASTRUCTURE SERVICE
Updated Reference: June 1994	Department: DIETARY	Room Title: DIETITIAN'S OFFICE	Reference Sheet Number: 25B-DI-RDS1.1A
FUNCTIONAL DESIGN REQUIREMENTS:			
<p>This activity space provides facilities needed for the following activities:</p> <ul style="list-style-type: none"> <li>a. Dietitian calls meeting with staff for the preparation of monthly menu.</li> <li>b. Dietitian reads, writes, and uses telephone in his work station.</li> <li>c. Dietitian receives visitors.</li> <li>d. Dietitian stores, files, and retrieves records.</li> </ul> <p>People Involved:</p> <p>1 x Dietitian 1 x Staff</p> <p>Planning Relationships:</p> <ul style="list-style-type: none"> <li>a. Adjacent to Receiving Area.</li> <li>b. Located in an area within the Kitchen where it shall give the Dietitian a commanding view of work areas and control over possible pilferage of dietary supplies and equipment.</li> </ul>	EQUIPMENT AND ACCESSORY CHECKLIST	QUANTITY	REMARKS
	Calculating machine	1	
	FURNITURE AND FIXTURE CHECKLIST	QUANTITY	REMARKS
	Swivel chair Desk, 750x1200 Steel filing cabinet, 500x700 Chair, upright, stacking	1 1 1 2	
	ADDITIONAL EQUIPMENT AND ENGINEERING TERMINALS	QUANTITY	REMARKS
Rail, curtain, window Outlet, intercom Outlet, 10A, 2P, 240V, duplex Ceiling fan	3 1 2 1	grounding type, parallel slots	

Hospital: Secondary, 25-Bed	ROOM DATA SHEET		Department of Health HEALTH INFRASTRUCTURE SERVICE
Updated Reference: June 1994	Department: DIETARY	Room Title: FOOD CONVEYING HALLWAY	Reference Sheet Number: 25B-DI-RDS1.9C
TECHNICAL DESIGN DATA:		LAYOUT OF ROOM AND SPACE COMPONENTS:	
DIRECT SERVICES	DESIGN DATA	<p>Scale 1:100 mts.</p>	
Disposal	hospital waste category: A		
Hot water	NA		
Cold water	NA		
Drainage	NA		
Gas	NA		
Compressed air	NA		
Steam	NA		
Others			
DIRECT DEMANDS ON FLOOR AND WALL			
Loading	NA		
Spillage	SLIGHT : occasional : frequent		
Foot traffic	light : medium : HEAVY		
Wheel traffic	light : medium : HEAVY		
Impacts	slight : occasional : FREQUENT		
Abrasion	slight : occasional : FREQUENT		
Easy maintenance	ESSENTIAL desirable unnecessary	SPACE DEMANDS (Total Minimum Space Required in sq.m.) : 15.00	
Vibration free	ESSENTIAL desirable unnecessary	Space Components	Minimum Space Required/Component
Door sets	tray truck access		
Windows	nil	REGULATIONS AND NOTES:	
Internal glazing	clear		



Hospital: Secondary, 25-Bed	ROOM DATA SHEET		Department of Health HEALTH INFRASTRUCTURE SERVICE
Updated Reference: June 1994	Department: MAINTENANCE AND MOTORPOOL	Room Title: LOCKER ROOM AND TOILET	Reference Sheet Number: 25B-EN-RDS4.5C
TECHNICAL DESIGN DATA:		LAYOUT OF ROOM AND SPACE COMPONENTS:	
DIRECT SERVICES	DESIGN DATA	<p>Scale 1:100 mts.</p> 	
Disposal	hospital waste category: A		
Hot water	NA		
Cold water	required at toilet fixture		
Drainage	required at toilet fixture & floor		
Gas	NA		
Compressed air	NA		
Steam	NA		
Others			
DIRECT DEMANDS ON FLOOR AND WALL			
Loading	NA	1 Locker, 500x600	
Spillage	NA	2 Lavatory	
Foot traffic	LIGHT : medium : heavy	3 Water closet	
Wheel traffic	NA	SPACE DEMANDS (Total Minimum Space Required in sq.m.) : 6.30	
Impacts	NA	Space Components	Minimum Space Required/Component
Abrasion	NA	Locker Room	3.35 sq.m.
Easy maintenance	ESSENTIAL desirable unnecessary	Toilet and Bath	2.94 sq.m.
Vibration free	ESSENTIAL desirable unnecessary		
Door sets	ordinary access door		
Windows	clear, solar control, privacy con-	REGULATIONS AND NOTES:	
	trol		
Internal glazing	nil		

Hospital: Secondary, 25-Bed	ROOM DATA SHEET		Department of Health HEALTH INFRASTRUCTURE SERVICE
Updated Reference: June 1994	Department: MAINTENANCE AND MOTORPOOL	Room Title: GARAGE	Reference Sheet Number: 25B-EN-RDS4.4A
FUNCTIONAL DESIGN REQUIREMENTS:			
<p>This activity space provides facilities needed for the following activities:</p> <ul style="list-style-type: none"> <li>a. Driver/Mechanic checks/repairs hospital vehicle.</li> <li>b. Parking of hospital vehicle.</li> <li>c. Utility Worker assists Driver/Mechanic in repair works.</li> </ul> <p>People Involved:</p> <ul style="list-style-type: none"> <li>1 x Driver/Mechanic</li> <li>1 x Utility Worker</li> </ul> <p>Planning Relationships:</p> <ul style="list-style-type: none"> <li>a. Close to Maintenance Work Area.</li> <li>b. Close to Storage.</li> <li>c. Close to Staff Room.</li> </ul>	EQUIPMENT AND ACCESSORY CHECKLIST	QUANTITY	REMARKS
	FURNITURE AND FIXTURE CHECKLIST	QUANTITY	REMARKS
	Slop sink	1	
	ADDITIONAL EQUIPMENT AND ENGINEERING TERMINALS	QUANTITY	REMARKS

Hospital: Secondary, 25-Bed	ROOM DATA SHEET		Department of Health HEALTH INFRASTRUCTURE SERVICE
Updated Reference: June 1994	Department: MAINTENANCE AND MOTORPOOL	Room Title: STORAGE	Reference Sheet Number: 25B-EN-RDS4.3C
TECHNICAL DESIGN DATA:		LAYOUT OF ROOM AND SPACE COMPONENTS:	
DIRECT SERVICES	DESIGN DATA	<p>Scale 1:100 mts.</p>	
Disposal	hospital waste category: A		
Hot water	NA		
Cold water	NA		
Drainage	NA		
Gas	NA		
Compressed air	NA		
Steam	NA		
Others			
DIRECT DEMANDS ON FLOOR AND WALL			
Loading	light : medium : HEAVY		
Spillage	NA		
Foot traffic	light : MEDIUM : heavy		
Wheel traffic	NA		
Impacts	slight : OCCASIONAL : frequent		
Abrasion	slight : OCCASIONAL : frequent		
Easy maintenance	essential:DESIRABLE:unnecessary		
Vibration free	essential:DESIRABLE:unnecessary		
Door sets	equipment access	SPACE DEMANDS (Total Minimum Space Required in sq.m.) : 6.30	
		Space Components	Minimum Space Required/Component
Windows	clear	REGULATIONS AND NOTES:	
Internal glazing	nil		





Hospital: Secondary, 25-Bed	ROOM DATA SHEET		Department of Health HEALTH INFRASTRUCTURE SERVICE
Updated Reference: June 1994	Department: MAINTENANCE AND MOTORPOOL	Room Title: MAINTENANCE WORK AREA	Reference Sheet Number: 25B-EN-RDS4.2A
FUNCTIONAL DESIGN REQUIREMENTS:			
<p>This activity space provides facilities needed for the following activities:</p> <ul style="list-style-type: none"> <li>a. Cleaning of hospital equipment.</li> <li>b. Testing of hospital equipment.</li> <li>c. Repair (welding and carpentry works) of hospital equipment.</li> <li>d. Repair of hospital furnitures and other woodworks.</li> <li>e. Assembly of furniture and other woodworks.</li> </ul> <p>People Involved:</p> <ul style="list-style-type: none"> <li>1 x Engineer / Supervisor</li> <li>1 x Utility Worker</li> <li>1 x Driver / Mechanic.</li> </ul> <p>Planning Relationships:</p> <ul style="list-style-type: none"> <li>a. Close to Garage.</li> <li>b. Close to Storage.</li> <li>c. Close to Staff Room.</li> </ul>	EQUIPMENT AND ACCESSORY CHECKLIST	QUANTITY	REMARKS
	Mechanical tools Electrical tools Carpentry tools	1 1 1	set set set
	FURNITURE AND FIXTURE CHECKLIST	QUANTITY	REMARKS
	Counter, 900mm high, open below Counter, 900mm high, with cabinets below Wall cabinets Stool	1	
	ADDITIONAL EQUIPMENT AND ENGINEERING TERMINALS	QUANTITY	REMARKS
Outlet, 10A, 2P, 240V, duplex	4	grounding type, parallel slots	

Hospital: Secondary, 25-Bed	ROOM DATA SHEET		Department of Health HEALTH INFRASTRUCTURE SERVICE
Updated Reference: June 1994	Department: MAINTENANCE AND MOTORPOOL	Room Title: STAFF ROOM	Reference Sheet Number: 25B-EN-RDS4 1C
TECHNICAL DESIGN DATA		LAYOUT OF ROOM AND SPACE COMPONENTS:	
DIRECT SERVICES	DESIGN DATA	<p>Scale 1:100 mts.</p>	
Disposal	hospital waste category: A		
Hot water	NA		
Cold water	NA		
Drainage	NA		
Gas	NA		
Compressed air	NA		
Steam	NA		
Others			
DIRECT DEMANDS ON FLOOR AND WALL			
Loading	NA		
Spillage	NA		
Foot traffic	LIGHT : medium : heavy		
Wheel traffic	NA		
Impacts	NA		
Abrasion	NA		
Easy maintenance	essential:DESIRABLE unnecessary	SPACE DEMANDS (Total Minimum Space Required in sq.m.) : 10.26	
Vibration free	essential:desirable:UNNECESSARY	Space Components	Minimum Space Required/Component
Door sets	ordinary access door		
Windows	clear: solar control	REGULATIONS AND NOTES:	
Internal glazing	nil		

Hospital Secondary, 25-Bed	ROOM DATA SHEET		Department of Health HEALTH INFRASTRUCTURE SERVICE
Updated Reference: June 1994	Department: MAINTENANCE AND MOTORPOOL	Room Title: GARAGE	Reference Sheet Number: 25B-EN-RDS4.4C
TECHNICAL DESIGN DATA:		LAYOUT OF ROOM AND SPACE COMPONENTS:	
DIRECT SERVICES	DESIGN DATA	<p>Scale 1:100 mts.</p> <p>Key 1 Slop sink 2 Screened openings</p>	
Disposal	hospital waste category : A		
Hot water	NA		
Cold water	required at slop sink		
Drainage	required at slop sink and floor		
Gas	NA		
Compressed air	NA		
Steam	NA		
Others			
DIRECT DEMANDS ON FLOOR AND WALL			
Loading	light : medium : HEAVY		
Spillage	slight : occasional : FREQUENT		
Foot traffic	light : MEDIUM : heavy		
Wheel traffic	NA		
Impacts	slight : occasional : FREQUENT		
Abrasion	slight : occasional : FREQUENT	SPACE DEMANDS (Total Minimum Space Required in sq.m) : 36.00	
Easy maintenance	ESSENTIAL desirable unnecessary	Space Components	Minimum Space Required/Component
Vibration free	essential desirable UNNECESSARY		
Door sets	vehicle access		
Windows	screened openings	REGULATIONS AND NOTES:	
Internal glazing	nil		

Hospital: Secondary, 25-Bed	R O O M   D A T A   S H E E T		Department of Health HEALTH INFRASTRUCTURE SERVICE	
Updated Reference: June 1984	Department: MAINTENANCE AND MOTORPOOL	Room Title: LOCKER ROOM AND TOILET	Reference Sheet Number: 25B-EN-RDS4.5A	
FUNCTIONAL DESIGN REQUIREMENTS:				
<p>This activity space provides facilities needed for the following activities:</p> <ul style="list-style-type: none"> <li>a. Maintenance staff to change clothes in Locker Room &amp; Toilet.</li> <li>b. Maintenance staff to bathe in Toilet.</li> <li>c. Maintenance staff to store clothing and personal effects in the Locker Room.</li> </ul> <p>People involved:</p> <p>Maintenance Staff</p> <p>Planning Relationships:</p> <ul style="list-style-type: none"> <li>a. Close to Staff Room.</li> <li>b. Close to Work Area.</li> </ul>		EQUIPMENT AND ACCESSORY CHECKLIST	QUANTITY	REMARKS
		FURNITURE AND FIXTURE CHECKLIST	QUANTITY	REMARKS
		Locker, 500x600 Water closet Lavatory	3 1 1	
		ADDITIONAL EQUIPMENT AND ENGINEERING TERMINALS	QUANTITY	REMARKS

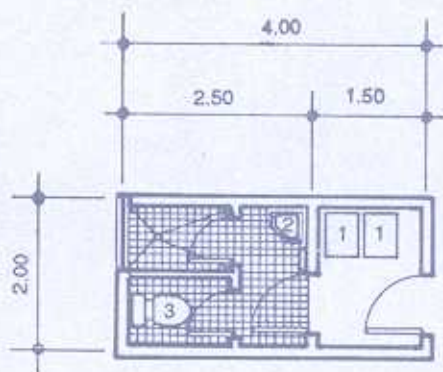


Hospital: Secondary, 25-Bed	R O O M   D A T A   S H E E T		Department of Health HEALTH INFRASTRUCTURE SERVICE
Updated Reference: June 1994	Department: MAINTENANCE AND MOTORPOOL	Room Title: STAFF ROOM	Reference Sheet Number: 25B-EN-RDS4.1A

FUNCTIONAL DESIGN REQUIREMENTS			
<p>This activity space provides facilities needed for the following activities:</p> <ul style="list-style-type: none"> <li>a. Maintenance staff makes requisition for spare parts.</li> <li>b. Maintenance staff updates records.</li> <li>c. Maintenance staff reads and writes reports.</li> <li>d. Station area for staff on call.</li> </ul> <p>People involved:</p> <ul style="list-style-type: none"> <li>1 x Engineer / Supervisor</li> <li>1 x Utility Worker</li> <li>1 x Driver / Mechanic</li> </ul> <p>Planning Relationships:</p> <ul style="list-style-type: none"> <li>a. Close to Garage and Maintenance Work Area.</li> <li>b. Close to Locker Room and Toilet</li> </ul>	EQUIPMENT AND ACCESSORY CHECKLIST	QUANTITY	REMARKS
	FURNITURE AND FIXTURE CHECKLIST	QUANTITY	REMARKS
	Desk, 750x1200 Bench, 400x1500 Chair, upright, stacking Wall cabinets Counter, 900mm high, open below Steel filing cabinet, 500x700	1 1 2  1	
	ADDITIONAL EQUIPMENT AND ENGINEERING TERMINALS	QUANTITY	REMARKS
Rail, curtain, window Outlet, intercom Outlet, 10A, 2P, 240V, duplex	2 1 3	grounding type, parallel slots	

Hospital: Secondary, 25-Bed	ROOM DATA SHEET		Department of Health HEALTH INFRASTRUCTURE SERVICE
Updated Reference: June 1994	Department: ENGINEERING AND MAINTENANCE	Room Title: ELECTRICAL ROOM	Reference Sheet Number: 25B-EN-RDS3.1A
FUNCTIONAL DESIGN REQUIREMENTS:			
<p>This activity space provides facilities needed for the following activities:</p> <ul style="list-style-type: none"> <li>a. Testing and inspection of electrical distribution equipment.</li> <li>b. Repair/replacement of defective equipment.</li> </ul> <p>People Involved:</p> <ul style="list-style-type: none"> <li>1 x Electrician</li> <li>1 x Building Maintenance Worker</li> </ul> <p>Planning Relationships:</p> <ul style="list-style-type: none"> <li>a. Easy access to qualified persons.</li> </ul>	EQUIPMENT AND ACCESSORY CHECKLIST	QUANTITY	REMARKS
	Electrical panels		
	FURNITURE AND FIXTURE CHECKLIST	QUANTITY	REMARKS
	ADDITIONAL EQUIPMENT AND ENGINEERING TERMINALS	QUANTITY	REMARKS
Outlet, 10A, 2P, 240V	1	grounding type, parallel slots	
Heat detector	1		

Hospital: Secondary, 25-Bed	ROOM DATA SHEET		Department of Health HEALTH INFRASTRUCTURE SERVICE
Updated Reference: June 1994	Department: LINEN AND LAUNDRY	Room Title: LOCKER ROOM AND TOILET	Reference Sheet Number: 25B-EN-RDS2.4C
TECHNICAL DESIGN DATA:		LAYOUT OF ROOM AND SPACE COMPONENTS:	
DIRECT SERVICES	DESIGN DATA	<p>Scale 1:100 mts.</p>  <p>Key</p> <p>1 Locker, 500x600 2 Lavatory 3 Water closet</p>	
Disposal	hospital waste category : A		
Hot water	NA		
Cold water	required at toilet and bath		
Drainage	required at toilet fixtures and floor		
Gas	NA		
Compressed air	NA		
Steam	NA		
Others			
DIRECT DEMANDS ON FLOOR AND WALL			
Loading	NA	Space Components	Minimum Space Required/Component
Spillage	slight : OCCASIONAL : frequent		
Foot traffic	light : MEDIUM : heavy		
Wheel traffic	NA		
Impacts	NA		
Abrasion	NA		
Easy maintenance	essential:DESIRABLE:unnecessary		
Vibration free	essential:DESIRABLE:unnecessary		
Door sets	ordinary access door		
Windows	clear, solar control	REGULATIONS AND NOTES:	
Internal glazing	nil		

Hospital: Secondary, 25-Bed	ROOM DATA SHEET		Department of Health HEALTH INFRASTRUCTURE SERVICE
Updated Reference: June 1994	Department: LINEN AND LAUNDRY	Room Title: LOCKER ROOM AND TOILET	Reference Sheet Number: 25B-EN-RDS2.4A
FUNCTIONAL DESIGN REQUIREMENTS:			
<p>This activity space provides facilities needed for the following activities:</p> <ul style="list-style-type: none"> <li>a. Laundry Unit Employees change from street clothes to work clothes.</li> <li>b. Laundry Unit Employees perform personal hygiene activities.</li> <li>c. Laundry Unit Employees store and retrieve personal stuff in the lockers.</li> <li>d. Use of Toilet Facilities.</li> </ul> <p>People Involved:</p> <p>Laundry Unit Workers</p> <p>Planning Relationships:</p> <ul style="list-style-type: none"> <li>a. Located within the Laundry Department.</li> </ul>	EQUIPMENT AND ACCESSORY CHECKLIST	QUANTITY	REMARKS
	FURNITURE AND FIXTURE CHECKLIST	QUANTITY	REMARKS
	Locker, 500x600 Water closet Lavatory	2 1 1	
	ADDITIONAL EQUIPMENT AND ENGINEERING TERMINALS	QUANTITY	REMARKS
Rail, curtain, window Outlet, intercom	1 1		



Hospital: Secondary, 25-Bed	ROOM DATA SHEET		Department of Health HEALTH INFRASTRUCTURE SERVICE
Updated Reference: June 1994	Department: LINEN AND LAUNDRY	Room Title: PRESSING AND IRONING AREA	Reference Sheet Number: 25B-EN-RDS2.3A
FUNCTIONAL DESIGN REQUIREMENTS:			
<p>This activity space provides facilities needed for the following activities:</p> <ul style="list-style-type: none"> <li>a. Laundry worker inspects linen brought in from the drying area and segregates torn linen to be mended.</li> <li>b. Laundry worker shakes out, presses and irons clean linen brought in from the drying area.</li> </ul> <p>People Involved:</p> <p>2 x Laundry Worker</p> <p>Planning Relationships:</p> <ul style="list-style-type: none"> <li>a. Adjacent to Sorting and Washing Area.</li> <li>b. Close to Linen Office.</li> </ul>	<p>EQUIPMENT AND ACCESSORY CHECKLIST</p> <p>Press Flat work ironer Marking machine</p>	<p>QUANTITY</p> <p>1 1 1</p>	<p>REMARKS</p>
	<p>FURNITURE AND FIXTURE CHECKLIST</p> <p>Uniform rack Ironing board Shakeout table Table, 660x2400 Table, 600x1200</p>	<p>QUANTITY</p> <p>2 1 1 1 1</p>	<p>REMARKS</p> <p>with sloping sides</p>
	<p>ADDITIONAL EQUIPMENT AND ENGINEERING TERMINALS</p> <p>Outlet, 10A, 2P, 240V, duplex</p>	<p>QUANTITY</p> <p>5</p>	<p>REMARKS</p> <p>grounding type, parallel slots</p>

Hospital: Secondary, 25-Bed	ROOM DATA SHEET		Department of Health HEALTH INFRASTRUCTURE SERVICE
Updated Reference: June 1994	Department: LINEN AND LAUNDRY	Room Title: SORTING AND WASHING AREA	Reference Sheet Number: 25B-EN-RDS2.2A
FUNCTIONAL DESIGN REQUIREMENTS:			
<p>This activity space provides facilities needed for the following activities:</p> <ul style="list-style-type: none"> <li>a. Laundry worker counts soiled linen with Nursing attendant and tallies the number with the linen list.</li> <li>b. Laundry worker inspects soiled linen and segregate those that need repair or those to be condemned, and linens to be washed.</li> <li>c. Linens are washed by Laundry Workers.</li> </ul> <p>People Involved:</p> <p>2 x Laundry Workers 1 x Nursing Attendant</p> <p>Planning Relationships:</p> <ul style="list-style-type: none"> <li>a. Adjacent to Pressing and Ironing Area.</li> <li>b. Close to Linen Office</li> </ul>	EQUIPMENT AND ACCESSORY CHECKLIST	QUANTITY	REMARKS
	FURNITURE AND FIXTURE CHECKLIST	QUANTITY	REMARKS
	Open shelving Sorting bins Tiled washing troughs		
	ADDITIONAL EQUIPMENT AND ENGINEERING TERMINALS	QUANTITY	REMARKS
	Outlet, 10A, 2P, 240V, duplex	2	grounding type parallel slots

Hospital: Secondary, 25-Bed	ROOM DATA SHEET		Department of Health HEALTH INFRASTRUCTURE SERVICE
Updated Reference: June 1994	Department: LINEN AND LAUNDRY	Room Title: LINEN OFFICE	Reference Sheet Number: 25B-EN-RDS2.1A
FUNCTIONAL DESIGN REQUIREMENTS:			
<p>This activity space provides facilities needed for the following activities:</p> <ul style="list-style-type: none"> <li>a. Laundry worker classifies, counts and records clean linen in the log book.</li> <li>b. Linen room-in-charge repairs or mends torn linen and records in the log book.</li> <li>c. Head of unit receives linen issue slip and prepares linen items for issuance.</li> <li>d. Laundry worker packs linen and delivers to wards.</li> <li>e. Head of linen unit prepares forms for purchase of materials.</li> <li>f. Linen unit receive materials and do the sewing of linen and other necessary preparations.</li> <li>g. Head of unit prepares memo receipt and notifies the requisitioning unit when materials are ready.</li> <li>h. Head of linen unit retrieves and stores original copies of forms in file.</li> </ul> <p>People Involved:</p> <p>1 x Laundry Unit Head 2 x Laundry Worker</p> <p>Planning Relationships:</p> <ul style="list-style-type: none"> <li>a. Close to Sorting and Washing Area.</li> <li>b. Close to Pressing and Ironing Area.</li> </ul>	EQUIPMENT AND ACCESSORY CHECKLIST	QUANTITY	REMARKS
	Sewing machine	1	
	FURNITURE AND FIXTURE CHECKLIST	QUANTITY	REMARKS
	Chair, upright, stacking Counter, 750mm high, open below Counter, 900mm high, with cabinets below Shelving, with bins Counter, 900mm high, with shelving below Transaction counter	4	
	ADDITIONAL EQUIPMENT AND ENGINEERING TERMINALS	QUANTITY	REMARKS
Outlet, intercom Outlet, 10A, 2P, 240V, duplex  Electric fan	1 4 2	grounding type, parallel slots	

Hospital: Secondary, 25-Bed	ROOM DATA SHEET		Department of Health HEALTH INFRASTRUCTURE SERVICE
Updated Reference: June 1994	Department: PROPERTY AND SUPPLY	Room Title: CENTRAL SUPPLY STORAGE	Reference Sheet Number: 25B-EN-RDS1.1C
TECHNICAL DESIGN DATA:		LAYOUT OF ROOM AND SPACE COMPONENTS.	
DIRECT SERVICES	DESIGN DATA	Scale 1:200 mts	
Disposal	hospital waste category : A,D,G	<p>Key</p> <ol style="list-style-type: none"> <li>Adjustable steel shelving with tracks, upper shelves 450mm deep, lower shelves 600mm deep</li> <li>Adjustable steel shelving</li> <li>Typewriter table</li> <li>Swivel chair</li> <li>Desk, 750x1200</li> <li>Chair, upright, stacking</li> <li>Steel filing cabinet, 500x700</li> <li>Cabinet, 600x1200</li> <li>Push cart</li> <li>Wooden palette</li> <li>Bulk Food (Dry) Storage</li> <li>Pharmacy/Anesthesia Storage</li> <li>Bulk Storage Area</li> <li>General Storage Area</li> <li>Empty Oxygen Tank Storage Area</li> <li>Filled Oxygen Tank Storage Area</li> <li>Loading Dock</li> <li>Ramp</li> <li>Steps</li> <li>Office Area</li> </ol>	
Hot water	NA		
Cold water	NA		
Drainage	required at floor		
Gas	NA		
Compressed air	NA		
Steam	NA		
Others			
DIRECT DEMANDS ON FLOOR AND WALL:		SPACE DEMANDS (Total Minimum Space Required in sq.m.) : 72.00	
Loading	light : medium : HEAVY	Space Components	Minimum Space Required/Component
Spillage	SLIGHT : occasional : frequent	Office	9.00 sq.m.
Foot traffic	light : medium : HEAVY	Bulk and General Storage	45.00 sq.m.
Wheel traffic	light : medium : HEAVY	Bulk Food (Dry) Storage	9.00 sq.m.
Impacts	slight : occasional : FREQUENT	Pharmacy/Anesthesia Storage	9.00 sq.m.
Abrasion	slight : occasional : FREQUENT	REGULATIONS AND NOTES:	
Easy maintenance	ESSENTIAL:desirable:unnecessary		
Vibration free	ESSENTIAL:desirable:unnecessary		
Door sets	trolley access		
Windows	clear, solar control		
Internal glazing	clear, privacy control		





Hospital: Secondary, 25-Bed	ROOM DATA SHEET		Department of Health HEALTH INFRASTRUCTURE SERVICE
Updated Reference: June 1994	Department: LINEN AND LAUNDRY	Room Title: PRESSING AND IRONING AREA	Reference Sheet Number: 25B-EN-RDS2.3C
TECHNICAL DESIGN DATA:		LAYOUT OF ROOM AND SPACE COMPONENTS:	
DIRECT SERVICES	DESIGN DATA	<p>Scale 1:100 mts</p> <p>6.00</p> <p>4.00</p> <p>2.00</p> <p>6.00</p> <p>4.00</p> <p>2.00</p> <p>Key</p> <p>1 Marking machine 2 Uniform rack 3 Ironing board 4 Press 5 Shakeout table 6 Flat work ironer 7 Table, 660x2400 8 Table, 600x1200</p>	
Disposal	hospital waste category : A		
Hot water	NA		
Cold water	NA		
Drainage	NA		
Gas	NA		
Compressed air	NA		
Steam	NA		
Others			
DIRECT DEMANDS ON FLOOR AND WALL			
Loading	light : MEDIUM : heavy		
Spillage	NA		
Foot traffic	light : MEDIUM : heavy		
Wheel traffic	light : MEDIUM : heavy		
Impacts	NA		
Abrasion	NA		
Easy maintenance	essential-DESIRABLE-unnecessary	SPACE DEMANDS (Total Minimum Space Required in sq.m.) : 28.00	
Vibration free	essential-DESIRABLE-unnecessary	Space Components	Minimum Space Required/Component
Door sets	equipment, trolley access		
Windows	clear	REGULATIONS AND NOTES:	
Internal glazing	nil		

Hospital: Secondary, 25-Bed	ROOM DATA SHEET		Department of Health HEALTH INFRASTRUCTURE SERVICE
Updated Reference: June 1994	Department: LINEN AND LAUNDRY	Room Title: SORTING AND WASHING AREA	Reference Sheet Number: 25B-EN-RDS2.2C
TECHNICAL DESIGN DATA:		LAYOUT OF ROOM AND SPACE COMPONENTS:	
DIRECT SERVICES	DESIGN DATA		
Disposal	hospital waste category : A,B,E		
Hot water	NA		
Cold water	required at washing troughs		
Drainage	required at washing troughs & floor		
Gas	NA		
Compressed air	NA		
Steam	NA		
Others:			
DIRECT DEMANDS ON FLOOR AND WALL			
Loading	LIGHT : medium : heavy		
Spillage	slight : occasional : FREQUENT		
Foot traffic	light : medium : HEAVY		
Wheel traffic	light : medium : HEAVY		
Impacts	NA		
Abrasion	NA		
Easy maintenance	essential:DESIRABLE:unnecessary	SPACE DEMANDS (Total Minimum Space Required in sq.m.) 36.00	
Vibration free	essential:DESIRABLE:unnecessary	Space Components	Minimum Space Required/Component
Door sets	equipment, trolley access	Work Area	23.00 sq.m.
		Laundry Supply Storage	3.00 sq.m.
Windows	clear	Wash Area	10.00 sq.m.
		REGULATIONS AND NOTES:	
Internal glazing	nil		

Hospital: Secondary, 25-Bed	ROOM DATA SHEET		Department of Health HEALTH INFRASTRUCTURE SERVICE
Updated Reference: June 1994	Department: LINEN AND LAUNDRY	Room Title: LINEN OFFICE	Reference Sheet Number: 25B-EN-RDS2.1C
TECHNICAL DESIGN DATA:		LAYOUT OF ROOM AND SPACE COMPONENTS:	
DIRECT SERVICES	DESIGN DATA	<p>Scale: 1:100 mts.</p>	
Disposal	hospital waste category: A		
Hot water	NA		
Cold water	NA		
Drainage	NA		
Gas	NA		
Compressed air	NA		
Steam	NA		
Others			
DIRECT DEMANDS ON FLOOR AND WALL			
Loading	light : MEDIUM : heavy		
Spillage	NA		
Foot traffic	light : MEDIUM : heavy		
Wheel traffic	light : MEDIUM : heavy		
Impacts	NA		
Abrasion	NA		
Easy maintenance	essential;DESIRABLE;unnecessary	SPACE DEMANDS (Total Minimum Space Required in sq.m.) : 36.00	
Vibration free	essential;DESIRABLE;unnecessary	Space Components	Minimum Space Required/Component
Door sets	wheelchair access		
Windows	clear, solar control	REGULATIONS AND NOTES:	
Internal glazing	clear		



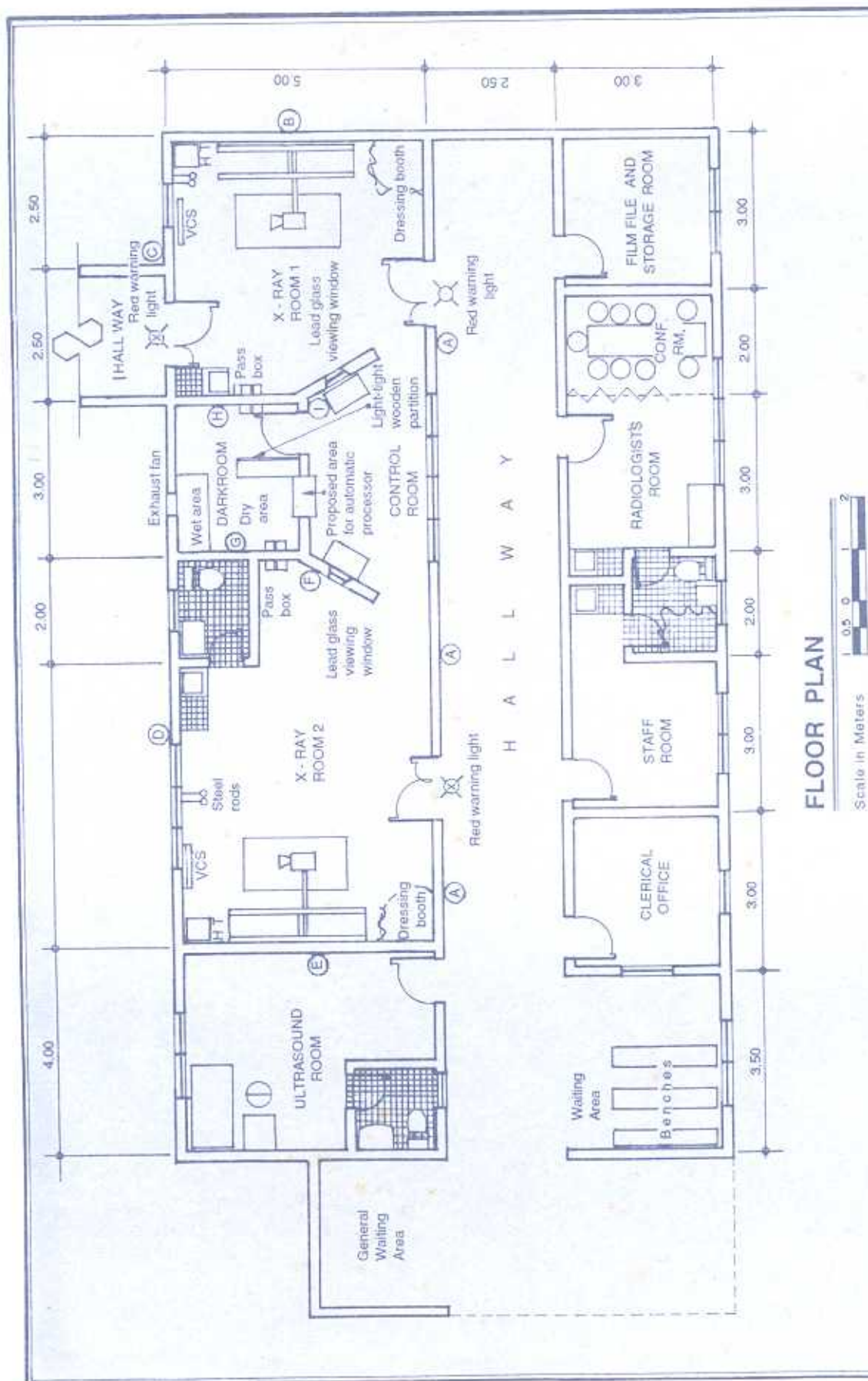


Figure G-8. RECOMMENDED DESIGN OF AN X-RAY FACILITY FOR A PROVINCIAL HOSPITAL