

VOLUME 3 - SCHEMATIC PLANS AND TECHNICAL REQUIREMENTS
OF 25-BED HOSPITAL

3.4 - NURSING Service Facility

Hospital: Secondary, 25-Bed	ROOM DATA SHEET		Department of Health HEALTH INFRASTRUCTURE SERVICE
Updated Reference: June 1994	Department: NURSING UNIT	Room Title: UTILITY ROOM	Reference Sheet Number: 25B-NU-RDS1.3B
TECHNICAL DESIGN DATA:			
ENVIRONMENTAL CONDITIONS	DESIGN DATA	ENVIRONMENTAL CONDITIONS	DESIGN DATA
AIR		LIGHTING AND VISUAL	
Outdoor air temperature (deg. C)	ave. local station temp. reading	General illumination (LUX)	250
Room Temperature (deg. C)	atmospheric	Night illumination (LUX)	NA
Mechanical ventilation:		Task illumination (LUX)	NA
Volume (cu.m./hr.-person)	NA	Colour rendering	essential:DESIRABLE:unnecessary
Velocity (m./hr.)	NA	Standby light	essential:DESIRABLE:unnecessary
Pressure:		Emergency light	essential:DESIRABLE:unnecessary
Exhaust (psi)	NA	Daylight	essential:desirable:UNNECESSARY
Inlet (psi)	NA	View out	essential:DESIRABLE:unnecessary
% Dust filtration	NA	Privacy	essential:DESIRABLE:unnecessary
Humidity (% RH)	NA	Black out	essential:desirable:UNNECESSARY
Cooling load (TR)	NA		
SOUND		SAFETY	
Acceptable sound level (db)	60	Accessible hot surface:	NA
Speech privacy	essential:DESIRABLE:unnecessary	Maximum temperature (deg. C)	NA
Quality which cannot be	tonal impact	Domestic hot water:	at sink
tolerated		Maximum temperature (deg. C)	70
		Access limit	medical staff
		Fire risk	LOW : medium : high
		Other risks	NA

Hospital: Secondary, 25-Bed	ROOM DATA SHEET		Department of Health HEALTH INFRASTRUCTURE SERVICE
Updated Reference: June 1994	Department: NURSING UNIT	Room Title: TYPICAL 2-BED WARD	Reference Sheet Number: 25B-NU-RDS2.1A

FUNCTIONAL DESIGN REQUIREMENTS:

<p>This activity space provides facilities needed for the following activities:</p> <ul style="list-style-type: none"> a. Patient may arrive on foot, in a wheelchair or on a stretcher trolley. b. Patient is transferred to a hospital bed from a wheelchair or a stretcher trolley and vice versa. c. Patient undresses/dresses in the vicinity of hospital bed, with or without assistance. d. Patient takes meals in bed or in sitting area. e. Patient receives visitors. f. Patient stores clothing and other personal belongings. g. Patient requires privacy. h. Use of toilet and bath. i. Use of monitoring/diagnostic equipment. j. Physicians and nurses check on patients. k. Hand washing and other clean-up activities. l. Patient is admitted under single occupancy basis for isolation purposes. <p>People Involved:</p> <ul style="list-style-type: none"> 2 x Patients 2 x Visitors 1 x Resident Physician 1 x Nurse or Nursing Aide <p>Planning Relationships:</p> <ul style="list-style-type: none"> a. Close to Nurse Station. b. Distant to Outpatient Department c. Close to Surgical/Delivery Service Complex. <p>This activity space provides facilities needed for the delivery of General Patient Care.</p>	EQUIPMENT AND ACCESSORY CHECKLIST	QUANTITY	REMARKS
	FURNITURE AND FIXTURE CHECKLIST	QUANTITY	REMARKS
	Adjustable hospital bed Overbed table Chair, upright, stacking Footstool Bedside cabinet, 500x600 Lavatory Water closet	2 2 2 2 1 1 1	
	ADDITIONAL EQUIPMENT AND ENGINEERING TERMINALS	QUANTITY	REMARKS
	1 2 5 2 1 2 1 1	grounding type, parallel slots fluorescent, 20W, with pendant switch	

Hospital: Secondary, 25-Bed	ROOM DATA SHEET		Department of Health HEALTH INFRASTRUCTURE SERVICE
Updated Reference: June 1994	Department: NURSING UNIT	Room Title: TYPICAL 4-BED WARD	Reference Sheet Number: 25B-NU-RDS2 2A

FUNCTIONAL DESIGN REQUIREMENTS:

<p>This activity space provides facilities needed for the following activities:</p> <ul style="list-style-type: none"> a. Patient may arrive on foot, in a wheelchair or on a stretcher trolley. b. Patient is transferred to a hospital bed from a wheelchair or a stretcher trolley and vice versa. c. Patient undresses/dresses in the vicinity of hospital bed, with or without assistance. d. Patient takes meal in bed or in sitting area. e. Patient receives visitors. f. Patient stores clothing and other personal belongings. g. Patient requires privacy. h. Use of toilet and bath. i. Use of monitoring/diagnostic equipment. j. Physicians and nurses check on patients. k. Hand washing and other clean-up activities. <p>People Involved:</p> <ul style="list-style-type: none"> 4 x Patients 4 x Visitors 1 x Resident Physician 1 x Nurse or Attending Aide <p>Planning Relationships:</p> <ul style="list-style-type: none"> a. Close to Nurse Station. b. Distant to Outpatient Department. c. Close to Surgical/Delivery Service Complex. <p>This activity space provides facilities needed for the delivery of General Patient Care</p>	EQUIPMENT AND ACCESSORY CHECKLIST	QUANTITY	REMARKS
	FURNITURE AND FIXTURE CHECKLIST	QUANTITY	REMARKS
	Adjustable hospital bed Overbed table Chair, upright, stacking Footstool Bedside cabinet, 500x600 Lavatory Water Closet	4 4 4 4 4 2 1	
	ADDITIONAL EQUIPMENT AND ENGINEERING TERMINALS	QUANTITY	REMARKS
Rail, curtain, window Rail, curtain, cubicle Outlet, 10A, 2P, 240V, duplex Bed lamp, with night lamp Outlet, 15A, 2P, 240V, single	2 4 10 4 1	grounding type, parallel slots fluorescent, 20W, with pendant switch	

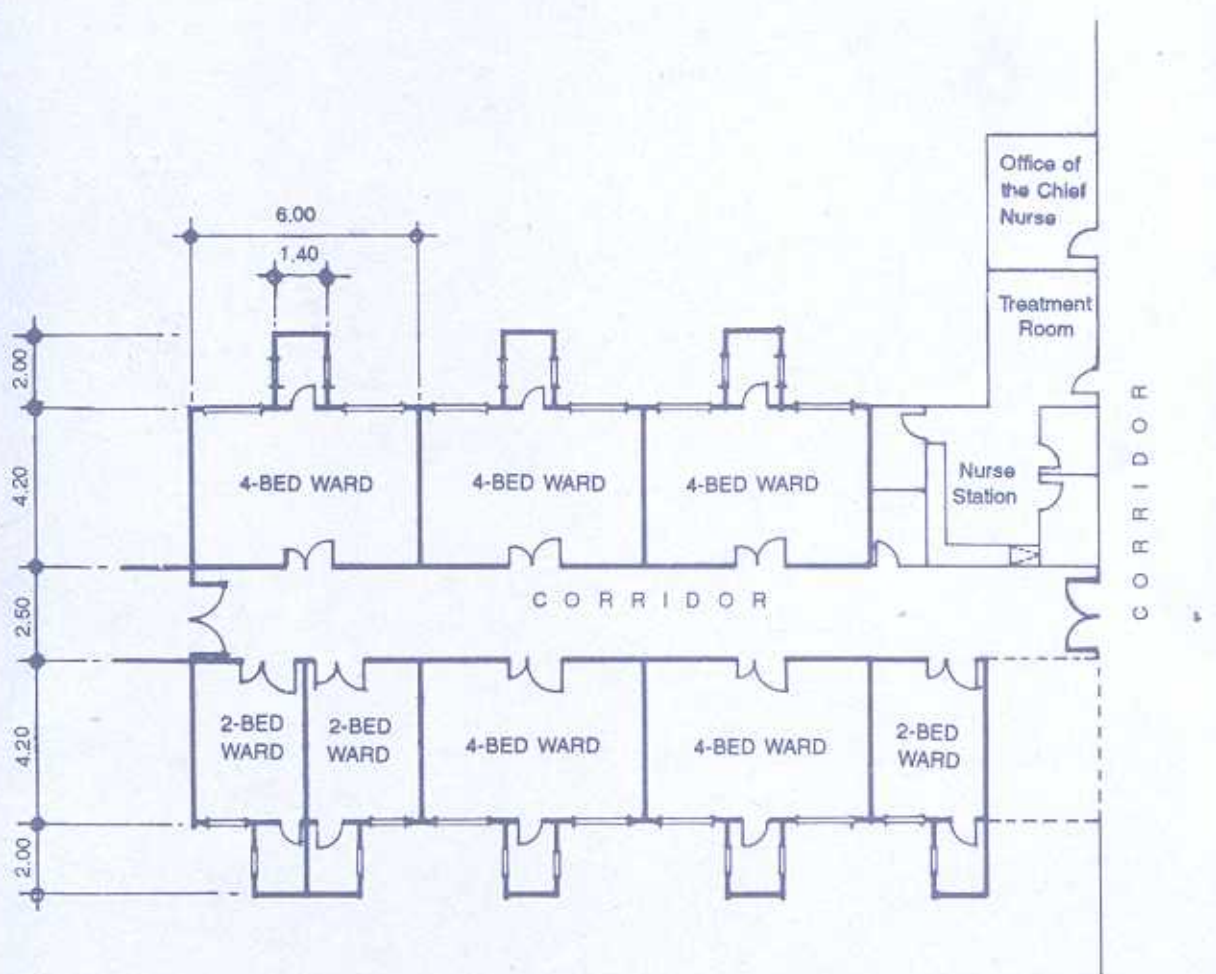
Hospital: Secondary, 25-Bed	ROOM DATA SHEET		Department of Health HEALTH INFRASTRUCTURE SERVICE
Updated Reference: June 1994	Department: NURSING UNIT	Room Title: UTILITY ROOM	Reference Sheet Number: 25B-NU-RDS1.3A
FUNCTIONAL DESIGN REQUIREMENTS:			
<p>This activity space provides facilities needed for the following activities:</p> <ul style="list-style-type: none"> a. Nurse performs clean-up related activities in order to maintain order and hygiene in the Nurse Station. b. Nurse stores and retrieves ward supplies. c. Nurse maintains hospital equipment utilized in the ward area. <p>People Involved:</p> <p>1 x Nurse</p> <p>Planning Relationships:</p> <ul style="list-style-type: none"> a. Adjacent to Nurse Station. 	EQUIPMENT AND ACCESSORY CHECKLIST	QUANTITY	REMARKS
	FURNITURE AND FIXTURE CHECKLIST	QUANTITY	REMARKS
	Counter, 900mm high, with cabinets below Wall hung cabinets, 300mm deep Sink in counter with gooseneck spout and knee or elbow control	1	
	ADDITIONAL EQUIPMENT AND ENGINEERING TERMINALS	QUANTITY	REMARKS
Outlet, 10A, 2P, 240V, duplex	1	grounding type, parallel slots	

Hospital: Secondary, 25-Bed	ROOM DATA SHEET		Department of Health HEALTH INFRASTRUCTURE SERVICE
Updated Reference: June 1994	Department: NURSING UNIT	Room Title: TYPICAL 2-BED WARD	Reference Sheet Number: 25B-NU-RDS2.1C
TECHNICAL DESIGN DATA		LAYOUT OF ROOM AND SPACE COMPONENTS:	
DIRECT SERVICES	DESIGN DATA	<p>Scale 1:100 mts.</p> <p>Key (Plan)</p> <ul style="list-style-type: none">1 Adjustable hospital bed2 Chair, upright, stacking3 Nurses' call station w/pendant switch4 Bedside cabinet5 Bed light with night light6 Overbed table7 Footstool8 Curtain and rod9 Nurses' call station (emergency)10 Nurses' call dome light	
Disposal	hospital waste category : A,B,E,F		
Hot water	required at lavatory		
Cold water	required at toilet fixtures		
Drainage	required at toilet fixtures & floor		
Gas	oxygen outlet		
Compressed air	suction outlet with vacuum devices		
Steam	NA		
Others			
DIRECT DEMANDS ON FLOOR AND WALL			
Loading	NA		
Spillage	SLIGHT : occasional : frequent		
Foot traffic	light : MEDIUM : heavy		
Wheel traffic	light : MEDIUM : heavy		
Impacts	NA		
Abrasion	NA		
Easy maintenance	ESSENTIAL: desirable unnecessary		
Vibration free	ESSENTIAL: desirable unnecessary		
Door sets	bed, stretcher trolley, wheelchair	SPACE DEMANDS (Total Minimum Space Required in sq m) : 15.40	
	access	Space Components	Minimum Space Required/Component
Windows	clear, solar control, privacy con-	Ward Area	12.60 sq m
	trol	Toilet and Bath	2.80 sq m
Internal glazing	nil	REGULATIONS AND NOTES	

Hospital: Secondary, 25-Bed	DEPARTMENT DATA SHEET	Department of Health HEALTH INFRASTRUCTURE SERVICE
Updated Reference: June 1994	Department: NURSING UNIT (Nursing Wards)	Reference Sheet Number: 25B-NU-DDS2

LAYOUT PER DEPARTMENT SHOWING ROOMS AND SPACE COMPONENTS:

Scale 1:200 mts.



Hospital: Secondary, 25-Bed	ROOM DATA SHEET		Department of Health HEALTH INFRASTRUCTURE SERVICE
Updated Reference: June 1994	Department: NURSING UNIT	Room Title: OFFICE OF THE CHIEF NURSE	Reference Sheet Number: 25B-NU-RDS1.5C
TECHNICAL DESIGN DATA:		LAYOUT OF ROOM AND SPACE COMPONENTS:	
DIRECT SERVICES	DESIGN DATA	<p>Scale 1:100 mts.</p>	
Disposal	hospital waste category: A		
Hot water	NA		
Cold water	NA		
Drainage	NA		
Gas	NA		
Compressed air	NA		
Steam	NA		
Others			
DIRECT DEMANDS ON FLOOR AND WALL			
Loading	NA		
Spillage	NA		
Foot traffic	LIGHT : medium : heavy		
Wheel traffic	LIGHT : medium : heavy		
Impacts	NA		
Abrasion	NA		
Easy maintenance	ESSENTIAL: desirable: unnecessary	SPACE DEMANDS (Total Minimum Space Required in sq.m.) : 10.50	
Vibration free	ESSENTIAL: desirable: unnecessary	Space Components	Minimum Space Required/Component
Door sets	wheelchair access		
Windows	clear, solar control	REGULATIONS AND NOTES:	
Internal glazing	nil		

Hospital: Secondary, 25-Bed	ROOM DATA SHEET		Department of Health HEALTH INFRASTRUCTURE SERVICE						
Updated Reference: June 1994	Department: NURSING UNIT	Room Title: CLEAN LINEN ROOM AND SOILED LINEN ROOM	Reference Sheet Number: 25B-NU-RDS1.4C						
TECHNICAL DESIGN DATA:		LAYOUT OF ROOM AND SPACE COMPONENTS:							
DIRECT SERVICES	DESIGN DATA	<p>Scale 1:100 mts.</p>							
Disposal	NA								
Hot water	NA								
Cold water	NA								
Drainage	NA								
Gas	NA								
Compressed air	NA								
Steam	NA								
Others									
DIRECT DEMANDS ON FLOOR AND WALL				<p>Key</p> <p>1 Linen closet, 600mm deep 3 Clean Linen Room 2 Laundry hamper 4 Soiled Linen Room</p>					
Loading	light : MEDIUM : heavy								
Spillage	NA								
Foot traffic	light : MEDIUM : heavy								
Wheel traffic	NA								
Impacts	NA	<p>SPACE DEMANDS (Total Minimum Space Required in sq.m.) : 6.30</p> <table border="1"> <tr> <td>Space Components</td> <td>Minimum Space Required/Component</td> </tr> <tr> <td>Clean Linen Room</td> <td>3.30 sq.m.</td> </tr> <tr> <td>Soiled Linen Room</td> <td>3.00 sq.m.</td> </tr> </table>		Space Components	Minimum Space Required/Component	Clean Linen Room	3.30 sq.m.	Soiled Linen Room	3.00 sq.m.
Space Components	Minimum Space Required/Component								
Clean Linen Room	3.30 sq.m.								
Soiled Linen Room	3.00 sq.m.								
Abrasion	NA								
Easy maintenance	ESSENTIAL:desirable:unnecessary								
Vibration free	essential:DESIRABLE:unnecessary								
Door sets	ordinary access door								
Windows	clear, solar control	REGULATIONS AND NOTES:							
Internal glazing	nil								

Hospital: Secondary, 25-Bed	ROOM DATA SHEET		Department of Health HEALTH INFRASTRUCTURE SERVICE
Updated Reference: June 1994	Department: NURSING UNIT	Room Title: UTILITY ROOM	Reference Sheet Number: 25B-NU-RDS1.3C
TECHNICAL DESIGN DATA:		LAYOUT OF ROOM AND SPACE COMPONENTS:	
DIRECT SERVICES	DESIGN DATA	<p>Scale 1:100 mts.</p>	
Disposal	hospital waste category: A,B,E,F		
Hot water	required at sink		
Cold water	required at sink		
Drainage	required at sink		
Gas	NA		
Compressed air	NA		
Steam	NA		
Others			
DIRECT DEMANDS ON FLOOR AND WALL			
Loading	NA	SPACE DEMANDS (Total Minimum Space Required in sq.m.) : 3.60	
Spillage	slight : OCCASIONAL : frequent	Space Components	Minimum Space Required/Component
Foot traffic	light : MEDIUM : heavy		
Wheel traffic	NA		
Impacts	NA		
Abrasion	NA		
Easy maintenance	ESSENTIAL:desirable:unnecessary	REGULATIONS AND NOTES:	
Vibration free	ESSENTIAL:desirable:unnecessary		
Door sets	ordinary access door		
Windows	clear		
Internal glazing	nil		

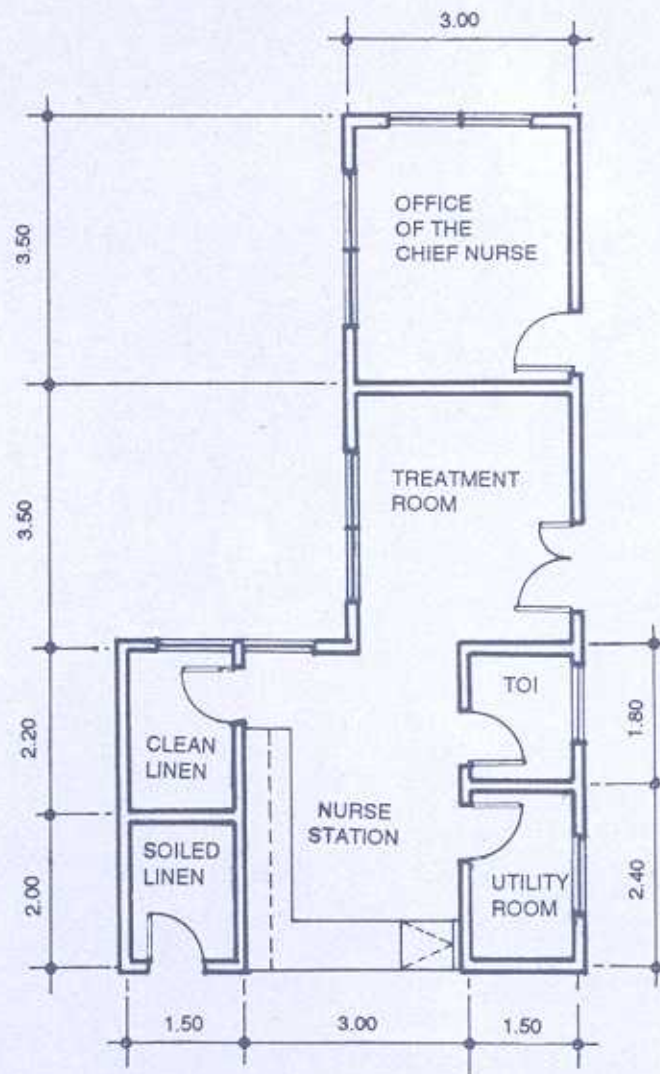
Hospital: Secondary, 25-Bed	ROOM DATA SHEET		Department of Health HEALTH INFRASTRUCTURE SERVICE																				
Updated Reference: June 1994	Department: NURSING UNIT	Room Title: TREATMENT ROOM	Reference Sheet Number: 25B-NU-RDS1.2C																				
TECHNICAL DESIGN DATA:		LAYOUT OF ROOM AND SPACE COMPONENTS:																					
DIRECT SERVICES	DESIGN DATA	<p>Scale 1:100 mts.</p>																					
Disposal	hospital waste category: A,B,E,F																						
Hot water	required at sink																						
Cold water	required at sink																						
Drainage	required at sink																						
Gas	oxygen outlet																						
Compressed air	suction outlet w/vacuum devices																						
Steam	NA																						
Others																							
DIRECT DEMANDS ON FLOOR AND WALL				<p>Key</p> <table border="0"> <tr> <td>1 Waste receptacle</td> <td>9 View box</td> </tr> <tr> <td>2 Combination scrub sink and instrument sink w/gooseneck spout & spray knee control</td> <td>10 Dressing cart</td> </tr> <tr> <td>3 Counter, 900mm high with cabinets below</td> <td>11 Examining light</td> </tr> <tr> <td>4 Wall cabinet</td> <td>12 Mayo table</td> </tr> <tr> <td>5 Bulletin board</td> <td>13 Instrument table, 600x900</td> </tr> <tr> <td>6 Nurses call station, emergency</td> <td>14 Adjustable stool</td> </tr> <tr> <td>7 Kick bucket</td> <td>15 Examining table</td> </tr> <tr> <td>8 Irrigator stand</td> <td>16 Footstool</td> </tr> <tr> <td></td> <td>17 Domelight and buzzer set, 1600mm from floor</td> </tr> <tr> <td></td> <td>18 Curtain and rod</td> </tr> </table>		1 Waste receptacle	9 View box	2 Combination scrub sink and instrument sink w/gooseneck spout & spray knee control	10 Dressing cart	3 Counter, 900mm high with cabinets below	11 Examining light	4 Wall cabinet	12 Mayo table	5 Bulletin board	13 Instrument table, 600x900	6 Nurses call station, emergency	14 Adjustable stool	7 Kick bucket	15 Examining table	8 Irrigator stand	16 Footstool		17 Domelight and buzzer set, 1600mm from floor
1 Waste receptacle	9 View box																						
2 Combination scrub sink and instrument sink w/gooseneck spout & spray knee control	10 Dressing cart																						
3 Counter, 900mm high with cabinets below	11 Examining light																						
4 Wall cabinet	12 Mayo table																						
5 Bulletin board	13 Instrument table, 600x900																						
6 Nurses call station, emergency	14 Adjustable stool																						
7 Kick bucket	15 Examining table																						
8 Irrigator stand	16 Footstool																						
	17 Domelight and buzzer set, 1600mm from floor																						
	18 Curtain and rod																						
Loading	NA	SPACE DEMANDS (Total Minimum Space Required in sq.m.) : 10.50																					
Spillage	SLIGHT : occasional : frequent	Space Components	Minimum Space Required/Component																				
Foot traffic	light : MEDIUM : heavy																						
Wheel traffic	light : MEDIUM : heavy																						
Impacts	NA	REGULATIONS AND NOTES:																					
Abrasion	NA																						
Easy maintenance	ESSENTIAL: desirable unnecessary																						
Vibration free	ESSENTIAL: desirable unnecessary																						
Door sets	examining table, stretcher and wheelchair access																						
Windows	clear, solar control, privacy control																						
	trol																						
Internal glazing	nil																						

Hospital: Secondary, 25-Bed	ROOM DATA SHEET		Department of Health HEALTH INFRASTRUCTURE SERVICE								
Updated Reference: June 1994	Department: NURSING UNIT	Room Title: NURSE STATION	Reference Sheet Number: 25B-NU-RDS1 1C								
TECHNICAL DESIGN DATA		LAYOUT OF ROOM AND SPACE COMPONENTS									
DIRECT SERVICES	DESIGN DATA	<p>Scale 1:100 mts.</p>									
Disposal	hospital waste category: A,B,E,F										
Hot water	required at sink										
Cold water	req'd. at sink and toilet fixtures										
Drainage	req'd. at sink & toi. fix. & flr.										
Gas	NA										
Compressed air	NA										
Steam	NA										
Others											
DIRECT DEMANDS ON FLOOR AND WALL				<p>Key</p> <table> <tr> <td>1 Medicine sink in counter with gooseneck spout</td> <td>4 Bulletin board, 600x600</td> </tr> <tr> <td>2 Locked wall cabinet with inner locker narcotic compartment and inside light</td> <td>5 Chart rack</td> </tr> <tr> <td>3 Counter, 900mm high, with cabinet below</td> <td>6 Counter, 900mm high, open below</td> </tr> <tr> <td></td> <td>7 Adjustable stool</td> </tr> </table>		1 Medicine sink in counter with gooseneck spout	4 Bulletin board, 600x600	2 Locked wall cabinet with inner locker narcotic compartment and inside light	5 Chart rack	3 Counter, 900mm high, with cabinet below	6 Counter, 900mm high, open below
1 Medicine sink in counter with gooseneck spout	4 Bulletin board, 600x600										
2 Locked wall cabinet with inner locker narcotic compartment and inside light	5 Chart rack										
3 Counter, 900mm high, with cabinet below	6 Counter, 900mm high, open below										
	7 Adjustable stool										
Loading	NA	SPACE DEMANDS (Total Minimum Space Required in sq.m.) : 15.30									
Spillage	SLIGHT : occasional : frequent	Space Components	Minimum Space Required/Component								
Foot traffic	light : MEDIUM : heavy	Work Area	12.60 sq.m.								
Wheel traffic	light : MEDIUM : heavy	Toilet	2.70 sq.m.								
Impacts	NA										
Abrasion	NA	REGULATIONS AND NOTES:									
Easy maintenance	ESSENTIAL : desirable : unnecessary										
Vibration free	essential : DESIRABLE : unnecessary										
Door sets	nil, open to circulation										
Windows	clear, solar control										
Internal glazing	nil										

Hospital: Secondary, 25-Bed	DEPARTMENT DATA SHEET	Department of Health HEALTH INFRASTRUCTURE SERVICE
Updated Reference: June 1994	Department: NURSING UNIT (Nurse Station and Service Group)	Reference Sheet Number: 25B-NU-DDS1

LAYOUT PER DEPARTMENT SHOWING ROOMS AND SPACE COMPONENTS:

Scale 1:100 mts.



Hospital Secondary, 25-Bed	ROOM DATA SHEET		Department of Health HEALTH INFRASTRUCTURE SERVICE
Updated Reference: June 1994	Department: NURSERY	Room Title: SUSPECT/PATHOLOGIC NURSERY	Reference Sheet Number: 25B-CL-RDS4.2B
TECHNICAL DESIGN DATA:			
ENVIRONMENTAL CONDITIONS	DESIGN DATA	ENVIRONMENTAL CONDITIONS	DESIGN DATA
AIR		LIGHTING AND VISUAL	
Outdoor air temperature (deg. C)	ave. local station temp. reading	General illumination (LUX)	250
Room Temperature (deg. C)	25	Night illumination (LUX)	150
Mechanical ventilation:		Task illumination (LUX)	500
Volume (cu.m./hr.-person)	12.75	Colour rendering	ESSENTIAL:desirable:unnecessary
Velocity (m./hr.)	900	Standby light	ESSENTIAL:desirable:unnecessary
Pressure:		Emergency light	ESSENTIAL:desirable:unnecessary
Exhaust (psi)	NA	Daylight	essential:DESIRABLE:unnecessary
Inlet (psi)	NA	View out	essential:DESIRABLE:unnecessary
% Dust filtration	93% - 99% @ 1 micron	Privacy	ESSENTIAL:desirable:unnecessary
Humidity (% RH)	50	Black out	essential:desirable:UNNECESSARY
Cooling load (TR)	2.5		
SOUND		SAFETY	
Acceptable sound level (db)	40	Accessible hot surface:	hot plate and sterilizer
Speech privacy	essential:DESIRABLE:unnecessary	Maximum temperature (deg. C)	100
Quality which cannot be	tonal impact	Domestic hot water:	at sink and lavatory
tolerated		Maximum temperature (deg. C)	70
		Access limit	medical staff & patients
		Fire risk	low :: MEDIUM :: high
		Other risks	NA

Hospital: Secondary, 25-Bed	ROOM DATA SHEET		Department of Health HEALTH INFRASTRUCTURE SERVICE
Updated Reference: June 1994	Department: NURSERY	Room Title: SEPTIC NURSERY	Reference Sheet Number: 25B-CL-RDS4.1B
TECHNICAL DESIGN DATA:			
ENVIRONMENTAL CONDITIONS	DESIGN DATA	ENVIRONMENTAL CONDITIONS	DESIGN DATA
AIR		LIGHTING AND VISUAL	
Outdoor air temperature (deg. C)	ave. local station temp. reading	General illumination (LUX)	250
Room Temperature (deg. C)	25	Night illumination (LUX)	150
Mechanical ventilation:		Task illumination (LUX)	500
Volume (cu.m./hr./person)	12.75	Colour rendering	ESSENTIAL:desirable:unnecessary
Velocity (m./hr.)	900	Standby light	ESSENTIAL:desirable:unnecessary
Pressure:		Emergency light	ESSENTIAL:desirable:unnecessary
Exhaust (psi)	NA	Daylight	essential:DESIRABLE:unnecessary
Inlet (psi)	NA	View out	essential:DESIRABLE:unnecessary
% Dust filtration	93% - 99% @ 1 micron	Privacy	ESSENTIAL:desirable:unnecessary
Humidity (% RH)	50	Black out	essential:desirable:UNNECESSARY
Cooling load (TR)	1.0		
SOUND		SAFETY	
Acceptable sound level (db)	40	Accessible hot surface:	single element hot plate
Speech privacy	essential:DESIRABLE:unnecessary	Maximum temperature (deg. C)	100
Quality which cannot be	tonal impact	Domestic hot water:	at sink and lavatory
tolerated		Maximum temperature (deg. C)	70
		Access limit	medical staff
		Fire risk	low : MEDIUM : high
		Other risks	exposure to infectious diseases

Hospital: Secondary, 25-Bed	ROOM DATA SHEET		Department of Health HEALTH INFRASTRUCTURE SERVICE
Updated Reference: June 1994	Department: NURSERY	Room Title: BREASTFEEDING ROOM	Reference Sheet Number: 25B-CL-RDS4.3C
TECHNICAL DESIGN DATA:		LAYOUT OF ROOM AND SPACE COMPONENTS:	
DIRECT SERVICES	DESIGN DATA	<p>Scale 1:100 mts.</p> <p>Key 1 Sofa, 800x2000 2 Coffee table</p>	
Disposal	hospital waste category: A		
Hot water	NA		
Cold water	NA		
Drainage	NA		
Gas	NA		
Compressed air	NA		
Steam	NA		
Others:			
DIRECT DEMANDS ON FLOOR AND WALL			
Loading	NA		
Spillage	NA		
Foot traffic	LIGHT : medium : heavy		
Wheel traffic	LIGHT : medium : heavy		
Impacts	NA		
Abrasion	NA		
Easy maintenance	ESSENTIAL:desirable:unnecessary		
Vibration free	ESSENTIAL:desirable:unnecessary		
Door sets	ordinary access door with vision	Space Components	Minimum Space Required/Component
	panel		
Windows	clear, solar control, privacy con-		
	trol	REGULATIONS AND NOTES:	
Internal glazing	nil		

Hospital: Secondary, 25-Bed	ROOM DATA SHEET		Department of Health HEALTH INFRASTRUCTURE SERVICE
Updated Reference: June 1994	Department: NURSERY	Room Title: BREASTFEEDING ROOM	Reference Sheet Number: 25B-CL-RDS4.3B
TECHNICAL DESIGN DATA:			
ENVIRONMENTAL CONDITIONS		DESIGN DATA	
ENVIRONMENTAL CONDITIONS		DESIGN DATA	
AIR		LIGHTING AND VISUAL	
Outdoor air temperature (deg. C)	ave. local station temp. reading	General illumination (LUX)	500
Room Temperature (deg. C)	25	Night illumination (LUX)	NA
Mechanical ventilation:		Task illumination (LUX)	NA
Volume (cu.m./hr.-person)	12.75	Colour rendering	ESSENTIAL desirable:unnecessary
Velocity (m./hr.)	750	Standby light	ESSENTIAL desirable unnecessary
Pressure:		Emergency light	essential DESIRABLE unnecessary
Exhaust (psi)	NA	Daylight	essential desirable:UNNECESSARY
Inlet (psi)	NA	View out	essential DESIRABLE unnecessary
% Dust filtration	93% - 99% @ 1 micron	Privacy	essential DESIRABLE unnecessary
Humidity (% RH)	50	Black out	essential-desirable UNNECESSARY
Cooling load (TR)	1.0		
SOUND		SAFETY	
Acceptable sound level (db)	50	Accessible hot surface	NA
Speech privacy	essential DESIRABLE unnecessary	Maximum temperature (deg. C)	NA
Quality which cannot be		Domestic hot water:	NA
tolerated		Maximum temperature (deg. C)	NA
		Access limit	hospital staff and patients
		Fire risk	low : MEDIUM : high
		Other risks	NA

Hospital: Secondary, 25-Bed	ROOM DATA SHEET		Department of Health HEALTH INFRASTRUCTURE SERVICE
Updated Reference: June 1994	Department: NURSERY	Room Title: SEPTIC NURSERY	Reference Sheet Number: 25B-CL-RDS4.1C
TECHNICAL DESIGN DATA:		LAYOUT OF ROOM AND SPACE COMPONENTS:	
DIRECT SERVICES	DESIGN DATA	<p>Scale 1:100 mts.</p>	
Disposal	hospital waste category: A,B,E,F		
Hot water	required at sink and lavatory		
Cold water	required at sink and lavatory		
Drainage	required at sink and lavatory		
Gas	NA		
Compressed air	NA		
Steam	NA		
Others			
DIRECT DEMANDS ON FLOOR AND WALL		Key	
Loading	NA	<p>1 Bassinet</p> <p>2 Bedside cabinet</p> <p>3 Infant scale</p> <p>4 Lavatory with gooseneck spout and knee control</p> <p>5 Sanitary waste receptacle</p> <p>6 Waste paper receptacle</p> <p>7 Linen hamper</p> <p>8 Sink in counter w/gooseneck spout and knee control</p> <p>9 Counter, 900mm high, with cabinets below</p> <p>10 Single element hot plate</p> <p>11 Wall cabinet</p> <p>12 Counter, 900mm high, open below</p> <p>13 Stool</p> <p>14 Cubicle partition, 1700mm high clear glass in upper panels</p> <p>15 Instrument sterilizer</p> <p>16 Portable incubator</p> <p>17 Work Room</p>	
Spillage	SLIGHT : occasional : frequent	SPACE DEMANDS (Total Minimum Space Required in sq.m.) : 18.00	
Foot traffic	light : MEDIUM : heavy	Space Components	Minimum Space Required/Component
Wheel traffic	light : MEDIUM : heavy	Septic Nursery	12.00 sq.m.
Impacts	NA	Work Room	6.00 sq.m.
Abrasion	NA	REGULATIONS AND NOTES:	
Easy maintenance	ESSENTIAL:desirable:unnecessary	Minimum area : 3.70 sq.m. per bassinet (septic)	
Vibration free	ESSENTIAL:desirable:unnecessary		
Door sets	ordinary access door		
Windows	clear, solar control, privacy control		
Internal glazing	clear, privacy control		

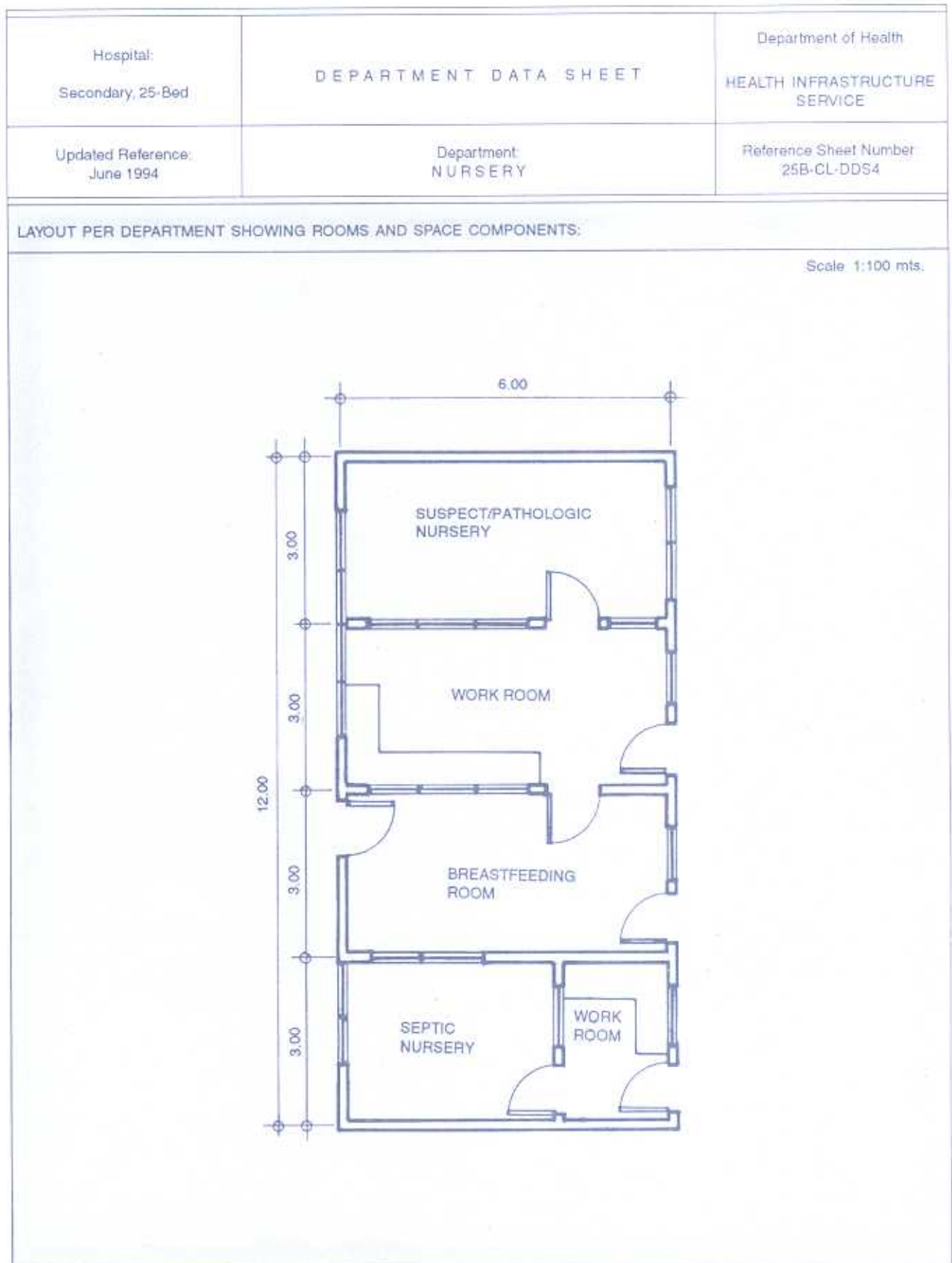
Hospital: Secondary, 25-Bed		ROOM DATA SHEET		Department of Health HEALTH INFRASTRUCTURE SERVICE	
Updated Reference: June 1994		Department: NURSERY		Room Title: SUSPECT/PATHOLOGIC NURSERY Reference Sheet Number: 25B-CL-RDS4.2C	
TECHNICAL DESIGN DATA:				LAYOUT OF ROOM AND SPACE COMPONENTS:	
DIRECT SERVICES		DESIGN DATA		<div>Scale 1:100 mts.</div> <div>Key</div> <div><div>1 Bassinet</div><div>2 Bedside cabinet</div><div>3 Cubicle partition, 1700mm high clear glass in upper panels</div><div>4 Lavatory with gooseneck spout and knee control</div><div>5 Waste paper receptacle</div><div>6 Sanitary waste receptacle</div><div>7 Linen hamper</div><div>8 Pass window</div><div>9 Incubator</div><div>10 Infant scale</div><div>11 Counter, 900mm high, with cabinets below</div><div>12 Single element hot plate</div><div>13 Instrument sterilizer</div><div>14 Sink in counter with gooseneck spout and knee control</div><div>15 Refrigerator, 6 cu. ft.</div><div>16 Wall Cabinet</div><div>17 Chair, upright, stacking</div><div>18 Desk, 750x1200</div><div>19 Swivel, 750x1200</div><div>20 Portable incubator</div><div>21 Glass view panels</div><div>22 Work Room</div></div>	
Disposal		hospital waste category: A,B,E,F			
Hot water		required at sink and lavatory			
Cold water		required at sink and lavatory			
Drainage		required at sink and lavatory			
Gas		NA			
Compressed air		NA			
Steam		NA			
Others					
DIRECT DEMANDS ON FLOOR AND WALL					
Loading		NA			
Spillage		SLIGHT : occasional : frequent			
Foot traffic		light : MEDIUM : heavy			
Wheel traffic		light : MEDIUM : heavy			
Impacts		NA			
Abrasion		NA			
Easy maintenance		ESSENTIAL:desirable:unnecessary			
Vibration free		ESSENTIAL:desirable:unnecessary			
Door sets		ordinary access door		SPACE DEMANDS (Total Minimum Space Required in sq.m.) : 36.00	
				Space Components	
Windows		clear, solar control, privacy control		Suspect/Pathologic Nursery	
		trol		Work Room	
Internal glazing		clear, privacy control		REGULATIONS AND NOTES: Minimum area: 2.78 sq.m. per bassinet (full term)	

Hospital Secondary, 25-Bed	ROOM DATA SHEET		Department of Health HEALTH INFRASTRUCTURE SERVICE
Updated Reference: June 1994	Department: NURSERY	Room Title: BREASTFEEDING ROOM	Reference Sheet Number: 25B-CL-RDS4.3A
FUNCTIONAL DESIGN REQUIREMENTS:			
<p>This activity space provides facilities needed for the following activities:</p> <ul style="list-style-type: none"> a. Nurse brings in new born infant to waiting mother for breastfeeding b. Nurse assists mothers in breastfeeding their babies. <p>People Involved:</p> <ul style="list-style-type: none"> 1 x Nurse New born infants Mothers <p>Planning Relationships:</p> <ul style="list-style-type: none"> a. Adjacent to Suspect/Pathologic Nursery and Septic Nursery. 	EQUIPMENT AND ACCESSORY CHECKLIST	QUANTITY	REMARKS
	FURNITURE AND FIXTURE CHECKLIST	QUANTITY	REMARKS
	Sofa, 800x2000 Coffee table	3 1	
	ADDITIONAL EQUIPMENT AND ENGINEERING TERMINALS	QUANTITY	REMARKS
Rail, curtain, window Outlet, 10A, 2P, 240V, duplex Outlet, 15A, 2P, 240V, single Smoke detector	1 3 1 1	grounding type, parallel slots grounding type, tandem slots	

Hospital: Secondary, 25-Bed	ROOM DATA SHEET		Department of Health HEALTH INFRASTRUCTURE SERVICE
Updated Reference: June 1994	Department: NURSERY	Room Title: SUSPECT/PATHOLOGIC NURSERY	Reference Sheet Number: 25B-CL-RDS4.2A

FUNCTIONAL DESIGN REQUIREMENTS:																														
<p>This activity space provides facilities needed for the following activities:</p> <ul style="list-style-type: none"> a. A new born premature baby is brought in from the Delivery Room. b. Nurse administers nursing care clinical procedures to baby. c. Nurse measures baby's height and head circumference. d. Nurse weighs baby. e. Nurse records data gathered. f. Nurse prepares baby, i.e., cleans and dresses baby. g. Nurse places baby in the bassinet. <p>People Involved:</p> <ul style="list-style-type: none"> 3 x New born infants 1 x Nurse 1 x Nursing Attendant <p>Planning Relationships:</p> <ul style="list-style-type: none"> a. Close to Delivery Room. b. Close to Labor Room. c. Close to Operating Room. <p>This activity space provides facilities needed for the delivery of Critical Patient Care.</p>	<p>EQUIPMENT AND ACCESSORY CHECKLIST</p> <table border="1"> <tr><td>Refrigerator, 6 cu. ft.</td><td>1</td><td></td></tr> <tr><td>Instrument sterilizer</td><td>1</td><td></td></tr> <tr><td>Single element hot plate</td><td>1</td><td></td></tr> <tr><td>Linen hamper</td><td>1</td><td></td></tr> <tr><td>Waste paper receptacle</td><td>1</td><td></td></tr> <tr><td>Sanitary waste receptacle</td><td>1</td><td></td></tr> <tr><td>Incubator</td><td>1</td><td></td></tr> <tr><td>Infant scale</td><td>1</td><td></td></tr> <tr><td>Portable incubator</td><td>1</td><td></td></tr> </table>	Refrigerator, 6 cu. ft.	1		Instrument sterilizer	1		Single element hot plate	1		Linen hamper	1		Waste paper receptacle	1		Sanitary waste receptacle	1		Incubator	1		Infant scale	1		Portable incubator	1		QUANTITY	REMARKS
	Refrigerator, 6 cu. ft.	1																												
	Instrument sterilizer	1																												
	Single element hot plate	1																												
	Linen hamper	1																												
Waste paper receptacle	1																													
Sanitary waste receptacle	1																													
Incubator	1																													
Infant scale	1																													
Portable incubator	1																													
<p>FURNITURE AND FIXTURE CHECKLIST</p> <table border="1"> <tr><td>Lavatory with gooseneck spout and knee control</td><td>1</td><td></td></tr> <tr><td>Bassinet</td><td>2</td><td></td></tr> <tr><td>Sink in counter with gooseneck spout and knee control</td><td>1</td><td></td></tr> <tr><td>Desk, 750x1200</td><td>1</td><td></td></tr> <tr><td>Chair, upright, stacking</td><td>1</td><td></td></tr> <tr><td>Bedside cabinet</td><td>3</td><td></td></tr> <tr><td>Counter, 900mm high, with cabinets below</td><td></td><td></td></tr> <tr><td>Wall cabinet</td><td></td><td></td></tr> <tr><td>Swivel chair</td><td>1</td><td></td></tr> </table>	Lavatory with gooseneck spout and knee control	1		Bassinet	2		Sink in counter with gooseneck spout and knee control	1		Desk, 750x1200	1		Chair, upright, stacking	1		Bedside cabinet	3		Counter, 900mm high, with cabinets below			Wall cabinet			Swivel chair	1		QUANTITY	REMARKS	
Lavatory with gooseneck spout and knee control	1																													
Bassinet	2																													
Sink in counter with gooseneck spout and knee control	1																													
Desk, 750x1200	1																													
Chair, upright, stacking	1																													
Bedside cabinet	3																													
Counter, 900mm high, with cabinets below																														
Wall cabinet																														
Swivel chair	1																													
<p>ADDITIONAL EQUIPMENT AND ENGINEERING TERMINALS</p> <table border="1"> <tr><td>Rail, curtain, window</td><td>5</td><td></td></tr> <tr><td>Outlet, intercom</td><td>2</td><td></td></tr> <tr><td>Outlet, 10A, 2P, 240V, duplex</td><td>12</td><td></td></tr> <tr><td>Outlet, 15A, 2P, 240V, single</td><td>4</td><td></td></tr> <tr><td>Smoke detector</td><td>2</td><td></td></tr> </table>	Rail, curtain, window	5		Outlet, intercom	2		Outlet, 10A, 2P, 240V, duplex	12		Outlet, 15A, 2P, 240V, single	4		Smoke detector	2		QUANTITY	REMARKS													
Rail, curtain, window	5																													
Outlet, intercom	2																													
Outlet, 10A, 2P, 240V, duplex	12																													
Outlet, 15A, 2P, 240V, single	4																													
Smoke detector	2																													
			grounding type, parallel slots																											
			grounding type, tandem slots																											

Hospital: Secondary, 25-Bed	ROOM DATA SHEET		Department of Health HEALTH INFRASTRUCTURE SERVICE
Updated Reference: June 1994	Department: NURSERY	Room Title: SEPTIC NURSERY	Reference Sheet Number: 25B-CL-RDS4 1A
FUNCTIONAL DESIGN REQUIREMENTS:			
<p>This activity space provides facilities needed for the following activities:</p> <ul style="list-style-type: none"> a. A new born baby is brought in from the Delivery Room. b. A new born baby born elsewhere is brought in for admission. c. Nurse administers nursing care clinical procedures to baby. d. Nurse examines baby and records data gathered. e. Nurse weighs baby. f. Nurse prepares baby, i.e., cleans and dresses baby. g. Nurse places baby in the bassinet. <p>People Involved:</p> <ul style="list-style-type: none"> 2 x New born infants 1 x Resident Physician 1 x Nurse 1 x Nursing Attendant <p>Planning Relationships:</p> <ul style="list-style-type: none"> a. Close to Delivery Room. b. Close to Operating Room. c. Adjacent to Suspect/Pathologic Nursery. d. Adjacent to Breastfeeding Room. <p>This activity space provides facilities needed for the delivery of Critical Patient Care</p>	<p>EQUIPMENT AND ACCESSORY CHECKLIST</p> <ul style="list-style-type: none"> Waste paper receptacle 1 Sanitary waste receptacle 1 Linen hamper 1 Single element hot plate 1 Instrument sterilizer 1 Infant scale 1 Portable incubator 1 	QUANTITY	REMARKS
	<p>FURNITURE AND FIXTURE CHECKLIST</p> <ul style="list-style-type: none"> Bassinet 2 Lavatory with gooseneck spout and knee control 1 Sink in counter with gooseneck spout and knee control 1 Bedside cabinet 2 Counter, 900mm high, with cabinets below Wall cabinet Counter, 900mm high, open below Stool 1 	QUANTITY	REMARKS
	<p>ADDITIONAL EQUIPMENT AND ENGINEERING TERMINALS</p> <ul style="list-style-type: none"> Rail, curtain, window 1 Outlet, intercom 1 Outlet, 10A, 2P, 240V, duplex 9 Outlet, 15A, 2P, 240V, single 2 Smoke detector 1 	QUANTITY	REMARKS



Hospital: Secondary, 25-Bed	ROOM DATA SHEET		Department of Health HEALTH INFRASTRUCTURE SERVICE	
Updated Reference: June 1994	Department: NURSING UNIT	Room Title: CLEAN LINEN ROOM AND SOILED LINEN ROOM	Reference Sheet Number: 25B-NU-RDS1.4A	
FUNCTIONAL DESIGN REQUIREMENTS:				
<p>This activity space provides facilities needed for the following activities:</p> <ul style="list-style-type: none"> a. Storage of Clean Linen. b. Issuance of Clean Linen. c. Transit storage of Soiled Linen. <p>People Involved:</p> <p>1 x Nursing Attendant</p> <p>Planning Relationships:</p> <ul style="list-style-type: none"> a. Adjacent to Nurse Station. b. Soiled Linen Room should be accessible from the corridor. c. Clean Linen Room should be accessible from the Nurse Station. 		<p>EQUIPMENT AND ACCESSORY CHECKLIST</p> <p>Laundry hamper</p>	<p>QUANTITY</p> <p>1</p>	<p>REMARKS</p>
		<p>FURNITURE AND FIXTURE CHECKLIST</p> <p>Linen closet, 600mm deep</p>	<p>QUANTITY</p>	<p>REMARKS</p>
		<p>ADDITIONAL EQUIPMENT AND ENGINEERING TERMINALS</p> <p>Rail, curtain, window Outlet, 10A, 2P, 240V, duplex</p>	<p>QUANTITY</p> <p>1 2</p>	<p>REMARKS</p> <p>grounding type, parallel slots</p>

Hospital: Secondary, 25-Bed	R O O M D A T A S H E E T		Department of Health HEALTH INFRASTRUCTURE SERVICE
Updated Reference: June 1994	Department: NURSING UNIT	Room Title: OFFICE OF THE CHIEF NURSE	Reference Sheet Number: 25B-NU-RDS1.5A

FUNCTIONAL DESIGN REQUIREMENTS:			
<p>This activity space provides facilities needed for the following activities:</p> <ul style="list-style-type: none"> a. Chief Nurse reads, writes, and uses telephone in his work station. b. Chief Nurse receives visitors. c. Chief Nurse stores, files, and retrieves records. d. Chief Nurse prepares pertinent reports and plans program of activities. <p>People Involved:</p> <p>1 x Chief Nurse Visitors</p> <p>Planning Relationships:</p> <ul style="list-style-type: none"> a. Close to Nursing Unit. b. Close to Administrative Service. 	EQUIPMENT AND ACCESSORY CHECKLIST	QUANTITY	REMARKS
	Typewriter	1	
	FURNITURE AND FIXTURE CHECKLIST	QUANTITY	REMARKS
	Desk, 750x1500 Typewriter table, 400x800 Chair, upright, stacking Swivel chair Steel filing cabinet, 500x700	1 1 6 1 1	
	ADDITIONAL EQUIPMENT AND ENGINEERING TERMINALS	QUANTITY	REMARKS
Rail, curtain, window Outlet, telephone Outlet, 10A, 2P, 240V, duplex Outlet, 15A, 2P, 240V, single Outlet, intercom	2 1 2 1 1	grounding type, parallel slots grounding type, tandem slots	

Hospital: Secondary, 25-Bed	ROOM DATA SHEET		Department of Health HEALTH INFRASTRUCTURE SERVICE	
Updated Reference: June 1994	Department: NURSING UNIT	Room Title: TREATMENT ROOM	Reference Sheet Number: 25B-NU-RDS1.2A	
FUNCTIONAL DESIGN REQUIREMENTS:				
<p>This activity space provides facilities needed for the following activities:</p> <ul style="list-style-type: none"> a. Patient arrives on foot, in wheel chair or on a stretcher trolley from ward. b. Patient is transferred from wheel chair or stretcher trolley to examining table and vice versa. c. Physician or nurse administers necessary medical, surgical and first-aid treatment to patient. <p>People Involved:</p> <ul style="list-style-type: none"> 1 x Physician 1 x Nurse 1 x Nursing Attendant 1 x Patient <p>Planning Relationships:</p> <ul style="list-style-type: none"> a. Adjacent to Nurse Station. b. Close to Nursing Wards. 	<p>EQUIPMENT AND ACCESSORY CHECKLIST</p> <p>Examining light Kick bucket Waste acceptable Domelight and buzzer set</p>	<p>QUANTITY</p> <p>1 1 1 1</p>	<p>REMARKS</p>	
	<p>FURNITURE AND FIXTURE CHECKLIST</p> <p>Instrument table (600x900) Mayo table Footstool Irrigator stand Counter, 900mm high with cabinets below Bulletin board Instrument and scrub sink with gooseneck spout and spray and knee control Examining table</p>	<p>QUANTITY</p> <p>1 1 1 1 1 1 1 1</p>	<p>REMARKS</p>	
	<p>ADDITIONAL EQUIPMENT AND ENGINEERING TERMINALS</p> <p>Rail, curtain, cubicle Rail, curtain, window Outlet, intercom Outlet, 10A, 2P, 240V, duplex Outlet, 15A, 2P, 240V Nurse call station, emergency</p>	<p>QUANTITY</p> <p>1 1 1 3 1 1</p>	<p>REMARKS</p> <p>grounding type, parallel slots grounding type, tandem slots</p>	

Hospital: Secondary, 25-Bed	ROOM DATA SHEET		Department of Health HEALTH INFRASTRUCTURE SERVICE
Updated Reference: June 1994	Department: NURSING UNIT	Room Title: NURSE STATION	Reference Sheet Number: 25B-NU-RDS1.1A

FUNCTIONAL DESIGN REQUIREMENTS:

<p>This activity space provides facilities needed for the following activities:</p> <ul style="list-style-type: none"> a. Nurse makes plan of her activities and determines her priority activities. b. Nurse makes proper inventory of resources, i.e. supplies, drugs, etc. to determine requisitions to be made. c. Nurse prepares for admission of a patient. d. Nurse enters name of patient in the admission book, ward directory and diet book. e. Nurse records and reports patient care activities and observations made. f. Nurse makes phone calls to coordinate with other units of the hospital. g. Nurse entertains queries from visitors of patients. <p>People Involved:</p> <ul style="list-style-type: none"> 1 x Chief Nurse 1 x Staff Nurse 1 x Nursing Attendant <p>Planning Relationships:</p> <ul style="list-style-type: none"> a. Close to Nursing Wards. b. Adjacent to Utility Rooms, Treatment Room, Clean Linen Room and Soiled Linen Room. 	EQUIPMENT AND ACCESSORY CHECKLIST	QUANTITY	REMARKS
	FURNITURE AND FIXTURE CHECKLIST	QUANTITY	REMARKS
	Locked wall cabinet with inner locker narcotic compartment and inside light Counter, 900mm high, with cabinet below Bulletin board, 600x600 Chart rack Counter, 900mm high, open below Adjustable stool Lavatory Water closet Medicine sink in counter with gooseneck spout	1 1 1 1 2 1 1 1	
	ADDITIONAL EQUIPMENT AND ENGINEERING TERMINALS	QUANTITY	REMARKS
Outlet, telephone Outlet, 10A, 2P, 240V Outlet, 15A, 2P, 240V Nurse call system Outlet, intercom Smoke detector Manual fire alarm station	1 4 1 1 1 1 1	grounding type, parallel slots grounding type, tandem slots optional	

Hospital: Secondary, 25-Bed	R O O M D A T A S H E E T		Department of Health HEALTH INFRASTRUCTURE SERVICE
Updated Reference: June 1994	Department: MEDICAL RECORDS	Room Title: MEDICAL RECORDS ROOM	Reference Sheet Number: 25B-AN-RDS.1A

FUNCTIONAL DESIGN REQUIREMENTS:			
<p>This activity space provides facilities needed for the following activities:</p> <ul style="list-style-type: none"> a. Medical Records Officer reads, transcribes, and updates the disease and operation coding and indexing. b. Medical Records Officer prepares communications and other pertinent papers related to medical records as requested by patients. c. Researchers and other authorized users conducting Medical studies read, write, and retrieve records. d. Medical Records Officer protects confidentiality of medical records. e. Medical Records Officer performs statistical and other reports required by the DOH and other institutions. f. Medical Records Officer performs qualitative and quantitative analysis of hospital medical records. g. Medical Records Officer assists researchers by giving data on specific research topic. <p>People Involved:</p> <ul style="list-style-type: none"> 1 x Medical Records Officer 1 x Clerk Researchers Visitors <p>Planning Relationships:</p> <ul style="list-style-type: none"> a. Close to Administrative Area. b. Close to Outpatient Department c. Close to other Ancillary Service. 	EQUIPMENT AND ACCESSORY CHECKLIST	QUANTITY	REMARKS
	Typewriter Calculating machine	1 1	
	FURNITURE AND FIXTURE CHECKLIST	QUANTITY	REMARKS
	Desk, 750x1200 Typewriter table, 400x600 Chair, upright, stacking Steel filing cabinet, 500x700 Transaction counter Writing counter Swivel chair Adjustable stool Open shelving, 400mm deep	1 1 2 1 1 1 1 1 6	
	ADDITIONAL EQUIPMENT AND ENGINEERING TERMINALS	QUANTITY	REMARKS
Rail, curtain, window Outlet, telephone Outlet, 10A, 2P, 240V, duplex Outlet, 15A, 2P, 240V, single Outlet, intercom Smoke detector	1 1 5 2 1 1	grounding type, parallel slots grounding type, tandem slots	

Hospital: Secondary, 25-Bed	ROOM DATA SHEET		Department of Health HEALTH INFRASTRUCTURE SERVICE
Updated Reference: June 1994	Department: NURSING UNIT	Room Title: NURSE STATION	Reference Sheet Number: 25B-NU-RDS1.1B
TECHNICAL DESIGN DATA:			
ENVIRONMENTAL CONDITIONS	DESIGN DATA	ENVIRONMENTAL CONDITIONS	DESIGN DATA
AIR		LIGHTING AND VISUAL	
Outdoor air temperature (deg. C)	ave. local station temp. reading	General illumination (LUX)	750
Room Temperature (deg. C)	25	Night illumination (LUX)	NA
Mechanical ventilation:		Task illumination (LUX)	NA
Volume (cu.m./hr.-person)	12.75	Colour rendering	essential;DESIRABLE;unnecessary
Velocity (m./hr.)	900	Standby light	ESSENTIAL;desirable;unnecessary
Pressure:		Emergency light	ESSENTIAL;desirable;unnecessary
Exhaust (psi)	NA	Daylight	essential;desirable;UNNECESSARY
Inlet (psi)	NA	View out	essential;DESIRABLE;unnecessary
% Dust filtration	93% - 99% @ 1 micron	Privacy	essential;desirable;UNNECESSARY
Humidity (% RH)	50	Black out	essential;desirable;UNNECESSARY
Cooling load (TR)	1.0		
SOUND		SAFETY	
Acceptable sound level (db)	50	Accessible hot surface:	NA
Speech privacy	essential;desirable;UNNECESSARY	Maximum temperature (deg. C)	NA
Quality which cannot be	tonal impact	Domestic hot water:	at medicine sink
tolerated		Maximum temperature (deg. C)	70
		Access limit	medical staff
		Fire risk	LOW : medium : HIGH
		Other risks	NA

Hospital: Secondary, 25-Bed	ROOM DATA SHEET		Department of Health HEALTH INFRASTRUCTURE SERVICE
Updated Reference: June 1994	Department: NURSING UNIT	Room Title: TREATMENT ROOM	Reference Sheet Number: 25B-NU-RDS1.2B
TECHNICAL DESIGN DATA:			
ENVIRONMENTAL CONDITIONS		DESIGN DATA	ENVIRONMENTAL CONDITIONS
DESIGN DATA		ENVIRONMENTAL CONDITIONS	
AIR		LIGHTING AND VISUAL	
Outdoor air temperature (deg. C)	ave. local station temp. reading	General illumination (LUX)	250-500
Room Temperature (deg. C)	25	Night illumination (LUX)	NA
Mechanical ventilation:		Task illumination (LUX)	1,000
Volume (cu.m./hr.-person)	12.75	Colour rendering	ESSENTIAL;desirable;unnecessary
Velocity (m./hr.)	900	Standby light	ESSENTIAL;desirable;unnecessary
Pressure:		Emergency light	ESSENTIAL;desirable;unnecessary
Exhaust (psi)	NA	Daylight	essential;DESIRABLE;unnecessary
Inlet (psi)	NA	View out	essential;DESIRABLE;unnecessary
% Dust filtration	NA	Privacy	essential;DESIRABLE;unnecessary
Humidity (% RH)	NA	Black out	essential;desirable;UNNECESSARY
Cooling load (TR)	NA		
SOUND		SAFETY	
Acceptable sound level (db)	50	Accessible hot surface:	NA
Speech privacy	essential;DESIRABLE;unnecessary	Maximum temperature (deg. C)	NA
Quality which cannot be	tonal impact	Domestic hot water:	at sink
tolerated		Maximum temperature (deg. C)	70
		Access limit	medical staff and patient
		Fire risk	LOW : medium : high
		Other risks	NA

Hospital: Secondary, 25-Bed	ROOM DATA SHEET		Department of Health HEALTH INFRASTRUCTURE SERVICE
Updated Reference: June 1994	Department: NURSING UNIT	Room Title: CLEAN LINEN ROOM AND SOILED LINEN ROOM	Reference Sheet Number: 25B-NU-RDS1 4B
TECHNICAL DESIGN DATA			
ENVIRONMENTAL CONDITIONS	DESIGN DATA	ENVIRONMENTAL CONDITIONS	DESIGN DATA
AIR		LIGHTING AND VISUAL	
Outdoor air temperature (deg. C)	ave. local station temp. reading	General illumination (LUX)	250
Room Temperature (deg. C)	atmospheric	Night illumination (LUX)	NA
Mechanical ventilation:		Task illumination (LUX)	NA
Volume (cu. m./hr.-person)	NA	Colour rendering	essential:DESIRABLE unnecessary
Velocity (m./hr.)	NA	Standby light	essential:DESIRABLE unnecessary
Pressure:		Emergency light	essential:desirable:UNNECESSARY
Exhaust (psi)	NA	Daylight	essential:desirable:UNNECESSARY
Inlet (psi)	NA	View out	essential:DESIRABLE unnecessary
% Dust filtration	NA	Privacy	essential:desirable:UNNECESSARY
Humidity (% RH)	NA	Black out	essential:desirable:UNNECESSARY
Cooling load (TR)	NA		
SOUND		SAFETY	
Acceptable sound level (db)	60	Accessible hot surface:	NA
Speech privacy	essential:desirable:UNNECESSARY	Maximum temperature (deg. C)	NA
Quality which cannot be	NA	Domestic hot water:	NA
tolerated		Maximum temperature (deg. C)	NA
		Access limit	nursing staff
		Fire risk	LOW : medium : high
		Other risks	NA

Hospital: Secondary, 25-Bed	ROOM DATA SHEET		Department of Health HEALTH INFRASTRUCTURE SERVICE
Updated Reference: June 1994	Department: NURSING UNIT	Room Title: OFFICE OF THE CHIEF NURSE	Reference Sheet Number: 25B-NU-RDS1.5B
TECHNICAL DESIGN DATA:			
ENVIRONMENTAL CONDITIONS	DESIGN DATA	ENVIRONMENTAL CONDITIONS	DESIGN DATA
AIR		LIGHTING AND VISUAL	
Outdoor air temperature (deg. C)	ave. local station temp. reading	General illumination (LUX)	500
Room Temperature (deg. C)	25	Night illumination (LUX)	NA
Mechanical ventilation:		Task illumination (LUX)	NA
Volume (cu.m./hr./person)	12.75	Colour rendering	essential:DESIRABLE:unnecessary
Velocity (m./hr.)	900	Standby light	essential:DESIRABLE:unnecessary
Pressure:		Emergency light	essential:DESIRABLE:unnecessary
Exhaust (psi)	NA	Daylight	essential:desirable:UNNECESSARY
Inlet (psi)	NA	View out	essential:DESIRABLE:unnecessary
% Dust filtration	93% - 99% @ 1 micron	Privacy	essential:DESIRABLE:unnecessary
Humidity (% RH)	50	Black out	essential:desirable:UNNECESSARY
Cooling load (TR)	0.75		
SOUND		SAFETY	
Acceptable sound level (db)	40	Accessible hot surface:	NA
Speech privacy	ESSENTIAL:desirable:unnecessary	Maximum temperature (deg. C)	NA
Quality which cannot be	tonal impact	Domestic hot water:	NA
tolerated		Maximum temperature (deg. C)	NA
		Access limit	Chief Nurse and staff
		Fire risk	LOW : medium : high
		Other risks	NA

Hospital: Secondary, 25-Bed	ROOM DATA SHEET		Department of Health HEALTH INFRASTRUCTURE SERVICE
Updated Reference: June 1994	Department: NURSING UNIT	Room Title: TREATMENT ROOM	Reference Sheet Number: 25B-NU-RDS1.2A
FUNCTIONAL DESIGN REQUIREMENTS:			
<p>This activity space provides facilities needed for the following activities:</p> <ul style="list-style-type: none"> a. Patient arrives on foot, in wheel chair or on a stretcher trolley from ward. b. Patient is transferred from wheel chair or stretcher trolley to examining table and vice versa. c. Physician or nurse administers necessary medical, surgical and first-aid treatment to patient. <p>People Involved:</p> <ul style="list-style-type: none"> 1 x Physician 1 x Nurse 1 x Nursing Attendant 1 x Patient <p>Planning Relationships:</p> <ul style="list-style-type: none"> a. Adjacent to Nurse Station. b. Close to Nursing Wards. 	EQUIPMENT AND ACCESSORY CHECKLIST	QUANTITY	REMARKS
	Examining light	1	
	Kick bucket	1	
	Waste acceptable	1	
	Domelight and buzzer set	1	
	FURNITURE AND FIXTURE CHECKLIST	QUANTITY	REMARKS
	Instrument table (600x900)	1	
Mayo table	1		
Footstool	1		
Irrigator stand	1		
Counter, 900mm high with cabinets below			
Bulletin board			
Instrument and scrub sink with gooseneck spout and spray and knee control	1		
Examining table	1		
ADDITIONAL EQUIPMENT AND ENGINEERING TERMINALS	QUANTITY	REMARKS	
Rail, curtain, cubicle	1	grounding type, parallel slots grounding type, tandem slots	
Rail, curtain, window	1		
Outlet, intercom	1		
Outlet, 10A, 2P, 240V, duplex	3		
Outlet, 15A, 2P, 240V	1		
Nurse call station, emergency	1		

Hospital: Secondary, 25-Bed	ROOM DATA SHEET		Department of Health HEALTH INFRASTRUCTURE SERVICE
Updated Reference: June 1994	Department: NURSING UNIT	Room Title: TYPICAL 2-BED WARD	Reference Sheet Number: 25B-NU-RDS2 1B
TECHNICAL DESIGN DATA:			
ENVIRONMENTAL CONDITIONS	DESIGN DATA	ENVIRONMENTAL CONDITIONS	DESIGN DATA
AIR		LIGHTING AND VISUAL	
Outdoor air temperature (deg. C)	ave. local station temp. reading	General illumination (LUX)	250
Room Temperature (deg. C)	25	Night illumination (LUX)	50
Mechanical ventilation:		Task illumination (LUX)	500
Volume (cu m./hr. -person)	12.75	Colour rendering	essential: DESIRABLE unnecessary
Velocity (m./hr.)	900	Standby light	ESSENTIAL desirable unnecessary
Pressure:		Emergency light	essential: DESIRABLE unnecessary
Exhaust (psi)	NA	Daylight	essential: DESIRABLE unnecessary
Inlet (psi)	NA	View out	essential: DESIRABLE unnecessary
% Dust filtration	93% - 99% @ 1 micron	Privacy	essential: DESIRABLE unnecessary
Humidity (% RH)	50	Black out	essential desirable: UNNECESSARY
Cooling load (TR)	1.0		
SOUND		SAFETY	
Acceptable sound level (db)	50	Accessible hot surface:	NA
Speech privacy	essential: DESIRABLE unnecessary	Maximum temperature (deg. C)	NA
Quality which cannot be	tonal impact	Domestic hot water:	at lavatory
tolerated		Maximum temperature (deg. C)	70
		Access limit	medical staff and patients
		Fire risk	LOW : medium : high
		Other risks	NA

Hospital: Secondary, 25-Bed	ROOM DATA SHEET		Department of Health HEALTH INFRASTRUCTURE SERVICE
Updated Reference: June 1994	Department: NURSING UNIT	Room Title: TYPICAL 4-BED WARD	Reference Sheet Number: 25B-NU-RDS2 2B
TECHNICAL DESIGN DATA:			
ENVIRONMENTAL CONDITIONS	DESIGN DATA	ENVIRONMENTAL CONDITIONS	DESIGN DATA
AIR		LIGHTING AND VISUAL	
Outdoor air temperature (deg. C)	ave. local station temp. reading	General illumination (LUX)	250
Room Temperature (deg. C)	25	Night illumination (LUX)	50
Mechanical ventilation:		Task illumination (LUX)	500
Volume (cu.m./hr.-person)	12.75	Colour rendering	essential:DESIRABLE:unnecessary
Velocity (m./hr.)	900	Standby light	ESSENTIAL:desirable:unnecessary
Pressure:		Emergency light	essential:DESIRABLE:unnecessary
Exhaust (psi)	NA	Daylight	essential:DESIRABLE:unnecessary
Inlet (psi)	NA	View out	essential:DESIRABLE:unnecessary
% Dust filtration	93% - 99% @ 1 micron	Privacy	essential:DESIRABLE:unnecessary
Humidity (% RH)	50	Black out	essential:desirable:UNNECESSARY
Cooling load (TR)	2.0		
SOUND		SAFETY	
Acceptable sound level (db)	50	Accessible hot surface:	NA
Speech privacy	essential:DESIRABLE:unnecessary	Maximum temperature (deg. C)	NA
Quality which cannot be	tonal impact	Domestic hot water:	at lavatory
tolerated		Maximum temperature (deg. C)	70
		Access limit	medical staff and patients
		Fire risk	LOW : medium : high
		Other risks	NA

Hospital: Secondary, 25-Bed		ROOM DATA SHEET		Department of Health HEALTH INFRASTRUCTURE SERVICE		
Updated Reference: June 1994		Department: NURSING UNIT		Room Title: TYPICAL 4-BED WARD		
				Reference Sheet Number: 25B-NU-RDS2.2C		
TECHNICAL DESIGN DATA:				LAYOUT OF ROOM AND SPACE COMPONENTS:		
DIRECT SERVICES		DESIGN DATA		<p>Scale 1:100 mts.</p>		
Disposal	hospital waste category: A,B,E,F					
Hot water	required at lavatory					
Cold water	req'd at lavatory and toilet fixtures					
Drainage	req'd at lavatory, toilet fixtures & fr					
Gas	oxygen outlet					
Compressed air	suction outlet with vacuum devices					
Steam	NA					
Others						
DIRECT DEMANDS ON FLOOR AND WALL						Key (Plan)
Loading	NA		1 Adjustable hospital bed		3 Nurses' call station w/pendant switch	7 Footstool
Spillage	SLIGHT : occasional : frequent		2 Chair, upright, stacking		4 Bedside cabinet	8 Curtain and rod
Foot traffic	light : MEDIUM : heavy		5 Bed light w/night light		6 Overbed table	9 Nurse call (emer)
Wheel traffic	light : MEDIUM : heavy		11 Lavatory			10 Nurse call dome light
Impacts	NA		Key (Section)			
Abrasion	NA		1 Adjustable hospital bed			
Easy maintenance	ESSENTIAL desirable unnecessary		3 Nurses' call station			
Vibration free	ESSENTIAL desirable unnecessary		4 Bedside cabinet			
Door sets	bed, stretcher trolley, wheelchair		5 Bed light			
	access		11 Suction outlet			
Windows	clear, solar control, privacy con-		12 Suction outlet			
	trol		13 Suction bottle bracket			
Internal glazing	nil					
				SPACE DEMANDS (Total Minimum Space Required in sq.m.) : 28.00		
				Space Components		Minimum Space Required/Component
				Ward Area		25.20 sq.m.
				Toilet and Bath		2.80 sq.m.