

VOLUME 3 - SCHEMATIC PLANS AND TECHNICAL REQUIREMENTS  
OF 25-BED HOSPITAL

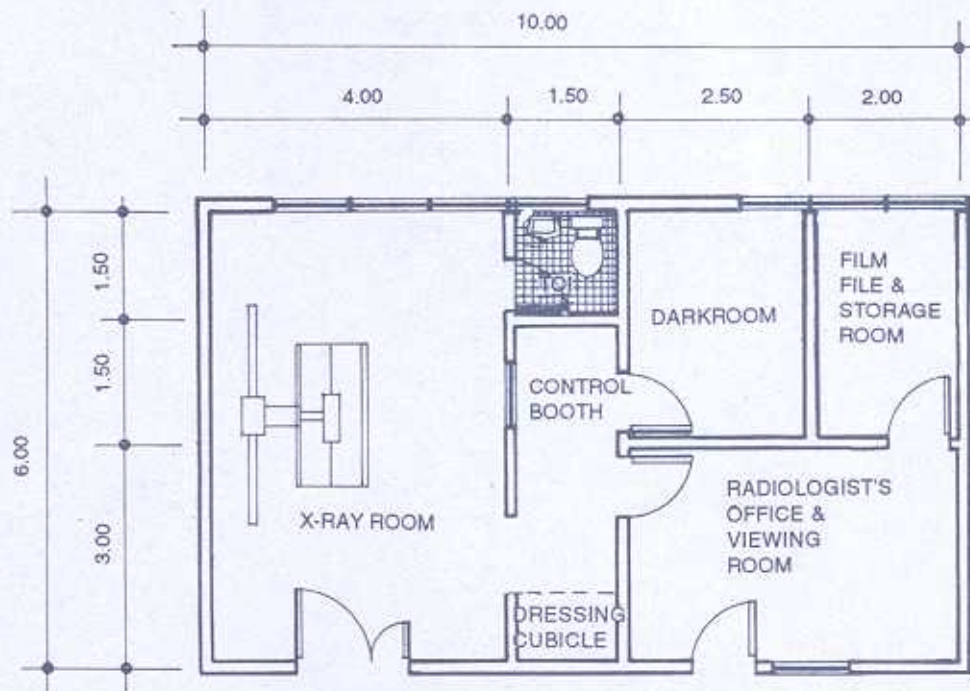
3.3 - ANCILLARY Service Facility

Hospital: Secondary, 25-Bed	SERVICE FACILITY SHEET INDEX		Department of Health HEALTH INFRASTRUCTURE SERVICE	
Updated Reference: June 1994	Service Facility Title: ANCILLARY		Reference Sheet Number: 25B-CL-SFSI1	
ROOM TITLE	SPACE DEMAND (SQ. MTS.)	TOTAL AREA (SQ. MTS.)	REFERENCE SHEET NUMBER	PAGE
RADIOLOGY		60.00	25B-AN-DDS1	3.3.1
X-ray Room	29.25		25B-AN-RDS1.1	3.3.1.1A
Control Booth	3.75		25B-AN-RDS1.2	3.3.1.2A
Dark Room	7.50		25B-AN-RDS1.3	3.3.1.3A
Radiologist's Office and Viewing Room	13.50		25B-AN-RDS1.4	3.3.1.4A
Film File and Storage Room	6.00		25B-AN-RDS1.5	3.3.1.5A
LABORATORY	36.00	36.00	25B-AN-RDS2.1	3.3.2.1A
PHARMACY	30.00	30.00	25B-AN-RDS 3.1	3.3.3.1A
OUTPATIENT		162.00	25B-AN-DDS4	3.3.4
Waiting Area	42.00		25B-AN-RDS4.1	3.3.4.1A
Admitting/Info Counter and Records	24.00		25B-AN-RDS4.2	3.3.4.2A
Examination/Treatment Room (Pedia/Under Five)	18.00		25B-AN-RDS4.3	3.3.4.3A
Examination/Treatment Room (Medical/Surgical)	18.00		25B-AN-RDS4.4	3.3.4.4A
Examination/Treatment Room (OB-Gyne/Family Planning)	18.00		25B-AN-RDS4.5	3.3.4.5A
Examination/Treatment Room (Dental)	18.00		25B-AN-RDS4.6	3.3.4.6A
Toilet Facilities	24.00		25B-AN-RDS4.7	3.3.4.7A
MEDICAL RECORDS ROOM	24.00	24.00	25B-AN-RDS5.1	3.3.5.1A
MEDICAL SOCIAL SERVICE ROOM	18.00	18.00	25B-AN-RDS6.1	3.3.6.1A
MORTUARY	36.00	36.00	25B-AN-DDS7	3.3.7
Lobby/Waiting Area	12.00		25B-AN-RDS7.1	3.3.7.1A
Autopsy Room	24.00		25B-AN-RDS8.1	3.3.7.2A
		342.00		

Hospital: Secondary, 25-Bed	DEPARTMENT DATA SHEET	Department of Health HEALTH INFRASTRUCTURE SERVICE
Updated Reference: June 1994	Department: RADIOLOGY	Reference Sheet Number: 25B-AN-DDS1

LAYOUT PER DEPARTMENT SHOWING ROOMS AND SPACE COMPONENTS:

Scale 1:100 mts.



Hospital: Secondary, 25-Bed	ROOM DATA SHEET		Department of Health HEALTH INFRASTRUCTURE SERVICE
Updated Reference: June 1994	Department: RADIOLOGY	Room Title: X-RAY ROOM	Reference Sheet Number: 25B-AN-RDS1.1B
TECHNICAL DESIGN DATA:			
ENVIRONMENTAL CONDITIONS	DESIGN DATA	ENVIRONMENTAL CONDITIONS	DESIGN DATA
AIR		LIGHTING AND VISUAL	
Outdoor air temperature (deg. C)	ave. local station temp. reading	General illumination (LUX)	150
Room Temperature (deg. C)	25	Night illumination (LUX)	NA
Mechanical ventilation:		Task illumination (LUX)	NA
Volume (cu.m./hr.-person)	12.75	Colour rendering	essential:DESIRABLE:unnecessary
Velocity (m./hr.)	750	Standby light	essential:DESIRABLE:unnecessary
Pressure:		Emergency light	essential:DESIRABLE:unnecessary
Exhaust (psi)	NA	Daylight	essential:desirable:UNNECESSARY
Inlet (psi)	NA	View out	essential:desirable:UNNECESSARY
% Dust filtration	93% - 99% @ 1 micron	Privacy	ESSENTIAL:desirable:unnecessary
Humidity (% RH)	50	Black out	essential:desirable:UNNECESSARY
Cooling load (TR)	2.0		
SOUND		SAFETY	
Acceptable sound level (db)	50	Accessible hot surface:	NA
Speech privacy	essential:DESIRABLE:unnecessary	Maximum temperature (deg. C)	NA
Quality which cannot be	tonal impact	Domestic hot water:	at sink and lavatory
tolerated		Maximum temperature (deg. C)	70
		Access limit	radiology staff and patients
		Fire risk	LOW : medium : high
		Other risks	exposure to radiation

Hospital: Secondary, 25-Bed	ROOM DATA SHEET		Department of Health HEALTH INFRASTRUCTURE SERVICE	
Updated Reference: June 1994	Department: RADIOLOGY	Room Title: X-RAY ROOM	Reference Sheet Number: 25B-AN-RDS1.1A	
FUNCTIONAL DESIGN REQUIREMENTS:				
<p>This activity space provides facilities needed for the following activities:</p> <ul style="list-style-type: none"> <li>a. Patients puts on hospital gown.</li> <li>b. X-ray technician/technologist prepares and positions patient for radiographic examination.</li> <li>c. Patient undergoes radiographic examinations and other necessary procedures as scheduled.</li> <li>d. Patient uses toilet.</li> </ul> <p>People Involved:</p> <ul style="list-style-type: none"> <li>1 x X-ray Technician/Technologist</li> <li>1 x Patient</li> <li>1 x Visiting Radiologist if there is any</li> <li>1 x Physician-in-Charge of Radiology</li> <li>X-ray interns if any</li> <li>I.W./Patient Watcher</li> </ul> <p>Planning Relationships:</p> <ul style="list-style-type: none"> <li>a. Close to Outpatient Department.</li> <li>b. Close to Emergency Department.</li> <li>c. Close to other Ancillary Service.</li> </ul> <p>This activity space provides facilities needed for the delivery of General Patient Care.</p>	<p>EQUIPMENT AND ACCESSORY CHECKLIST</p> <p>Radiographic unit 100mA at 100 kVp or better X-ray table with bucky Lead rubber gloves Vertical cassette stand Caliper, parallel arm IV stand  Rods for hanging lead rubber gown and gloves Immobilization devices Film I.D. marker Oxygen tank First aid kit Lead rubber apron Waste receptacle</p>	<p>QUANTITY</p> <p>1 1 1 pair 1 1 1  2 rods 1 1 set 1 1 set 1 1</p>	<p>REMARKS</p> <p>wall mounted graduated in cm with roller type stand       optional optional</p>	
	<p>FURNITURE AND FIXTURE CHECKLIST</p> <p>Storage cabinet Step stool Lavatory Water closet Sink</p>	<p>QUANTITY</p> <p>1 1 1 1 1</p>	<p>REMARKS</p> <p>with 2 steps</p>	
	<p>ADDITIONAL EQUIPMENT AND ENGINEERING TERMINALS</p> <p>Airconditioning unit (optional) Hospital pole transformer Rail, curtain, window Rail, curtain, cubicle Outlet, 10A, 2P, 240V  Outlet, 15A, 2P, 240V  Smoke detector</p>	<p>QUANTITY</p> <p>1 1 2 1 2  1  1</p>	<p>REMARKS</p> <p>package type 25 kVA (min.)   grounding type, parallel slots grounding type, tandem slots</p>	

Hospital: Secondary, 25-Bed	ROOM DATA SHEET		Department of Health HEALTH INFRASTRUCTURE SERVICE
Updated Reference: June 1994	Department RADIOLOGY	Room Title: CONTROL BOOTH	Reference Sheet Number: 25B-AN-RDS1.2B
TECHNICAL DESIGN DATA:			
ENVIRONMENTAL CONDITIONS	DESIGN DATA	ENVIRONMENTAL CONDITIONS	DESIGN DATA
AIR		LIGHTING AND VISUAL	
Outdoor air temperature (deg. C)	ave. local station temp. reading	General illumination (LUX)	500
Room Temperature (deg. C)	25	Night illumination (LUX)	NA
Mechanical ventilation:		Task illumination (LUX)	NA
Volume (cu.m./hr./person)	12.75	Colour rendering	essential:desirable:UNNECESSARY
Velocity (m./hr.)	750	Standby light	essential:DESIRABLE:unnecessary
Pressure:		Emergency light	essential:DESIRABLE:unnecessary
Exhaust (psi)	NA	Daylight	essential:desirable:UNNECESSARY
Inlet (psi)	NA	View out	essential:desirable:UNNECESSARY
% Dust filtration	93% - 99% @ 1 micron	Privacy	essential:DESIRABLE:unnecessary
Humidity (% RH)	50	Black out	ESSENTIAL:desirable:unnecessary
Cooling load (TR)	0.5		
SOUND		SAFETY	
Acceptable sound level (db)	50	Accessible hot surface:	NA
Speech privacy	essential:DESIRABLE:unnecessary	Maximum temperature (deg. C)	NA
Quality which cannot be	tonal impact	Domestic hot water:	NA
tolerated		Maximum temperature (deg. C)	NA
		Access limit	radiology staff
		Fire risk	LOW : medium : high
		Other risks	NA

Hospital: Secondary, 25-Bed	ROOM DATA SHEET		Department of Health HEALTH INFRASTRUCTURE SERVICE
Updated Reference: June 1994	Department: RADIOLOGY	Room Title: DARKROOM	Reference Sheet Number: 25B-AN-RDS1.3B
TECHNICAL DESIGN DATA:			
ENVIRONMENTAL CONDITIONS	DESIGN DATA	ENVIRONMENTAL CONDITIONS	DESIGN DATA
AIR		LIGHTING AND VISUAL	
Outdoor air temperature (deg. C)	ave. local station temp. reading	General illumination (LUX)	150
Room Temperature (deg. C)	25	Night illumination (LUX)	NA
Mechanical ventilation:		Task illumination (LUX)	NA
Volume (cu.m./hr.-person)	12.75	Colour rendering	essential:desirable:UNNECESSARY
Velocity (m./hr.)	750	Standby light	essential:DESIRABLE:unnecessary
Pressure:		Emergency light	essential:desirable:UNNECESSARY
Exhaust (psi)	1.15	Daylight	essential:desirable:UNNECESSARY
Inlet (psi)	1.15	View out	essential:desirable:UNNECESSARY
% Dust filtration	93% - 99% @ 1 micron	Privacy	ESSENTIAL:desirable:unnecessary
Humidity (% RH)	50	Black out	ESSENTIAL:desirable:unnecessary
Cooling load (TR)	0.5		
SOUND		SAFETY	
Acceptable sound level (db)	50	Accessible hot surface:	NA
Speech privacy	essential:DESIRABLE:unnecessary	Maximum temperature (deg. C)	NA
Quality which cannot be	tonal impact	Domestic hot water:	NA
tolerated		Maximum temperature (deg. C)	NA
		Access limit	radiology staff
		Fire risk	low : MEDIUM : high
		Other risks	Exposure to chemical fumes

Hospital: Secondary, 25-Bed	R O O M   D A T A   S H E E T		Department of Health HEALTH INFRASTRUCTURE SERVICE
Updated Reference: June 1994	Department: RADIOLOGY	Room Title: OFFICE AND VIEWING ROOM	Reference Sheet Number: 25B-AN-RDS1.4B
TECHNICAL DESIGN DATA:			
ENVIRONMENTAL CONDITIONS	DESIGN DATA	ENVIRONMENTAL CONDITIONS	DESIGN DATA
AIR		LIGHTING AND VISUAL	
Outdoor air temperature (deg. C)	ave. local station temp. reading	General illumination (LUX)	500
Room Temperature (deg. C)	25	Night illumination (LUX)	NA
Mechanical ventilation:		Task illumination (LUX)	NA
Volume (cu.m./hr.-person)	12.75	Colour rendering	ESSENTIAL:desirable:unnecessary
Velocity (m./hr.)	750	Standby light	essential:DESIRABLE:unnecessary
Pressure:		Emergency light	essential:desirable:UNNECESSARY
Exhaust (psi)	NA	Daylight	essential:desirable:UNNECESSARY
Inlet (psi)	NA	View out	essential:DESIRABLE:unnecessary
% Dust filtration	93% - 99% @ 1 micron	Privacy	essential:DESIRABLE:unnecessary
Humidity (% RH)	50	Black out	essential:desirable:UNNECESSARY
Cooling load (TR)	1.0		
SOUND		SAFETY	
Acceptable sound level (db)	50	Accessible hot surface:	NA
Speech privacy:	essential:DESIRABLE:unnecessary	Maximum temperature (deg. C)	NA
Quality which cannot be	tonal impact	Domestic hot water:	NA
tolerated		Maximum temperature (deg. C)	NA
		Access limit	radiology staff
		Fire risk	low : MEDIUM : high
		Other risks	NA

Hospital: Secondary, 25-Bed	ROOM DATA SHEET		Department of Health HEALTH INFRASTRUCTURE SERVICE
Updated Reference: June 1994	Department: RADIOLOGY	Room Title: FILM FILE AND STORAGE ROOM	Reference Sheet Number: 25B-AN-RDS1.5B
TECHNICAL DESIGN DATA			
ENVIRONMENTAL CONDITIONS	DESIGN DATA	ENVIRONMENTAL CONDITIONS	DESIGN DATA
AIR		LIGHTING AND VISUAL	
Outdoor air temperature (deg. C)	ave. local station temp. reading	General illumination (LUX)	500
Room Temperature (deg. C)	25	Night illumination (LUX)	NA
Mechanical ventilation:		Task illumination (LUX)	NA
Volume (cu.m./hr.-person)	12.75	Colour rendering	ESSENTIAL:desirable:unnecessary
Velocity (m./hr.)	750	Standby light	essential:DESIRABLE:unnecessary
Pressure:		Emergency light	essential:desirable:UNNECESSARY
Exhaust (psi)	NA	Daylight	ESSENTIAL:desirable:unnecessary
Inlet (psi)	NA	View out	essential:desirable:UNNECESSARY
% Dust filtration	93% - 99% @ 1 micron	Privacy	essential:DESIRABLE:unnecessary
Humidity (% RH)	50	Black out	essential:desirable:UNNECESSARY
Cooling load (TR)	1.0		
SOUND		SAFETY	
Acceptable sound level (db)	50	Accessible hot surface:	NA
Speech privacy	essential:DESIRABLE:unnecessary	Maximum temperature (deg. C)	NA
Quality which cannot be	tonal impact	Domestic hot water:	NA
tolerated		Maximum temperature (deg. C)	NA
		Access limit	radiology staff
		Fire risk	low : MEDIUM : high
		Other risks	NA

Hospital: Secondary, 25-Bed		ROOM DATA SHEET		Department of Health HEALTH INFRASTRUCTURE SERVICE							
Updated Reference: June 1994		Department: RADIOLOGY		Room Title: X-RAY ROOM							
				Reference Sheet Number: 25B-AN-RDS1.1C							
TECHNICAL DESIGN DATA:				LAYOUT OF ROOM AND SPACE COMPONENTS:							
DIRECT SERVICES:		DESIGN DATA		Scale 1:100 mts.							
Disposal		hospital waste category: A,C									
Hot water		NA									
Cold water		required at sink & toilet fixtures									
Drainage		req'd at sink & toi. fixtures & flr.									
Gas		NA									
Compressed air		NA									
Steam		NA									
Others											
DIRECT DEMANDS ON FLOOR AND WALL											
Loading		light : medium : heavy									
Spillage		slight : OCCASIONAL : frequent									
Foot traffic		light : MEDIUM : heavy									
Wheel traffic		light : MEDIUM : heavy									
Impacts		NA									
Abrasion		SLIGHT : occasional : frequent									
Easy maintenance		ESSENTIAL:desirable:unnecessary									
Vibration free		ESSENTIAL:desirable:unnecessary		SPACE DEMANDS (Total Minimum Space Required in sq.m.) : 29.25							
Door sets		See Appendix G for door details		<table border="1"> <thead> <tr> <th>Space Components</th> <th>Minimum Space Required/Component</th> </tr> </thead> <tbody> <tr> <td>X-ray Room</td> <td>27.00 sq. m.</td> </tr> <tr> <td>Toilet</td> <td>2.25 sq. m.</td> </tr> </tbody> </table>		Space Components	Minimum Space Required/Component	X-ray Room	27.00 sq. m.	Toilet	2.25 sq. m.
Space Components	Minimum Space Required/Component										
X-ray Room	27.00 sq. m.										
Toilet	2.25 sq. m.										
Windows		clear, solar control, window sill		REGULATIONS AND NOTES:							
		height - 2.00 mts.									
Internal glazing		lead glass		See Appendix G for detailed requirements.							

Hospital: Secondary, 25-Bed	ROOM DATA SHEET		Department of Health HEALTH INFRASTRUCTURE SERVICE										
Updated Reference: June 1994	Department: RADIOLOGY	Room Title: CONTROL BOOTH	Reference Sheet Number: 25B-AN-RDS1,2C										
TECHNICAL DESIGN DATA:		LAYOUT OF ROOM AND SPACE COMPONENTS:											
DIRECT SERVICES	DESIGN DATA	<p>Scale 1:100 mts.</p> <p>Key</p> <table> <tr> <td>1 Control console</td> <td>6 Lead glass viewing window</td> </tr> <tr> <td>2 Cassette rack</td> <td>7 Step stool</td> </tr> <tr> <td>3 Cassette pass box</td> <td>8 Microphone</td> </tr> <tr> <td>4 Safety box (fuse box)</td> <td>9 Poured concrete wall</td> </tr> <tr> <td>5 Intercom</td> <td></td> </tr> </table>		1 Control console	6 Lead glass viewing window	2 Cassette rack	7 Step stool	3 Cassette pass box	8 Microphone	4 Safety box (fuse box)	9 Poured concrete wall	5 Intercom	
1 Control console	6 Lead glass viewing window												
2 Cassette rack	7 Step stool												
3 Cassette pass box	8 Microphone												
4 Safety box (fuse box)	9 Poured concrete wall												
5 Intercom													
Disposal	hospital waste category: A												
Hot water	NA												
Cold water	NA												
Drainage	NA												
Gas	NA												
Compressed air	NA												
Steam	NA												
Others													
DIRECT DEMANDS ON FLOOR AND WALL													
Loading	NA												
Spillage	NA												
Foot traffic	light : MEDIUM : heavy												
Wheel traffic	NA												
Impacts	NA												
Abrasion	NA												
Easy maintenance	ESSENTIAL:desirable:unnecessary												
Vibration free	essential:DESIRABLE:unnecessary												
Door sets	nil, open to circulation												
		SPACE DEMANDS (Total Minimum Space Required in sq.m) : 3.75											
Windows	nil	REGULATIONS AND NOTES:											
		See Appendix G for detailed requirements.											
Internal glazing	lead glass viewing window												

Hospital: Secondary, 25-Bed	ROOM DATA SHEET		Department of Health HEALTH INFRASTRUCTURE SERVICE																				
Updated Reference: June 1994	Department: RADIOLOGY	Room Title: DARKROOM	Reference Sheet Number: 25B-AN-RDS1.3C																				
TECHNICAL DESIGN DATA:		LAYOUT OF ROOM AND SPACE COMPONENTS:																					
DIRECT SERVICES	DESIGN DATA	<p>Scale: 1:100 mts.</p>																					
Disposal	hospital waste category: A,D																						
Hot water	NA																						
Cold water	required at processing tank & sink																						
Drainage	required at sink, tank & floor																						
Gas	NA																						
Compressed air	NA																						
Steam	NA																						
Others																							
DIRECT DEMANDS ON FLOOR AND WALL																							
Loading	NA																						
Spillage	slight : occasioal : FREQUENT	<p>Key</p> <table border="0"> <tr> <td>1 Manual processing tanks</td> <td>11 Metallic stem dial type thermometer</td> </tr> <tr> <td>2 Pass box</td> <td>12 Film loading counter</td> </tr> <tr> <td>3 Safelight</td> <td>13 Film bin</td> </tr> <tr> <td>4 Exhaust fan</td> <td>14 Steel rods</td> </tr> <tr> <td>5 Luminous timer</td> <td>15 Smoke detector</td> </tr> <tr> <td>6 Sink</td> <td>16 Intercom</td> </tr> <tr> <td>7 Film dryer</td> <td>17 Light tight air-inlet</td> </tr> <tr> <td>8 Film hanger rack</td> <td>18 A pair of plastic paddles</td> </tr> <tr> <td>9 Towel bar</td> <td>19 Fiber glass tank or container with cover</td> </tr> <tr> <td>10 Waste receptacle</td> <td></td> </tr> </table>		1 Manual processing tanks	11 Metallic stem dial type thermometer	2 Pass box	12 Film loading counter	3 Safelight	13 Film bin	4 Exhaust fan	14 Steel rods	5 Luminous timer	15 Smoke detector	6 Sink	16 Intercom	7 Film dryer	17 Light tight air-inlet	8 Film hanger rack	18 A pair of plastic paddles	9 Towel bar	19 Fiber glass tank or container with cover	10 Waste receptacle	
1 Manual processing tanks	11 Metallic stem dial type thermometer																						
2 Pass box	12 Film loading counter																						
3 Safelight	13 Film bin																						
4 Exhaust fan	14 Steel rods																						
5 Luminous timer	15 Smoke detector																						
6 Sink	16 Intercom																						
7 Film dryer	17 Light tight air-inlet																						
8 Film hanger rack	18 A pair of plastic paddles																						
9 Towel bar	19 Fiber glass tank or container with cover																						
10 Waste receptacle																							
Wheel traffic	NA																						
Impacts	NA																						
Abrasion	NA																						
Easy maintenance	ESSENTIAL:desirable:unnecessary																						
Vibration free	essential:DESIRABLE:unnecessary																						
Door sets	light lock painted matte black																						
	with door lock																						
Windows	nil, provide light lock air inlet																						
	and air outlet																						
Internal glazing	nil																						
SPACE DEMANDS (Total Minimum Space Required in sq.m.) : 7.50		<table border="1"> <tr> <td>Space Components</td> <td>Minimum Space Required/Component</td> </tr> <tr> <td> </td> <td> </td> </tr> </table>		Space Components	Minimum Space Required/Component																		
Space Components	Minimum Space Required/Component																						
REGULATIONS AND NOTES:		See Appendix G for detailed requirements.																					

Hospital: Secondary, 25-Bed	R O O M   D A T A   S H E E T		Department of Health HEALTH INFRASTRUCTURE SERVICE
Updated Reference: June 1994	Department: RADIOLOGY	Room Title: CONTROL BOOTH	Reference Sheet Number: 25B-AN-RDS1.2A

FUNCTIONAL DESIGN REQUIREMENTS:			
<p>This activity space provides facilities needed for the following activities:</p> <ul style="list-style-type: none"> <li>a. X-ray Technician/Technologist formulates/sets radiographic techniques.</li> <li>b. X-ray Technician/Technologist gives instruction to patient undergoing radiographic examination.</li> <li>c. X-ray Technician/Technologist conducts radiographic exposure.</li> <li>d. X-ray Technician/Technologist views patient during radiographic examination.</li> </ul> <p>People Involved:</p> <p>1 x X-ray Technician/Technologist</p> <p>Planning Relationships:</p> <ul style="list-style-type: none"> <li>a. Located within X-ray Room.</li> <li>b. Adjacent to Darkroom.</li> </ul>	EQUIPMENT AND ACCESSORY CHECKLIST	QUANTITY	REMARKS
	Control console of radiographic unit	1	optional
	Cassette pass box	1	
	Microphone	1	
	FURNITURE AND FIXTURE CHECKLIST	QUANTITY	REMARKS
	Cassette rack	1	with five partitions for cassettes
	Step stool	1	with two steps
	ADDITIONAL EQUIPMENT AND ENGINEERING TERMINALS	QUANTITY	REMARKS
	Outlet, 10A, 2P, 240V	1	grounding type, parallel slots for 100mA, 125kVp or 300mA, 125 kVp x-ray unit
	Circuit breaker 60A, 2P, 250V	1	
	Outlet intercom	1	

Hospital: Secondary, 25-Bed	ROOM DATA SHEET		Department of Health HEALTH INFRASTRUCTURE SERVICE
Updated Reference: June 1994	Department: RADIOLOGY	Room Title: FILM FILE AND STORAGE ROOM	Reference Sheet Number: 25B-AN-RDS1.5C
TECHNICAL DESIGN DATA:		LAYOUT OF ROOM AND SPACE COMPONENTS:	
DIRECT SERVICES	DESIGN DATA	Scale 1:100 mts.	
Disposal	hospital waste category: A		
Hot water	NA		
Cold water	NA		
Drainage	NA		
Gas	NA		
Compressed air	NA		
Steam	NA		
Others			
DIRECT DEMANDS ON FLOOR AND WALL			
Loading	NA		
Spillage	NA		
Foot traffic	LIGHT : medium : heavy	Key	
Wheel traffic	NA	1 Open shelves	
Impacts	NA	2 Aluminum or wooden movable ladder	
Abrasion	NA	3 Ceiling fan	
Easy maintenance	essential:DESIRABLE:unnecessary	4 Smoke detector	
Vibration free	essential:desirable:UNNECESSARY	SPACE DEMANDS (Total Minimum Space Required in sq.m.) : 6.00	
Door sets	ordinary access door	Space Components	Minimum Space Required/Component
Windows	clear with solar control	REGULATIONS AND NOTES:	
Internal glazing	nil	See Appendix G for detailed requirements	

Hospital: Secondary, 25-Bed	ROOM DATA SHEET		Department of Health HEALTH INFRASTRUCTURE SERVICE
Updated Reference: June 1994	Department: RADIOLOGY	Room Title: DARKROOM	Reference Sheet Number: 25B-AN-RDS1,3A

FUNCTIONAL DESIGN REQUIREMENTS:

<p>This activity space provides facilities needed for the following activities:</p> <ul style="list-style-type: none"> <li>a. X-ray Technician/Technologist mixes/prepares processing chemicals.</li> <li>b. X-ray Technician/Technologist loads unexposed x-ray film into the cassette.</li> <li>c. X-ray Technician/Technologist unloads exposed x-ray film from cassette for processing.</li> <li>d. X-ray Technician/Technologist process x-ray films.</li> <li>e. X-ray Technician/Technologist cleans manual processing equipment and performs darkroom quality control tests.</li> </ul> <p>People Involved:</p> <ul style="list-style-type: none"> <li>1 x X-ray Technician/Technologist</li> <li>X-ray Interns if there are any</li> </ul> <p>Planning Relationships:</p> <ul style="list-style-type: none"> <li>a. Adjacent to X-ray Room.</li> <li>b. Adjacent to Control Booth.</li> </ul>	EQUIPMENT AND ACCESSORY CHECKLIST	QUANTITY	REMARKS
	Manual processing tanks	1	1 master tank 2 insert tanks
	Pass box X-ray cassettes with intensifying screens	12	3 pcs for each size 10"x8"x14", 14"x17", 10"x12"
	Safelight	1	wall mounted above dry area
	Exhaust fan (air inlet and air outlet)	2	wall mounted: Exhaust fan above processing tank, air inlet near the floor
	Luminous interval timer	1	
	Film dryer	1	
	Film hanger rack	1	wall mounted, available for all sizes of x-ray filmhanger
	Metallic stem dial type thermometer	1	
	Towel bar	1	
Fiber glass tank or container with cover		to store used fixer	
Film bin	1	see Appendix G	
Steel rods for hanging wet films	2		
A pair of plastic paddles	2	1 for mixing fixer solution 1 for mixing dev. sol.	
Waste can receptacle	1		
	FURNITURE AND FIXTURE CHECKLIST	QUANTITY	REMARKS
	Counter for film loading Sink	1	
	ADDITIONAL EQUIPMENT AND ENGINEERING TERMINALS	QUANTITY	REMARKS
	Outlet, intercom	1	
	Outlet, 10A, 2P, 240V, duplex	4	grounding type, parallel slots
	Smoke detector	1	

Hospital: Secondary, 25-Bed	ROOM DATA SHEET		Department of Health HEALTH INFRASTRUCTURE SERVICE
Updated Reference: June 1994	Department: RADIOLOGY	Room Title: OFFICE AND VIEWING ROOM	Reference Sheet Number: 25B-AN-RDS1.4A
FUNCTIONAL DESIGN REQUIREMENTS:			
<p>This activity space provides facilities needed for the following activities:</p> <ul style="list-style-type: none"> <li>a. X-ray Technician/Technologist receives request of patients to be x-rayed.</li> <li>b. X-ray Technician/Technologist schedules patients for radiographic examination.</li> <li>c. Physician-in-Charge does x-ray film interpretation.</li> <li>d. Physician-in-Charge views, interprets radiographic procedures done.</li> <li>e. X-ray Technician/Technologist types results, files and retrieve records.</li> <li>f. X-ray Technician/Technologist issues results of radiographic procedure done.</li> </ul> <p>People Involved:</p> <ul style="list-style-type: none"> <li>1 x Radiologist/Physician-in-Charge</li> <li>1 x X-ray Technician/Technologist</li> </ul> <p>Planning Relationships:</p> <ul style="list-style-type: none"> <li>a. Close to X-ray Room.</li> <li>b. Close to Film File and Storage Room.</li> </ul>	<p>EQUIPMENT AND ACCESSORY CHECKLIST</p> <p>Negastoscope</p> <p>Typewriter</p>	<p>QUANTITY</p> <p>1</p> <p>1</p>	<p>REMARKS</p> <p>2 banks (14"x17") per bank</p>
	<p>FURNITURE AND FIXTURE CHECKLIST</p> <p>Executive Desk, 750x1500</p> <p>Chair, upright, stacking</p> <p>Steel filing cabinet, 500x700</p> <p>Executive chair</p> <p>Wall cabinet</p> <p>Counter below negastoscope</p> <p>Typewriter table, 400x800</p>	<p>QUANTITY</p> <p>1</p> <p>1</p> <p>3</p> <p>1</p> <p>1</p> <p>1</p> <p>1</p>	<p>REMARKS</p>
	<p>ADDITIONAL EQUIPMENT AND ENGINEERING TERMINALS</p> <p>Rail, curtain, window</p> <p>Outlet, telephone</p> <p>Outlet, 10A, 2P, 240V, duplex</p> <p>Outlet, 15A, 2P, 240V, single</p> <p>Smoke detector</p> <p>Outlet, intercom</p> <p>Electric fan</p>	<p>QUANTITY</p> <p>1</p> <p>1</p> <p>3</p> <p>1</p> <p>1</p> <p>1</p> <p>1</p>	<p>REMARKS</p> <p>local grounding type, parallel slots</p> <p>grounding type tandem slot</p> <p>if airconditioning is not available</p>

Hospital: Secondary, 25-Bed	R O O M   D A T A   S H E E T		Department of Health HEALTH INFRASTRUCTURE SERVICE
Updated Reference: June 1994	Department: LABORATORY	Room Title: LABORATORY	Reference Sheet Number: 25B-AN-RDS2.1B
TECHNICAL DESIGN DATA:			
ENVIRONMENTAL CONDITIONS	DESIGN DATA	ENVIRONMENTAL CONDITIONS	DESIGN DATA
AIR		LIGHTING AND VISUAL	
Outdoor air temperature (deg. C)	ave. local station temp. reading	General illumination (LUX)	500
Room Temperature (deg. C)	25	Night illumination (LUX)	NA
Mechanical ventilation:		Task illumination (LUX)	1000
Volume (cu.m./hr.-person)	12.75	Colour rendering	ESSENTIAL:desirable:unnecessary
Velocity (m./hr.)	900	Standby light	ESSENTIAL:desirable:unnecessary
Pressure:		Emergency light	essential:DESIRABLE:unnecessary
Exhaust (psi)	1.15	Daylight	essential:desirable:UNNECESSARY
Inlet (psi)	1.15	View out	essential:DESIRABLE:unnecessary
% Dust filtration	93% - 99% @ 1 micron	Privacy	essential:DESIRABLE:unnecessary
Humidity (% RH)	50	Black out	essential:desirable:UNNECESSARY
Cooling load (TR)	2.5		
SOUND		SAFETY	
Acceptable sound level (db)	50	Accessible hot surface:	some laboratory equipment
Speech privacy	essential:DESIRABLE:unnecessary	Maximum temperature (deg. C)	100
Quality which cannot be	tonal impact	Domestic hot water:	at sink
tolerated		Maximum temperature (deg. C)	70
		Access limit	medical staff
		Fire risk	LOW : medium : high
		Other risks	exposure to hazardous chemicals

Hospital: Secondary, 25-Bed	ROOM DATA SHEET		Department of Health HEALTH INFRASTRUCTURE SERVICE																																						
Updated Reference: June 1994	Department: PHARMACY	Room Title: PHARMACY	Reference Sheet Number: 25B-AN-RDS3.1A																																						
FUNCTIONAL DESIGN REQUIREMENTS:																																									
<p>This activity space provides facilities needed for the following activities:</p> <ul style="list-style-type: none"> <li>a. Drugs and medicines for actual procurement are requisitioned.</li> <li>b. Solutions are prepared and/or sterilized.</li> <li>c. Required reports are recorded &amp; prepared.</li> <li>d. Biologicals are allocated &amp; distributed to RHUs in catchment areas.</li> <li>e. Drug information service is provided.</li> <li>f. Pharmaceuticals are manufactured.</li> <li>g. Medications are supplied to nursing units.</li> <li>h. Biologicals are stored and dispensed.</li> <li>i. Injectable solutions prepared and sterilized.</li> <li>j. Handwashing</li> </ul>		<p>EQUIPMENT AND ACCESSORY CHECKLIST</p> <table border="1"> <thead> <tr> <th></th> <th>QUANTITY</th> <th>REMARKS</th> </tr> </thead> <tbody> <tr><td>Balance</td><td>1</td><td></td></tr> <tr><td>Refrigerator, 8 cubic feet, with biological drawers</td><td>1</td><td></td></tr> <tr><td>Typewriter</td><td>1</td><td></td></tr> <tr><td>Cold dog/packs</td><td></td><td></td></tr> <tr><td>Calculating machine</td><td>1</td><td></td></tr> <tr><td>Prescription scale</td><td>1</td><td>heavy duty</td></tr> <tr><td>Prescription scale</td><td>1</td><td></td></tr> <tr><td>Counter scale</td><td>1</td><td></td></tr> <tr><td>Sanitary waste receptacle</td><td>1</td><td></td></tr> <tr><td>Electric stove</td><td>1</td><td></td></tr> </tbody> </table>		QUANTITY	REMARKS	Balance	1		Refrigerator, 8 cubic feet, with biological drawers	1		Typewriter	1		Cold dog/packs			Calculating machine	1		Prescription scale	1	heavy duty	Prescription scale	1		Counter scale	1		Sanitary waste receptacle	1		Electric stove	1							
	QUANTITY	REMARKS																																							
Balance	1																																								
Refrigerator, 8 cubic feet, with biological drawers	1																																								
Typewriter	1																																								
Cold dog/packs																																									
Calculating machine	1																																								
Prescription scale	1	heavy duty																																							
Prescription scale	1																																								
Counter scale	1																																								
Sanitary waste receptacle	1																																								
Electric stove	1																																								
<p>People Involved:</p> <p>1 x Pharmacist</p>		<p>FURNITURE AND FIXTURE CHECKLIST</p> <table border="1"> <thead> <tr> <th></th> <th>QUANTITY</th> <th>REMARKS</th> </tr> </thead> <tbody> <tr><td>Chair, upright, stacking</td><td>1</td><td></td></tr> <tr><td>Transaction counter, 1100 mm high</td><td>1</td><td></td></tr> <tr><td>Drug cabinet, sectional type</td><td>1</td><td></td></tr> <tr><td>Counter, cabinets and drawers below</td><td></td><td></td></tr> <tr><td>Counter, open adjustable shelves below</td><td></td><td></td></tr> <tr><td>Desk, 750x1200</td><td>1</td><td></td></tr> <tr><td>Swivel chair</td><td>1</td><td></td></tr> <tr><td>Steel filing cabinet, 500x700</td><td>1</td><td></td></tr> <tr><td>Book shelves</td><td></td><td></td></tr> <tr><td>Cabinet, adjustable shelves</td><td></td><td></td></tr> <tr><td>Adjustable stool</td><td>2</td><td></td></tr> <tr><td>Sink in counter with gooseneck spout and drainboard</td><td>1</td><td></td></tr> </tbody> </table>		QUANTITY	REMARKS	Chair, upright, stacking	1		Transaction counter, 1100 mm high	1		Drug cabinet, sectional type	1		Counter, cabinets and drawers below			Counter, open adjustable shelves below			Desk, 750x1200	1		Swivel chair	1		Steel filing cabinet, 500x700	1		Book shelves			Cabinet, adjustable shelves			Adjustable stool	2		Sink in counter with gooseneck spout and drainboard	1	
	QUANTITY	REMARKS																																							
Chair, upright, stacking	1																																								
Transaction counter, 1100 mm high	1																																								
Drug cabinet, sectional type	1																																								
Counter, cabinets and drawers below																																									
Counter, open adjustable shelves below																																									
Desk, 750x1200	1																																								
Swivel chair	1																																								
Steel filing cabinet, 500x700	1																																								
Book shelves																																									
Cabinet, adjustable shelves																																									
Adjustable stool	2																																								
Sink in counter with gooseneck spout and drainboard	1																																								
<p>Planning Relationships:</p> <ul style="list-style-type: none"> <li>a. Close to other Ancillary Service.</li> <li>b. Close to Outpatient Service.</li> <li>c. Close to Inpatient Service.</li> <li>d. Close to Business and Finance Office.</li> <li>e. Close to Frontline Services.</li> </ul>		<p>ADDITIONAL EQUIPMENT AND ENGINEERING TERMINALS</p> <table border="1"> <thead> <tr> <th></th> <th>QUANTITY</th> <th>REMARKS</th> </tr> </thead> <tbody> <tr><td>Rail, curtain, window</td><td>2</td><td></td></tr> <tr><td>Outlet, telephone</td><td>1</td><td></td></tr> <tr><td>Outlet, 10A, 2P, 240V, duplex</td><td>5</td><td>grounding type, parallel slots</td></tr> <tr><td>Outlet, 15A, 2P, 240V</td><td>1</td><td>grounding type, tandem slots</td></tr> <tr><td>Outlet, intercom</td><td>1</td><td></td></tr> <tr><td>Smoke detector</td><td>1</td><td></td></tr> </tbody> </table>		QUANTITY	REMARKS	Rail, curtain, window	2		Outlet, telephone	1		Outlet, 10A, 2P, 240V, duplex	5	grounding type, parallel slots	Outlet, 15A, 2P, 240V	1	grounding type, tandem slots	Outlet, intercom	1		Smoke detector	1																			
	QUANTITY	REMARKS																																							
Rail, curtain, window	2																																								
Outlet, telephone	1																																								
Outlet, 10A, 2P, 240V, duplex	5	grounding type, parallel slots																																							
Outlet, 15A, 2P, 240V	1	grounding type, tandem slots																																							
Outlet, intercom	1																																								
Smoke detector	1																																								

Hospital: Secondary, 25-Bed	ROOM DATA SHEET		Department of Health HEALTH INFRASTRUCTURE SERVICE																				
Updated Reference: June 1994	Department: PHARMACY	Room Title: PHARMACY	Reference Sheet Number: 25B-AN-RDS3.1C																				
TECHNICAL DESIGN DATA:		LAYOUT OF ROOM AND SPACE COMPONENTS:																					
DIRECT SERVICES	DESIGN DATA	<p>Scale 1:100 mts.</p> <p>Key</p> <table><tr><td>1 Desk, 750x200</td><td>13 Drug cabinets, sectional type</td></tr><tr><td>2 Swivel chair</td><td>14 Prescription counter, cabinets and drawers below</td></tr><tr><td>3 Steel filing cabinet, 500x700</td><td>15 Counter, cabinets and drawers below</td></tr><tr><td>4 Bookshelves</td><td>16 Open adjustable shelves, 457 mm above counter</td></tr><tr><td>5 Prescription scale</td><td>17 Refrigerator, 8 cu. ft.</td></tr><tr><td>6 Prescription scale (heavy duty)</td><td>18 Gas outlet</td></tr><tr><td>7 Counter scale</td><td>19 Transaction counter</td></tr><tr><td>8 Counter, open adjustable shelves below</td><td>20 Bulk storage</td></tr><tr><td>9 Sanitary waste can</td><td>21 Electric stove</td></tr><tr><td>10 Sink in counter with gooseneck spout and drainboard</td><td>22 Adjustable Stool</td></tr></table>		1 Desk, 750x200	13 Drug cabinets, sectional type	2 Swivel chair	14 Prescription counter, cabinets and drawers below	3 Steel filing cabinet, 500x700	15 Counter, cabinets and drawers below	4 Bookshelves	16 Open adjustable shelves, 457 mm above counter	5 Prescription scale	17 Refrigerator, 8 cu. ft.	6 Prescription scale (heavy duty)	18 Gas outlet	7 Counter scale	19 Transaction counter	8 Counter, open adjustable shelves below	20 Bulk storage	9 Sanitary waste can	21 Electric stove	10 Sink in counter with gooseneck spout and drainboard	22 Adjustable Stool
1 Desk, 750x200	13 Drug cabinets, sectional type																						
2 Swivel chair	14 Prescription counter, cabinets and drawers below																						
3 Steel filing cabinet, 500x700	15 Counter, cabinets and drawers below																						
4 Bookshelves	16 Open adjustable shelves, 457 mm above counter																						
5 Prescription scale	17 Refrigerator, 8 cu. ft.																						
6 Prescription scale (heavy duty)	18 Gas outlet																						
7 Counter scale	19 Transaction counter																						
8 Counter, open adjustable shelves below	20 Bulk storage																						
9 Sanitary waste can	21 Electric stove																						
10 Sink in counter with gooseneck spout and drainboard	22 Adjustable Stool																						
Disposal	hospital waste category: A,D,G																						
Hot water	required at sink																						
Cold water	required at sink																						
Drainage	required at sink and floor																						
Gas	1 outlet required (non-medical)																						
Compressed air	NA																						
Steam	NA																						
Others																							
DIRECT DEMANDS ON FLOOR AND WALL																							
Loading	LIGHT : medium : heavy																						
Spillage	slight ; OCCASIONAL : frequent																						
Foot traffic	LIGHT : medium : heavy																						
Wheel traffic	LIGHT : medium : heavy																						
Impacts	NA																						
Abrasion	NA																						
Easy maintenance	ESSENTIAL-desirable-unnecessary																						
Vibration free	ESSENTIAL-desirable-unnecessary																						
Door sets	wheel chair access																						
Windows	clear with solar control																						
Internal glazing	clear																						

Hospital: Secondary, 25-Bed	ROOM DATA SHEET		Department of Health HEALTH INFRASTRUCTURE SERVICE
Updated Reference: June 1994	Department: DIETARY	Room Title: GARBAGE DISPOSAL CUBICLE	Reference Sheet Number: 25B-DI-RDS1.7C
TECHNICAL DESIGN DATA:		LAYOUT OF ROOM AND SPACE COMPONENTS:	
DIRECT SERVICES	DESIGN DATA	<p>Scale: 1:100 mts.</p>	
Disposal	hospital waste category: A		
Hot water	NA		
Cold water	at faucet		
Drainage	required at floor		
Gas	NA		
Compressed air	NA		
Steam	NA		
Others			
DIRECT DEMANDS ON FLOOR AND WALL			
Loading	light : medium : HEAVY	SPACE DEMANDS (Total Minimum Space Required in sq.m.) : 5.00	
Spillage	slight : OCCASIONAL : frequent	Space Components	Minimum Space Required/Component
Foot traffic	light : MEDIUM : heavy		
Wheel traffic	light : MEDIUM : heavy		
Impacts	slight : occasional : FREQUENT		
Abrasion	slight : occasional : FREQUENT		
Easy maintenance	ESSENTIAL : desirable : unnecessary		
Vibration free	essential : desirable : UNNECESSARY		
Door sets	provide separate access from		
	outside		
Windows	nil	REGULATIONS AND NOTES:	
Internal glazing	nil		

Hospital: Secondary, 25-Bed	ROOM DATA SHEET		Department of Health HEALTH INFRASTRUCTURE SERVICE
Updated Reference: June 1994	Department: DIETARY	Room Title: STAFF DINING ROOM	Reference Sheet Number: 25B-DI-RDS1.5C
TECHNICAL DESIGN DATA:		LAYOUT OF ROOM AND SPACE COMPONENTS:	
DIRECT SERVICES	DESIGN DATA	<p>Scale 1:100 mts.</p>	
Disposal	hospital waste category: A		
Hot water	required at lavatory		
Cold water	required at lavatory		
Drainage	required at lavatory		
Gas	NA		
Compressed air	NA		
Steam	NA		
Others			
DIRECT DEMANDS ON FLOOR AND WALL			
Loading	NA	SPACE DEMANDS (Total Minimum Space Required in sq.m.) : 21.00	
Spillage	slight : OCCASIONAL : frequent	Space Components	Minimum Space Required/Component
Foot traffic	light : MEDIUM : heavy		
Wheel traffic	LIGHT : medium : heavy		
Impacts	NA		
Abrasion	NA		
Easy maintenance	ESSENTIAL desirable unnecessary		
Vibration free	ESSENTIAL desirable unnecessary		
Door sets	wheelchair access		
Windows	clear: solar control	REGULATIONS AND NOTES:	
		Minimum area per diner : 1.00 sq.m.	
Internal glazing	clear		

Hospital: Secondary, 25-Bed	ROOM DATA SHEET		Department of Health HEALTH INFRASTRUCTURE SERVICE																
Updated Reference: June 1994	Department: DIETARY	Room Title: FOOD PREPARATION AREA	Reference Sheet Number: 25B-DI-RDS1.4C																
TECHNICAL DESIGN DATA:		LAYOUT OF ROOM AND SPACE COMPONENTS:																	
DIRECT SERVICES	DESIGN DATA	<p>Scale 1:100 mts.</p> <p><b>Key</b></p> <table border="0"> <tr> <td>1 Refrigerator</td> <td>5 Range hood</td> </tr> <tr> <td>2 Preparation table, 762x2000 w/two drawers and undershelf</td> <td>6 Range, oven below</td> </tr> <tr> <td>3 Sink (610x610x357) and drain board in counter with cabinets below</td> <td>7 Counter w/open shelves below</td> </tr> <tr> <td>4 Counter, 850mm high with cabinets below</td> <td>8 Pass through window</td> </tr> <tr> <td></td> <td>9 Gas tanks enclosed by grills</td> </tr> <tr> <td></td> <td>10 Wall cabinets and shelves</td> </tr> <tr> <td></td> <td>11 Freezer</td> </tr> <tr> <td></td> <td>12 Counter for tray assembly</td> </tr> </table>		1 Refrigerator	5 Range hood	2 Preparation table, 762x2000 w/two drawers and undershelf	6 Range, oven below	3 Sink (610x610x357) and drain board in counter with cabinets below	7 Counter w/open shelves below	4 Counter, 850mm high with cabinets below	8 Pass through window		9 Gas tanks enclosed by grills		10 Wall cabinets and shelves		11 Freezer		12 Counter for tray assembly
1 Refrigerator	5 Range hood																		
2 Preparation table, 762x2000 w/two drawers and undershelf	6 Range, oven below																		
3 Sink (610x610x357) and drain board in counter with cabinets below	7 Counter w/open shelves below																		
4 Counter, 850mm high with cabinets below	8 Pass through window																		
	9 Gas tanks enclosed by grills																		
	10 Wall cabinets and shelves																		
	11 Freezer																		
	12 Counter for tray assembly																		
Disposal	hospital waste category : A																		
Hot water	required at sink																		
Cold water	required at sink																		
Drainage	required at sink and floor																		
Gas	LPG supply																		
Compressed air	NA																		
Steam	NA																		
Others																			
DIRECT DEMANDS ON FLOOR AND WALL																			
Loading	NA																		
Spillage	slight : occasional : FREQUENT																		
Foot traffic	light : medium : HEAVY																		
Wheel traffic	light : medium : HEAVY																		
Impacts	slight : OCCASIONAL : frequent																		
Abrasion	slight : OCCASIONAL : frequent																		
Easy maintenance	ESSENTIAL:desirable:unnecessary																		
Vibration free	ESSENTIAL:desirable:unnecessary																		
Door sets	nil, open to circulation																		
SPACE DEMANDS (Total Minimum Space Required in sq.m.) : 30.00																			
Windows	clear, solar control	Space Components	Minimum Space Required/Component																
Internal glazing	clear	REGULATIONS AND NOTES:																	

Hospital: Secondary, 25-Bed	ROOM DATA SHEET		Department of Health HEALTH INFRASTRUCTURE SERVICE
Updated Reference: June 1994	Department: DIETARY	Room Title: FOOD PREPARATION AREA	Reference Sheet Number: 25B-DI-RDS1.4A

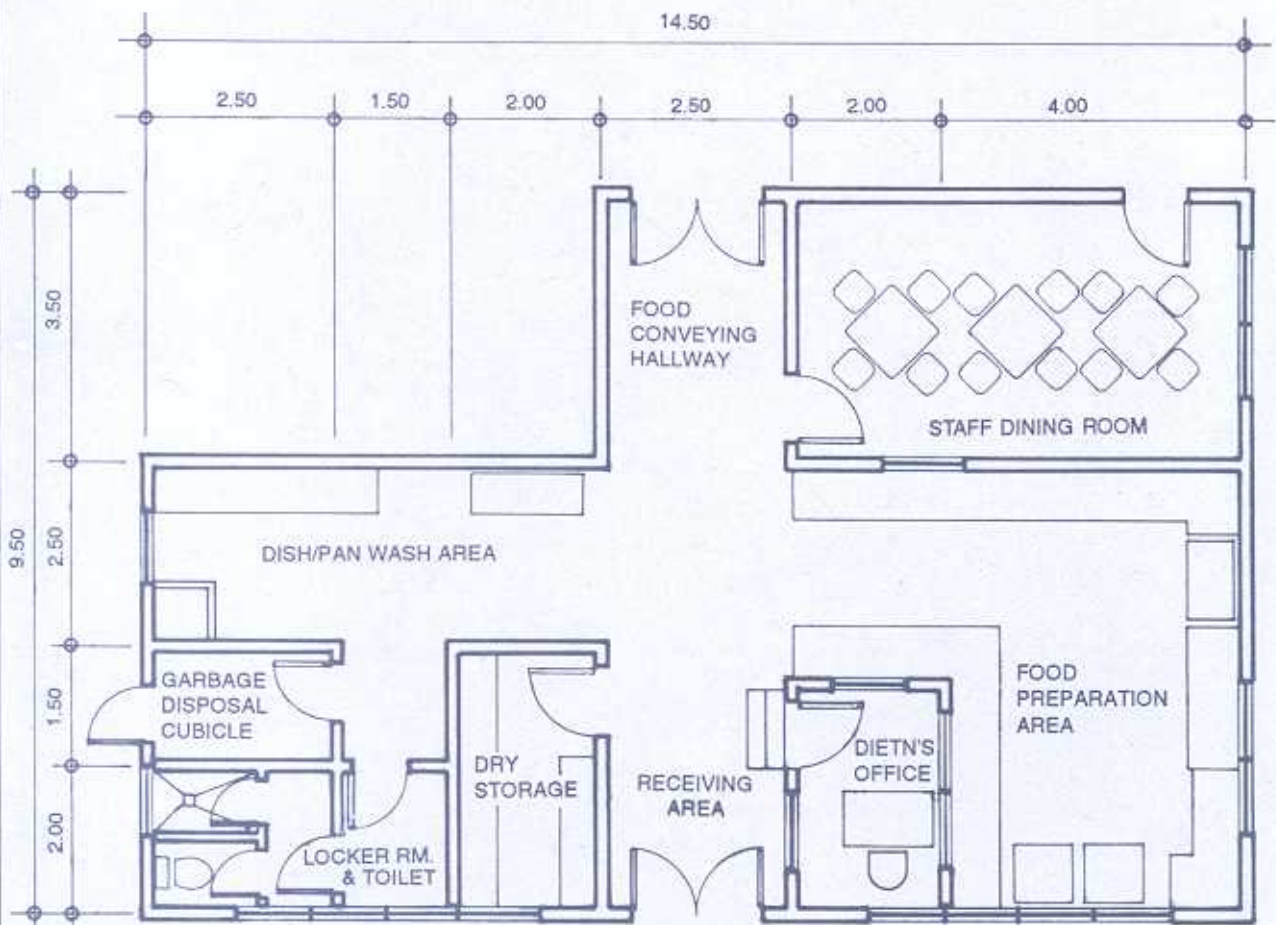
  

FUNCTIONAL DESIGN REQUIREMENTS:			
<p>This activity space provides facilities needed for the following activities:</p> <ul style="list-style-type: none"> <li>a. Food Service Workers prepare food (i.e wash and peel vegetables, slice and cut meat and fish, segregate foodstuff)</li> <li>b. Cooking/Baking of food.</li> <li>c. Food Service Workers set-up and assemble cooked food for pay patients and charity patients.</li> <li>d. Dietitian puts tags on prepared trays for pay patients.</li> <li>e. Food Service Workers place food trays and containers on food conveyors to be taken to the wards.</li> </ul> <p>People Involved:</p> <ul style="list-style-type: none"> <li>1 x Dietitian</li> <li>1 x Cook</li> <li>2 x Food Service Workers</li> </ul> <p>Planning Relationships:</p> <ul style="list-style-type: none"> <li>a. Adjacent to Staff Dining Room.</li> <li>b. Adjacent to Dietitian's Office.</li> </ul>	<p>EQUIPMENT AND ACCESSORY CHECKLIST</p> <p>Freezer Refrigerator Range hood Range, oven below</p>	<p>QUANTITY</p> <p>1 1 1 1</p>	<p>REMARKS</p>
	<p>FURNITURE AND FIXTURE CHECKLIST</p> <p>Preparation table, 762x2000 with two drawers and undershelf Counter, 850mm high with cabinets below Counter with open shelves below Counter for tray assembly Sink (610x610x357) and drain board in counter with cabinets below</p>	<p>QUANTITY</p> <p>1</p>	<p>REMARKS</p>
	<p>ADDITIONAL EQUIPMENT AND ENGINEERING TERMINALS</p> <p>Rail, curtain, window Outlet, intercom Outlet, 10A, 2P, 240V, duplex Outlet, 15A, 2P, 240V, single</p>	<p>QUANTITY</p> <p>3 1 8 1</p>	<p>REMARKS</p> <p>grounding type, parallel slots grounding type, tandem slots</p>

Hospital: Secondary, 25-Bed	DEPARTMENT DATA SHEET	Department of Health HEALTH INFRASTRUCTURE SERVICE
Updated Reference: June 1994	Department: DIETARY	Reference Sheet Number: 25B-DI-DDS1

LAYOUT PER DEPARTMENT SHOWING ROOMS AND SPACE COMPONENTS:

Scale 1:100 mts.



Hospital: Secondary, 25-Bed	ROOM DATA SHEET		Department of Health HEALTH INFRASTRUCTURE SERVICE
Updated Reference: June 1994	Department: RADIOLOGY	Room Title: OFFICE AND VIEWING ROOM	Reference Sheet Number: 25B-AN-RDS1.4C
TECHNICAL DESIGN DATA:		LAYOUT OF ROOM AND SPACE COMPONENTS:	
DIRECT SERVICES	DESIGN DATA	<p>Scale 1:100 mts.</p>	
Disposal	hospital waste category: A		
Hot water	NA		
Cold water	NA		
Drainage	NA		
Gas	NA		
Compressed air	NA		
Steam	NA		
Others			
DIRECT DEMANDS ON FLOOR AND WALL			
Loading	NA		
Spillage	NA		
Foot traffic	LIGHT : medium : heavy		
Wheel traffic	NA		
Impacts	NA		
Abrasion	NA		
Easy maintenance	essential:DESIRABLE:unnecessary		
Vibration free	ESSENTIAL:desirable:unnecessary		
Door sets	ordinary access door	<p>Key</p> <p>1 Negatoscope with counter      5 Typewriter table, 400x800</p> <p>2 Executive desk, 750x1500      6 Chair, upright, stacking</p> <p>3 Steel filing cabinet, 500x700      7 Counter with grills</p> <p>4 Executive chair      8 Wall cabinet</p>	
		SPACE DEMANDS (Total Minimum Space Required in sq.m.) : 13.50	
		Space Components	Minimum Space Required/Component
Windows	clear, privacy control		
		REGULATIONS AND NOTES:	
Internal glazing	nil		

Hospital: Secondary, 25-Bed	R O O M   D A T A   S H E E T		Department of Health HEALTH INFRASTRUCTURE SERVICE
Updated Reference: June 1994	Department: RADIOLOGY	Room Title: FILM FILE AND STORAGE ROOM	Reference Sheet Number: 25B-AN-RDS1.5A
FUNCTIONAL DESIGN REQUIREMENTS:			
<p>This activity space provides facilities needed for the following activities:</p> <ul style="list-style-type: none"> <li>a. X-ray Technician/Technologist files radiographs of five years duration.</li> <li>b. X-ray Technician/Technologist retrieves films on file for follow-up of patients condition.</li> </ul> <p>NOTE : Radiographs stored beyond five years of age must be placed in the Central Records.</p> <p>People Involved:</p> <p style="padding-left: 40px;">X-ray Section Staffmembers</p> <p>Planning Relationships:</p> <ul style="list-style-type: none"> <li>a. Close to Office and Viewing Room.</li> </ul>	EQUIPMENT AND ACCESSORY CHECKLIST	QUANTITY	REMARKS
	FURNITURE AND FIXTURE CHECKLIST	QUANTITY	REMARKS
	Aluminum or wooden movable ladder Open shelves	1	step-ladder height = 2.00 mts 7 shelves
ADDITIONAL EQUIPMENT AND ENGINEERING TERMINALS	QUANTITY	REMARKS	
Outlet, 10A, 2P, 240V	7	grounding type, parallel slots	
Smoke detector	1		
Ceiling fan	1		

Hospital: Secondary, 25-Bed	ROOM DATA SHEET		Department of Health HEALTH INFRASTRUCTURE SERVICE
Updated Reference: June 1994	Department: LABORATORY	Room Title: LABORATORY	Reference Sheet Number: 25B-AN-RDS2.1A

FUNCTIONAL DESIGN REQUIREMENTS:																																																			
<p>This activity space provides facilities needed for the following activities:</p> <ul style="list-style-type: none"> <li>a. Performance of clinical pathology tests such as: <ul style="list-style-type: none"> <li>- Clinical microscopy, routine urinalysis, special urinalysis, routine fecalysis, gramstain, acid fast stain, KOH mount for fungi.</li> <li>- Hematology (routine hematology)</li> <li>- Microbiology</li> </ul> </li> <li>b. Environmental health ("PHC Medium").</li> <li>c. Clinical handwashing.</li> <li>d. Specimen collection.</li> <li>e. Blood collection, blood typing and cross matching</li> <li>f. Donor screening.</li> <li>g. Glassware washing.</li> </ul> <p>People Involved:</p> <p>1 x Medical Technologist 1 x Physician</p> <p>Planning Relationships:</p> <ul style="list-style-type: none"> <li>a. Close to Emergency Department.</li> <li>b. Close to Outpatient Department.</li> <li>c. Close to Toilets.</li> <li>d. Close to Wards.</li> </ul>	<p>EQUIPMENT AND ACCESSORY CHECKLIST</p> <table border="1"> <tr> <th></th> <th>QUANTITY</th> <th>REMARKS</th> </tr> <tr><td>Timer</td><td>1</td><td></td></tr> <tr><td>Microscope</td><td>1</td><td></td></tr> <tr><td>Urinometer</td><td>1</td><td></td></tr> <tr><td>Electric stove</td><td>1</td><td></td></tr> <tr><td>Burner</td><td>1</td><td></td></tr> <tr><td>Hemoglobinometer</td><td>1</td><td></td></tr> <tr><td>Tally counter</td><td>1</td><td></td></tr> <tr><td>Hemocytometer</td><td>1</td><td></td></tr> <tr><td>Microhematocrit centrifuge</td><td>1</td><td></td></tr> <tr><td>Spectrophotometer</td><td>1</td><td></td></tr> <tr><td>Water bath</td><td>1</td><td></td></tr> <tr><td>Manual centrifuge</td><td>1</td><td></td></tr> <tr><td>Refrigerator, 8 cu. ft.</td><td>1</td><td></td></tr> <tr><td>Waste receptacle</td><td>1</td><td></td></tr> <tr><td>Waste paper receptacle</td><td>1</td><td></td></tr> </table>		QUANTITY	REMARKS	Timer	1		Microscope	1		Urinometer	1		Electric stove	1		Burner	1		Hemoglobinometer	1		Tally counter	1		Hemocytometer	1		Microhematocrit centrifuge	1		Spectrophotometer	1		Water bath	1		Manual centrifuge	1		Refrigerator, 8 cu. ft.	1		Waste receptacle	1		Waste paper receptacle	1			
		QUANTITY	REMARKS																																																
	Timer	1																																																	
	Microscope	1																																																	
Urinometer	1																																																		
Electric stove	1																																																		
Burner	1																																																		
Hemoglobinometer	1																																																		
Tally counter	1																																																		
Hemocytometer	1																																																		
Microhematocrit centrifuge	1																																																		
Spectrophotometer	1																																																		
Water bath	1																																																		
Manual centrifuge	1																																																		
Refrigerator, 8 cu. ft.	1																																																		
Waste receptacle	1																																																		
Waste paper receptacle	1																																																		
	<p>FURNITURE AND FIXTURE CHECKLIST</p> <table border="1"> <tr> <th></th> <th>QUANTITY</th> <th>REMARKS</th> </tr> <tr><td>Desk, 750x1200</td><td>1</td><td></td></tr> <tr><td>Steel filing Cabinet, 500x700</td><td>1</td><td></td></tr> <tr><td>Microscope table, 750 high with cabinets and drawers below</td><td>1</td><td></td></tr> <tr><td>Counter, cabinet &amp; shelves below</td><td>1</td><td></td></tr> <tr><td>Acid resisting counter, 900 high</td><td>1</td><td></td></tr> <tr><td>Wall cabinets</td><td>1</td><td></td></tr> <tr><td>Bookshelves</td><td>1</td><td></td></tr> <tr><td>Table, 750x1370</td><td>1</td><td></td></tr> <tr><td>Chair, upright, stacking</td><td>1</td><td></td></tr> <tr><td>Stool</td><td>1</td><td></td></tr> <tr><td>Acid resisting sink with goose-neck spout and hand-held spray</td><td>1</td><td></td></tr> </table>		QUANTITY	REMARKS	Desk, 750x1200	1		Steel filing Cabinet, 500x700	1		Microscope table, 750 high with cabinets and drawers below	1		Counter, cabinet & shelves below	1		Acid resisting counter, 900 high	1		Wall cabinets	1		Bookshelves	1		Table, 750x1370	1		Chair, upright, stacking	1		Stool	1		Acid resisting sink with goose-neck spout and hand-held spray	1															
	QUANTITY	REMARKS																																																	
Desk, 750x1200	1																																																		
Steel filing Cabinet, 500x700	1																																																		
Microscope table, 750 high with cabinets and drawers below	1																																																		
Counter, cabinet & shelves below	1																																																		
Acid resisting counter, 900 high	1																																																		
Wall cabinets	1																																																		
Bookshelves	1																																																		
Table, 750x1370	1																																																		
Chair, upright, stacking	1																																																		
Stool	1																																																		
Acid resisting sink with goose-neck spout and hand-held spray	1																																																		
	<p>ADDITIONAL EQUIPMENT AND ENGINEERING TERMINALS</p> <table border="1"> <tr> <th></th> <th>QUANTITY</th> <th>REMARKS</th> </tr> <tr><td>Rail, curtain, window</td><td>2</td><td></td></tr> <tr><td>Outlet, intercom</td><td>1</td><td></td></tr> <tr><td>Outlet, 10A, 2P, 240V</td><td>9</td><td>grounding type, parallel slots</td></tr> <tr><td>Outlet, 15A, 2P, 240V</td><td>3</td><td>grounding type, tandem slots</td></tr> <tr><td>Smoke detector</td><td>1</td><td></td></tr> </table>		QUANTITY	REMARKS	Rail, curtain, window	2		Outlet, intercom	1		Outlet, 10A, 2P, 240V	9	grounding type, parallel slots	Outlet, 15A, 2P, 240V	3	grounding type, tandem slots	Smoke detector	1																																	
	QUANTITY	REMARKS																																																	
Rail, curtain, window	2																																																		
Outlet, intercom	1																																																		
Outlet, 10A, 2P, 240V	9	grounding type, parallel slots																																																	
Outlet, 15A, 2P, 240V	3	grounding type, tandem slots																																																	
Smoke detector	1																																																		

Hospital: Secondary, 25-Bed	ROOM DATA SHEET		Department of Health HEALTH INFRASTRUCTURE SERVICE
Updated Reference: June 1994	Department: LABORATORY	Room Title: LABORATORY	Reference Sheet Number: 25B-AN-RDS2.1C
TECHNICAL DESIGN DATA:		LAYOUT OF ROOM AND SPACE COMPONENTS:	
DIRECT SERVICES	DESIGN DATA	<p>Scale 1:100 mts.</p>	
Disposal	hospital waste category: A,D,G,H		
Hot water	required at sink		
Cold water	required at sink		
Drainage	required at sink and floor		
Gas	2 outlets required (non-medical)		
Compressed air	2 outlets required (non-medical)		
Steam	NA		
Others			
DIRECT DEMANDS ON FLOOR AND WALL			
Loading	NA		
Spillage	slight : occasional : FREQUENT		
Foot traffic	light : MEDIUM : heavy		
Wheel traffic	light : MEDIUM : heavy		
Impacts	NA		
Abrasion	NA		
Easy maintenance	ESSENTIAL:desirable:unnecessary		
Vibration free	ESSENTIAL:desirable:unnecessary		
Door sets	ordinary access door		
Windows	clear with solar control	SPACE DEMANDS (Total Minimum Space Required in sq.m.) : 36.00	
Internal glazing	nil	REGULATIONS AND NOTES: Sink should be provided with hand held spray device to act as eye bath.	

Hospital: Secondary, 25-Bed	ROOM DATA SHEET		Department of Health HEALTH INFRASTRUCTURE SERVICE
Updated Reference: June 1994	Department: OUTPATIENT	Room Title: WAITING AREA	Reference Sheet Number: 25B-AN-RDS4.1B
TECHNICAL DESIGN DATA:			
ENVIRONMENTAL CONDITIONS	DESIGN DATA	ENVIRONMENTAL CONDITIONS	DESIGN DATA
AIR		LIGHTING AND VISUAL	
Outdoor air temperature (deg. C)	ave. local station temp. reading	General illumination (LUX)	150
Room Temperature (deg. C)	atmospheric	Night illumination (LUX)	NA
Mechanical ventilation:		Task illumination (LUX)	NA
Volume (cu.m./hr.-person)	12.75	Colour rendering	essential:desirable:UNNECESSARY
Velocity (m./hr.)	900	Standby light	essential:DESIRABLE:unnecessary
Pressure:		Emergency light	essential:DESIRABLE:unnecessary
Exhaust (psi)	NA	Daylight	essential:DESIRABLE:unnecessary
Inlet (psi)	NA	View out	essential:DESIRABLE:unnecessary
% Dust filtration	NA	Privacy	essential:desirable:UNNECESSARY
Humidity (% RH)	NA	Black out	essential:desirable:UNNECESSARY
Cooling load (TR)	NA		
SOUND		SAFETY	
Acceptable sound level (db)	60	Accessible hot surface:	NA
Speech privacy	essential:desirable:UNNECESSARY	Maximum temperature (deg. C)	NA
Quality which cannot be	tonal impact	Domestic hot water:	NA
tolerated		Maximum temperature (deg. C)	NA
		Access limit	general public
		Fire risk	LOW : medium : high
		Other risks	NA

Hospital: Secondary, 25-Bed	ROOM DATA SHEET		Department of Health HEALTH INFRASTRUCTURE SERVICE
Updated Reference: June 1994	Department: OUTPATIENT	Room Title: ADMITTING/INFO COUNTER & RECORDS	Reference Sheet Number: 25B-AN-RDS4.2B
TECHNICAL DESIGN DATA:			
ENVIRONMENTAL CONDITIONS	DESIGN DATA	ENVIRONMENTAL CONDITIONS	DESIGN DATA
AIR		LIGHTING AND VISUAL	
Outdoor air temperature (deg. C)	ave. local station temp. reading	General illumination (LUX)	500
Room Temperature (deg. C)	atmospheric	Night illumination (LUX)	NA
Mechanical ventilation:		Task illumination (LUX)	NA
Volume (cu.m./hr.-person)	12.75	Colour rendering	essential:DESIRABLE:unnecessary
Velocity (m./hr.)	900	Standby light	ESSENTIAL:desirable:unnecessary
Pressure:		Emergency light	essential:DESIRABLE:unnecessary
Exhaust (psi)	NA	Daylight	essential:DESIRABLE:unnecessary
Inlet (psi)	NA	View out	essential:DESIRABLE:unnecessary
% Dust filtration	NA	Privacy	essential:desirable:UNNECESSARY
Humidity (% RH)	NA	Black out	essential:desirable:UNNECESSARY
Cooling load (TR)	NA		
SOUND		SAFETY	
Acceptable sound level (db)	60	Accessible hot surface:	NA
Speech privacy	essential:DESIRABLE:unnecessary	Maximum temperature (deg. C)	NA
Quality which cannot be	tonal impact	Domestic hot water:	NA
tolerated		Maximum temperature (deg. C)	NA
		Access limit	hospital staff
		Fire risk	LOW : medium : high
		Other risks	NA

Hospital: Secondary, 25-Bed	ROOM DATA SHEET		Department of Health HEALTH INFRASTRUCTURE SERVICE
Updated Reference: June 1994	Department: OUTPATIENT	Room Title: TOILET FACILITIES	Reference Sheet Number: 25B-AN-RDS4.7B
TECHNICAL DESIGN DATA:			
ENVIRONMENTAL CONDITIONS	DESIGN DATA	ENVIRONMENTAL CONDITIONS	DESIGN DATA
AIR		LIGHTING AND VISUAL	
Outdoor air temperature (deg. C)	ave. local station temp. reading	General illumination (LUX)	150
Room Temperature (deg. C)	atmospheric	Night illumination (LUX)	NA
Mechanical ventilation:		Task illumination (LUX)	NA
Volume (cu.m./hr.-person)	NA	Colour rendering	essential;desirable;UNNECESSARY
Velocity (m./hr.)	NA	Standby light	essential;DESIRABLE;unnecessary
Pressure:		Emergency light	essential;desirable;UNNECESSARY
Exhaust (psi)	NA	Daylight	essential;DESIRABLE;unnecessary
Inlet (psi)	NA	View out	essential;desirable;UNNECESSARY
% Dust filtration	NA	Privacy	ESSENTIAL;desirable;unnecessary
Humidity (% RH)	NA	Black out	essential;desirable;UNNECESSARY
Cooling load (TR)	NA		
SOUND		SAFETY	
Acceptable sound level (db)	60	Accessible hot surface:	NA
Speech privacy	essential;desirable;UNNECESSARY	Maximum temperature (deg. C)	NA
Quality which cannot be	NA	Domestic hot water:	NA
tolerated		Maximum temperature (deg. C)	NA
		Access limit	general public
		Fire risk	LOW : medium : high
		Other risks	NA

Hospital: Secondary, 25-Bed	ROOM DATA SHEET		Department of Health HEALTH INFRASTRUCTURE SERVICE
Updated Reference: June 1994	Department: OUTPATIENT	Room Title: TREATMENT ROOM (PEDIA/UNDER FIVE)	Reference Sheet Number: 25B-AN-RDS4.3A
FUNCTIONAL DESIGN REQUIREMENTS:			
<p>This activity space provides facilities needed for the following activities:</p> <ul style="list-style-type: none"> <li>a. Patient may arrive on foot.</li> <li>b. Patient may arrive in a wheelchair.</li> <li>c. Patient is transferred from a wheelchair to examining table and vice versa.</li> <li>d. Patient assessment, diagnosis and treatment.</li> <li>e. Clinical handwashing.</li> <li>f. Use of monitoring/diagnostic equipment.</li> <li>g. Medical, surgical, nursing, and first-aid activities.</li> </ul>	EQUIPMENT AND ACCESSORY CHECKLIST	QUANTITY	REMARKS
	Examining light Infant weighing scale Adult weighing scale Sphygmomanometer Paper towel dispenser Stethoscope Diagnostic set Instrument tray Speculum Sterilizer Waste receptacle	1 1 1 1 1 1 1 1 1 1 1	with height meter
	FURNITURE AND FIXTURE CHECKLIST	QUANTITY	REMARKS
	Swivel chair Footstool Adjustable stool Desk, 600x1200 Chair, upright, stacking Counter, 900mm high, cabinets and drawers below Counter, open below Table, 400x500 Examining table Lavatory with gooseneck spout and knee control	1 1 1 1 1 1 1 1 1 1	
<p>People Involved</p> <ul style="list-style-type: none"> <li>1 x Resident Physician</li> <li>1 x Nurse</li> <li>1 x Nursing Attendant</li> <li>Patient</li> </ul>			
<p>Planning Relationships:</p> <ul style="list-style-type: none"> <li>a. Close to other Ancillary Service.</li> <li>b. Adjacent to other Treatment Rooms.</li> </ul>			
<p>This activity space provides facilities needed for the delivery of General Patient Care.</p>	ADDITIONAL EQUIPMENT AND ENGINEERING TERMINALS	QUANTITY	REMARKS
	Rail, curtain, window Rail, curtain, cubicle Outlet, intercom Outlet, 10A, 2P, 240V, duplex Outlet, 15A, 2P, 240V, single Smoke detector	1 2 1 6 1 1	grounding type, parallel slots grounding type, tandem slots

Hospital: Secondary, 25-Bed	ROOM DATA SHEET		Department of Health HEALTH INFRASTRUCTURE SERVICE
Updated Reference: June 1994	Department: OUTPATIENT	Room Title: TREATMENT ROOM (PEDIA/UNDER FIVE)	Reference Sheet Number: 25B-AN-RDS4.3B
TECHNICAL DESIGN DATA:			
ENVIRONMENTAL CONDITIONS	DESIGN DATA	ENVIRONMENTAL CONDITIONS	DESIGN DATA
AIR		LIGHTING AND VISUAL	
Outdoor air temperature (deg. C)	ave. local station temp. reading	General illumination (LUX)	250-500
Room Temperature (deg. C)	25	Night illumination (LUX)	NA
Mechanical ventilation:		Task illumination (LUX)	1000
Volume (cu m./hr./person)	12.75	Colour rendering	ESSENTIAL:desirable:unnecessary
Velocity (m./hr.)	900	Standby light	ESSENTIAL:desirable:unnecessary
Pressure:		Emergency light	ESSENTIAL:desirable:unnecessary
Exhaust (psi)	NA	Daylight	essential:desirable:UNNECESSARY
Inlet (psi)	NA	View out	essential:DESIRABLE:unnecessary
% Dust filtration	93% - 99% @ 1 micron	Privacy	essential:DESIRABLE:unnecessary
Humidity (% RH)	50	Black out	essential:desirable:UNNECESSARY
Cooling load (TR)	1.2		
SOUND		SAFETY	
Acceptable sound level (db)	50	Accessible hot surface:	NA
Speech privacy	ESSENTIAL:desirable:unnecessary	Maximum temperature (deg. C)	NA
Quality which cannot be	tonal impact	Domestic hot water:	at lavatory
tolerated		Maximum temperature (deg. C)	70
		Access limit	medical staff and patient
		Fire risk	LOW : medium : high
		Other risks	NA

Hospital: Secondary, 25-Bed	ROOM DATA SHEET		Department of Health HEALTH INFRASTRUCTURE SERVICE
Updated Reference: June 1994	Department: OUTPATIENT	Room Title: TREATMENT ROOM (MEDICAL/SURGICAL)	Reference Sheet Number: 25B-AN-RDS4.4B
TECHNICAL DESIGN DATA:			
ENVIRONMENTAL CONDITIONS	DESIGN DATA	ENVIRONMENTAL CONDITIONS	DESIGN DATA
AIR		LIGHTING AND VISUAL	
Outdoor air temperature (deg. C)	ave. local station temp. reading	General illumination (LUX)	250-500
Room Temperature (deg. C)	25	Night illumination (LUX)	NA
Mechanical ventilation:		Task illumination (LUX)	1000
Volume (cu.m./hr.-person)	12.75	Colour rendering	ESSENTIAL:desirable:unnecessary
Velocity (m./hr.)	900	Standby light	ESSENTIAL:desirable:unnecessary
Pressure:		Emergency light	ESSENTIAL:desirable:unnecessary
Exhaust (psi)	NA	Daylight	essential:desirable:UNNECESSARY
Inlet (psi)	NA	View out	essential:DESIRABLE:unnecessary
% Dust filtration	93% - 99% @ 1 micron	Privacy	ESSENTIAL:desirable:unnecessary
Humidity (% RH)	50	Black out	essential:desirable:UNNECESSARY
Cooling load (TR)	1.2		
SOUND		SAFETY	
Acceptable sound level (db)	50	Accessible hot surface:	NA
Speech privacy	ESSENTIAL:desirable:unnecessary	Maximum temperature (deg. C)	NA
Quality which cannot be	tonal impact	Domestic hot water:	at lavatory
tolerated		Maximum temperature (deg. C)	70
		Access limit	medical staff and patient
		Fire risk	LOW : medium : high
		Other risks	NA

Hospital: Secondary, 25-Bed	ROOM DATA SHEET		Department of Health HEALTH INFRASTRUCTURE SERVICE																					
Updated Reference: June 1994	Department: OUTPATIENT	Room Title: TREATMENT ROOM (OB-GYN/FAMILY PLANNING)	Reference Sheet Number: 25B-AN-RDS4.5A																					
FUNCTIONAL DESIGN REQUIREMENTS:																								
<p>This activity space provides facilities needed for the following activities:</p> <ul style="list-style-type: none"> <li>a. Patient may arrive on foot.</li> <li>b. Patient may arrive in a wheelchair.</li> <li>c. Patient is transferred from a wheelchair to examining table and vice versa.</li> <li>d. Clinical handwashing.</li> <li>e. Use of monitoring/diagnostic equipment.</li> <li>f. Medical, surgical, nursing, and first-aid activities.</li> <li>g. Family planning counseling and motivation.</li> <li>h. Issuance of contraceptives.</li> <li>i. Insertion and removal of IUD.</li> </ul> <p>People Involved:</p> <ul style="list-style-type: none"> <li>1 x Resident Physician</li> <li>1 x Nurse</li> <li>1 x Nursing Attendant</li> <li>Patient</li> </ul> <p>Planning Relationships:</p> <ul style="list-style-type: none"> <li>a. Close to other Ancillary Service.</li> <li>b. Adjacent to other Treatment Rooms.</li> </ul> <p>This activity space provides facilities needed for the delivery of General Patient Care.</p>	<p>EQUIPMENT AND ACCESSORY CHECKLIST</p> <table border="1"> <tr> <td>Examining light</td> <td>1</td> <td rowspan="10">with height meter</td> </tr> <tr> <td>Adult weighing scale</td> <td>1</td> </tr> <tr> <td>Sphygmomanometer</td> <td>1</td> </tr> <tr> <td>Paper towel dispenser</td> <td>1</td> </tr> <tr> <td>Stethoscope</td> <td>1</td> </tr> <tr> <td>Diagnostic set</td> <td>1</td> </tr> <tr> <td>Instrument tray</td> <td>1</td> </tr> <tr> <td>Speculum</td> <td>1</td> </tr> <tr> <td>Waste receptacle</td> <td>1</td> </tr> <tr> <td>Sterilizer</td> <td>1</td> </tr> </table>	Examining light	1	with height meter	Adult weighing scale	1	Sphygmomanometer	1	Paper towel dispenser	1	Stethoscope	1	Diagnostic set	1	Instrument tray	1	Speculum	1	Waste receptacle	1	Sterilizer	1	QUANTITY	REMARKS
	Examining light	1	with height meter																					
	Adult weighing scale	1																						
	Sphygmomanometer	1																						
	Paper towel dispenser	1																						
Stethoscope	1																							
Diagnostic set	1																							
Instrument tray	1																							
Speculum	1																							
Waste receptacle	1																							
Sterilizer	1																							
<p>FURNITURE AND FIXTURE CHECKLIST</p> <table border="1"> <tr> <td>Swivel chair</td> <td>1</td> <td rowspan="11"></td> </tr> <tr> <td>Footstool</td> <td>1</td> </tr> <tr> <td>Adjustable Stool</td> <td>1</td> </tr> <tr> <td>Desk, 600x1200</td> <td>2</td> </tr> <tr> <td>Chair, upright, stacking</td> <td>7</td> </tr> <tr> <td>Counter, 900mm high, cabinets and drawers below</td> <td>1</td> </tr> <tr> <td>Counter, open below</td> <td>1</td> </tr> <tr> <td>Table, 400x500</td> <td>1</td> </tr> <tr> <td>Examining table</td> <td>1</td> </tr> <tr> <td>Lavatory with gooseneck spout and knee control</td> <td>1</td> </tr> </table>	Swivel chair	1		Footstool	1	Adjustable Stool	1	Desk, 600x1200	2	Chair, upright, stacking	7	Counter, 900mm high, cabinets and drawers below	1	Counter, open below	1	Table, 400x500	1	Examining table	1	Lavatory with gooseneck spout and knee control	1	QUANTITY	REMARKS	
Swivel chair	1																							
Footstool	1																							
Adjustable Stool	1																							
Desk, 600x1200	2																							
Chair, upright, stacking	7																							
Counter, 900mm high, cabinets and drawers below	1																							
Counter, open below	1																							
Table, 400x500	1																							
Examining table	1																							
Lavatory with gooseneck spout and knee control	1																							
<p>ADDITIONAL EQUIPMENT AND ENGINEERING TERMINALS</p> <table border="1"> <tr> <td>Rail, curtain, window</td> <td>1</td> <td rowspan="6">grounding type: parallel slots grounding type: tandem slots</td> </tr> <tr> <td>Rail, curtain, cubicle</td> <td>2</td> </tr> <tr> <td>Outlet, intercom</td> <td>1</td> </tr> <tr> <td>Outlet, 10A, 2P, 240V, duplex</td> <td>6</td> </tr> <tr> <td>Outlet, 15A, 2P, 240V, single</td> <td>1</td> </tr> <tr> <td>Smoke detector</td> <td>1</td> </tr> </table>	Rail, curtain, window		1	grounding type: parallel slots grounding type: tandem slots	Rail, curtain, cubicle	2	Outlet, intercom	1	Outlet, 10A, 2P, 240V, duplex	6	Outlet, 15A, 2P, 240V, single	1	Smoke detector	1	QUANTITY	REMARKS								
Rail, curtain, window	1	grounding type: parallel slots grounding type: tandem slots																						
Rail, curtain, cubicle	2																							
Outlet, intercom	1																							
Outlet, 10A, 2P, 240V, duplex	6																							
Outlet, 15A, 2P, 240V, single	1																							
Smoke detector	1																							

Hospital: Secondary, 25-Bed	ROOM DATA SHEET		Department of Health HEALTH INFRASTRUCTURE SERVICE
Updated Reference: June 1994	Department: OUTPATIENT	Room Title: TREATMENT ROOM (OB-GYN/FAMILY PLANNING)	Reference Sheet Number: 25B-AN-RDS4 5B
TECHNICAL DESIGN DATA:			
ENVIRONMENTAL CONDITIONS	DESIGN DATA	ENVIRONMENTAL CONDITIONS	DESIGN DATA
AIR		LIGHTING AND VISUAL	
Outdoor air temperature (deg. C)	ave. local station temp. reading	General illumination (LUX)	250-500
Room Temperature (deg. C)	25	Night illumination (LUX)	NA
Mechanical ventilation:		Task illumination (LUX)	1000
Volume (cu.m./hr.-person)	12.75	Colour rendering	ESSENTIAL:desirable:unnecessary
Velocity (m./hr.)	900	Standby light	ESSENTIAL:desirable:unnecessary
Pressure:		Emergency light	ESSENTIAL:desirable:unnecessary
Exhaust (psi)	NA	Daylight	essential:desirable:UNNECESSARY
Inlet (psi)	NA	View out	essential:DESIRABLE:unnecessary
% Dust filtration	93% - 99% @ 1 micron	Privacy	ESSENTIAL:desirable:unnecessary
Humidity (% RH)	50	Black out	essential:desirable:UNNECESSARY
Cooling load (TR)	1.2		
SOUND		SAFETY	
Acceptable sound level (db)	50	Accessible hot surface:	NA
Speech privacy	ESSENTIAL:desirable:unnecessary	Maximum temperature (deg. C)	NA
Quality which cannot be tolerated	tonal impact	Domestic hot water:	at lavatory
		Maximum temperature (deg. C)	70
		Access limit	medical staff and patient
		Fire risk	LOW : medium : high
		Other risks	NA

Hospital: Secondary, 25-Bed	ROOM DATA SHEET		Department of Health HEALTH INFRASTRUCTURE SERVICE																		
Updated Reference: June 1994	Department: OUTPATIENT	Room Title: TREATMENT ROOM (PEDIA/UNDER FIVE)	Reference Sheet Number: 25B-AN-RDS4.3C																		
TECHNICAL DESIGN DATA:		LAYOUT OF ROOM AND SPACE COMPONENTS:																			
DIRECT SERVICES	DESIGN DATA	<p>Scale 1:100 mts.</p>																			
Disposal	hospital waste category: A,B,E,F																				
Hot water	required at lavatory																				
Cold water	required at lavatory																				
Drainage	required at lavatory																				
Gas	NA																				
Compressed air	NA																				
Steam	NA																				
Others	NA																				
DIRECT DEMANDS ON FLOOR AND WALL																					
Loading	NA																				
Spillage	SLIGHT : occasional : frequent																				
Foot traffic	LIGHT : medium : heavy																				
Wheel traffic	LIGHT : medium : heavy																				
Impacts	NA																				
Abrasion	NA																				
Easy maintenance	ESSENTIAL: desirable: unnecessary																				
Vibration free	ESSENTIAL: desirable: unnecessary																				
Door sets	wheelchair access																				
		<p>Key</p> <table> <tr> <td>1 Table, 400x500</td> <td>10 Cubicle curtain and rod</td> </tr> <tr> <td>2 Examining table</td> <td>11 Desk, 600x1200</td> </tr> <tr> <td>3 Footstool</td> <td>12 Chair, upright, stacking</td> </tr> <tr> <td>4 Paper towel dispenser</td> <td>13 Counter, 900mm high, cabinets and drawers below</td> </tr> <tr> <td>5 Examining light</td> <td>14 Counter, open below</td> </tr> <tr> <td>6 Adjustable stool</td> <td>15 Sterilizer</td> </tr> <tr> <td>7 Adult weighing scale</td> <td>16 Instrument tray</td> </tr> <tr> <td>8 Waste receptacle</td> <td>17 Swivel chair</td> </tr> <tr> <td>9 Lavatory with gooseneck spout and knee control</td> <td>18 Infant weighing scale</td> </tr> </table>		1 Table, 400x500	10 Cubicle curtain and rod	2 Examining table	11 Desk, 600x1200	3 Footstool	12 Chair, upright, stacking	4 Paper towel dispenser	13 Counter, 900mm high, cabinets and drawers below	5 Examining light	14 Counter, open below	6 Adjustable stool	15 Sterilizer	7 Adult weighing scale	16 Instrument tray	8 Waste receptacle	17 Swivel chair	9 Lavatory with gooseneck spout and knee control	18 Infant weighing scale
1 Table, 400x500	10 Cubicle curtain and rod																				
2 Examining table	11 Desk, 600x1200																				
3 Footstool	12 Chair, upright, stacking																				
4 Paper towel dispenser	13 Counter, 900mm high, cabinets and drawers below																				
5 Examining light	14 Counter, open below																				
6 Adjustable stool	15 Sterilizer																				
7 Adult weighing scale	16 Instrument tray																				
8 Waste receptacle	17 Swivel chair																				
9 Lavatory with gooseneck spout and knee control	18 Infant weighing scale																				
		SPACE DEMANDS (Total Minimum Space Required in sq.m.) : 18.00																			
Windows	clear, solar control, privacy control	Space Components	Minimum Space Required/Component																		
	trol																				
Internal glazing	nil	REGULATIONS AND NOTES:																			

Hospital: Secondary, 25-Bed	ROOM DATA SHEET		Department of Health HEALTH INFRASTRUCTURE SERVICE				
Updated Reference: June 1994	Department: OUTPATIENT	Room Title: TREATMENT ROOM (OB-GYN/FAMILY PLANNING)	Reference Sheet Number: 25B-AN-RDS4.5C				
TECHNICAL DESIGN DATA:		LAYOUT OF ROOM AND SPACE COMPONENTS:					
DIRECT SERVICES	DESIGN DATA						
Disposal	hospital waste category: A,B,E,F						
Hot water	required at lavatory						
Cold water	required at lavatory						
Drainage	required at lavatory						
Gas	NA						
Compressed air	NA						
Steam	NA						
Others	NA						
DIRECT DEMANDS ON FLOOR AND WALL							
Loading	NA						
Spillage	SUGHT : occasional : frequent						
Foot traffic	LIGHT : medium : heavy						
Wheel traffic	LIGHT : medium : heavy						
Impacts	NA						
Abrasion	NA						
Easy maintenance	ESSENTIAL:desirable:unnecessary						
Vibration free	ESSENTIAL:desirable:unnecessary						
Door sets	wheelchair access						
Windows	clear, solar control, privacy con-						
Internal glazing	nil						
SPACE DEMANDS (Total Minimum Space Required in sq.m) : 18.00		<table border="1"> <tr> <th>Space Components</th> <th>Minimum Space Required/Component</th> </tr> <tr> <td> </td> <td> </td> </tr> </table>		Space Components	Minimum Space Required/Component		
Space Components	Minimum Space Required/Component						
REGULATIONS AND NOTES:							

Hospital: Secondary, 25-Bed	ROOM DATA SHEET		Department of Health HEALTH INFRASTRUCTURE SERVICE
Updated Reference: June 1994	Department: OUTPATIENT	Room Title: TREATMENT ROOM (DENTAL)	Reference Sheet Number: 25B-AN-RDS4 6A

FUNCTIONAL DESIGN REQUIREMENTS:

<p>This activity space provides facilities needed for the following activities:</p> <ul style="list-style-type: none"> <li>a. Patient arrives on foot.</li> <li>b. Patient arrives in a wheelchair.</li> <li>c. Patient is transferred from wheelchair to dental chair and vice versa.</li> <li>d. Patient is examined, diagnosed and treated in a dental chair.</li> <li>e. Clinical handwashing.</li> <li>f. Use of monitoring/diagnostic equipment.</li> <li>g. Doctors perform special dental procedures to treat patient.</li> </ul> <p>People Involved:</p> <ul style="list-style-type: none"> <li>1 x Dentist</li> <li>1 x Dental Aide</li> <li>1 x Patient</li> </ul> <p>Planning Relationships:</p> <ul style="list-style-type: none"> <li>a. Close to other Ancillary Service.</li> <li>b. Adjacent to other Treatment Rooms.</li> </ul> <p>This activity space provides facilities needed for the delivery of General Patient Care.</p>	<p>EQUIPMENT AND ACCESSORY CHECKLIST</p> <ul style="list-style-type: none"> <li>Dental chair, hydraulic</li> <li>Amalgamator, electric</li> <li>Instrument sterilizer, 100x100x406</li> <li>Dental unit (hydraulic)</li> <li>Dental unit with motor</li> <li>Dental x-ray, wall model</li> <li>Examining light</li> <li>Towel rack</li> <li>Waste receptacle</li> </ul>	<p>QUANTITY</p> <ul style="list-style-type: none"> <li>1</li> <li>1</li> <li>1</li> <li>1</li> <li>1</li> <li>1</li> <li>1</li> <li>1</li> </ul>	<p>REMARKS</p>
	<p>FURNITURE AND FIXTURE CHECKLIST</p> <ul style="list-style-type: none"> <li>Desk, 600x1200</li> <li>Swivel chair</li> <li>Chair, upright, stacking</li> <li>Adjustable stool</li> <li>Dental instrument cabinet</li> <li>Steel filing cabinet, 500x700</li> <li>Lavatory with gooseneck spout and knee control</li> <li>Counter, 900mm high with cabinets below</li> </ul>	<p>QUANTITY</p> <ul style="list-style-type: none"> <li>1</li> <li>1</li> <li>2</li> <li>1</li> <li>1</li> <li>1</li> <li>1</li> </ul>	<p>REMARKS</p>
	<p>ADDITIONAL EQUIPMENT AND ENGINEERING TERMINALS</p> <ul style="list-style-type: none"> <li>Rail, curtain, window</li> <li>Rail, curtain, cubicle</li> <li>Outlet, intercom</li> <li>Outlet, 10A, 2P, 240V, duplex</li> <li>Outlet, 15A, 2P, 240V, single</li> <li>Floor outlet, 15A, 2P, 240V, single</li> <li>Smoke detector</li> </ul>	<p>QUANTITY</p> <ul style="list-style-type: none"> <li>1</li> <li>2</li> <li>1</li> <li>4</li> <li>2</li> <li>2</li> <li>1</li> </ul>	<p>REMARKS</p> <ul style="list-style-type: none"> <li>grounding type, parallel slots duplex</li> <li>grounding type, tandem slot</li> <li>grounding type, tandem slot</li> </ul>

Hospital: Secondary, 25-Bed	ROOM DATA SHEET		Department of Health HEALTH INFRASTRUCTURE SERVICE
Updated Reference: June 1994	Department: OUTPATIENT	Room Title: TREATMENT ROOM (DENTAL)	Reference Sheet Number: 25B-AN-RDS4.6B
TECHNICAL DESIGN DATA:			
ENVIRONMENTAL CONDITIONS	DESIGN DATA	ENVIRONMENTAL CONDITIONS	DESIGN DATA
AIR		LIGHTING AND VISUAL	
Outdoor air temperature (deg. C)	ave. local station temp. reading	General illumination (LUX)	250-500
Room Temperature (deg. C)	25	Night illumination (LUX)	NA
Mechanical ventilation:		Task illumination (LUX)	5000-10000
Volume (cu.m./hr.-person)	12.75	Colour rendering	ESSENTIAL:desirable:unnecessary
Velocity (m./hr.)	900	Standby light	ESSENTIAL:desirable:unnecessary
Pressure:		Emergency light	ESSENTIAL:desirable:unnecessary
Exhaust (psi)	NA	Daylight	essential:DESIRABLE:unnecessary
Inlet (psi)	NA	View out	essential:DESIRABLE:unnecessary
% Dust filtration	93% - 99% @ 1 micron	Privacy	essential:desirable:UNNECESSARY
Humidity (% RH)	50	Black out	ESSENTIAL:desirable:unnecessary
Cooling load (TR)	1.2		
SOUND		SAFETY	
Acceptable sound level (db)	50	Accessible hot surface:	Instrument sterilizer
Speech privacy	ESSENTIAL:desirable:unnecessary	Maximum temperature (deg. C)	100
Quality which cannot be	tonal impact	Domestic hot water:	at lavatory
tolerated		Maximum temperature (deg. C)	70
		Access limit	medical staff and patient
		Fire risk	LOW : medium : high
		Other risks	NA

Hospital: Secondary, 25-Bed	ROOM DATA SHEET		Department of Health HEALTH INFRASTRUCTURE SERVICE				
Updated Reference: June 1994	Department: OUTPATIENT	Room Title: TREATMENT ROOM (DENTAL)	Reference Sheet Number: 25B-AN-RDS4.6C				
TECHNICAL DESIGN DATA:		LAYOUT OF ROOM AND SPACE COMPONENTS:					
DIRECT SERVICES	DESIGN DATA	<p>Scale 1:100 mts.</p>					
Disposal	hospital waste category: A,B,E,F						
Hot water	required at lavatory						
Cold water	required at lavatory & dental chair						
Drainage	required at lavatory & dental chair						
Gas	NA						
Compressed air	NA						
Steam	NA						
Others							
DIRECT DEMANDS ON FLOOR AND WALL							
Loading	NA						
Spillage	SLIGHT : occasional : frequent						
Foot traffic	LIGHT : medium : heavy						
Wheel traffic	LIGHT : medium : heavy						
Impacts	NA						
Abrasion	NA						
Easy maintenance	ESSENTIAL:desirable:unnecessary						
Vibration free	ESSENTIAL:desirable:unnecessary						
Door sets	wheelchair access						
Windows	clear, solar control, privacy control						
Internal glazing	nil						
		<p>SPACE DEMANDS (Total Minimum Space Required in sq.m.) : 18.00</p> <table border="1"> <thead> <tr> <th>Space Components</th> <th>Minimum Space Required/Component</th> </tr> </thead> <tbody> <tr> <td></td> <td></td> </tr> </tbody> </table>		Space Components	Minimum Space Required/Component		
Space Components	Minimum Space Required/Component						
		REGULATIONS AND NOTES:					

Hospital: Secondary, 25-Bed	ROOM DATA SHEET		Department of Health HEALTH INFRASTRUCTURE SERVICE
Updated Reference: June 1994	Department: MEDICAL SOCIAL SERVICE	Room Title: MEDICAL SOCIAL SERVICE OFFICE	Reference Sheet Number: 25B-AN-RDS6.1C
TECHNICAL DESIGN DATA:		LAYOUT OF ROOM AND SPACE COMPONENTS:	
DIRECT SERVICES	DESIGN DATA	<p>Scale 1:100 mts.</p>	
Disposal	hospital waste category: A		
Hot water	NA		
Cold water	NA		
Drainage	NA		
Gas	NA		
Compressed air	NA		
Steam	NA		
Others			
DIRECT DEMANDS ON FLOOR AND WALL			
Loading	NA		
Spillage	NA		
Foot traffic	light : MEDIUM : heavy		
Wheel traffic	light : MEDIUM : heavy		
Impacts	NA		
Abrasion	NA		
Easy maintenance	ESSENTIAL: desirable:unnecessary	SPACE DEMANDS (Total Minimum Space Required in sq.m.) : 18.00	
Vibration free	essential:DESIRABLE:unnecessary	Space Components	Minimum Space Required/Component
Door sets	wheelchair access		
Windows	clear, solar control	REGULATIONS AND NOTES:	
Internal glazing	nil	work area for reasonable conditions - 4.20 to 6.00 per person	

Hospital: Secondary, 25-Bed	DEPARTMENT DATA SHEET	Department of Health HEALTH INFRASTRUCTURE SERVICE
Updated Reference: June 1994	Department: M O R T U A R Y	Reference Sheet Number: 25B-AN-DDS7

LAYOUT PER DEPARTMENT SHOWING ROOMS AND SPACE COMPONENTS:

Scale: 1:100 mts.



Hospital: Secondary, 25-Bed	ROOM DATA SHEET		Department of Health HEALTH INFRASTRUCTURE SERVICE	
Updated Reference: June 1994	Department: MORTUARY	Room Title: LOBBY/WAITING AREA	Reference Sheet Number: 25B-AN-RDS7.1A	
FUNCTIONAL DESIGN REQUIREMENTS:				
<p>This activity space provides facilities needed for the following activities:</p> <ul style="list-style-type: none"> <li>a. The dead patient's family inquires about status of cadaver.</li> <li>b. The dead patient's family awaits for release of cadaver.</li> </ul> <p>People Involved:</p> <p>Family of dead patient.</p> <p>Planning Relationships:</p> <ul style="list-style-type: none"> <li>a. Adjacent to Autopsy Room.</li> </ul>		EQUIPMENT AND ACCESSORY CHECKLIST	QUANTITY	REMARKS
		FURNITURE AND FIXTURE CHECKLIST	QUANTITY	REMARKS
		Sofa, 750x2000 Coffee table	1 1	
		ADDITIONAL EQUIPMENT AND ENGINEERING TERMINALS	QUANTITY	REMARKS
		Rail, curtain, window Outlet, 10A, 2P, 240V	2 2	grounding type, parallel slots

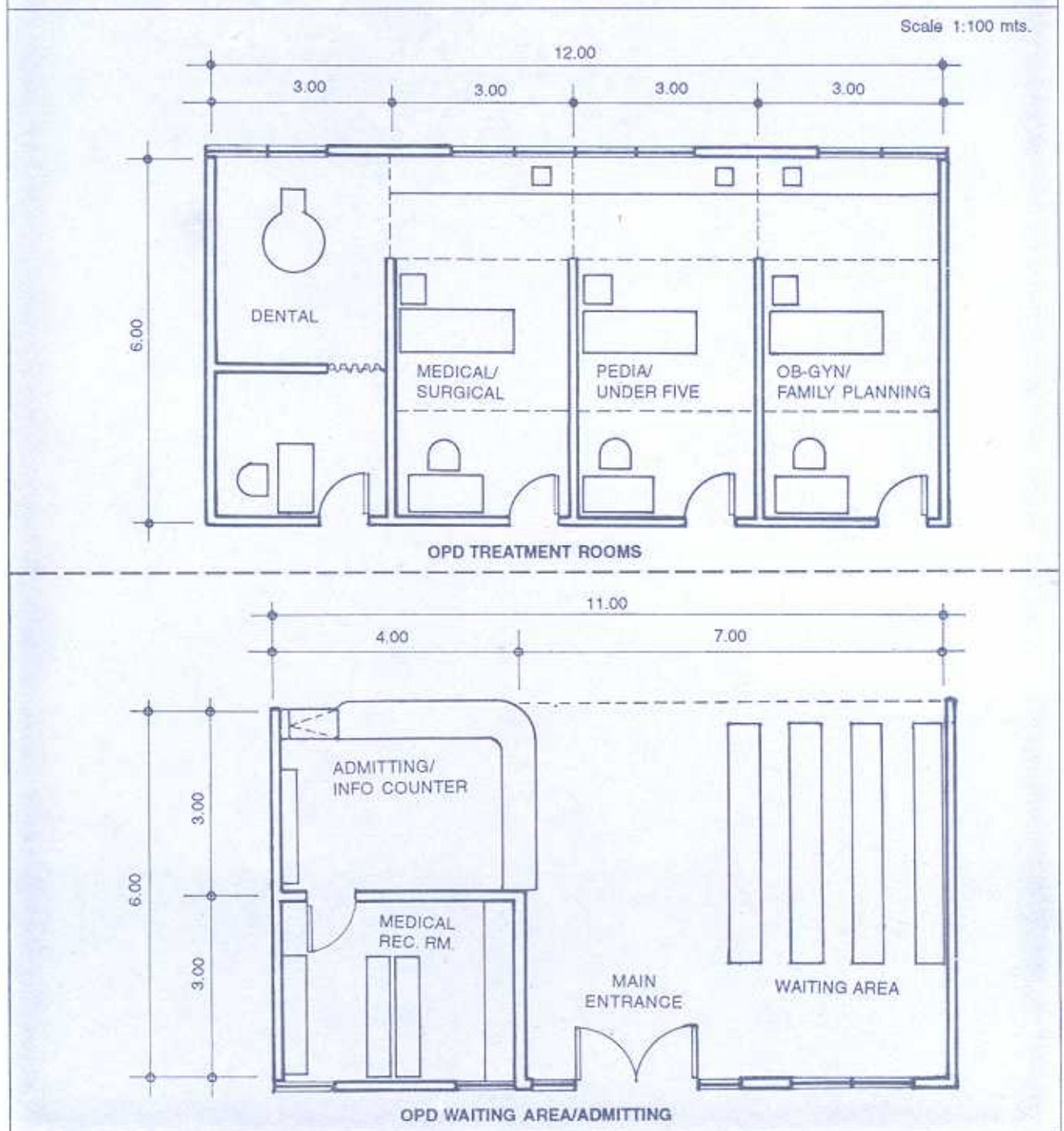
Hospital: Secondary, 25-Bed	ROOM DATA SHEET		Department of Health HEALTH INFRASTRUCTURE SERVICE
Updated Reference: June 1994	Department: MORTUARY	Room Title: AUTOPSY ROOM	Reference Sheet Number: 25B-AN-RDS7.2A
FUNCTIONAL DESIGN REQUIREMENTS:			
<p>This activity space provides facilities needed for the following activities:</p> <p>a. Pathologist performs autopsy procedure on dead patients.</p> <p>b. Temporary station point/storage of cadavers awaiting claim by relatives.</p> <p>People Involved:</p> <p>1 x Pathologist</p> <p>1 x Utility Worker</p> <p>Planning Relationships:</p> <p>a. Adjacent to Lobby/Waiting Area of Mortuary.</p>	<p>EQUIPMENT AND ACCESSORY CHECKLIST</p> <p>Scale</p> <p>Instrument sterilizer on stand</p> <p>Suction apparatus</p> <p>Waste paper receptacle</p> <p>Kick bucket</p>	<p>QUANTITY</p> <p>1</p> <p>1</p> <p>1</p> <p>1</p> <p>1</p>	<p>REMARKS</p>
	<p>FURNITURE AND FIXTURE CHECKLIST</p> <p>Footstool</p> <p>Adjustable stool</p> <p>Overhead shelves and cabinet</p> <p>Tiled counter, 900mm high, cabinets below</p> <p>Cabinet, 600x1200</p> <p>Autopsy table with sink</p> <p>Mayo table</p> <p>Combination instrument and scrub sink with gooseneck spout and spray and knee control</p>	<p>QUANTITY</p> <p>1</p> <p>1</p> <p>1</p> <p>1</p> <p>1</p> <p>1</p> <p>1</p>	<p>REMARKS</p>
	<p>ADDITIONAL EQUIPMENT AND ENGINEERING TERMINALS</p> <p>Rail, curtain, cubicle</p> <p>Rail, curtain, window</p> <p>Outlet, 10A, 2P, 240V, duplex</p>	<p>QUANTITY</p> <p>1</p> <p>2</p> <p>4</p>	<p>REMARKS</p> <p>grounding type, parallel slots</p>

Hospital: Secondary, 25-Bed	ROOM DATA SHEET		Department of Health HEALTH INFRASTRUCTURE SERVICE
Updated Reference: June 1994	Department: MORTUARY	Room Title: AUTOPSY ROOM	Reference Sheet Number: 25B-AN-RDS7.2B
TECHNICAL DESIGN DATA:			
ENVIRONMENTAL CONDITIONS	DESIGN DATA	ENVIRONMENTAL CONDITIONS	DESIGN DATA
AIR		LIGHTING AND VISUAL	
Outdoor air temperature (deg. C)	ave. local station temp. reading	General illumination (LUX)	500
Room Temperature (deg. C)	NA	Night illumination (LUX)	NA
Mechanical ventilation:		Task illumination (LUX)	10,000
Volume (cu m./hr.-person)	NA	Colour rendering	ESSENTIAL:desirable:unnecessary
Velocity (m./hr.)	NA	Standby light	essential:DESIRABLE:unnecessary
Pressure:		Emergency light	essential:DESIRABLE:unnecessary
Exhaust (psi)	NA	Daylight	essential:DESIRABLE:unnecessary
Inlet (psi)	NA	View out	essential:desirable:UNNECESSARY
% Dust filtration	NA	Privacy	ESSENTIAL:desirable:unnecessary
Humidity (% RH)	NA	Black out	essential:desirable:UNNECESSARY
Cooling load (TR)	NA		
SOUND		SAFETY	
Acceptable sound level (db)	50	Accessible hot surface:	instrument sterilizer
Speech privacy	essential:DESIRABLE:unnecessary	Maximum temperature (deg. C)	100
Quality which cannot be	NA	Domestic hot water:	at sink
tolerated		Maximum temperature (deg. C)	70
		Access limit	morgue staff
		Fire risk	LOW : medium : high
		Other risks	exposure to hazardous chemicals

Hospital: Secondary, 25-Bed	ROOM DATA SHEET		Department of Health HEALTH INFRASTRUCTURE SERVICE																
Updated Reference: June 1994	Department: MORTUARY	Room Title: AUTOPSY ROOM	Reference Sheet Number: 25B-AN-RDS7.2C																
TECHNICAL DESIGN DATA:		LAYOUT OF ROOM AND SPACE COMPONENTS:																	
DIRECT SERVICES	DESIGN DATA	<p>Scale: 1:100 mts.</p>																	
Disposal	hospital waste category: A,B,D,E,F																		
Hot water	required at sink																		
Cold water	required at sink																		
Drainage	required at sink & floor																		
Gas	NA																		
Compressed air	NA																		
Steam	NA																		
Others																			
DIRECT DEMANDS ON FLOOR AND WALL																			
Loading	NA																		
Spillage	slight : occasional : FREQUENT																		
Foot traffic	light : MEDIUM : heavy																		
Wheel traffic	light : MEDIUM : heavy																		
Impacts	NA																		
Abrasion	NA																		
Easy maintenance	ESSENTIAL: desirable: unnecessary																		
Vibration free	ESSENTIAL: desirable: unnecessary																		
Door sets	stretcher trolley access:	<p>Key</p> <table border="0"> <tr> <td>1 Autopsy table with sink</td> <td>7 Cabinet, 600x1200</td> </tr> <tr> <td>2 Tiled counter, 900mm high, cabinets below</td> <td>8 Dressing cubicle</td> </tr> <tr> <td>3 Overhead shelves and cabinet</td> <td>9 Mayo table</td> </tr> <tr> <td>4 Combination instrument and scrub sink w/gooseneck spout and spray and knee control</td> <td>10 Footstool</td> </tr> <tr> <td>5 Adjustable stool</td> <td>11 Suction apparatus</td> </tr> <tr> <td>6 Instrument sterilizer on stand</td> <td>12 Kickbucket</td> </tr> <tr> <td></td> <td>13 Scale</td> </tr> <tr> <td></td> <td>14 Waste paper receptacle</td> </tr> </table>		1 Autopsy table with sink	7 Cabinet, 600x1200	2 Tiled counter, 900mm high, cabinets below	8 Dressing cubicle	3 Overhead shelves and cabinet	9 Mayo table	4 Combination instrument and scrub sink w/gooseneck spout and spray and knee control	10 Footstool	5 Adjustable stool	11 Suction apparatus	6 Instrument sterilizer on stand	12 Kickbucket		13 Scale		14 Waste paper receptacle
1 Autopsy table with sink	7 Cabinet, 600x1200																		
2 Tiled counter, 900mm high, cabinets below	8 Dressing cubicle																		
3 Overhead shelves and cabinet	9 Mayo table																		
4 Combination instrument and scrub sink w/gooseneck spout and spray and knee control	10 Footstool																		
5 Adjustable stool	11 Suction apparatus																		
6 Instrument sterilizer on stand	12 Kickbucket																		
	13 Scale																		
	14 Waste paper receptacle																		
SPACE DEMANDS (Total Minimum Space Required in sq.m.) : 24.00																			
Windows	clear, solar control	Space Components	Minimum Space Required/Component																
Internal glazing	nil	REGULATIONS AND NOTES:																	

Hospital: Secondary, 25-Bed	DEPARTMENT DATA SHEET	Department of Health HEALTH INFRASTRUCTURE SERVICE
Updated Reference: June 1994	Department: OUTPATIENT	Reference Sheet Number: 25B-AN-DDS4

LAYOUT PER DEPARTMENT SHOWING ROOMS AND SPACE COMPONENTS:



Hospital: Secondary, 25-Bed	ROOM DATA SHEET		Department of Health HEALTH INFRASTRUCTURE SERVICE
Updated Reference: June 1994	Department: OUTPATIENT	Room Title: WAITING AREA	Reference Sheet Number: 25B-AN-RDS4.1A
FUNCTIONAL DESIGN REQUIREMENTS:			
<p>This activity space provides facilities needed for the following activities:</p> <ul style="list-style-type: none"> <li>a. Patients await their turns to be interviewed and their cases be assessed at the triage.</li> <li>b. Patients await their turns to be attended to in any of the treatment rooms.</li> </ul> <p>People Involved:</p> <p>Outpatients</p> <p>Planning Relationships:</p> <ul style="list-style-type: none"> <li>a. Close to OPD Treatment Rooms.</li> <li>b. Adjacent to OPD Admitting/Info Counter and Records.</li> </ul>	EQUIPMENT AND ACCESSORY CHECKLIST	QUANTITY	REMARKS
	Electric fan Waste paper receptacle	2	
	FURNITURE AND FIXTURE CHECKLIST	QUANTITY	REMARKS
	Waiting bench, 600x3600	4	upholstered
	ADDITIONAL EQUIPMENT AND ENGINEERING TERMINALS	QUANTITY	REMARKS
Rail, curtain, window Outlet, 10A, 2P, 240V, duplex	3 4	grounding type, parallel slots	

Hospital: Secondary, 25-Bed	ROOM DATA SHEET		Department of Health HEALTH INFRASTRUCTURE SERVICE
Updated Reference: June 1994	Department: OUTPATIENT	Room Title: WAITING AREA	Reference Sheet Number: 25B-AN-RDS4.1C
TECHNICAL DESIGN DATA:		LAYOUT OF ROOM AND SPACE COMPONENTS:	
DIRECT SERVICES	DESIGN DATA	<p>Scale 1:100 mts.</p> <p>7.00</p> <p>6.00</p> <p>1 Waiting bench</p> <p>2 Waste paper receptacle</p> <p>Key</p> <p>1 Waiting bench</p> <p>2 Waste paper receptacle</p>	
Disposal	hospital waste category: A		
Hot water	NA		
Cold water	NA		
Drainage	NA		
Gas	NA		
Compressed air	NA		
Steam	NA		
Others			
DIRECT DEMANDS ON FLOOR AND WALL			
Loading	NA		
Spillage	NA		
Foot traffic	light : medium : HEAVY		
Wheel traffic	light : medium : HEAVY		
Impacts	NA		
Abrasion	NA		
Easy maintenance	ESSENTIAL:desirable:unnecessary		
Vibration free	ESSENTIAL:desirable:unnecessary		
Door sets	bed, stretcher trolley, and wheel-		
	chair access	SPACE DEMANDS (Total Minimum Space Required in sq.m.) : 42.00	
Windows	clear, solar control	REGULATIONS AND NOTES:	
Internal glazing	nil		

Hospital: Secondary, 25-Bed	ROOM DATA SHEET		Department of Health HEALTH INFRASTRUCTURE SERVICE
Updated Reference: June 1994	Department: MEDICAL RECORDS	Room Title: MEDICAL RECORDS ROOM	Reference Sheet Number: 25B-AN-RDS5.1B
TECHNICAL DESIGN DATA:			
ENVIRONMENTAL CONDITIONS	DESIGN DATA	ENVIRONMENTAL CONDITIONS	DESIGN DATA
AIR		LIGHTING AND VISUAL	
Outdoor air temperature (deg. C)	ave. local station temp. reading	General illumination (LUX)	500
Room Temperature (deg. C)	25	Night illumination (LUX)	NA
Mechanical ventilation:		Task illumination (LUX)	NA
Volume (cu.m./hr./person)	12.75	Colour rendering	essential:DESIRABLE:unnecessary
Velocity (m./hr.)	750	Standby light	essential:DESIRABLE:unnecessary
Pressure:		Emergency light	essential:DESIRABLE:unnecessary
Exhaust (psi)	NA	Daylight	essential:DESIRABLE:unnecessary
Inlet (psi)	NA	View out	essential:DESIRABLE:unnecessary
% Dust filtration	93% - 99% @ 1 micron	Privacy	essential:DESIRABLE:unnecessary
Humidity (% RH)	70	Black out	essential:desirable:UNNECESSARY
Cooling load (TR)	2.0		
SOUND		SAFETY	
Acceptable sound level (db)	50	Accessible hot surface:	NA
Speech privacy	ESSENTIAL,desirable unnecessary	Maximum temperature (deg. C)	NA
Quality which cannot be	tonal impact	Domestic hot water:	NA
tolerated		Maximum temperature (deg. C)	NA
		Access limit	medical records and medical staff
		Fire risk	low : medium : HIGH
		Other risks	possible termite infestation

Hospital: Secondary, 25-Bed	ROOM DATA SHEET		Department of Health HEALTH INFRASTRUCTURE SERVICE
Updated Reference: June 1994	Department: MEDICAL RECORD	Room Title: MEDICAL RECORDS ROOM	Reference Sheet Number: 25B-AN-RDS5.1C

TECHNICAL DESIGN DATA:		LAYOUT OF ROOM AND SPACE COMPONENTS:			
DIRECT SERVICES	DESIGN DATA	Scale 1:100 mts.			
Disposal	hospital waste category: A				
Hot water	NA				
Cold water	NA				
Drainage	NA				
Gas	NA				
Compressed air	NA				
Steam	NA				
Others	NA				
DIRECT DEMANDS ON FLOOR AND WALL				Key	
Loading	light : medium : HEAVY			1 Steel filing cabinet, 500x700	
Spillage	NA	2 Typewriter table, 400x800			
Foot traffic	light : MEDIUM : heavy	3 Desk, 750x1200			
Wheel traffic	LIGHT : medium : heavy	4 Swivel chair			
Impacts	LIGHT : medium : heavy	5 Adjustable stool			
Abrasion	SLIGHT : occasional : frequent	6 Transaction counter			
Easy maintenance	ESSENTIAL: desirable: unnecessary	7 Chair, upright, stacking			
Vibration free	ESSENTIAL: desirable: unnecessary	8 Writing counter			
Door sets	wheelchair access	9 Open shelving, 400 mm deep			
		SPACE DEMANDS (Total Minimum Space Required in sq.m.) : 36.00			
		Space Components	Minimum Space Required/Component		
Windows	clear, solar control				
		REGULATIONS AND NOTES:			
Internal glazing	clear				

Hospital: Secondary, 25-Bed	ROOM DATA SHEET		Department of Health HEALTH INFRASTRUCTURE SERVICE
Updated Reference: June 1994	Department: MEDICAL SOCIAL SERVICE	Room Title: MEDICAL SOCIAL SERVICE OFFICE	Reference Sheet Number: 25B-AN-RDS6-1A
FUNCTIONAL DESIGN REQUIREMENTS:			
<p>This activity space provides facilities needed for the following activities:</p> <ul style="list-style-type: none"> <li>a. Patient presents referral slip from Admitting Clerk.</li> <li>b. Medical Social Worker interviews and classifies patient and indicates recommendations in the referral slip and records data in logbook.</li> <li>c. Medical Social Worker reads, writes and uses telephone in his work station.</li> <li>d. Clerk writes and uses typewriter to update records.</li> <li>e. Clerk stores and retrieves records in file.</li> <li>f. Medical Social Worker and Clerk receive visitors and entertain inquiries from patients.</li> </ul> <p>People Involved:</p> <ul style="list-style-type: none"> <li>1 x Medical Social Worker</li> <li>1 x Clerk</li> </ul> <p>Planning Relationships:</p> <ul style="list-style-type: none"> <li>a. Close to Admitting Office.</li> <li>b. Close to Emergency Suite.</li> <li>c. Close to the Office of the Chief of Hospital.</li> <li>d. Close to Business and Finance Office.</li> </ul>	EQUIPMENT AND ACCESSORY CHECKLIST	QUANTITY	REMARKS
	Typewriter	1	
	FURNITURE AND FIXTURE CHECKLIST	QUANTITY	REMARKS
	Chair, upright, stacking Swivel chair Desk, 750x1200 Steel filing cabinet, 500x700 Cabinet, 600x2000 Desk, 750x1500 Typewriter table, 400x800	5 1 1 1 1 1 1	
ADDITIONAL EQUIPMENT AND ENGINEERING TERMINALS	QUANTITY	REMARKS	
Rail, curtain, window Outlet, 10A, 2P, 240V Outlet, 15A, 2P, 240V Outlet, intercom Outlet, telephone Smoke detector	1 4 1 1 1 1	grounding type, parallel slots grounding type, tandem slots	

Hospital: Secondary, 25-Bed	ROOM DATA SHEET		Department of Health HEALTH INFRASTRUCTURE SERVICE
Updated Reference: June 1994	Department: MEDICAL SOCIAL SERVICE	Room Title: MEDICAL SOCIAL SERVICE OFFICE	Reference Sheet Number: 25B-AN-RDS6.1B
TECHNICAL DESIGN DATA:			
ENVIRONMENTAL CONDITIONS	DESIGN DATA	ENVIRONMENTAL CONDITIONS	DESIGN DATA
A/P:		LIGHTING AND VISUAL	
Outdoor air temperature (deg. C)	ave, local station temp. reading	General illumination (LUX)	500
Room Temperature (deg. C)	25	Night illumination (LUX)	NA
Mechanical ventilation:		Task illumination (LUX)	NA
Volume (cu m./hr.-person)	12.75	Colour rendering	ESSENTIAL:desirable:unnecessary
Velocity (m./hr.)	750	Standby light	essential:DESIRABLE:unnecessary
Pressure:		Emergency light	essential:desirable:UNNECESSARY
Exhaust (psi)	NA	Daylight	essential:desirable:UNNECESSARY
Inlet (psi)	NA	View out	essential:DESIRABLE:unnecessary
% Dust filtration	93% - 99% @ 1 micron	Privacy	ESSENTIAL:desirable:unnecessary
Humidity (% RH)	50	Black out	essential:desirable:UNNECESSARY
Cooling load (TR)	1.0		
SOUND		SAFETY	
Acceptable sound level (db)	45	Accessible hot surface:	NA
Speech privacy	ESSENTIAL:desirable:unnecessary	Maximum temperature (deg. C)	NA
Quality which cannot be	tonal impact	Domestic hot water:	NA
tolerated		Maximum temperature (deg. C)	NA
		Access limit	hospital staff and patients
		Fire risk	LOW : medium : high
		Other risks	NA

Hospital: Secondary, 25-Bed	ROOM DATA SHEET		Department of Health HEALTH INFRASTRUCTURE SERVICE
Updated Reference: June 1994	Department: MORTUARY	Room Title: LOBBY/WAITING AREA	Reference Sheet Number: 25B-AN-RDS7.1B
TECHNICAL DESIGN DATA:			
ENVIRONMENTAL CONDITIONS	DESIGN DATA	ENVIRONMENTAL CONDITIONS	DESIGN DATA
AIR		LIGHTING AND VISUAL	
Outdoor air temperature (deg. C)	ave. local station temp. reading	General illumination (LUX)	150
Room Temperature (deg. C)	ambient	Night illumination (LUX)	50
Mechanical ventilation:		Task illumination (LUX)	NA
Volume (cu.m./hr.-person)	NA	Colour rendering	essential:DESIRABLE:unnecessary
Velocity (m./hr.)	NA	Standby light	essential:DESIRABLE:unnecessary
Pressure:		Emergency light	ESSENTIAL:desirable:unnecessary
Exhaust (psi)	NA	Daylight	essential:DESIRABLE:unnecessary
Inlet (psi)	NA	View out	essential:DESIRABLE:unnecessary
% Dust filtration	NA	Privacy	essential:desirable:UNNECESSARY
Humidity (% RH)	NA	Black out	essential:desirable:UNNECESSARY
Cooling load (TR)	NA		
SOUND		SAFETY	
Acceptable sound level (db)	60	Accessible hot surface:	NA
Speech privacy	essential:DESIRABLE:unnecessary	Maximum temperature (deg. C)	NA
Quality which cannot be	tonal impact	Domestic hot water:	NA
tolerated		Maximum temperature (deg. C)	NA
		Access limit	general public
		Fire risk	LOW : medium : high
		Other risks	NA

Hospital: Secondary, 25-Bed	ROOM DATA SHEET		Department of Health HEALTH INFRASTRUCTURE SERVICE
Updated Reference: June 1994	Department: MORTUARY	Room Title: LOBBY/WAITING AREA	Reference Sheet Number: 25B-AN-RDS7.1C
TECHNICAL DESIGN DATA:		LAYOUT OF ROOM AND SPACE COMPONENTS:	
DIRECT SERVICES	DESIGN DATA	<p>Scale: 1:100 mts.</p>	
Disposal	hospital waste category: A		
Hot water	NA		
Cold water	NA		
Drainage	NA		
Gas	NA		
Compressed air	NA		
Steam	NA		
Others:			
DIRECT DEMANDS ON FLOOR AND WALL			
Loading	NA	SPACE DEMANDS (Total Minimum Space Required in sq m.) : 12.00	
Spillage	NA	Space Components	Minimum Space Required/Component
Foot traffic	light : MEDIUM : heavy		
Wheel traffic	light : MEDIUM : heavy		
Impacts	NA		
Abrasion	NA		
Easy maintenance	ESSENTIAL:desirable:unnecessary		
Vibration free	ESSENTIAL:desirable:unnecessary		
Door sets	stretcher trolley access		
Windows	clear, solar control	REGULATIONS AND NOTES:	
		Mortuary should be located at least 15.00 mts. away from.	
Internal glazing	nil	Dietary facilities.	