

VOLUME 3 - SCHEMATIC PLANS AND TECHNICAL REQUIREMENTS  
OF 25-BED HOSPITAL

3.2 - CLINICAL Service Facility

Hospital: Secondary, 25-Bed	SERVICE FACILITY SHEET INDEX			Department of Health HEALTH INFRASTRUCTURE SERVICE	
Updated Reference: June 1994	Service Facility Title: CLINICAL			Reference Sheet Number: 25B-CL-SFSI1	
ROOM TITLE		SPACE DEMAND (SQ. MTS.)	TOTAL AREA (SQ. MTS.)	REFERENCE SHEET NUMBER	PAGE
EMERGENCY ROOM			78.00	25B-CL-DDS1	3.2.1
Nurse Station		17.50		25B-CL-RDS1.1	3.2.1.1A
Treatment Room		12.50		25B-CL-RDS1.2	3.2.1.2A
Observation Room		18.00		25B-CL-RDS1.3	3.2.1.3A
Doctor-On-Duty Room		18.00		25B-CL-RDS1.4	3.2.1.4A
Stretcher Nook / Sub-lobby		12.00		25B-CL-RDS1.5	3.2.1.5A
SURGICAL/DELIVERY SERVICE COMPLEX			282.00	25B-CL-DDS2	3.2.2
Operating Room		36.00		25B-CL-RDS2.1	3.2.2.1A
Delivery Room		36.00		25B-CL-RDS2.2	3.2.2.2A
Labor Room		36.00		25B-CL-RDS2.3	3.2.2.3A
Scrub-up Area		8.75		25B-CL-RDS2.4	3.2.2.4A
Sub-sterilizing Room		6.25		25B-CL-RDS2.5	3.2.2.5A
Surgical Supervisor's Area		8.75		25B-CL-RDS2.6	3.2.2.6A
Anesthesia Storage		12.25		25B-CL-RDS2.7	3.2.2.7A
Anesthesiologist's Area		8.75		25B-CL-RDS2.8	3.2.2.8A
Sterile Instrument & Supply Storage		12.25		25B-CL-RDS2.9	3.2.2.9A
Clean-up Room		15.00		25B-CL-RDS2.10	3.2.2.10A
Staff Locker Room and Toilet		27.00		25B-CL-RDS2.11	3.2.2.11A
Staff Lounge		27.00		25B-CL-RDS2.12	3.2.2.12A
Recovery Room		48.00		25B-CL-RDS2.13	3.2.2.13A
CENTRAL STERILIZING & SUPPLY ROOM		42.00	42.00	25B-CL-RDS3.1	3.2.3.1A



Hospital: Secondary, 25-Bed	ROOM DATA SHEET		Department of Health HEALTH INFRASTRUCTURE SERVICE
Updated Reference: June 1994	Department: EMERGENCY	Room Title: NURSE STATION	Reference Sheet Number: 25B-CL-RDS1.1B
TECHNICAL DESIGN DATA:			
ENVIRONMENTAL CONDITIONS	DESIGN DATA	ENVIRONMENTAL CONDITIONS	DESIGN DATA
AIR		LIGHTING AND VISUAL	
Outdoor air temperature (deg. C)	ave. local station temp. reading	General illumination (LUX)	500-750
Room Temperature (deg. C)	25	Night illumination (LUX)	NA
Mechanical ventilation:		Task illumination (LUX)	NA
Volume (cu.m./hr./person)	12.75	Colour rendering	ESSENTIAL:desirable:unnecessary
Velocity (m./hr.)	750	Standby light	ESSENTIAL:desirable:unnecessary
Pressure:		Emergency light	ESSENTIAL:desirable:unnecessary
Exhaust (psi)	NA	Daylight	essential:DESIRABLE:unnecessary
Inlet (psi)	NA	View out	essential:desirable:UNNECESSARY
% Dust filtration	93% - 99% @ 1 micron	Privacy	essential:desirable:UNNECESSARY
Humidity (% RH)	50	Black out	essential:desirable:UNNECESSARY
Cooling load (TR)	1.0		
SOUND		SAFETY	
Acceptable sound level (db)	60	Accessible hot surface:	instrument sterilizer
Speech privacy	essential:desirable:UNNECESSARY	Maximum temperature (deg. C)	100
Quality which cannot be	tonal impact	Domestic hot water:	at sink
tolerated		Maximum temperature (deg. C)	70
		Access limit	nursing and medical staff
		Fire risk	LOW : medium : high
		Other risks	NA

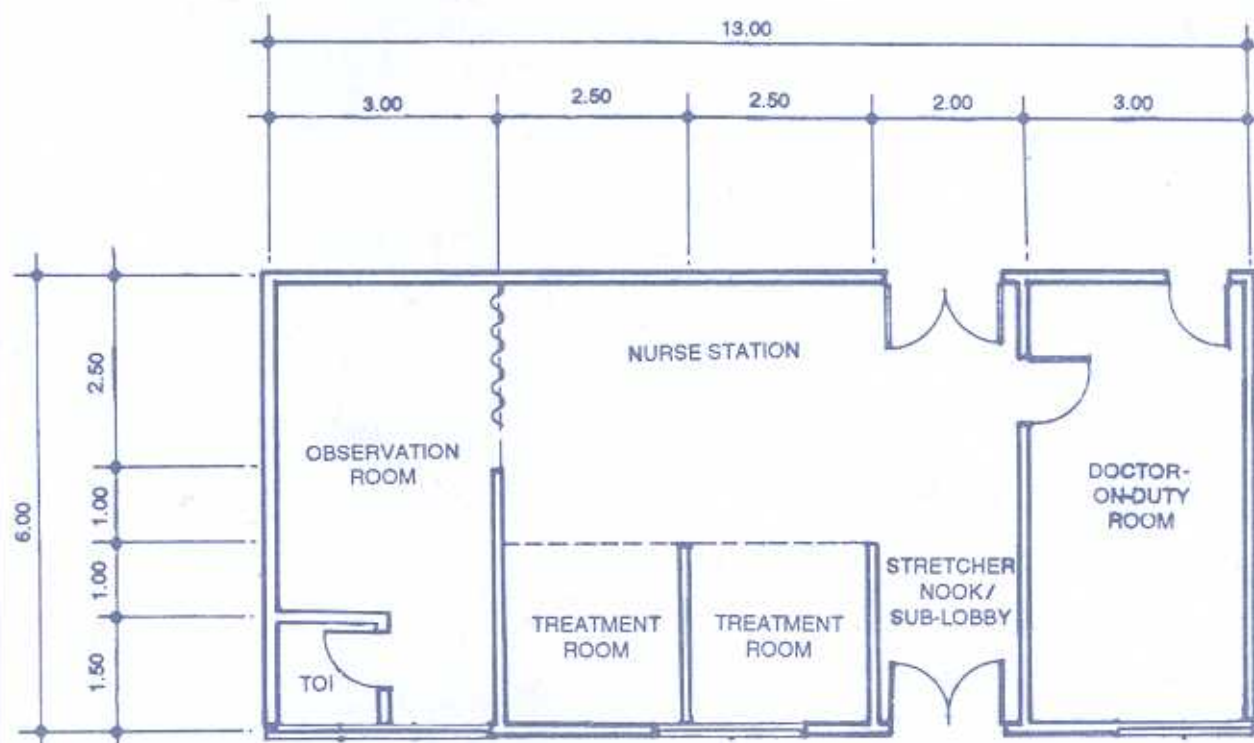


Hospital: Secondary, 25-Bed	ROOM DATA SHEET		Department of Health HEALTH INFRASTRUCTURE SERVICE
Updated Reference: June 1994	Department: EMERGENCY	Room Title: DOCTOR- ON-DUTY ROOM	Reference Sheet Number: 25B-CL-RDS1 4B
TECHNICAL DESIGN DATA:			
ENVIRONMENTAL CONDITIONS	DESIGN DATA	ENVIRONMENTAL CONDITIONS	DESIGN DATA
AIR		LIGHTING AND VISUAL	
Outdoor air temperature (deg. C)	ave. local station temp. reading	General illumination (LUX)	250
Room Temperature (deg. C)	25	Night illumination (LUX)	NA
Mechanical ventilation:		Task illumination (LUX)	NA
Volume (cu.m./hr./person)	12.75	Colour rendering	essential:DESIRABLE.unnecessary
Velocity (m./hr.)	750	Standby light	essential:DESIRABLE.unnecessary
Pressure:		Emergency light	essential:desirable:UNNECESSARY
Exhaust (psi)	NA	Daylight	essential:DESIRABLE:unnecessary
Inlet (psi)	NA	View out	essential:DESIRABLE:unnecessary
% Dust filtration	93% - 99% @ 1 micron	Privacy	essential:DESIRABLE.unnecessary
Humidity (% RH)	50	Black out	essential:desirable:UNNECESSARY
Cooling load (TR)	1.5		
SOUND		SAFETY	
Acceptable sound level (db)	50	Accessible hot surface:	NA
Speech privacy	essential:DESIRABLE.unnecessary	Maximum temperature (deg. C)	NA
Quality which cannot be	tonal impact	Domestic hot water:	NA
tolerated		Maximum temperature (deg. C)	NA
		Access limit	medical staff
		Fire risk	LOW : medium : high
		Other risks:	NA

Hospital: Secondary, 25-Bed	DEPARTMENT DATA SHEET	Department of Health HEALTH INFRASTRUCTURE SERVICE
Updated Reference: June 1994	Department: EMERGENCY ROOM	Reference Sheet Number: 25B-CL-DDS1

LAYOUT PER DEPARTMENT SHOWING ROOMS AND SPACE COMPONENTS:

Scale 1:100 mts.



Hospital: Secondary, 25-Bed	ROOM DATA SHEET		Department of Health HEALTH INFRASTRUCTURE SERVICE
Updated Reference: June 1994	Department: EMERGENCY	Room Title: NURSE STATION	Reference Sheet Number: 25B-CL-RDS1 1A
FUNCTIONAL DESIGN REQUIREMENTS:			
<p>This activity space provides facilities needed for the following activities:</p> <ul style="list-style-type: none"> <li>a. Nurse makes inquiries and records necessary information from/about patients rushed to ER.</li> <li>b. Nurse performs other medical monitoring activities.</li> <li>c. Nurse updates records regarding ER patients and ER supplies.</li> <li>d. Nurse makes inventories of ER supplies and performs their activities to maintain order in the ER area.</li> </ul> <p>People Involved:</p> <ul style="list-style-type: none"> <li>1 x Nurse</li> <li>1 x Nursing Attendant</li> </ul> <p>Planning Relationships:</p> <ul style="list-style-type: none"> <li>a. Close to Emergency Suite Entrance.</li> <li>b. Adjacent to Treatment and Minor Operating Room.</li> </ul>	<p>EQUIPMENT AND ACCESSORY CHECKLIST</p> <ul style="list-style-type: none"> <li>Instrument sterilizer 1</li> <li>Instrument table 1</li> <li>Wall clock with second hand 1</li> <li>Splints 1</li> <li>Waste receptacle 1</li> </ul>	QUANTITY	REMARKS
	<p>FURNITURE AND FIXTURE CHECKLIST</p> <ul style="list-style-type: none"> <li>Chair, upright, stacking 1</li> <li>Desk, 750x1200 1</li> <li>Steel filing cabinet, 500x700 1</li> <li>Wall cabinet for splints</li> <li>Counter, 900 mm high cabinets below 1</li> <li>Sink in counter</li> </ul>	QUANTITY	REMARKS
	<p>ADDITIONAL EQUIPMENT AND ENGINEERING TERMINALS</p> <ul style="list-style-type: none"> <li>Outlet, telephone 1</li> <li>Outlet, 10A, 2P, 240V, duplex 2</li> <li>Outlet, 15A, 2P, 240V, single 1</li> <li>Outlet, intercom 1</li> <li>Smoke detector 1</li> </ul>	QUANTITY	REMARKS

Hospital: Secondary, 25-Bed	ROOM DATA SHEET		Department of Health HEALTH INFRASTRUCTURE SERVICE
Updated Reference June 1994	Department: EMERGENCY	Room Title: TREATMENT ROOM	Reference Sheet Number: 25B-CL-RDS1.2A
FUNCTIONAL DESIGN REQUIREMENTS:			
<p>This activity space provides facilities needed for the following activities:</p> <ul style="list-style-type: none"> <li>a. Patient may arrive on foot.</li> <li>b. Patient may arrive on wheel chair.</li> <li>c. Use of diagnostic equipment.</li> <li>d. Patient is treated for minor injuries and illness.</li> <li>e. Physician, aided by Nurses and Nursing Attendants, performs monitoring and diagnostic activities and administers proper treatment to patients rushed to ER.</li> <li>f. Transfer of patient from examining table to stretcher trolley, to go to observation room or nursing wards.</li> <li>g. Patient is assisted by Nurse/Nursing Attendant to move out from examining table and be discharged.</li> </ul> <p>People Involved:</p> <ul style="list-style-type: none"> <li>1 x Resident Physician</li> <li>1 x Nurse</li> <li>1 x Nursing Attendant</li> <li>1 x Patient</li> </ul> <p>Planning Relationships:</p> <ul style="list-style-type: none"> <li>a. Close to Emergency Room Entrance.</li> <li>b. Adjacent to Nurse Station and Minor Operating Room.</li> </ul> <p>This activity space provides facilities needed for the delivery of General Patient Care.</p>	<p>EQUIPMENT AND ACCESSORY CHECKLIST</p> <p>Resuscitating apparatus 2</p> <p>Oxygen unit 2</p> <p>Examining table 2</p> <p>Examining light 2</p> <p>Waste receptacle 1</p> <p>Adult weighing scale 2</p> <p>Infant weighing scale 2</p> <p>Manual resuscitator 2</p> <p>Nebulizer 2</p> <p>BP apparatus (stand-by type) 1</p> <p>Suction apparatus 2</p>	<p>QUANTITY</p> <p>2</p> <p>2</p> <p>2</p> <p>2</p> <p>1</p> <p>2</p> <p>2</p> <p>2</p> <p>1</p> <p>2</p>	<p>REMARKS</p> <p>with height meter</p>
	<p>FURNITURE AND FIXTURE CHECKLIST</p> <p>Footstool 2</p> <p>Table, 406x508 2</p>	<p>QUANTITY</p> <p>2</p> <p>2</p>	<p>REMARKS</p>
	<p>ADDITIONAL EQUIPMENT AND ENGINEERING TERMINALS</p> <p>Rail, curtain, window 1</p> <p>Rail, curtain, cubicle 2</p> <p>Outlet, telephone 1</p> <p>Outlet, 10A, 2P, 240V, duplex 2</p> <p>Outlet, 15A, 2P, 240V, single 1</p>	<p>QUANTITY</p> <p>1</p> <p>2</p> <p>1</p> <p>2</p> <p>1</p>	<p>REMARKS</p> <p>local grounding type, parallel slots</p> <p>grounding type, tandem slots</p>



Hospital: Secondary, 25-Bed	R O O M   D A T A   S H E E T		Department of Health HEALTH INFRASTRUCTURE SERVICE
Updated Reference: June 1994	Department: EMERGENCY	Room Title: DOCTOR- ON-DUTY ROOM	Reference Sheet Number: 25B-CL-RDS1.4A
FUNCTIONAL DESIGN REQUIREMENTS:			
<p>This activity space provides facilities needed for the following activities:</p> <ul style="list-style-type: none"> <li>a. Doctor on duty reads, writes, and uses telephone in his table.</li> <li>b. Doctor on duty uses couch to rest while awaiting emergency calls.</li> </ul> <p>People Involved:</p> <p>1 x Resident Physician</p> <p>Planning Relationships:</p> <ul style="list-style-type: none"> <li>a. Adjacent to Emergency Room.</li> </ul>	EQUIPMENT AND ACCESSORY CHECKLIST	QUANTITY	REMARKS
	FURNITURE AND FIXTURE CHECKLIST	QUANTITY	REMARKS
	Table, 750x1200 Chair, upright, stacking Couch, 700x1800 Wall cabinet, 300mm deep Counter, 900 mm high with cabinets below	1 1 1	
	ADDITIONAL EQUIPMENT AND ENGINEERING TERMINALS	QUANTITY	REMARKS
	Rail, curtain, window Outlet, intercom Outlet, 10A, 2P, 240V, duplex Outlet, 15A, 2P, 240V, single Smoke detector Paging speaker	1 1 4 1 1 1	grounding type, parallel slots grounding type, tandem slots

Hospital: Secondary, 25-Bed	ROOM DATA SHEET		Department of Health HEALTH INFRASTRUCTURE SERVICE
Updated Reference: June 1994	Department: EMERGENCY	Room Title: DOCTOR-ON-DUTY ROOM	Reference Sheet Number: 25B-CL-RDS1.4C
TECHNICAL DESIGN DATA:		LAYOUT OF ROOM AND SPACE COMPONENTS:	
DIRECT SERVICES	DESIGN DATA	<p>Scale 1:100 mts.</p>	
Disposal	hospital waste category: A		
Hot water	NA		
Cold water	NA		
Drainage	NA		
Gas	NA		
Compressed air	NA		
Steam	NA		
Others			
DIRECT DEMANDS ON FLOOR AND WALL			
Loading	NA		
Spillage	NA		
Foot traffic	LIGHT : medium : heavy	<p>Key</p> <p>1 Table, 750x1200      3 Couch, 700x1800</p> <p>2 Chair, upright, stacking      4 Wall cabinet, 300mm deep</p> <p>5 Counter, 900mm high, with cabinets below</p>	
Wheel traffic	LIGHT : medium : heavy		
Impacts	NA		
Abrasion	NA		
Easy maintenance	essential:DESIRABLE:unnecessary		
Vibration free	ESSENTIAL:desirable:unnecessary	SPACE DEMANDS (Total Minimum Space Required in sq.m.) : 18.00	
Door sets	wheelchair access	Space Components	Minimum Space Required/Component
Windows	clear, solar control, privacy con-	REGULATIONS AND NOTES:	
	trol		
Internal glazing	nil		

Hospital: Secondary, 25-Bed	ROOM DATA SHEET		Department of Health HEALTH INFRASTRUCTURE SERVICE
Updated Reference: June 1994	Department: EMERGENCY	Room Title: STRETCHER NOOK/SUB-LOBBY	Reference Sheet Number: 25B-CL-RDS1.5A
FUNCTIONAL DESIGN REQUIREMENTS:			
<p>This activity space provides facilities needed for the following activities:</p> <ul style="list-style-type: none"> <li>a. Patient may arrive on foot.</li> <li>b. Patient may arrive in a wheel chair.</li> <li>c. Transfer of patient to/from stretcher trolley, or wheelchair to examining table.</li> </ul> <p>People Involved:</p> <p>Planning Relationships:</p> <ul style="list-style-type: none"> <li>a. Located near Main Entrance of hospital.</li> <li>b. Easily accessible from outside.</li> <li>c. Close to ER Nurse Station.</li> </ul>	EQUIPMENT AND ACCESSORY CHECKLIST	QUANTITY	REMARKS
	Stretcher trolley	1	
	Wheelchair	1	
	FURNITURE AND FIXTURE CHECKLIST	QUANTITY	REMARKS
ADDITIONAL EQUIPMENT AND ENGINEERING TERMINALS	QUANTITY	REMARKS	

Hospital: Secondary, 25-Bed	ROOM DATA SHEET		Department of Health HEALTH INFRASTRUCTURE SERVICE
Updated Reference: June 1994	Department: EMERGENCY	Room Title: STRETCHER NOOK/SUB-LOBBY	Reference Sheet Number: 25B-CL-RDS1.5C
TECHNICAL DESIGN DATA:		LAYOUT OF ROOM AND SPACE COMPONENTS:	
DIRECT SERVICES	DESIGN DATA	<p>Scale 1:100 mts.</p> <p>6.00</p> <p>2.00</p>	
Disposal	NA		
Hot water	NA		
Cold water	NA		
Drainage	NA		
Gas	NA		
Compressed air	NA		
Steam	NA		
Others			
DIRECT DEMANDS ON FLOOR AND WALL			
Loading	NA		
Spillage	NA		
Foot traffic	light : medium : HEAVY		
Wheel traffic	light : medium : HEAVY		
Impacts	NA		
Abrasion	NA		
		<p>Key</p> <p>1 Stretcher trolley      2 Wheelchair</p>	
		SPACE DEMANDS (Total Minimum Space Required in sq.m.) : 12.00	
Easy maintenance	ESSENTIAL:desirable:unnecessary	Space Components:	Minimum Space Required/Component:
Vibration free	ESSENTIAL:desirable:unnecessary		
Door sets	bed, stretcher trolley, wheelchair		
	access		
Windows	nil	REGULATIONS AND NOTES:	
Internal glazing	clear		



Hospital: Secondary, 25-Bed	ROOM DATA SHEET		Department of Health HEALTH INFRASTRUCTURE SERVICE										
Updated Reference: June 1994	Department: EMERGENCY	Room Title: NURSE STATION	Reference Sheet Number: 25B-CL-RDS1.1C										
TECHNICAL DESIGN DATA:		LAYOUT OF ROOM AND SPACE COMPONENTS:											
DIRECT SERVICES	DESIGN DATA	<p>Scale 1:100 mts.</p>											
Disposal	hospital waste category: A												
Hot water	required at sink												
Cold water	required at sink												
Drainage	required at sink												
Gas	NA												
Compressed air	NA												
Steam	NA												
Others													
DIRECT DEMANDS ON FLOOR AND WALL													
Loading	NA												
Spillage	slight : OCCASIONAL : frequent												
Foot traffic	light : medium : HEAVY												
Wheel traffic	light : medium : HEAVY												
Impacts	NA												
Abrasion	NA												
Easy maintenance	ESSENTIAL:desirable:unnecessary												
Vibration free	ESSENTIAL:desirable:unnecessary												
Door sets	nil, open to circulation	<p>Key</p> <table> <tr> <td>1 Chair, upright, stacking</td> <td>6 Wall cabinet for splints</td> </tr> <tr> <td>2 Desk, 750x1200</td> <td>7 Instrument sterilizer</td> </tr> <tr> <td>3 Steel filing cabinet, 500x700</td> <td>8 Wall clock with second hand</td> </tr> <tr> <td>4 Sink in counter</td> <td>9 Instrument table</td> </tr> <tr> <td>5 Counter, 900 mm high, with cabinet below</td> <td>10 Waste receptacle</td> </tr> </table>		1 Chair, upright, stacking	6 Wall cabinet for splints	2 Desk, 750x1200	7 Instrument sterilizer	3 Steel filing cabinet, 500x700	8 Wall clock with second hand	4 Sink in counter	9 Instrument table	5 Counter, 900 mm high, with cabinet below	10 Waste receptacle
1 Chair, upright, stacking	6 Wall cabinet for splints												
2 Desk, 750x1200	7 Instrument sterilizer												
3 Steel filing cabinet, 500x700	8 Wall clock with second hand												
4 Sink in counter	9 Instrument table												
5 Counter, 900 mm high, with cabinet below	10 Waste receptacle												
SPACE DEMANDS (Total Minimum Space Required in sq.m.) : 17.50													
Space Components	Minimum Space Required/Component												
Windows	nil												
REGULATIONS AND NOTES:													
Internal glazing	nil												

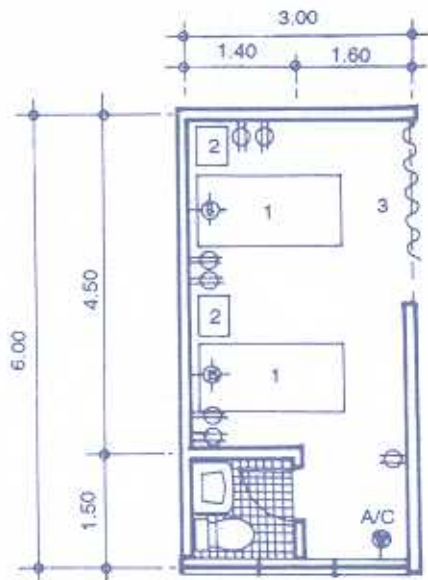
Hospital: Secondary, 25-Bed	ROOM DATA SHEET		Department of Health HEALTH INFRASTRUCTURE SERVICE
Updated Reference: June 1994	Department: EMERGENCY	Room Title: TREATMENT ROOM	Reference Sheet Number: 25B-CL-RDS1.2C
TECHNICAL DESIGN DATA:		LAYOUT OF ROOM AND SPACE COMPONENTS:	
DIRECT SERVICES	DESIGN DATA	<p>Scale 1:100 mts.</p>	
Disposal	hospital waste category: A,B,E,F		
Hot water	NA		
Cold water	NA		
Drainage	NA		
Gas	oxygen outlet		
Compressed air	suction outlet w/vacuum devices		
Steam	NA		
Others			
DIRECT DEMANDS ON FLOOR AND WALL			
Loading	NA	1 Footstool 2 Examining Table 3 Table, 406x508 4 Examining light 5 Hook strip 6 Cubicle curtain and rod 7 Resuscitating apparatus 8 Oxygen Unit 9 Waste receptacle 10 Adult weighing scale 11 Infant weighing scale	
Spillage	slight : occasional : FREQUENT		
Foot traffic	light : medium : HEAVY		
Wheel traffic	light : medium : HEAVY		
Impacts	NA		
Abrasion	NA	SPACE DEMANDS (Total Minimum Space Required in sq.m.) : 12.50	
Easy maintenance	ESSENTIAL:desirable:unnecessary	Space Components	Minimum Space Required/Component
Vibration free	ESSENTIAL:desirable:unnecessary	Treatment Cubicle	6.25 sq.m.
Door sets	nil		
Windows	clear, solar control, privacy con-	REGULATIONS AND NOTES:	
	trol		
Internal glazing	nil		

Hospital: Secondary, 25-Bed	ROOM DATA SHEET		Department of Health HEALTH INFRASTRUCTURE SERVICE
Updated Reference: June 1994	Department: EMERGENCY	Room Title: OBSERVATION ROOM	Reference Sheet Number: 25B-CL-RDS1.3A
FUNCTIONAL DESIGN REQUIREMENTS			
<p>This activity space provides facilities needed for the following activities:</p> <ul style="list-style-type: none"> <li>a. Resident Physician and Nurse observe vital signs of patients at regular intervals.</li> <li>b. Patient is kept in bed in this room to ascertain return of stable and normal vital sign readings.</li> </ul> <p>People Involved:</p> <ul style="list-style-type: none"> <li>1 x Resident Physician</li> <li>1 x Nurse</li> <li>1 x Nursing Attendant</li> <li>2 x Patients</li> </ul> <p>Planning Relationships:</p> <ul style="list-style-type: none"> <li>a. Adjacent to Nurse Station.</li> <li>b. Close to Minor Operating Room.</li> <li>c. Close to Treatment Room.</li> </ul> <p>This activity space provides facilities needed for the delivery of General Patient Care</p>	EQUIPMENT AND ACCESSORY CHECKLIST	QUANTITY	REMARKS
	FURNITURE AND FIXTURE CHECKLIST	QUANTITY	REMARKS
	Hospital bed Table, 406x508 Lavatory Water closet	2 2 1 1	
	ADDITIONAL EQUIPMENT AND ENGINEERING TERMINALS	QUANTITY	REMARKS
Rail, curtain, window Rail, curtain, cubicle Outlet, 10A, 2P, 240V, duplex Outlet, 15A, 2P, 240V, single Bed light	1 1 7 1 2	grounding type, parallel slots grounding type, tandem slots fluorescent	



Hospital: Secondary, 25-Bed	ROOM DATA SHEET		Department of Health: HEALTH INFRASTRUCTURE SERVICE
Updated Reference: June 1994	Department: EMERGENCY	Room Title: TREATMENT ROOM	Reference Sheet Number: 25B-CL-RDS1.2B
TECHNICAL DESIGN DATA:			
ENVIRONMENTAL CONDITIONS	DESIGN DATA	ENVIRONMENTAL CONDITIONS	DESIGN DATA
AIR		LIGHTING AND VISUAL	
Outdoor air temperature (deg. C)	ave. local station temp. reading	General illumination (LUX)	500-750
Room Temperature (deg. C)	25	Night illumination (LUX)	NA
Mechanical ventilation:		Task illumination (LUX)	10,000
Volume (cu m./hr.-person)	12.75	Colour rendering	ESSENTIAL:desirable:unnecessary
Velocity (m./hr.)	900	Standby light	ESSENTIAL:desirable:unnecessary
Pressure:		Emergency light	ESSENTIAL:desirable:unnecessary
Exhaust (psi)	NA	Daylight	essential:DESIRABLE:unnecessary
Inlet (psi)	NA	View out	essential:desirable:UNNECESSARY
% Dust filtration	93% - 99% @ 1 micron	Privacy	essential:DESIRABLE:unnecessary
Humidity (% RH)	50	Black out	essential:desirable:UNNECESSARY
Cooling load (TR)	0.5		
SOUND		SAFETY	
Acceptable sound level (db)	50	Accessible hot surface:	NA
Speech privacy	essential:DESIRABLE:unnecessary	Maximum temperature (deg. C)	NA
Quality which cannot be	tonal impact	Domestic hot water:	NA
tolerated		Maximum temperature (deg. C)	NA
		Access limit	medical staff and patient
		Fire risk	LOW : medium : high
		Other risks	NA



Hospital: Secondary, 25-Bed	ROOM DATA SHEET		Department of Health HEALTH INFRASTRUCTURE SERVICE
Updated Reference: June 1994	Department: EMERGENCY	Room Title: OBSERVATION ROOM	Reference Sheet Number 25B-CL-RDS1.3C
TECHNICAL DESIGN DATA		LAYOUT OF ROOM AND SPACE COMPONENTS	
DIRECT SERVICES	DESIGN DATA	<p>Scale 1:100 mts.</p>  <p>Key</p> <p>1 Hospital bed 2 Table, 406x508 3 Cubicle curtain and rod</p>	
Disposal	hospital waste category: A, F		
Hot water	required at lavatory		
Cold water	required at toilet fixtures		
Drainage	required at toilet fixtures & flr		
Gas	NA		
Compressed air	NA		
Steam	NA		
Others			
DIRECT DEMANDS ON FLOOR AND WALL			
Loading	NA		
Spillage	NA		
Foot traffic	light : MEDIUM : heavy		
Wheel traffic	light : MEDIUM : heavy		
Impacts	NA		
Abrasion	NA		
SPACE DEMANDS (Total Minimum Space Required in sq.m.) : 18.00			
Easy maintenance	ESSENTIAL,desirable,unnecessary	Space Components	Minimum Space Required/Component
Vibration free	ESSENTIAL,desirable,unnecessary	Observation Area	15.75 sq.m.
Door sets	nil	Toilet	2.25 sq.m
Windows	clear, solar control, privacy con-	REGULATIONS AND NOTES	
	trol		
Internal glazing	nil		

Hospital: Secondary, 25-Bed	ROOM DATA SHEET		Department of Health HEALTH INFRASTRUCTURE SERVICE
Updated Reference: June 1994	Department EMERGENCY	Room Title: OBSERVATION ROOM	Reference Sheet Number: 25B-CL-RDS1.3B
TECHNICAL DESIGN DATA:			
ENVIRONMENTAL CONDITIONS	DESIGN DATA	ENVIRONMENTAL CONDITIONS	DESIGN DATA
AIR		LIGHTING AND VISUAL	
Outdoor air temperature (deg. C)	ave. local station temp. reading	General illumination (LUX)	500-750
Room Temperature (deg. C)	25	Night illumination (LUX)	NA
Mechanical ventilation:		Task illumination (LUX)	1,000
Volume (cu.m./hr.-person)	12.75	Colour rendering	ESSENTIAL:desirable:unnecessary
Velocity (m./hr.)	750	Standby light	ESSENTIAL:desirable:unnecessary
Pressure:		Emergency light	ESSENTIAL:desirable:unnecessary
Exhaust (psi)	NA	Daylight	essential:DESIRABLE:unnecessary
Inlet (psi)	NA	View out	essential:desirable:UNNECESSARY
% Dust filtration	93% - 99% @ 1 micron	Privacy	ESSENTIAL:desirable:unnecessary
Humidity (% RH)	50	Black out	essential:desirable:UNNECESSARY
Cooling load (TR)	1.5		
SOUND		SAFETY	
Acceptable sound level (db)	50	Accessible hot surface	NA
Speech privacy	essential:DESIRABLE:unnecessary	Maximum temperature (deg. C)	NA
Quality which cannot be	tonal impact	Domestic hot water:	lavatory
tolerated		Maximum temperature (deg. C)	70
		Access limit	medical staff and patient
		Fire risk	LOW : medium : high
		Other risks	NA

Hospital: Secondary, 25-Bed	ROOM DATA SHEET		Department of Health HEALTH INFRASTRUCTURE SERVICE
Updated Reference: June 1994	Department: EMERGENCY	Room Title: STRETCHER NOOK/SUB-LOBBY	Reference Sheet Number: 25B-CL-RDS1.5B
TECHNICAL DESIGN DATA:			
ENVIRONMENTAL CONDITIONS	DESIGN DATA	ENVIRONMENTAL CONDITIONS	DESIGN DATA
AIR		LIGHTING AND VISUAL	
Outdoor air temperature (deg. C)	ave. local station temp. reading	General illumination (LUX)	150
Room Temperature (deg. C)	atmospheric	Night illumination (LUX)	NA
Mechanical ventilation:		Task illumination (LUX)	NA
Volume (cu.m./hr.-person)	30	Colour rendering	essential:desirable:UNNECESSARY
Velocity (m./hr.)	900	Standby light	ESSENTIAL:desirable:unnecessary
Pressure:		Emergency light	ESSENTIAL:desirable:unnecessary
Exhaust (psi)	NA	Daylight	essential:DESIRABLE:unnecessary
Inlet (psi)	NA	View out	essential:desirable:UNNECESSARY
% Dust filtration	NA	Privacy	essential:desirable:UNNECESSARY
Humidity (% RH)	NA	Black out	essential:desirable:UNNECESSARY
Cooling load (TR)	NA		
SOUND		SAFETY	
Acceptable sound level (db)	60	Accessible hot surface:	NA
Speech privacy	essential:desirable:UNNECESSARY	Maximum temperature (deg. C)	NA
Quality which cannot be	NA	Domestic hot water:	NA
tolerated		Maximum temperature (deg. C)	NA
		Access: limit	general public and hospital staff
		Fire risk	LOW : medium : high
		Other risks	NA

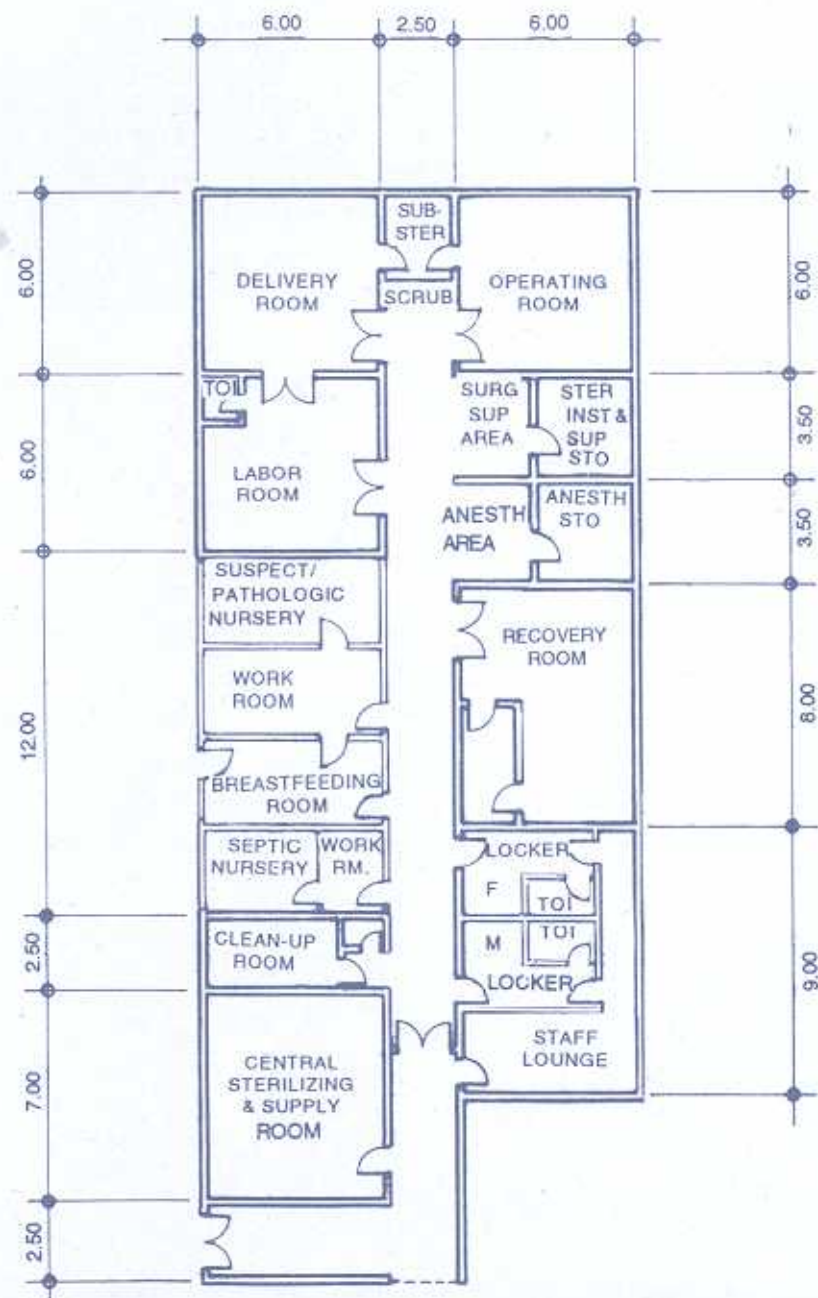




Hospital: Secondary, 25-Bed	DEPARTMENT DATA SHEET	Department of Health HEALTH INFRASTRUCTURE SERVICE
Updated Reference: June 1994	Department: SURGICAL/DELIVERY SERVICE COMPLEX	Reference Sheet Number: 25B-CL-DDS2

LAYOUT PER DEPARTMENT SHOWING ROOMS AND SPACE COMPONENTS:

Scale: 1:250 mts.



Hospital: Secondary, 25-Bed	ROOM DATA SHEET		Department of Health HEALTH INFRASTRUCTURE SERVICE
Updated Reference: June 1994	Department: SURGICAL/DELIVERY	Room Title: OPERATING ROOM	Reference Sheet Number: 25B-CL-RDS2.1A
FUNCTIONAL DESIGN REQUIREMENTS:			
<p>This activity space provides facilities needed for the following activities:</p> <ul style="list-style-type: none"> <li>a. Patient arrives on a stretcher trolley.</li> <li>b. Patient is transferred from the stretcher trolley to operating table.</li> <li>c. Anesthesia is administered.</li> <li>d. Clinical handwashing.</li> <li>e. Use of diagnostic equipment.</li> <li>f. Surgical operation is performed.</li> </ul>	EQUIPMENT AND ACCESSORY CHECKLIST	QUANTITY	REMARKS
	Double x-ray film illuminator Aspirator Anesthesia unit Clock Operating light Anesthesia machine UV light Oxygen unit	1 1 1 1 1 1 1 1	
	FURNITURE AND FIXTURE CHECKLIST	QUANTITY	REMARKS
<p>People Involved:</p> <ul style="list-style-type: none"> <li>2 x Resident Physicians</li> <li>1 x Nurse</li> <li>1 x Nursing Attendant</li> <li>1 x Patient</li> <li>1 x Utility Worker</li> </ul>	Double basin stand Instrument table Mayo table Operating table Footstool Kick bucket Sponge rack Single basin stand Anesthetist's stool Anesthetist's table Adjustable stool Irrigator stand Pack table	1 2 1 1 2 2 1 1 1 1 2 1 1	
	ADDITIONAL EQUIPMENT AND ENGINEERING TERMINALS	QUANTITY	REMARKS
<p>Planning Relationships:</p> <ul style="list-style-type: none"> <li>a. Adjacent to Sub-sterilizing Room.</li> <li>b. Adjacent to Scrub-up.</li> <li>c. Close to Delivery Room.</li> </ul>	Outlet, intercom Shades  Outlet, 10A, 2P, 240V Outlet, 15A, 2P, 240V  Isolation monitor Ground terminal Smoke detector Fire alarm station	1 1  7 2  1 5 1 1	hands free type, * light proof for special eye or dark room surgery grounding type, duplex type, * grounding type, tandem slots, * 1.6 above floor duplex, *
	<p>This activity space provides facilities needed for the delivery of Critical Patient Care.</p>		

Hospital: Secondary, 25-Bed	ROOM DATA SHEET		Department of Health HEALTH INFRASTRUCTURE SERVICE
Updated Reference: June 1994	Department: SURGICAL/DELIVERY	Room Title: OPERATING ROOM	Reference Sheet Number: 25B-CL-RDS2.1B
TECHNICAL DESIGN DATA			
ENVIRONMENTAL CONDITIONS	DESIGN DATA	ENVIRONMENTAL CONDITIONS	DESIGN DATA
AIR		LIGHTING AND VISUAL	
Outdoor air temperature (deg. C)	ave. local station temp. reading	General illumination (LUX)	750-1,000
Room Temperature (deg. C)	25	Night illumination (LUX)	NA
Mechanical ventilation:		Task illumination (LUX)	20,000-40,000
Volume (cu.m./hr.-person)	12.75	Colour rendering	ESSENTIAL:desirable:unnecessary
Velocity (m./hr.)	900	Standby light	ESSENTIAL:desirable:unnecessary
Pressure:		Emergency light	ESSENTIAL:desirable:unnecessary
Exhaust (psi)	NA	Daylight	essential:desirable:UNNECESSARY
Inlet (psi)	NA	View out	essential:desirable:UNNECESSARY
% Dust filtration	93% - 99% @ 1 micron	Privacy	ESSENTIAL:desirable:unnecessary
Humidity (% RH)	50	Black out	ESSENTIAL:desirable:unnecessary
Cooling load (TR)	3.0		
SOUND		SAFETY	
Acceptable sound level (db)	40	Accessible hot surface:	NA
Speech privacy	ESSENTIAL:desirable:unnecessary	Maximum temperature (deg. C)	NA
Quality which cannot be	tonal impact	Domestic hot water:	NA
tolerated		Maximum temperature (deg. C)	NA
		Access limit	medical staff and patient
		Fire risk	low : MEDIUM : high
		Other risks	NA

Hospital: Secondary, 25-Bed	ROOM DATA SHEET		Department of Health HEALTH INFRASTRUCTURE SERVICE
Updated Reference: June 1994	Department: SURGICAL/DELIVERY	Room Title: DELIVERY ROOM	Reference Sheet Number: 25B-CL-RDS2.2B
TECHNICAL DESIGN DATA:			
ENVIRONMENTAL CONDITIONS	DESIGN DATA	ENVIRONMENTAL CONDITIONS	DESIGN DATA
AIR		LIGHTING AND VISUAL	
Outdoor air temperature (deg. C)	ave. local station temp. reading	General illumination (LUX)	250-500
Room Temperature (deg. C)	25	Night illumination (LUX)	NA
Mechanical ventilation:		Task illumination (LUX)	10,000-20,000
Volume (cu.m./hr.-person)	12.75	Colour rendering	ESSENTIAL:desirable:unnecessary
Velocity (m./hr.)	900	Standby light	ESSENTIAL:desirable:unnecessary
Pressure:		Emergency light	ESSENTIAL:desirable:unnecessary
Exhaust (psi)	NA	Daylight	essential:desirable:UNNECESSARY
Inlet (psi)	NA	View out	essential:desirable:UNNECESSARY
% Dust filtration	93% - 99% @ 1 micron	Privacy	ESSENTIAL:desirable:unnecessary
Humidity (% RH)	50	Black out	essential:desirable:UNNECESSARY
Cooling load (TR)	3.0		
SOUND		SAFETY	
Acceptable sound level (db)	40	Accessible hot surface:	NA
Speech privacy	ESSENTIAL:desirable:unnecessary	Maximum temperature (deg. C)	NA
Quality which cannot be	tonal impact	Domestic hot water:	NA
tolerated		Maximum temperature (deg. C)	NA
		Access limit	medical staff and patient
		Fire risk	low : MEDIUM : high
		Other risks	NA



Hospital: Secondary, 25-Bed	ROOM DATA SHEET		Department of Health HEALTH INFRASTRUCTURE SERVICE
Updated Reference: June 1994	Department: SURGICAL/DELIVERY	Room Title: OPERATING ROOM	Reference Sheet Number: 25B-CL-RDS2,1C
TECHNICAL DESIGN DATA:		LAYOUT OF ROOM AND SPACE COMPONENTS:	
DIRECT SERVICES	DESIGN DATA	<p>Scale 1:100 mts.</p> <p>6.00</p> <p>6.00</p>	
Disposal	hospital waste category: A,B,E,F		
Hot water	NA		
Cold water	NA		
Drainage	provide floor drain		
Gas	oxygen & nitrous oxide outlet		
Compressed air	suction outlet w/vacuum devices		
Steam	NA		
Others			
DIRECT DEMANDS ON FLOOR AND WALL			
Loading	NA		
Spillage	slight : OCCASIONAL : frequent		
Foot traffic	light : medium : HEAVY		
Wheel traffic	light : medium : HEAVY		
Impacts	NA		
Abrasion	NA		
Easy maintenance	ESSENTIAL:desirable:unnecessary		
Vibration free	ESSENTIAL:desirable:unnecessary		
Door sets	operating table, stretcher trolley		
	access		
Windows	clear, solar control, privacy con-		
	trol		
Internal glazing	nil		

1 Clock	14 Irrigator stand
2 Aspirator below view box	15 Pack table
3 Double x-ray film illuminator	16 Anesthetist's stool
4 Operating light	17 Anesthetist's table
5 Double basin stand	18 Anesthesia unit
6 instrument table	19 Calling station
7 Mayo table	20 Adjustable open shelving 500mm deep
8 Operating table	21 Door with vision panel
9 Footstool	22 Anesthesia machine
10 Kick bucket	23 UV light
11 Sponge rack	24 Oxygen unit
12 Single basin stand	25 Airconditioning unit
13 Adjustable stool	

SPACE DEMANDS (Total Minimum Space Required in sq.m.) : 36.00	
REGULATIONS AND NOTES:	
1. Glazed wall tiles are desirable up to ceiling height.	
2. Provision for Janitor's closet at Surgical Suite is essential.	

Hospital: Secondary, 25-Bed	ROOM DATA SHEET		Department of Health HEALTH INFRASTRUCTURE SERVICE
Updated Reference: June 1994	Department: SURGICAL/DELIVERY	Room Title: DELIVERY ROOM	Reference Sheet Number: 25B-CL-RDS2.2A

FUNCTIONAL DESIGN REQUIREMENTS:			
<p>This activity space provides facilities needed for the following activities:</p> <ul style="list-style-type: none"> <li>a. Patient arrives in a stretcher trolley.</li> <li>b. Transfer patient from trolley to delivery table.</li> <li>c. Clinical handwashing.</li> <li>d. Administering of anesthesia.</li> <li>e. Normal delivery of a child by the patient.</li> </ul>	EQUIPMENT AND ACCESSORY CHECKLIST	QUANTITY	REMARKS
	Portable emergency light Aspirator Obstetrical light Clock Anesthesia unit Kick basin	1 1 1 1 1 3	
	FURNITURE AND FIXTURE CHECKLIST	QUANTITY	REMARKS
<p>People Involved:</p> <ul style="list-style-type: none"> <li>1 x Maternity Patient</li> <li>1 x Resident Physician</li> <li>1 x Nurse</li> <li>1 x Nursing Attendant</li> </ul>	Instrument table Mayo table Anesthetist's table Anesthetist's stool Heated bassinet Delivery table Adjustable stool Single basin stand	1 1 1 1 1 1 1 1	
	ADDITIONAL EQUIPMENT AND ENGINEERING TERMINALS	QUANTITY	REMARKS
<p>Planning Relationships:</p> <ul style="list-style-type: none"> <li>a. Close to Operating Room.</li> <li>b. Adjacent to Labor Room.</li> <li>c. Adjacent to Sub-sterilizing Room and Scrub-up.</li> </ul>	Rail, curtain, window Outlet, intercom Ground terminal Outlet, 10A, 2P, 240V, duplex Outlet, 15A, 2P, 240V, single Isolation monitor Fixed emergency light Smoke detector Fire alarm station	1 1 5 7 2 1 2 1 1	hands free, wall mounted type* duplex, * grounding type, locking type, * grounding type, tandem slots* 1.6m above floor
	<p>This activity space provides facilities needed for the delivery of Critical Patient Care.</p>		

Hospital: Secondary, 25-Bed	ROOM DATA SHEET		Department of Health HEALTH INFRASTRUCTURE SERVICE
Updated Reference: June 1994	Department: SURGICAL/DELIVERY	Room Title: DELIVERY ROOM	Reference Sheet Number: 25B-CL-RDS2.2C

TECHNICAL DESIGN DATA:		LAYOUT OF ROOM AND SPACE COMPONENTS:																			
DIRECT SERVICES	DESIGN DATA	<p>Scale 1:100 mts.</p>																			
Disposal	hospital waste category: A,B,E,F																				
Hot water	NA																				
Cold water	NA																				
Drainage	NA																				
Gas	oxygen & nitrous oxide outlet																				
Compressed air	suction outlet w/vacuum devices																				
Steam	NA																				
Others																					
DIRECT DEMANDS ON FLOOR AND WALL																					
Loading	NA	<p>Key</p> <table border="0"> <tr> <td>1 Aspirator</td> <td>10 Mayo table</td> </tr> <tr> <td>2 Obstetrical light</td> <td>11 Anesthetist's table</td> </tr> <tr> <td>3 Portable emergency light</td> <td>12 Anesthetist's stool</td> </tr> <tr> <td>4 Anesthesia unit</td> <td>13 Heated bassinet</td> </tr> <tr> <td>5 Kick basin</td> <td>14 Delivery table</td> </tr> <tr> <td>6 Calling station</td> <td>15 Adjustable stool</td> </tr> <tr> <td>7 Fixed emergency light</td> <td>16 Single basin stand</td> </tr> <tr> <td>8 Clock</td> <td>17 Airconditioning unit</td> </tr> <tr> <td>9 Instrument table</td> <td>18 Adjustable open shelving</td> </tr> </table>		1 Aspirator	10 Mayo table	2 Obstetrical light	11 Anesthetist's table	3 Portable emergency light	12 Anesthetist's stool	4 Anesthesia unit	13 Heated bassinet	5 Kick basin	14 Delivery table	6 Calling station	15 Adjustable stool	7 Fixed emergency light	16 Single basin stand	8 Clock	17 Airconditioning unit	9 Instrument table	18 Adjustable open shelving
1 Aspirator	10 Mayo table																				
2 Obstetrical light	11 Anesthetist's table																				
3 Portable emergency light	12 Anesthetist's stool																				
4 Anesthesia unit	13 Heated bassinet																				
5 Kick basin	14 Delivery table																				
6 Calling station	15 Adjustable stool																				
7 Fixed emergency light	16 Single basin stand																				
8 Clock	17 Airconditioning unit																				
9 Instrument table	18 Adjustable open shelving																				
Spillage	slight : OCCASIONAL : frequent																				
Foot traffic	light : medium : HEAVY																				
Wheel traffic	light : medium : HEAVY																				
Impacts	NA																				
Abrasion	NA																				
Easy maintenance	ESSENTIAL/desirable/unnecessary																				
Vibration free	ESSENTIAL/desirable/unnecessary																				
Door sets	delivery table, stretcher trolley,	SPACE DEMANDS (Total Minimum Space Required in sq.m.) : 36.00																			
	wheelchair access	Space Components	Minimum Space Required/Component																		
Windows	clear, solar control, privacy con-	REGULATIONS AND NOTES:																			
	trol																				
Internal glazing	nil																				



Hospital: Secondary, 25-Bed	ROOM DATA SHEET		Department of Health HEALTH INFRASTRUCTURE SERVICE
Updated Reference: June 1994	Department: SURGICAL/DELIVERY	Room Title: LABOR ROOM	Reference Sheet Number: 25B-CL-RDS2.3A

FUNCTIONAL DESIGN REQUIREMENTS:																										
<p>This activity space provides facilities needed for the following activities:</p> <ul style="list-style-type: none"> <li>a. Patient arrives on foot.</li> <li>b. Patient may arrive in a wheelchair or on a stretcher trolley.</li> <li>c. Transfer patient from wheelchair or stretcher trolley to obstetrical bed.</li> <li>d. Clinical handwashing.</li> <li>e. Patient undergoes labor prior to delivery.</li> <li>f. Use of toilet facilities.</li> </ul> <p>People Involved:</p> <ul style="list-style-type: none"> <li>1 x Physician</li> <li>1 x Nurse</li> <li>1 x Nursing Attendant</li> <li>1 x Maternity Patient</li> </ul> <p>Planning Relationships:</p> <ul style="list-style-type: none"> <li>a. Adjacent to Delivery Room.</li> <li>b. Close to Operating Room, Scrub-up, and Sub-sterilizing Room.</li> </ul> <p>This activity space provides facilities needed for the delivery of General Patient Care.</p>	<p>EQUIPMENT AND ACCESSORY CHECKLIST</p> <table border="1"> <tr> <th></th> <th>QUANTITY</th> <th>REMARKS</th> </tr> <tr> <td>Examining light</td> <td>1</td> <td></td> </tr> <tr> <td>Clock</td> <td>1</td> <td></td> </tr> <tr> <td>Bed light</td> <td>3</td> <td></td> </tr> <tr> <td>Waste paper receptacle</td> <td>1</td> <td></td> </tr> </table>		QUANTITY	REMARKS	Examining light	1		Clock	1		Bed light	3		Waste paper receptacle	1											
		QUANTITY	REMARKS																							
	Examining light	1																								
	Clock	1																								
	Bed light	3																								
	Waste paper receptacle	1																								
<p>FURNITURE AND FIXTURE CHECKLIST</p> <table border="1"> <tr> <th></th> <th>QUANTITY</th> <th>REMARKS</th> </tr> <tr> <td>Obstetrical bed</td> <td>3</td> <td></td> </tr> <tr> <td>Bedside cabinet</td> <td>3</td> <td></td> </tr> <tr> <td>Instrument table</td> <td>1</td> <td></td> </tr> <tr> <td>Footstool</td> <td>3</td> <td></td> </tr> <tr> <td>Chair, upright, stacking</td> <td>3</td> <td></td> </tr> <tr> <td>Lavatory</td> <td>2</td> <td></td> </tr> <tr> <td>Water closet</td> <td>1</td> <td></td> </tr> </table>		QUANTITY	REMARKS	Obstetrical bed	3		Bedside cabinet	3		Instrument table	1		Footstool	3		Chair, upright, stacking	3		Lavatory	2		Water closet	1			
	QUANTITY	REMARKS																								
Obstetrical bed	3																									
Bedside cabinet	3																									
Instrument table	1																									
Footstool	3																									
Chair, upright, stacking	3																									
Lavatory	2																									
Water closet	1																									
<p>ADDITIONAL EQUIPMENT AND ENGINEERING TERMINALS</p> <table border="1"> <tr> <th></th> <th>QUANTITY</th> <th>REMARKS</th> </tr> <tr> <td>Rail, curtain, window</td> <td>1</td> <td></td> </tr> <tr> <td>Nurses' call station</td> <td>3</td> <td></td> </tr> <tr> <td>Outlet, 10A, 2P, 240V, duplex</td> <td>9</td> <td>grounding types, parallel slots</td> </tr> <tr> <td>Outlet, 15A, 2P, 240V, single</td> <td>1</td> <td>grounding type, tandem slots</td> </tr> </table>		QUANTITY	REMARKS	Rail, curtain, window	1		Nurses' call station	3		Outlet, 10A, 2P, 240V, duplex	9	grounding types, parallel slots	Outlet, 15A, 2P, 240V, single	1	grounding type, tandem slots											
	QUANTITY	REMARKS																								
Rail, curtain, window	1																									
Nurses' call station	3																									
Outlet, 10A, 2P, 240V, duplex	9	grounding types, parallel slots																								
Outlet, 15A, 2P, 240V, single	1	grounding type, tandem slots																								



Hospital: Secondary, 25-Bed	ROOM DATA SHEET		Department of Health HEALTH INFRASTRUCTURE SERVICE
Updated Reference: June 1994	Department: SURGICAL/DELIVERY	Room Title: LABOR ROOM	Reference Sheet Number: 25B-CL-RDS2.38
TECHNICAL DESIGN DATA:			
ENVIRONMENTAL CONDITIONS	DESIGN DATA	ENVIRONMENTAL CONDITIONS	DESIGN DATA
AIR:		LIGHTING AND VISUAL	
Outdoor air temperature (deg. C)	ave. local station temp. reading	General illumination (LUX)	250-500
Room Temperature (deg. C)	25	Night illumination (LUX)	NA
Mechanical ventilation:		Task illumination (LUX)	NA
Volume (cu.m./hr.-person)	12.75	Colour rendering	ESSENTIAL:desirable:unnecessary
Velocity (m./hr.)	900	Standby light	essential:DESIRABLE:unnecessary
Pressure:		Emergency light	ESSENTIAL:desirable:unnecessary
Exhaust (psi)	NA	Daylight	essential:DESIRABLE:unnecessary
Inlet (psi)	NA	View out	essential:desirable:UNNECESSARY
% Dust filtration	93% - 99% @ 1 micron	Privacy	ESSENTIAL:desirable:unnecessary
Humidity (% RH)	50	Black out	essential:desirable:UNNECESSARY
Cooling load (TR)	3.0		
SOUND		SAFETY	
Acceptable sound level (db)	60	Accessible hot surface:	NA
Speech privacy	essential:DESIRABLE:unnecessary	Maximum temperature (deg. C)	NA
Quality which cannot be	tonal impact	Domestic hot water:	at lavatory
tolerated		Maximum temperature (deg. C)	70
		Access limit	medical staff and patient
		Fire risk	LOW : medium : high
		Other risks	NA

Hospital: Secondary, 25-Bed	ROOM DATA SHEET		Department of Health HEALTH INFRASTRUCTURE SERVICE
Updated Reference: June 1994	Department: SURGICAL/DELIVERY	Room Title: LABOR ROOM	Reference Sheet Number: 25B-CL-RDS2 3C

TECHNICAL DESIGN DATA:		LAYOUT OF ROOM AND SPACE COMPONENTS:													
DIRECT SERVICES	DESIGN DATA	<p>Scale 1:100 mts.</p>													
Disposal	hospital waste category: A,B,E,F														
Hot water	required at lavatory														
Cold water	req'd at lavatory and toilet fixtures														
Drainage	req'd at lavatory, toi. fixtures and fir.														
Gas	oxygen outlet														
Compressed air	NA														
Steam	NA														
Others															
DIRECT DEMANDS ON FLOOR AND WALL				<p>Key</p> <table border="0"> <tr> <td>1 Examining light</td> <td>7 Instrument table</td> </tr> <tr> <td>2 Lavatory</td> <td>8 Footstool</td> </tr> <tr> <td>3 Clock</td> <td>9 Chair, upright, stacking</td> </tr> <tr> <td>4 Bed light</td> <td>10 Nurses' calling station with duplex receptacle</td> </tr> <tr> <td>5 Obstetrical bed</td> <td>11 Waste paper receptacle</td> </tr> <tr> <td>6 Bedside cabinet</td> <td></td> </tr> </table>		1 Examining light	7 Instrument table	2 Lavatory	8 Footstool	3 Clock	9 Chair, upright, stacking	4 Bed light	10 Nurses' calling station with duplex receptacle	5 Obstetrical bed	11 Waste paper receptacle
1 Examining light	7 Instrument table														
2 Lavatory	8 Footstool														
3 Clock	9 Chair, upright, stacking														
4 Bed light	10 Nurses' calling station with duplex receptacle														
5 Obstetrical bed	11 Waste paper receptacle														
6 Bedside cabinet															
Loading	NA	SPACE DEMANDS (Total Minimum Space Required in sq.m.) : 36.00													
Spillage	slight : occasional : FREQUENT														
Foot traffic	light : medium : HEAVY														
Wheel traffic	light : medium : HEAVY														
Impacts	NA														
Abrasion	NA														
Easy maintenance	ESSENTIAL:desirable:unnecessary														
Vibration free	ESSENTIAL:desirable:unnecessary														
Door sets	obstetrical bed, stretcher trolley,	Space Components	Minimum Space Required/Component												
	wheelchair access.	Labor Room	33.76 sq.m.												
Windows	clear, solar control, privacy con-	Toilet	2.24 sq.m.												
	trol	REGULATIONS AND NOTES.													
Internal glazing	nil														

Hospital: Secondary, 25-Bed	ROOM DATA SHEET		Department of Health HEALTH INFRASTRUCTURE SERVICE
Updated Reference: June 1994	Department: SURGICAL/DELIVERY	Room Title: SCRUB-UP AREA	Reference Sheet Number: 25B-CL-RDS2.4C
TECHNICAL DESIGN DATA:		LAYOUT OF ROOM AND SPACE COMPONENTS:	
DIRECT SERVICES	DESIGN DATA	<p>Scale 1:100 mts.</p>	
Disposal	hospital waste category: A		
Hot water	required at sink		
Cold water	required at sink		
Drainage	required at sink and floor		
Gas	NA		
Compressed air	NA		
Steam	NA		
Others			
DIRECT DEMANDS ON FLOOR AND WALL			
Loading	NA	1 Scrub sink with gooseneck spout and knee control	
Spillage	slight : occasional : FREQUENT	2 Clock	
Foot traffic	light : medium : HEAVY	3 Shelves over scrub sink	
Wheel traffic	light : medium : HEAVY	4 Soap dispenser	
Impacts	NA	5 Floor drain	
Abrasion	NA	SPACE DEMANDS (Total Minimum Space Required in sq.m.) : 8.75	
Easy maintenance	ESSENTIAL/desirable/unnecessary	Space Components	Minimum Space Required/Component
Vibration free	ESSENTIAL/desirable/unnecessary		
Door sets	nil, open to circulation		
Windows	nil	REGULATIONS AND NOTES:	
Internal glazing	nil		



Hospital Secondary, 25-Bed	ROOM DATA SHEET		Department of Health HEALTH INFRASTRUCTURE SERVICE
Updated Reference: June 1994	Department: SURGICAL/DELIVERY	Room Title: SCRUB-UP AREA	Reference Sheet Number: 25B-CL-RDS2.4B
TECHNICAL DESIGN DATA:			
ENVIRONMENTAL CONDITIONS	DESIGN DATA	ENVIRONMENTAL CONDITIONS	DESIGN DATA
AIR		LIGHTING AND VISUAL	
Outdoor air temperature (deg. C)	ave. local station temp. reading	General illumination (LUX)	500
Room Temperature (deg. C)	25	Night illumination (LUX)	NA
Mechanical ventilation:		Task illumination (LUX)	NA
Volume (cu.m./hr.-person)	12.75	Colour rendering	ESSENTIAL:desirable:unnecessary
Velocity (m./hr.)	900	Standby light	ESSENTIAL:desirable:unnecessary
Pressure:		Emergency light	essential:DESIRABLE:unnecessary
Exhaust (psi)	NA	Daylight	essential:desirable:UNNECESSARY
Inlet (psi)	NA	View out	essential:desirable:UNNECESSARY
% Dust filtration	93% - 99% @ 1 micron	Privacy	essential:desirable:UNNECESSARY
Humidity (% RH)	50	Black out	essential:desirable:UNNECESSARY
Cooling load (TR)	0.5		
SOUND		SAFETY	
Acceptable sound level (db)	60	Accessible hot surface	NA
Speech privacy	essential:desirable:UNNECESSARY	Maximum temperature (deg. C)	NA
Quality which cannot be	tonal impact	Domestic hot water:	at scrub sink
tolerated		Maximum temperature (deg. C)	70
		Access limit	medical staff
		Fire risk	LOW - medium - high
		Other risks	NA



Hospital: Secondary, 25-Bed	ROOM DATA SHEET		Department of Health HEALTH INFRASTRUCTURE SERVICE
Updated Reference: June 1994	Department: SURGICAL/DELIVERY	Room Title: SUB-STERILIZING ROOM	Reference Sheet Number: 25B-CL-RDS02.5B
TECHNICAL DESIGN DATA:			
ENVIRONMENTAL CONDITIONS	DESIGN DATA	ENVIRONMENTAL CONDITIONS	DESIGN DATA
AIR		LIGHTING AND VISUAL	
Outdoor air temperature (deg. C)	ave. local station temp. reading	General illumination (LUX)	500
Room Temperature (deg. C)	25	Night illumination (LUX)	NA
Mechanical ventilation:		Task illumination (LUX)	NA
Volume (cu. m./hr.-person)	12.75	Colour rendering	ESSENTIAL:desirable:unnecessary
Velocity (m./hr.)	900	Standby light	ESSENTIAL:desirable:unnecessary
Pressure:		Emergency light	ESSENTIAL:desirable:unnecessary
Exhaust (psi)		Daylight	essential:desirable:UNNECESSARY
Inlet (psi)		View out	essential:desirable:UNNECESSARY
% Dust filtration	93% - 99% @ 1 micron	Privacy	essential:DESIRABLE:unnecessary
Humidity (% RH)	50	Black out	essential:desirable:UNNECESSARY
Cooling load (TR)	0.5		
SOUND		SAFETY	
Acceptable sound level (db)	50	Accessible hot surface:	instrument sterilizer
Speech privacy	essential:DESIRABLE:unnecessary	Maximum temperature (deg. C)	100
Quality which cannot be	tonal impact	Domestic hot water:	at sink
tolerated		Maximum temperature (deg. C)	70
		Access limit	medical staff
		Fire risk	LOW : medium : high
		Other risks	NA

Hospital: Secondary, 25-Bed	ROOM DATA SHEET		Department of Health HEALTH INFRASTRUCTURE SERVICE
Updated Reference: June 1994	Department SURGICAL/DELIVERY	Room Title: SUB-STERILIZING ROOM	Reference Sheet Number: 25B-CL-RDSO2.5A
FUNCTIONAL DESIGN REQUIREMENTS:			
<p>This activity space provides facilities needed for the following activities:</p> <ul style="list-style-type: none"> <li>a. Preparation of packed surgical instruments.</li> <li>b. Storing and retrieving of instruments from cabinets.</li> <li>c. Minor sterilizing works.</li> <li>d. Hand washing and other clean-up activities.</li> </ul> <p>People Involved:</p> <ul style="list-style-type: none"> <li>1 x Physician</li> <li>1 x Nurse or Nursing Attendant</li> </ul> <p>Planning Relationships:</p> <ul style="list-style-type: none"> <li>a. Adjacent to Delivery Room.</li> <li>b. Adjacent to Operating Room.</li> <li>c. Adjacent to Scrub-up Area.</li> </ul>	EQUIPMENT AND ACCESSORY CHECKLIST	QUANTITY	REMARKS
	Small instrument sterilizer	1	
	FURNITURE AND FIXTURE CHECKLIST	QUANTITY	REMARKS
	Sink and drainboard Counter, 900 mm high, open below	1	
	ADDITIONAL EQUIPMENT AND ENGINEERING TERMINALS	QUANTITY	REMARKS
	Rail, curtain, window Outlet, 10A, 2P, 240V	1 1	grounding type, duplex, locking type, hospital grade

Hospital: Secondary, 25-Bed	ROOM DATA SHEET		Department of Health HEALTH INFRASTRUCTURE SERVICE
Updated Reference: June 1994	Department: SURGICAL/DELIVERY	Room Title: SUB-STERILIZING ROOM	Reference Sheet Number: 25B-CL-RDS2.5C
TECHNICAL DESIGN DATA:		LAYOUT OF ROOM AND SPACE COMPONENTS:	
DIRECT SERVICES	DESIGN DATA	<p>Scale 1:100 mts.</p>	
Disposal	hospital waste category: A		
Hot water	required at sink		
Cold water	required at sink		
Drainage	required at sink		
Gas	NA		
Compressed air	NA		
Steam	NA		
Others			
DIRECT DEMANDS ON FLOOR AND WALL			
Loading	LIGHT : medium : heavy		
Spillage	slight : OCCASIONAL : frequent		
Foot traffic	light : MEDIUM : heavy		
Wheel traffic	NA		
Impacts	NA		
Abrasion	NA	SPACE DEMANDS (Total Minimum Space Required in sq.m.) : 6.25	
Easy maintenance	ESSENTIAL:desirable:unnecessary	Space Components:	Minimum Space Required/Component
Vibration free	ESSENTIAL:desirable:unnecessary		
Door sets	ordinary access door with vision		
	panel		
Windows	clear, solar control	REGULATIONS AND NOTES:	
Internal glazing	clear		

Hospital: Secondary, 25-Bed	ROOM DATA SHEET		Department of Health HEALTH INFRASTRUCTURE SERVICE
Updated Reference: June 1994	Department: SURGICAL/DELIVERY	Room Title: ANESTHESIA STORAGE	Reference Sheet Number: 25B-CL-RDS2.7B
TECHNICAL DESIGN DATA			
ENVIRONMENTAL CONDITIONS		DESIGN DATA	
ENVIRONMENTAL CONDITIONS		DESIGN DATA	
AIR		LIGHTING AND VISUAL	
Outdoor air temperature (deg. C)	ave. local station temp. reading	General illumination (LUX)	250
Room Temperature (deg. C)	atmospheric	Night illumination (LUX)	NA
Mechanical ventilation:		Task illumination (LUX)	NA
Volume (cu m /hr -person)	12.75	Colour rendering	ESSENTIAL;desirable;unnecessary
Velocity (m./hr.)	900	Standby light	ESSENTIAL;desirable;unnecessary
Pressure:		Emergency light	ESSENTIAL;desirable;unnecessary
Exhaust (psi)	NA	Daylight	essential;desirable;UNNECESSARY
Inlet (psi)	NA	View out	essential;desirable;UNNECESSARY
% Dust filtration	NA	Privacy	essential;desirable;UNNECESSARY
Humidity (% RH)	NA	Black out	essential;desirable;UNNECESSARY
Cooling load (TR)	NA		
SOUND		SAFETY	
Acceptable sound level (db)	60	Accessible hot surface	NA
Speech privacy	essential;desirable;UNNECESSARY	Maximum temperature (deg. C)	NA
Quality which cannot be	NA	Domestic hot water:	at sink
tolerated		Maximum temperature (deg. C)	70
		Access limit	medical staff
		Fire risk	low : medium : HIGH
		Other risks	NA



Hospital: Secondary, 25-Bed	ROOM DATA SHEET		Department of Health HEALTH INFRASTRUCTURE SERVICE
Updated Reference: June 1994	Department: SURGICAL/DELIVERY	Room Title: ANESTHESIA STORAGE	Reference Sheet Number: 25B-CL-RDS2.7C
TECHNICAL DESIGN DATA:		LAYOUT OF ROOM AND SPACE COMPONENTS:	
DIRECT SERVICES	DESIGN DATA	<p>Scale 1:100 mts.</p>	
Disposal	hospital waste category: A,G		
Hot water	required at sink		
Cold water	required at sink		
Drainage	required at sink		
Gas	NA		
Compressed air	NA		
Steam	NA		
Others			
DIRECT DEMANDS ON FLOOR AND WALL			
Loading	light : MEDIUM : heavy	1 Shelving, 450mm wide	
Spillage	slight : OCCASIONAL : frequent	2 Sink with gooseneck spout and knee or elbow control	
Foot traffic	light : MEDIUM : heavy	3 Door with vision panel	
Wheel traffic	NA	4 Explosion proof light fixtures (fluorescent)	
Impacts	NA	5 Partition with glass in upper panel	
Abrasion	NA	SPACE DEMANDS (Total Minimum Space Required in sq.m.) : 12.25	
Easy maintenance	ESSENTIAL-desirable-unnecessary	Space Components	Minimum Space Required/Component
Vibration free	ESSENTIAL-desirable-unnecessary		
Door sets	ordinary access door with vision panel		
Windows	clear, solar control	REGULATIONS AND NOTES:	
Internal glazing	clear	Class I Div. 1 Hazardous location, Indirect lighting from outside or explosion proof fixtures recommended.	

Hospital: Secondary, 25-Bed	ROOM DATA SHEET		Department of Health HEALTH INFRASTRUCTURE SERVICE
Updated Reference: June 1994	Department: SURGICAL/DELIVERY	Room Title: ANESTHESIOLOGIST'S AREA	Reference Sheet Number: 25B-CL-RDS2 8B
TECHNICAL DESIGN DATA:			
ENVIRONMENTAL CONDITIONS	DESIGN DATA	ENVIRONMENTAL CONDITIONS	DESIGN DATA
AIR		LIGHTING AND VISUAL	
Outdoor air temperature (deg. C)	ave. local station temp. reading	General illumination (LUX)	500
Room Temperature (deg. C)	25	Night illumination (LUX)	NA
Mechanical ventilation:		Task illumination (LUX)	NA
Volume (cu.m./hr.-person)	12.75	Colour rendering	essential:desirable:UNNECESSARY
Velocity (m./hr.)	900	Standby light	essential:DESIRABLE:unnecessary
Pressure:		Emergency light	essential:DESIRABLE:unnecessary
Exhaust (psi)	NA	Daylight	essential:desirable:UNNECESSARY
Inlet (psi)	NA	View out	essential:desirable:UNNECESSARY
% Dust filtration	93% - 99% @ 1 micron	Privacy	essential:desirable:UNNECESSARY
Humidity (% RH)	50	Black out	essential:desirable:UNNECESSARY
Cooling load (TR)	0.5		
SOUND		SAFETY:	
Acceptable sound level (db)	50	Accessible hot surface:	NA
Speech privacy	essential:desirable:UNNECESSARY	Maximum temperature (deg. C)	NA
Quality which cannot be	tonal impact	Domestic hot water:	NA
tolerated		Maximum temperature (deg. C)	NA
		Access: limit	medical staff
		Fire risk	LOW : medium : high
		Other risks	NA

Hospital: Secondary, 25-Bed	ROOM DATA SHEET		Department of Health HEALTH INFRASTRUCTURE SERVICE
Updated Reference: June 1994	Department: SURGICAL/DELIVERY	Room Title: ANESTHESIOLOGIST'S AREA	Reference Sheet Number: 25B-CL-RDS2.8C
TECHNICAL DESIGN DATA:		LAYOUT OF ROOM AND SPACE COMPONENTS:	
DIRECT SERVICES	DESIGN DATA	<p>Scale 1:100 mts.</p>	
Disposal	hospital waste category: A		
Hot water	NA		
Cold water	NA		
Drainage	NA		
Gas	NA		
Compressed air	NA		
Steam	NA		
Others			
DIRECT DEMANDS ON FLOOR AND WALL			
Loading	NA		
Spillage	NA		
Foot traffic	LIGHT : medium : heavy	<p>Key</p> <p>1 Chair, upright, stacking 2 Counter, open below 3 Counter, shelves below 4 Partition with glass in upper panel 5 Steel filing cabinet, 500x700 6 Cabinet, wall hung</p>	
Wheel traffic	NA		
Impacts	NA		
Abrasion	NA		
Easy maintenance	ESSENTIAL:desirable:unnecessary		
Vibration free	ESSENTIAL:desirable:unnecessary	SPACE DEMANDS (Total Minimum Space Required in sq.m.) : 8.75	
Door sets	nil, open to circulation	Space Components	Minimum Space Required/Component
Windows	nil	REGULATIONS AND NOTES:	
Internal glazing	nil		

Hospital: Secondary, 25-Bed	R O O M   D A T A   S H E E T		Department of Health HEALTH INFRASTRUCTURE SERVICE
Updated Reference: June 1994	Department: SURGICAL/DELIVERY	Room Title: ANESTHESIOLOGISTS AREA	Reference Sheet Number: 25B-CL-RDS2.8A
FUNCTIONAL DESIGN REQUIREMENTS:			
<p>This activity space provides facilities needed for the following activities:</p> <ul style="list-style-type: none"> <li>a. Anesthesiologist reads and writes in his work station.</li> <li>b. Anesthesiologist records, stores, and retrieves data from data file.</li> </ul> <p>People Involved:</p> <ul style="list-style-type: none"> <li>1 x Resident Physician/Anesthesiologist</li> </ul> <p>Planning Relationships:</p> <ul style="list-style-type: none"> <li>a. Close to Operating Room.</li> <li>b. Close to Delivery Room.</li> <li>c. Adjacent to Anesthesia Storage.</li> </ul>	EQUIPMENT AND ACCESSORY CHECKLIST	QUANTITY	REMARKS
	FURNITURE AND FIXTURE CHECKLIST	QUANTITY	REMARKS
	Chair, upright, stacking Counter, open*below Counter, shelves below Steel filing cabinet, 500x700 Cabinet, wall hung	1    1	
	ADDITIONAL EQUIPMENT AND ENGINEERING TERMINALS	QUANTITY	REMARKS
Outlet, intercom. Outlet, 10A, 2P, 240V	1 2	grounding type, parallel slots	



Hospital: Secondary, 25-Bed	ROOM DATA SHEET		Department of Health HEALTH INFRASTRUCTURE SERVICE
Updated Reference: June 1994	Department: SURGICAL/DELIVERY	Room Title: STERILE INSTRUMENT & SUPPLY STORAGE	Reference Sheet Number: 25B-CL-RDS2.9C
TECHNICAL DESIGN DATA:		LAYOUT OF ROOM AND SPACE COMPONENTS:	
DIRECT SERVICES	DESIGN DATA	<p>Scale 1:100 mts.</p>	
Disposal	hospital waste category: A		
Hot water	NA		
Cold water	NA		
Drainage	NA		
Gas	NA		
Compressed air	NA		
Steam	NA		
Others			
DIRECT DEMANDS ON FLOOR-AND WALL			
Loading	light : MEDIUM : heavy	SPACE DEMANDS (Total Minimum Space Required in sq.m.) : 12.25	
Spillage	NA	Space Components	Minimum Space Required/Component
Foot traffic	light : MEDIUM : heavy		
Wheel traffic	light : MEDIUM : heavy		
Impacts	NA		
Abrasion	NA		
Easy maintenance	ESSENTIAL:desirable:unnecessary		
Vibration free	ESSENTIAL:desirable:unnecessary		
Door sets	ordinary access door with vision panel		
Windows	clear, solar control	REGULATIONS AND NOTES:	
Internal glazing	clear		

Hospital: Secondary, 25-Bed	ROOM DATA SHEET		Department of Health HEALTH INFRASTRUCTURE SERVICE								
Updated Reference: June 1994	Department: SURGICAL/DELIVERY	Room Title: CLEAN-UP ROOM	Reference Sheet Number: 25B-CL-RDS2.10C								
TECHNICAL DESIGN DATA:		LAYOUT OF ROOM AND SPACE COMPONENTS:									
DIRECT SERVICES	DESIGN DATA	<p>Scale 1:100 mts.</p>									
Disposal	hospital waste category: A,B,E,F										
Hot water	required at sink and laundry tray										
Cold water	req'd at sink, laundry tray & slop sink										
Drainage	req'd at sink, laundry tray, slop sink & floor										
Gas	NA										
Compressed air	NA										
Steam	NA										
Others											
DIRECT DEMANDS ON FLOOR AND WALL				<p>Key</p> <table> <tr> <td>1 Counter with cabinet below, 600mm wide</td> <td>5 Linen hamper</td> </tr> <tr> <td>2 Counter, open below, 900mm high</td> <td>6 Double compartment laundry tray with drainboards</td> </tr> <tr> <td>3 Waste paper receptacle</td> <td>7 Clinical sink</td> </tr> <tr> <td>4 Sanitary waste receptacle</td> <td>8 Janitor's Closet with slop sink</td> </tr> </table>		1 Counter with cabinet below, 600mm wide	5 Linen hamper	2 Counter, open below, 900mm high	6 Double compartment laundry tray with drainboards	3 Waste paper receptacle	7 Clinical sink
1 Counter with cabinet below, 600mm wide	5 Linen hamper										
2 Counter, open below, 900mm high	6 Double compartment laundry tray with drainboards										
3 Waste paper receptacle	7 Clinical sink										
4 Sanitary waste receptacle	8 Janitor's Closet with slop sink										
Loading	NA	SPACE DEMANDS (Total Minimum Space Required in sq.m.) : 15.00									
Spillage	slight : occasional : FREQUENT										
Foot traffic	light : medium : HEAVY										
Wheel traffic	NA										
Impacts	NA										
Abrasion	NA										
Easy maintenance	ESSENTIAL:desirable:unnecessary										
Vibration free	ESSENTIAL:desirable:unnecessary										
Door sets	ordinary access door										
Windows	clear, solar control										
Internal glazing	nil										
		REGULATIONS AND NOTES:									

Hospital: Secondary, 25-Bed	ROOM DATA SHEET		Department of Health HEALTH INFRASTRUCTURE SERVICE
Updated Reference: June 1994	Department: SURGICAL/DELIVERY	Room Title: STERILE INSTRUMENT & SUPPLY STORAGE	Reference Sheet Number: 25B-CL-RDS2.9B
TECHNICAL DESIGN DATA			
ENVIRONMENTAL CONDITIONS	DESIGN DATA	ENVIRONMENTAL CONDITIONS	DESIGN DATA
AIR		LIGHTING AND VISUAL	
Outdoor air temperature (deg. C)	ave. local station temp. reading	General illumination (LUX)	500
Room Temperature (deg. C)	atmospheric	Night illumination (LUX)	NA
Mechanical ventilation:		Task illumination (LUX)	NA
Volume (cu.m./hr.-person)	12.75	Colour rendering	essential:DESIRABLE:unnecessary
Velocity (m./hr.)	700	Standby light	ESSENTIAL:desirable:unnecessary
Pressure:		Emergency light	ESSENTIAL:desirable:unnecessary
Exhaust (psi)	NA	Daylight	essential:desirable:UNNECESSARY
Inlet (psi)	NA	View out	essential:desirable:UNNECESSARY
% Dust filtration	NA	Privacy	essential:desirable:UNNECESSARY
Humidity (% RH)	NA	Black out	essential:desirable:UNNECESSARY
Cooling load (TR)	NA		
SOUND		SAFETY	
Acceptable sound level (db)	60	Accessible hot surface:	NA
Speech privacy	essential:desirable:UNNECESSARY	Maximum temperature (deg. C)	NA
Quality which cannot be	tonal impact	Domestic hot water:	NA
tolerated		Maximum temperature (deg. C)	NA
		Access limit	medical staff
		Fire risk	LOW : medium : high
		Other risks	NA

Hospital Secondary, 25-Bed	ROOM DATA SHEET		Department of Health HEALTH INFRASTRUCTURE SERVICE
Updated Reference: June 1994	Department: SURGICAL/DELIVERY	Room Title: STERILE INSTRUMENT & SUPPLY STORAGE	Reference Sheet Number: 25B-CL-RDS2.9A
FUNCTIONAL DESIGN REQUIREMENTS:			
<p>This activity space provides facilities needed for the following activities:</p> <ul style="list-style-type: none"> <li>a. Nurse checks the availability of supplies for issuance.</li> <li>b. Nursing Attendant prepares needed supplies and articles listed in requisition form.</li> <li>c. Nursing Attendant packs items individually, in bulk, or wrap with clean paper before issuance.</li> <li>d. Nurse performs physical inventory and update stock cards.</li> <li>e. Nurse receives sterile supplies and instruments, puts entry into stock cards and stores supplies into shelves.</li> </ul> <p>People Involved:</p> <ul style="list-style-type: none"> <li>1 x Nurse</li> <li>1 x Nursing Attendant</li> </ul> <p>Planning Relationships:</p> <ul style="list-style-type: none"> <li>a. Close to Operating Room.</li> <li>b. Close to Delivery Room.</li> <li>c. Adjacent to Surgical Supervisor's Area.</li> </ul>	EQUIPMENT AND ACCESSORY CHECKLIST	QUANTITY	REMARKS
	FURNITURE AND FIXTURE CHECKLIST	QUANTITY	REMARKS
	Shelving, 450mm deep		fixed
	ADDITIONAL EQUIPMENT AND ENGINEERING TERMINALS	QUANTITY	REMARKS
	Rail, curtain, window Outlet, 10A, 2P, 240V	1 1	grounding type, parallel slots





Hospital: Secondary, 25-Bed	ROOM DATA SHEET		Department of Health HEALTH INFRASTRUCTURE SERVICE
Updated Reference: June 1994	Department: SURGICAL/DELIVERY	Room Title: CLEAN-UP ROOM	Reference Sheet Number: 25B-CL-RDS2.10B
TECHNICAL DESIGN DATA:			
ENVIRONMENTAL CONDITIONS	DESIGN DATA	ENVIRONMENTAL CONDITIONS	DESIGN DATA
AIR		LIGHTING AND VISUAL	
Outdoor air temperature (deg. C)	ave. local station temp. reading	General illumination (LUX)	500
Room Temperature (deg. C)	25	Night illumination (LUX)	NA
Mechanical ventilation:		Task illumination (LUX)	NA
Volume (cu.m /hr.-person)	12.75	Colour rendering	ESSENTIAL:desirable:unnecessary
Velocity (m./hr.)	900	Standby light	essential:DESIRABLE:unnecessary
Pressure:		Emergency light	essential:desirable:UNNECESSARY
Exhaust (psi)	NA	Daylight	essential:desirable:UNNECESSARY
Inlet (psi)	NA	View out	essential:DESIRABLE:unnecessary
% Dust filtration	93% - 99% @ 1 micron	Privacy	essential:desirable:UNNECESSARY
Humidity (% RH)	50	Black out	essential:desirable:UNNECESSARY
Cooling load (TR)	1.0		
SOUND		SAFETY	
Acceptable sound level (db)	60	Accessible hot surface:	NA
Speech privacy	essential:desirable:UNNECESSARY	Maximum temperature (deg. C)	NA
Quality which cannot be	NA	Domestic hot water:	at sink and laundry tray
tolerated		Maximum temperature (deg. C)	70
		Access limit	medical staff
		Fire risk	LOW : medium : high
		Other risks	NA

Hospital: Secondary, 25-Bed	R O O M   D A T A   S H E E T		Department of Health HEALTH INFRASTRUCTURE SERVICE
Updated Reference: June 1994	Department: SURGICAL/DELIVERY	Room Title: STAFF LOCKER ROOM AND TOILET	Reference Sheet Number: 25B-CL-RDS2.11A
FUNCTIONAL DESIGN REQUIREMENTS:			
<p>This activity space provides facilities needed for the following activities:</p> <ul style="list-style-type: none"> <li>a. Resident Physicians/Nurses change clothes in toilet and bathroom.</li> <li>b. Resident Physicians/Nurses bathe in the bathroom.</li> <li>c. Storing of clothing and personal effects.</li> </ul> <p>People Involved:</p> <p>Resident Physicians Nurse Nursing Attendants</p> <p>Planning Relationships:</p> <ul style="list-style-type: none"> <li>a. Close to access door/entrance door of the Surgical/Delivery Service Complex.</li> </ul>	EQUIPMENT AND ACCESSORY CHECKLIST	QUANTITY	REMARKS
	Linen hamper	4	
	FURNITURE AND FIXTURE CHECKLIST	QUANTITY	REMARKS
	Locker, 500x600 Lavatory Water closet	8 2 2	
	ADDITIONAL EQUIPMENT AND ENGINEERING TERMINALS	QUANTITY	REMARKS
	Rail, curtain, window Outlet, intercom Outlet, 10A, 2P, 240V, duplex	2 2 4	grounding type, parallel slots

Hospital: Secondary, 25-Bed	ROOM DATA SHEET		Department of Health HEALTH INFRASTRUCTURE SERVICE
Updated Reference: June 1994	Department: SURGICAL/DELIVERY	Room Title: STAFF LOCKER ROOM AND TOILET	Reference Sheet Number: 25B-CL-RDS2.11B
TECHNICAL DESIGN DATA:			
ENVIRONMENTAL CONDITIONS	DESIGN DATA	ENVIRONMENTAL CONDITIONS	DESIGN DATA
AIR		LIGHTING AND VISUAL	
Outdoor air temperature (deg. C)	ave. local station temp. reading	General illumination (LUX)	250
Room Temperature (deg. C)	ambient	Night illumination (LUX)	NA
Mechanical ventilation:		Task illumination (LUX)	NA
Volume (cu.m./hr.-person)	NA	Colour rendering	essential:DESIRABLE:unnecessary
Velocity (m./hr.)	NA	Standby light	essential:DESIRABLE:unnecessary
Pressure:		Emergency light	essential:DESIRABLE:unnecessary
Exhaust (psi)	NA	Daylight	essential:DESIRABLE:unnecessary
Inlet (psi)	NA	View out	essential:DESIRABLE:unnecessary
% Dust filtration	93% - 99% @ 1 micron	Privacy	ESSENTIAL:desirable:unnecessary
Humidity (% RH)	NA	Black out	essential:desirable:UNNECESSARY
Cooling load (TR)	NA		
SOUND		SAFETY	
Acceptable sound level (db)	50	Accessible hot surface:	NA
Speech privacy	essential:DESIRABLE:unnecessary	Maximum temperature (deg. C)	NA
Quality which cannot be	tonal impact	Domestic hot water:	at lavatory and shower
tolerated		Maximum temperature (deg. C)	70
		Access limit:	medical staff
		Fire risk	LOW : medium : high
		Other risks	NA



Hospital: Secondary, 25-Bed	ROOM DATA SHEET		Department of Health HEALTH INFRASTRUCTURE SERVICE
Updated Reference: June 1994	Department: SURGICAL/DELIVERY	Room Title: STAFF LOCKER ROOM AND TOILET	Reference Sheet Number: 25B-CL-RDS2.11C
TECHNICAL DESIGN DATA:		LAYOUT OF ROOM AND SPACE COMPONENTS:	
DIRECT SERVICES	DESIGN DATA	<div>Scale 1:100 mts.</div> <div>Key</div> <div>1 Linen hamper 2 Locker, 500x600</div>	
Disposal	hospital waste category: A		
Hot water	required at lavatory and shower		
Cold water	required at toilet fixtures		
Drainage	required at toilet fixtures and flr.		
Gas	NA		
Compressed air	NA		
Steam	NA		
Others			
DIRECT DEMANDS ON FLOOR AND WALL			
Loading	NA		
Spillage	SLIGHT : occasional : frequent		
Foot traffic	light : MEDIUM : heavy		
Wheel traffic	NA		
Impacts	NA		
Abrasion	NA		
Easy maintenance	ESSENTIAL:desirable:unnecessary	Space Components	Minimum Space Required/Component
Vibration free	essential:DESIRABLE:unnecessary	Female Locker Area	10.14 sq. m.
Door sets	ordinary access door	Male Locker Area	10.14 sq. m.
		Female Toilet	3.36 sq. m.
Windows	clear, solar control, privacy con-	Male Toilet	3.36 sq. m.
	trol	REGULATIONS AND NOTES:	
Internal glazing	nil		

Hospital: Secondary, 25-Bed	ROOM DATA SHEET		Department of Health HEALTH INFRASTRUCTURE SERVICE
Updated Reference: June 1994	Department: SURGICAL/DELIVERY	Room Title: STAFF LOUNGE	Reference Sheet Number: 25B-CL-RDS2.12B
TECHNICAL DESIGN DATA			
ENVIRONMENTAL CONDITIONS	DESIGN DATA	ENVIRONMENTAL CONDITIONS	DESIGN DATA
AIR		LIGHTING AND VISUAL	
Outdoor air temperature (deg. C)	ave. local station temp. reading	General illumination (LUX)	150
Room Temperature (deg. C)	25	Night illumination (LUX)	NA
Mechanical ventilation		Task illumination (LUX)	NA
Volume (cu m./hr.-person)	12.75	Colour rendering	essential:desirable:UNNECESSARY
Velocity (m./hr.)	750	Standby light	essential:DESIRABLE:unnecessary
Pressure:		Emergency light	essential:DESIRABLE:unnecessary
Exhaust (psi)	NA	Daylight	essential:DESIRABLE:unnecessary
Inlet (psi)	NA	View out	essential:DESIRABLE:unnecessary
% Dust filtration	93% - 99% @ 1 micron	Privacy	ESSENTIAL:desirable:unnecessary
Humidity (% RH)	50	Black out	essential:desirable:UNNECESSARY
Cooling load (TR)	1.5		
SOUND		SAFETY	
Acceptable sound level (db)	50	Accessible hot surface:	NA
Speech privacy	essential:DESIRABLE:unnecessary	Maximum temperature (deg. C)	NA
Quality which cannot be	tonal impact	Domestic hot water:	NA
tolerated		Maximum temperature (deg. C)	NA
		Access limit	medical staff
		Fire risk	LOW : medium : high
		Other risks	NA

Hospital: Secondary, 25-Bed	ROOM DATA SHEET		Department of Health HEALTH INFRASTRUCTURE SERVICE
Updated Reference: June 1994	Department: SURGICAL/DELIVERY	Room Title: STAFF LOUNGE	Reference Sheet Number: 25B-CL-RDS2.12C
TECHNICAL DESIGN DATA:		LAYOUT OF ROOM AND SPACE COMPONENTS:	
DIRECT SERVICES	DESIGN DATA	<p>Scale 1:100 mts.</p> <p>Key</p> <p>1 Sofa bed 2 Coffee table 3 Airconditioning unit 4 Book shelf</p>	
Disposal	hospital waste category: A		
Hot water	NA		
Cold water	NA		
Drainage	NA		
Gas	NA		
Compressed air	NA		
Steam	NA		
Others			
DIRECT DEMANDS ON FLOOR AND WALL			
Loading	NA		
Spillage	NA		
Foot traffic	light : MEDIUM : heavy		
Wheel traffic	NA		
Impacts	NA		
Abrasion	NA		
Easy maintenance	essential:DESIRABLE:unnecessary		
Vibration free	essential:DESIRABLE:unnecessary		
Door sets	ordinary access door		
Windows	clear, solar control, privacy control		
Internal glazing	nil		
SPACE DEMANDS (Total Minimum Space Required in sq.m.) : 27.00			
Space Components		Minimum Space Required/Component	
Lounge Area		18.00 sq. m.	
Circulation		9.00 sq. m.	
REGULATIONS AND NOTES:			

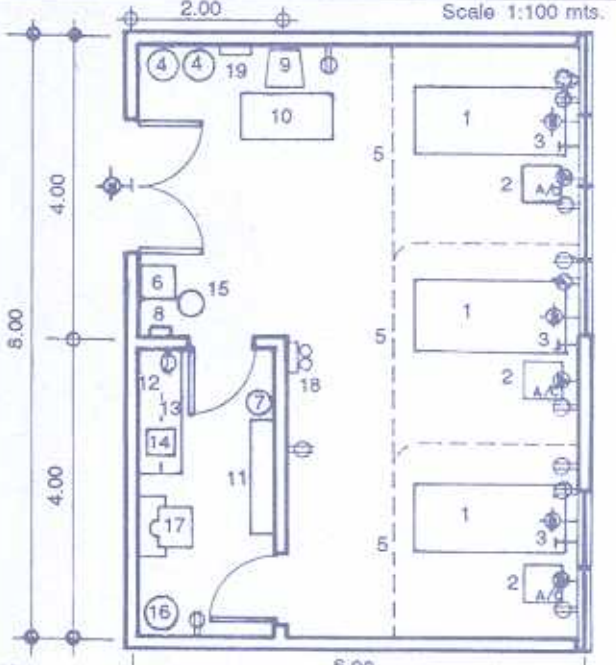


Hospital: Secondary, 25-Bed	ROOM DATA SHEET		Department of Health HEALTH INFRASTRUCTURE SERVICE
Updated Reference: June 1994	Department: SURGICAL/DELIVERY	Room Title: STAFF LOUNGE	Reference Sheet Number: 25B-CL-RDS2.12A
FUNCTIONAL DESIGN REQUIREMENTS:			
<p>This activity space provides facilities needed for the following activities:</p> <p>a. Resident Physicians/Nurses take rest in between surgeries.</p> <p>People Involved:</p> <p>Resident Physicians Nurses Nursing Attendant</p> <p>Planning Relationships:</p> <p>a. Close to access door/entrance door of the Surgical/Delivery Service Complex.</p>	EQUIPMENT AND ACCESSORY CHECKLIST	QUANTITY	REMARKS
	FURNITURE AND FIXTURE CHECKLIST	QUANTITY	REMARKS
	Sofa bed Coffee table Book shelf	2 2 1	
	ADDITIONAL EQUIPMENT AND ENGINEERING TERMINALS	QUANTITY	REMARKS
	Rail, curtain, window Outlet, telephone Outlet, 10A, 2P, 240V  Outlet, intercom Outlet, 15A, 2P, 240V	1 1 3  1 1	grounding type, parallel slots  grounding type, tandem slot



Hospital: Secondary, 25-Bed	ROOM DATA SHEET		Department of Health HEALTH INFRASTRUCTURE SERVICE
Updated Reference: June 1994	Department: SURGICAL/DELIVERY	Room Title: RECOVERY ROOM	Reference Sheet Number: 25B-CL-RDS2.13A
FUNCTIONAL DESIGN REQUIREMENTS:			
<p>This activity space provides facilities needed for the following activities:</p> <ul style="list-style-type: none"> <li>a. Patient arrives in a stretcher trolley/bed.</li> <li>b. Nurses and nursing attendants monitor vital signs of patient at regular intervals.</li> <li>c. Use of monitoring and diagnostic equipment.</li> </ul> <p>People Involved:</p> <ul style="list-style-type: none"> <li>1 x Physician</li> <li>Nurses</li> <li>Nursing Attendants</li> </ul> <p>Planning Relationships:</p> <ul style="list-style-type: none"> <li>a. Close to Operating Room.</li> <li>b. Close to Delivery Room.</li> </ul> <p>This activity space provides facilities for the delivery of General Patient Care.</p>	<p>EQUIPMENT AND ACCESSORY CHECKLIST</p> <p>Oxygen outlet</p> <p>Waste paper receptacle</p> <p>Paper towel dispenser</p> <p>Sanitary waste receptacle</p> <p>Laundry hamper</p> <p>Standby BP apparatus</p> <p>Wall clock</p> <p>Emergency light</p> <p>Oxygen unit</p> <p>Suction apparatus</p>	<p>QUANTITY</p> <p>3</p> <p>1</p> <p>1</p> <p>1</p> <p>1</p> <p>1</p> <p>1</p> <p>2</p> <p>1</p>	<p>REMARKS</p> <p>mounted 1600mm above finish floor line</p>
	<p>FURNITURE AND FIXTURE CHECKLIST</p> <p>Bedside cabinet, 400x500</p> <p>Desk</p> <p>Chair, upright, stacking</p> <p>Wall cabinet</p> <p>Shelf, 300mm deep</p> <p>Work counter, 700mm deep and 900mm high with cabinets below</p> <p>Stretcher bed</p> <p>Lavatory with gooseneck spout</p> <p>Clinical sink with bed pan flushing attachment</p> <p>Sink in counter with gooseneck spout</p>	<p>QUANTITY</p> <p>3</p> <p>1</p> <p>1</p> <p>3</p> <p>1</p> <p>1</p> <p>1</p>	<p>REMARKS</p>
	<p>ADDITIONAL EQUIPMENT AND ENGINEERING TERMINALS</p> <p>Rail, curtain, window</p> <p>Rail, curtain, cubicle</p> <p>Outlet, intercom</p> <p>Outlet, 10A, 2P, 240V</p> <p>Outlet, 15A, 2P, 240V</p> <p>Smoke detector</p>	<p>QUANTITY</p> <p>1</p> <p>3</p> <p>1</p> <p>13</p> <p>3</p> <p>1</p>	<p>REMARKS</p> <p>grounding type, parallel slots</p> <p>grounding type, tandem slots</p>

Hospital: Secondary, 25-Bed	R O O M   D A T A   S H E E T		Department of Health HEALTH INFRASTRUCTURE SERVICE
Updated Reference: June 1994	Department: SURGICAL/DELIVERY	Room Title: RECOVERY ROOM	Reference Sheet Number: 25B-CL-RDS2.13B
TECHNICAL DESIGN DATA:			
ENVIRONMENTAL CONDITIONS	DESIGN DATA	ENVIRONMENTAL CONDITIONS	DESIGN DATA
AIR		LIGHTING AND VISUAL	
Outdoor air temperature (deg. C)	ave. local station temp. reading	General illumination (LUX)	250
Room Temperature (deg. C)	25	Night illumination (LUX)	100
Mechanical ventilation:		Task illumination (LUX)	500
Volume (cu.m./hr.-person)	12.75	Colour rendering	ESSENTIAL:desirable:unnecessary
Velocity (m./hr.)	900	Standby light	ESSENTIAL:desirable:unnecessary
Pressure:		Emergency light	ESSENTIAL:desirable:unnecessary
Exhaust (psi)	NA	Daylight	essential:desirable:UNNECESSARY
Inlet (psi)	NA	View out	essential:DESIRABLE:unnecessary
% Dust filtration	93%- 99% @ 1 micron	Privacy	essential:DESIRABLE:unnecessary
Humidity (% RH)	50	Black out	essential:desirable:UNNECESSARY
Cooling load (TR)	3.0		
SOUND		SAFETY	
Acceptable sound level (db)	40	Accessible hot surface:	NA
Speech privacy	ESSENTIAL:desirable:unnecessary	Maximum temperature (deg. C)	NA
Quality which cannot be	tonal impact	Domestic hot water:	at lavatory and sink
tolerated		Maximum temperature (deg. C)	70
		Access limit	medical staff and patient
		Fire risk	LOW : medium : high
		Other risks	NA

Hospital: Secondary, 25-Bed		ROOM DATA SHEET		Department of Health HEALTH INFRASTRUCTURE SERVICE	
Updated Reference: June 1994		Department: SURGICAL/DELIVERY		Room Title: RECOVERY ROOM	
				Reference Sheet Number: 25B-CL-RDS2.13C	
TECHNICAL DESIGN DATA:				LAYOUT OF ROOM AND SPACE COMPONENTS:	
DIRECT SERVICES		DESIGN DATA			
Disposal	hospital waste category: A,B,E,F				
Hot water	required at lavatory and sink				
Cold water	required at lavatory and sink				
Drainage	required at lavatory and sink				
Gas	oxygen outlet				
Compressed air	NA				
Steam	NA				
Others					
DIRECT DEMANDS ON FLOOR AND WALL					
Loading	NA				
Spillage	NA				
Foot traffic	light : medium : HEAVY				
Wheel traffic	light : medium : HEAVY				
Impacts	NA				
Abrasion	NA				
Easy maintenance	ESSENTIAL;desirable;unnecessary		SPACE DEMANDS (Total Minimum Space Required in sq.m.) : 48.00		
Vibration free	ESSENTIAL;desirable;unnecessary				
Door sets	bed, stretcher trolley, wheelchair access		Space Components Recovery area Utility room		
Windows	clear, solar control, privacy con- trol		Minimum Space Required/Component 40.00 sq. m. 8.00 sq. m.		
Internal glazing	clear		REGULATIONS AND NOTES: 3 beds per OR (from Hospital Planning and Administration)		



Hospital: Secondary, 25-Bed	ROOM DATA SHEET		Department of Health HEALTH INFRASTRUCTURE SERVICE
Updated Reference: June 1994	Department: SURGICAL/DELIVERY	Room Title: CENTRAL STERILIZING & SUPPLY ROOM	Reference Sheet Number: 25B-CL-RDS3.1A
FUNCTIONAL DESIGN REQUIREMENTS:			
<p>This activity space provides facilities needed for the following activities:</p> <ul style="list-style-type: none"> <li>a. Disassembling and arranging of instruments.</li> <li>b. Washing of instruments in a washer-sterilizer.</li> <li>c. Sterilization of instruments.</li> <li>d. Preparation of instruments for future use.</li> <li>e. Issuance of instruments as requested by other hospital services.</li> </ul>	EQUIPMENT AND ACCESSORY CHECKLIST	QUANTITY	REMARKS
	Multiple rubber washer	1	
	Dressing sterilizer (600x600x900)	1	
	Exhaust fan	1	
	Hot air sterilizer (450x450x350)	1	
	Autoclave	2	
	Supply cart	1	
	Waste paper receptacle	1	
	Water still	1	
	Ladder	1	
Gloves drying rack	1		
Gloves powder box	1		
Waste receptacle for sharps/ needles	1		
Instrument sterilizer	1		
<p>People Involved:</p> <ul style="list-style-type: none"> <li>1 x Central Supply Service</li> <li>1 x Nurse</li> <li>1 x Nursing Attendant</li> </ul>	FURNITURE AND FIXTURE CHECKLIST	QUANTITY	REMARKS
	Counter, 900mm high, open below	1	
	Wall cabinets and shelves		
	Table		
	Counter, 900mm high, cabinets and drawers below	2	
	Sterile supply cabinets		
	Adjustable stool		
Sink and drainboard	1		
<p>Planning Relationships:</p> <ul style="list-style-type: none"> <li>a. Close to Surgical/Delivery Service Complex.</li> </ul>	ADDITIONAL EQUIPMENT AND ENGINEERING TERMINALS	QUANTITY	REMARKS
	Rail, curtain, window	1	
	Outlet, intercom	1	
	Outlet, 10A, 2P, 240V, duplex	4	grounding type, parallel slots
	Outlet, 10A, 2P, 240V, single	1	grounding type, parallel slots, (exhaust)
	Outlet, 15A, 2P, 240V, single	1	grounding type, tandem slots, (A/C)
	Outlet, 30A, 2P, 240V, single	2	for sterilizer
	Smoke detector	1	
	Heat detector	1	



Hospital: Secondary, 25-Bed	ROOM DATA SHEET		Department of Health HEALTH INFRASTRUCTURE SERVICE
Updated Reference: June 1994	Department: SURGICAL/DELIVERY	Room Title: CENTRAL STERILIZING & SUPPLY ROOM	Reference Sheet Number: 25B-CL-RDS3.1B
TECHNICAL DESIGN DATA:			
ENVIRONMENTAL CONDITIONS	DESIGN DATA	ENVIRONMENTAL CONDITIONS	DESIGN DATA
AIR		LIGHTING AND VISUAL	
Outdoor air temperature (deg. C)	ave. local station temp. reading	General illumination (LUX)	500-1,000
Room Temperature (deg. C)	atmospheric	Night illumination (LUX)	NA
Mechanical ventilation:		Task illumination (LUX)	NA
Volume (cu.m./hr.-person)	12.75	Colour rendering	ESSENTIAL:desirable:unnecessary
Velocity (m./hr.)	900	Standby light	ESSENTIAL:desirable:unnecessary
Pressure:		Emergency light	ESSENTIAL:desirable:unnecessary
Exhaust (psi)	NA	Daylight	essential:desirable:UNNECESSARY
Inlet (psi)	NA	View out	essential:DESIRABLE:unnecessary
% Dust filtration	NA	Privacy	essential:DESIRABLE:unnecessary
Humidity (% RH)	NA	Black out	essential:desirable:UNNECESSARY
Cooling load (TR)	NA		
SOUND		SAFETY	
Acceptable sound level (db)	60	Accessible hot surface	NA
Speech privacy	essential:DESIRABLE:unnecessary	Maximum temperature (deg. C)	100
Quality which cannot be	NA	Domestic hot water:	NA
tolerated		Maximum temperature (deg. C)	70
		Access limit	CSSR staff
		Fire risk	low medium HIGH
		Other risks	NA

Hospital: Secondary, 25-Bed	ROOM DATA SHEET		Department of Health HEALTH INFRASTRUCTURE SERVICE								
Updated Reference: June 1994	Department: SURGICAL/DELIVERY	Room Title: CENTRAL STERILIZING & SUPPLY ROOM	Reference Sheet Number: 25B-CL-RDS3.1C								
TECHNICAL DESIGN DATA:		LAYOUT OF ROOM AND SPACE COMPONENTS:									
DIRECT SERVICES	DESIGN DATA	<p>Scale 1:100 mts.</p>									
Disposal	hospital waste category: A,D										
Hot water	required at sink										
Cold water	required at sink										
Drainage	required at sink and floor										
Gas	NA										
Compressed air	NA										
Steam	NA										
Others											
DIRECT DEMANDS ON FLOOR AND WALL											
Loading	light : MEDIUM : heavy										
Spillage	slight : OCCASIONAL : frequent										
Foot traffic	light : MEDIUM : heavy										
Wheel traffic	light : MEDIUM : heavy										
Impacts	NA										
Abrasion	NA										
Easy maintenance	ESSENTIAL:desirable:unnecessary										
Vibration free	ESSENTIAL:desirable:unnecessary										
Door sets	ordinary access door										
Windows	clear, solar control	<p>SPACE DEMANDS (Total Minimum Space Required in sq.m.) : 42.00</p> <table border="1"> <thead> <tr> <th>Space Components</th> <th>Minimum Space Required/Component</th> </tr> </thead> <tbody> <tr><td> </td><td> </td></tr> <tr><td> </td><td> </td></tr> <tr><td> </td><td> </td></tr> </tbody> </table>		Space Components	Minimum Space Required/Component						
Space Components	Minimum Space Required/Component										
Internal glazing	clear	REGULATIONS AND NOTES:									

Hospital: Secondary, 25-Bed	R O O M   D A T A   S H E E T		Department of Health HEALTH INFRASTRUCTURE SERVICE
Updated Reference: June 1994	Department: SURGICAL/DELIVERY	Room Title: SURGICAL SUPERVISOR'S AREA	Reference Sheet Number: 25B-CL-RDS2.6A
FUNCTIONAL DESIGN REQUIREMENTS			
<p>This activity space provides facilities needed for the following activities:</p> <ul style="list-style-type: none"> <li>a. Surgical supervisor reads and writes in his work station.</li> <li>b. Surgical supervisor records, stores, and retrieves data from data file.</li> </ul> <p>People Involved:</p> <ul style="list-style-type: none"> <li>1 x Surgical Supervisor</li> <li>1 x Nurse or Nursing Attendant</li> </ul> <p>Planning Relationships:</p> <ul style="list-style-type: none"> <li>a. Close to Operating Room.</li> <li>b. Close to Delivery Room.</li> </ul>	EQUIPMENT AND ACCESSORY CHECKLIST	QUANTITY	REMARKS
	FURNITURE AND FIXTURE CHECKLIST	QUANTITY	REMARKS
	Chair, upright, stacking	2	
	Counter, open below		
	Steel filing cabinet, 500x700	1	
Cabinet, wall hung			
	ADDITIONAL EQUIPMENT AND ENGINEERING TERMINALS	QUANTITY	REMARKS
	Outlet, telephone	1	
	Outlet, 10A, 2P, 240V	2	grounding type, parallel slots
	Intercom outlet	1	

Hospital: Secondary, 25-Bed	ROOM DATA SHEET		Department of Health HEALTH INFRASTRUCTURE SERVICE
Updated Reference: June 1994	Department: SURGICAL/DELIVERY	Room Title: SURGICAL SUPERVISORS AREA	Reference Sheet Number: 25B-CL-RDS2.6C
TECHNICAL DESIGN DATA:		LAYOUT OF ROOM AND SPACE COMPONENTS:	
DIRECT SERVICES	DESIGN DATA	<p>Scale 1:100 mts.</p>	
Disposal	hospital waste category: A		
Hot water	NA		
Cold water	NA		
Drainage	NA		
Gas	NA		
Compressed air	NA		
Steam	NA		
Others			
DIRECT DEMANDS ON FLOOR AND WALL			
Loading	NA		
Spillage	NA		
Foot traffic	LIGHT : medium : heavy		
Wheel traffic	NA		
Impacts	NA		
Abrasion	NA		
Easy maintenance	ESSENTIAL:desirable:unnecessary	SPACE DEMANDS (Total Minimum Space Required in sq.m.) : 8.75	
Vibration free	ESSENTIAL:desirable:unnecessary	Space Components	Minimum Space Required/Component
Door sets	nil, open to circulation		
Windows	nil	REGULATIONS AND NOTES:	
Internal glazing	nil		



Hospital: Secondary, 25-Bed	ROOM DATA SHEET		Department of Health HEALTH INFRASTRUCTURE SERVICE
Updated Reference: June 1994	Department: SURGICAL/DELIVERY	Room Title: SURGICAL SUPERVISOR'S AREA	Reference Sheet Number: 25B-CL-RDS2.6B
TECHNICAL DESIGN DATA			
ENVIRONMENTAL CONDITIONS	DESIGN DATA	ENVIRONMENTAL CONDITIONS	DESIGN DATA
AIR		LIGHTING AND VISUAL	
Outdoor air temperature (deg. C)	ave. local station temp. reading	General illumination (LUX)	NA
Room Temperature (deg. C)	25	Night illumination (LUX)	NA
Mechanical ventilation:		Task illumination (LUX)	NA
Volume (cu.m./hr.-person)	12.75	Colour rendering	essential:DESIRABLE:unnecessary
Velocity (m./hr.)	750	Standby light	essential:DESIRABLE:unnecessary
Pressure:		Emergency light	essential:DESIRABLE:unnecessary
Exhaust (psi)	NA	Daylight	essential:desirable:UNNECESSARY
Inlet (psi)	NA	View out	essential:desirable:UNNECESSARY
% Dust filtration	93% - 99% @ 1 micron	Privacy	essential:desirable:UNNECESSARY
Humidity (% RH)	50	Black out	essential:desirable:UNNECESSARY
Cooling load (TR)	0.5		
SOUND		SAFETY	
Acceptable sound level (db)	50	Accessible hot surface:	NA
Speech privacy	essential:desirable:UNNECESSARY	Maximum temperature (deg. C)	NA
Quality which cannot be	tonal impact	Domestic hot water:	NA
tolerated		Maximum temperature (deg. C)	NA
		Access limit	medical staff
		Fire risk	LOW : medium : high
		Other risks	NA

Hospital: Secondary, 25-Bed	R O O M   D A T A   S H E E T		Department of Health HEALTH INFRASTRUCTURE SERVICE
Updated Reference: June 1994	Department: SURGICAL/DELIVERY	Room Title: SURGICAL SUPERVISORS AREA	Reference Sheet Number: 25B-CL-RDS2.6B
TECHNICAL DESIGN DATA			
ENVIRONMENTAL CONDITIONS	DESIGN DATA	ENVIRONMENTAL CONDITIONS	DESIGN DATA
AIR		LIGHTING AND VISUAL	
Outdoor air temperature (deg. C)	ave. local station temp. reading	General illumination (LUX)	NA
Room Temperature (deg. C)	25	Night illumination (LUX)	NA
Mechanical ventilation:		Task illumination (LUX)	NA
Volume (cu.m./hr.-person)	12.75	Colour rendering	essential:DESIRABLE:unnecessary
Velocity (m./hr.)	750	Standby light	essential:DESIRABLE:unnecessary
Pressure:		Emergency light	essential:DESIRABLE:unnecessary
Exhaust (psi)	NA	Daylight	essential:desirable:UNNECESSARY
Inlet (psi)	NA	View out	essential:desirable:UNNECESSARY
% Dust filtration	93% - 99% @ 1 micron	Privacy	essential:desirable:UNNECESSARY
Humidity (% RH)	50	Black out	essential:desirable:UNNECESSARY
Cooling load (TR)	0.5		
SOUND		SAFETY	
Acceptable sound level (db)	50	Accessible hot surface:	NA
Speech privacy	essential:desirable:UNNECESSARY	Maximum temperature (deg. C)	NA
Quality which cannot be	tonal impact	Domestic hot water:	NA
tolerated		Maximum temperature (deg. C)	NA
		Access limit:	medical staff
		Fire risk	LOW : medium : high
		Other risks:	NA